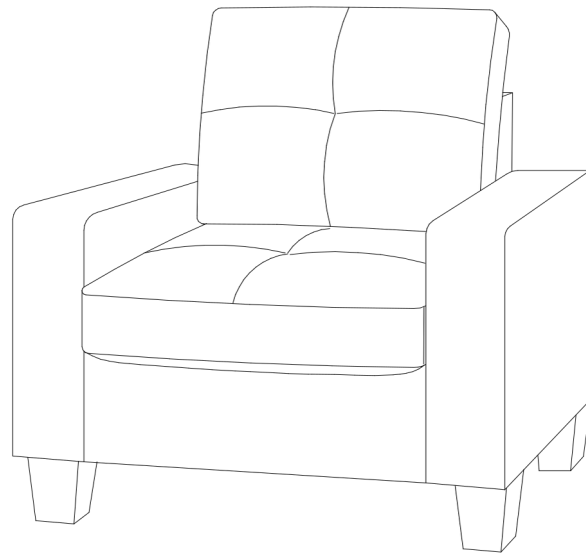
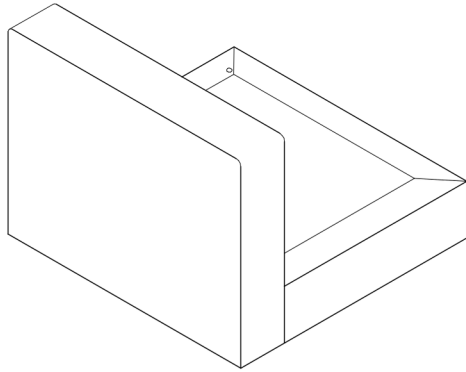


ASSEMBLY INSTRUCTION



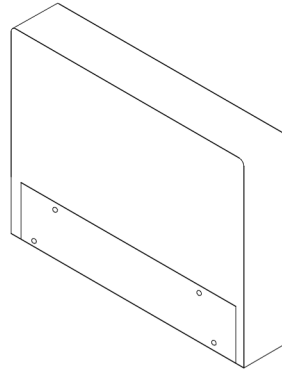
ASSEMBLY PART

1.



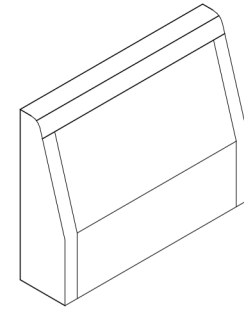
LEFT SIDE (1PC)

2.



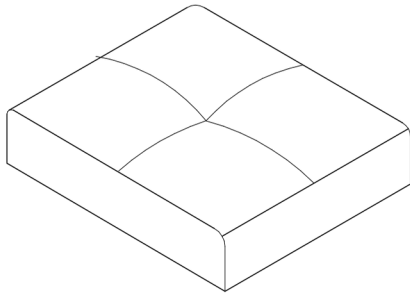
RIGHT SIDE (1PC)

3.



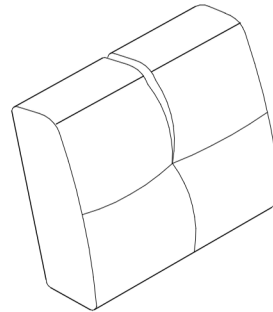
BACK REST (1PC)

4.



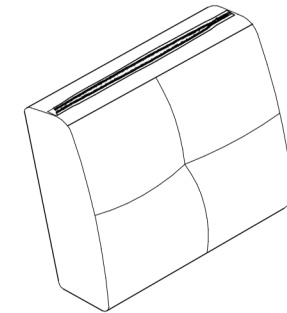
SEAT CUSHION (1PC)

5.



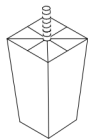
BACK PILLOWS INSIDE FILLING
(1PC)

6.



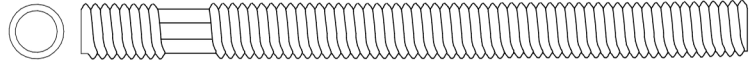
PILLOW CASE COVERS (1PC)

7.



LEG (4PCS)

HARDWARE LIST



A

2PCS

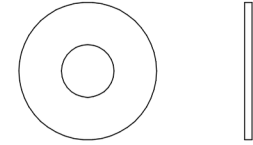
5/16 x 80mm



B

6PCS

Spring Washer 5/16



C

6PCS

Flat Washer 5/16 x 22mm



D

2PCS

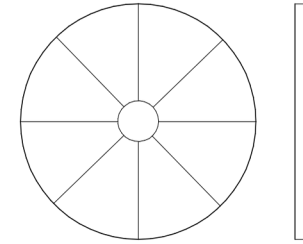
Hex Nut 5/16 x 12mm



E

1PC

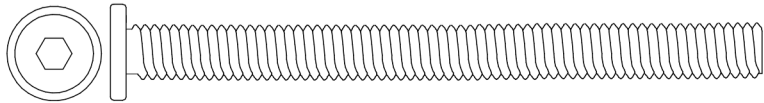
T Spanner



F

4PCS

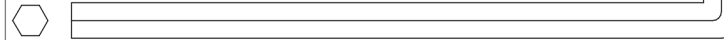
Plastic Washer



G

4PCS

JCBB Bolt 5/16 X 80mm



H

1PC

Allen Key M5

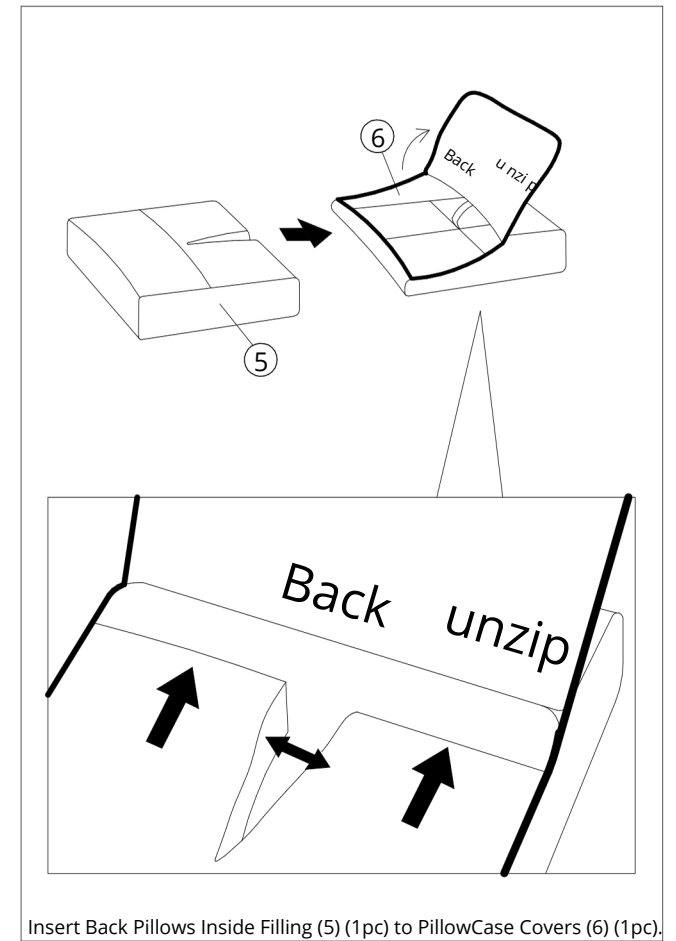
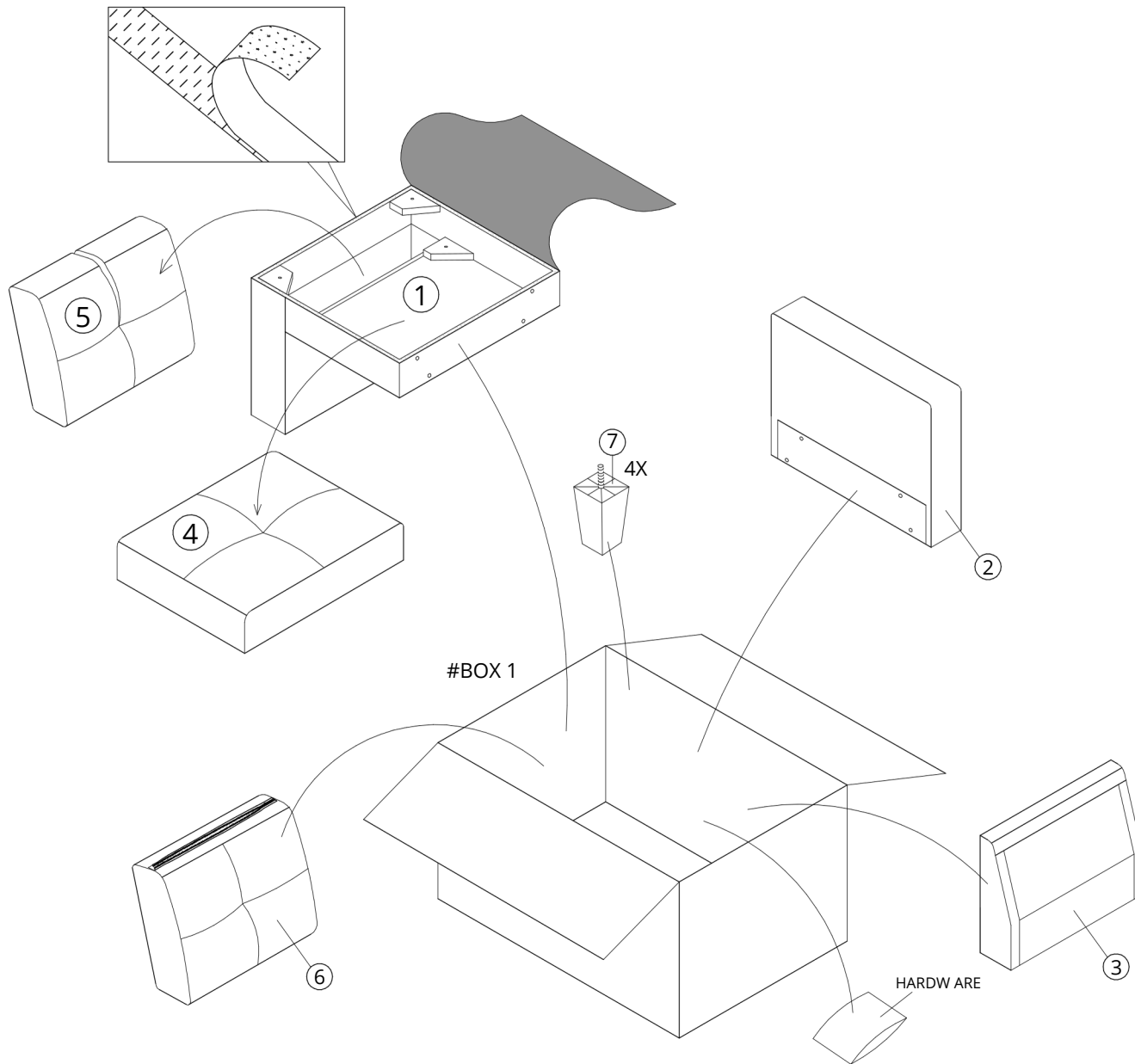
1 : 1



ASSEMBLY INSTRUCTION

STEP 1.

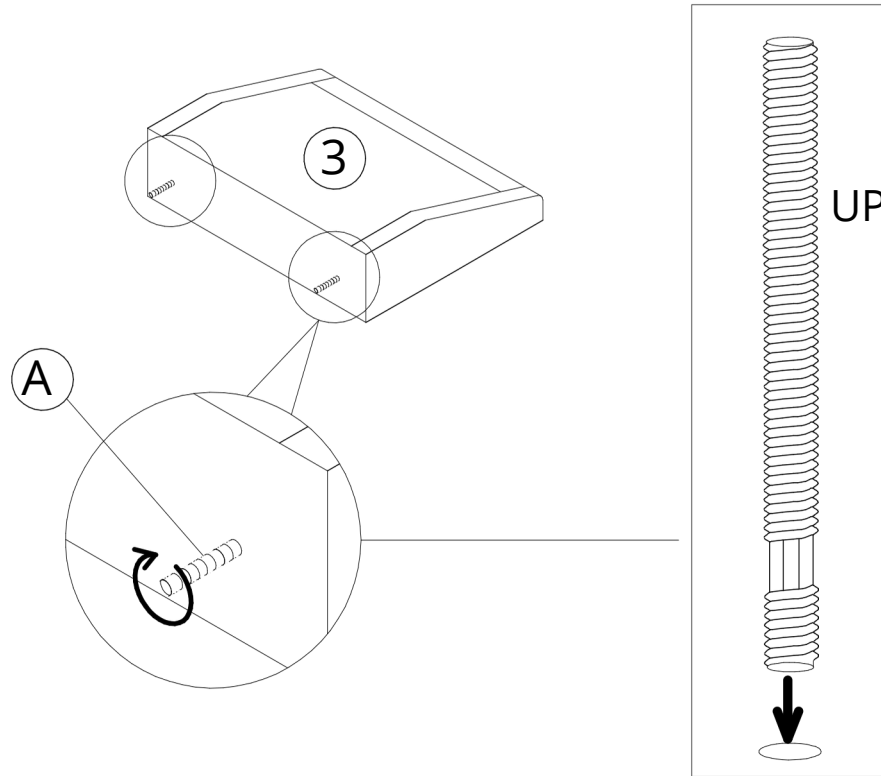
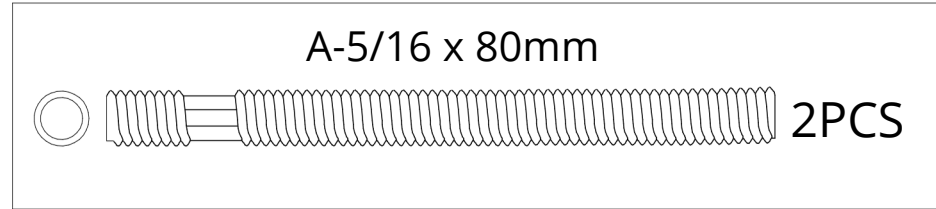
Open the cover cloth located behind the Left Side (1) and Right Side (2). Remove all parts and hardware.



ASSEMBLY INSTRUCTION

STEP 2.

Attach 5/16 x 80mm (A) (2pcs) to Back Rest (3) (1pc).



ASSEMBLY INSTRUCTION

STEP 3.

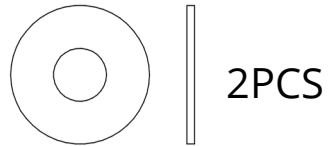
Attach the Back Rest (3) to Left Side (L) (1). Use Spring Washer 5/16 (B) (4pcs), Flat Washer 5/16 x 22mm (C) (4pcs), Hex Nut 5/16 x 12mm (D) (4pcs) and T Spanner (E) to fix.

B-Spring Washer 5/16



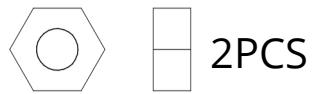
2PCS

C-Flat Washer 5/16 x 22mm



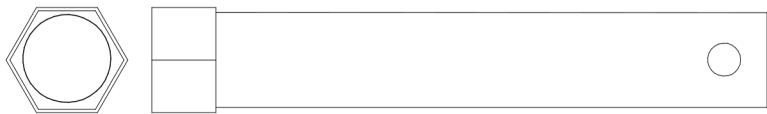
2PCS

D-Hex Nut 5/16 x 12mm

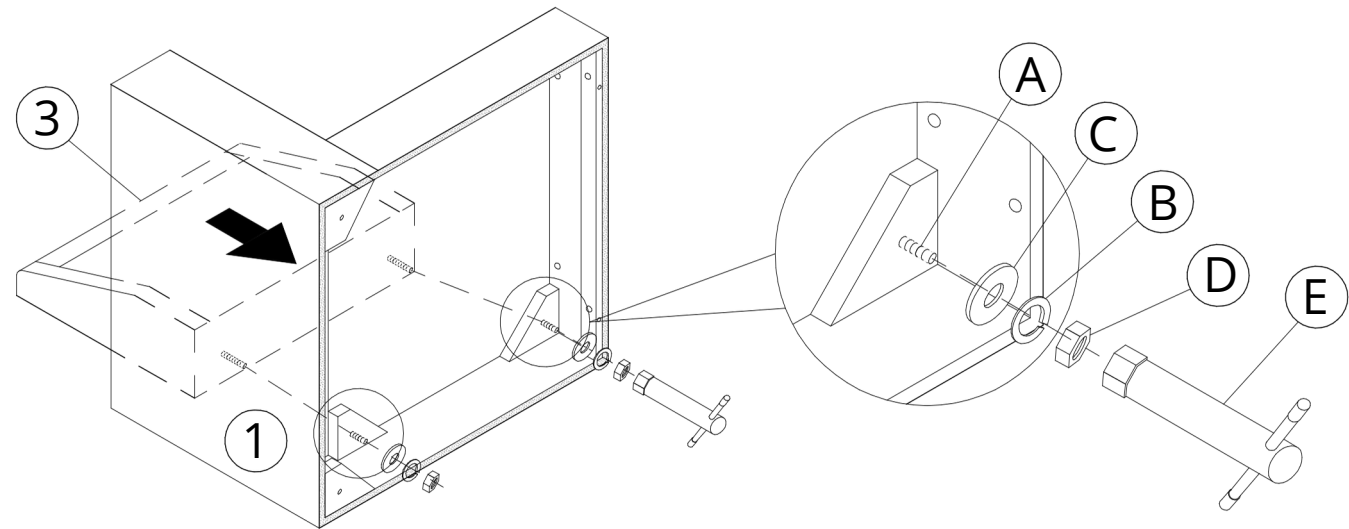


2PCS

E-T Spanner



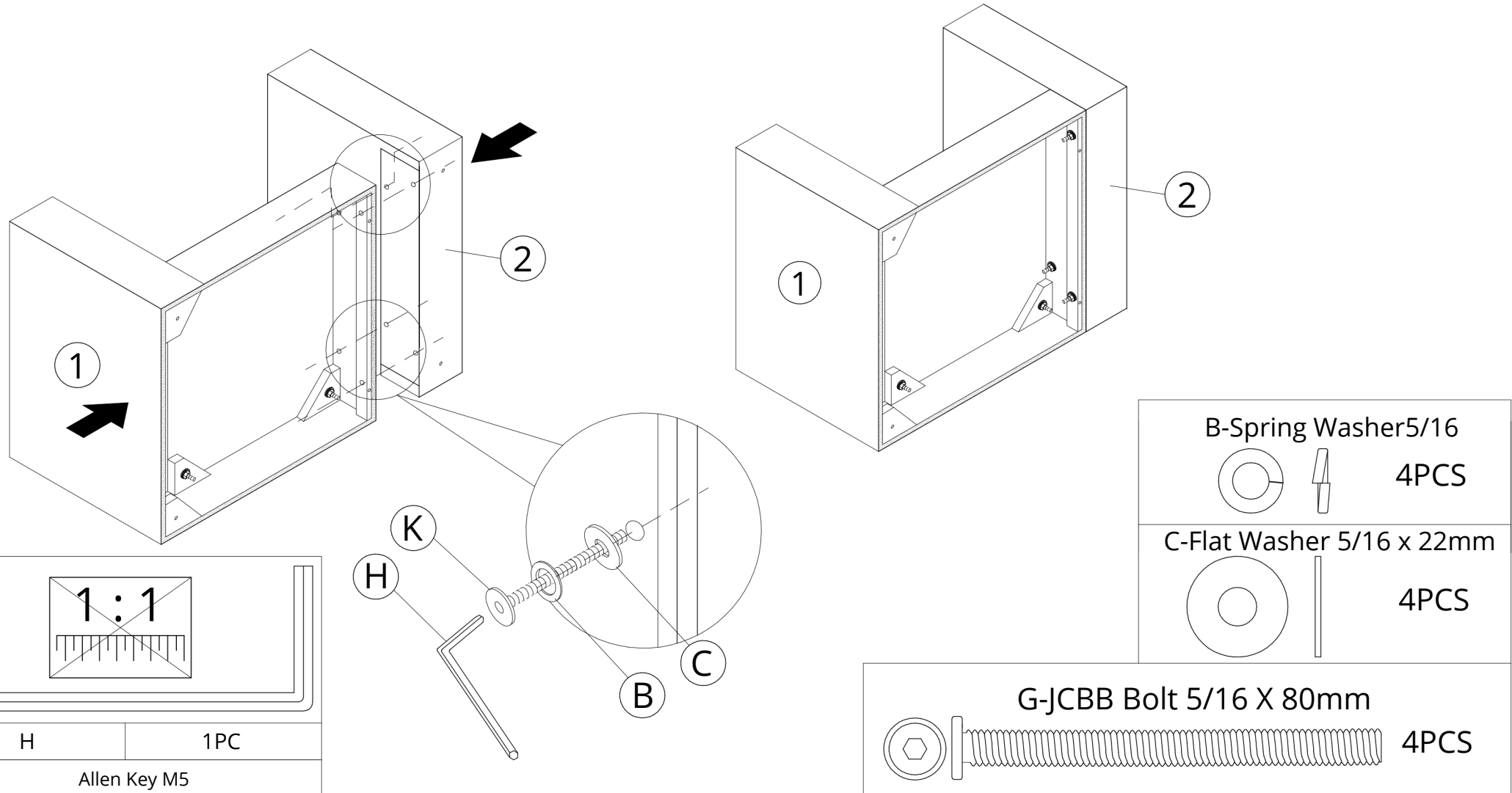
1PC



ASSEMBLY INSTRUCTION

STEP 4.

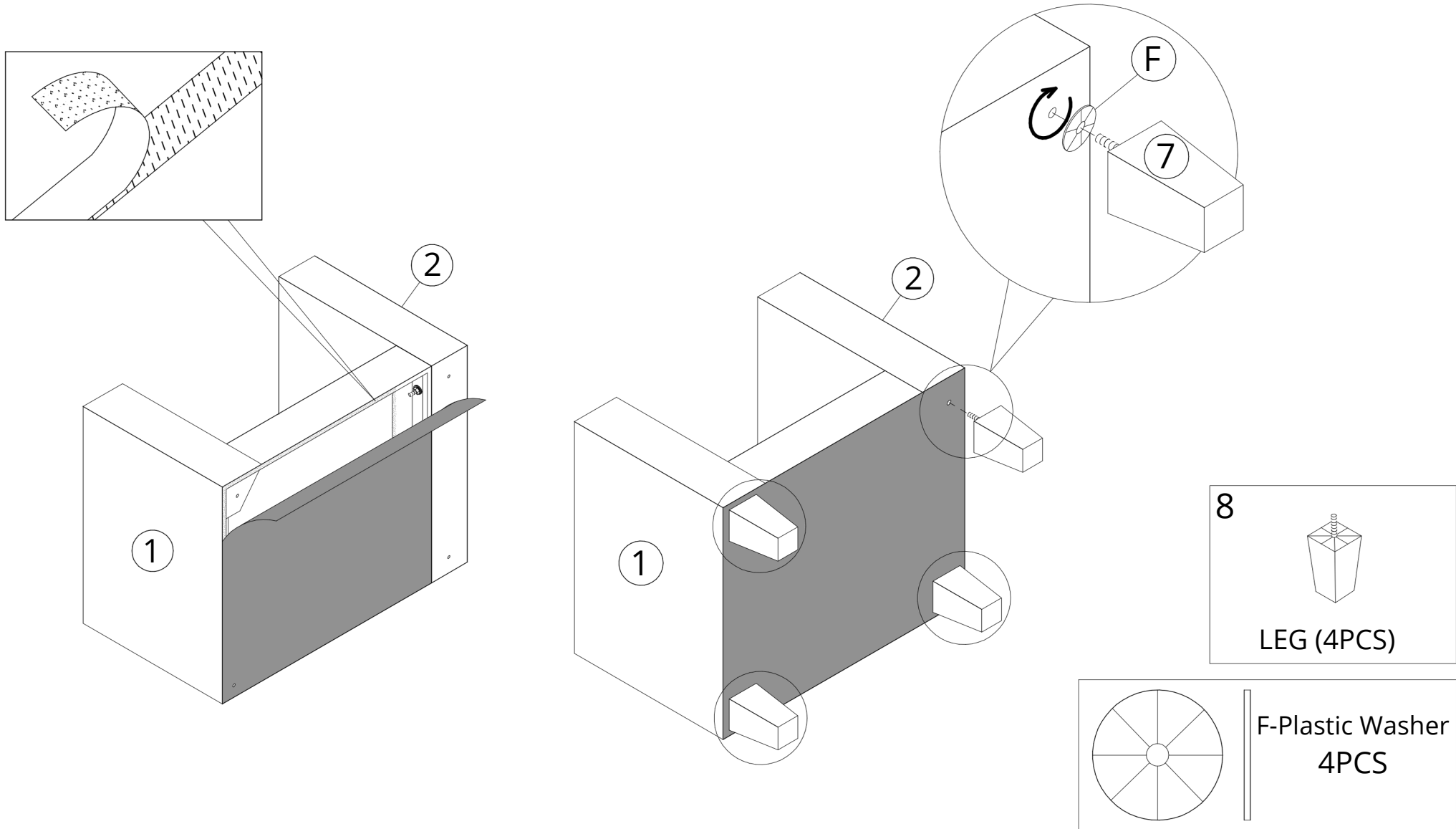
Attach Left Side (1) to Right Side (2). Use JCBB Bolt 5/16 x 80mm (G) (4pcs), Spring Washer 5/16 (B) (4pcs), Flat Washer 5/16 x 22mm (C) (4pcs) and Allen Key M5 (H) to fix.



ASSEMBLY INSTRUCTION

STEP 5.

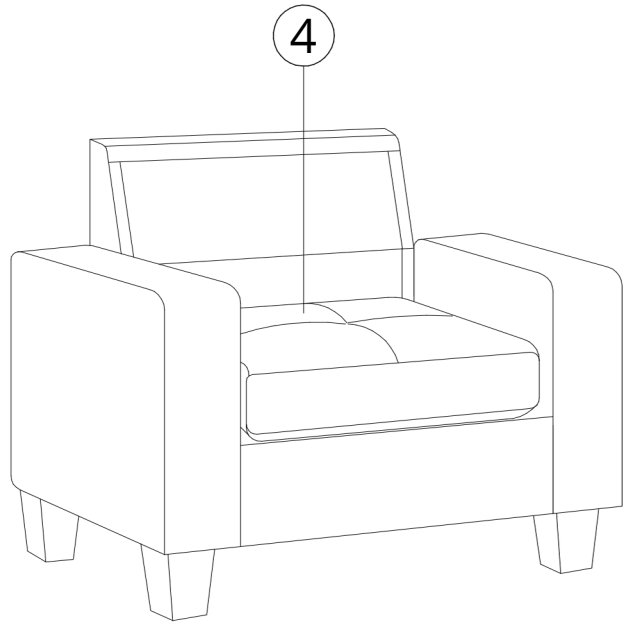
Take a Cover Cloth and closed with velcro. Attach Legs (7) (4pcs) and Plastic Washer (F) (4pcs) to the four corners of the unit.



ASSEMBLY INSTRUCTION

STEP 6.

Attach the Seat Cushion (4) (1pc).



STEP 7.

Lay Back Pillow (5) (1pc).

