

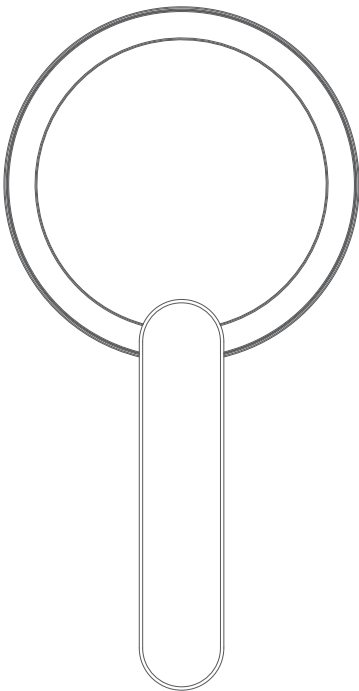
SAFETY INSTRUCTIONS

- ① ALWAYS KEEP AWAY FROM WATER
- ① Do not place or store appliance where it can fall or be pulled into a tub or sink. If the appliance falls into water, DO NOT REACH INTO THE WATER.
- ① Do not use while bathing or in the shower.
- ① Close supervision is necessary when any appliance is used by or near children or people with a physical/mental disability.
- ① Do not operate this appliance if the appliance malfunctions or has been damaged in any manner. No repairs should be attempted by the consumer.
- ① Use appliance only for intended use as described in this instruction book.
- ① Be sure mirror is not in a position where it can reflect sunlight.
- ① Turn switch to OFF position before storage.

INSTRUCTIONS FOR USING BATTERIES

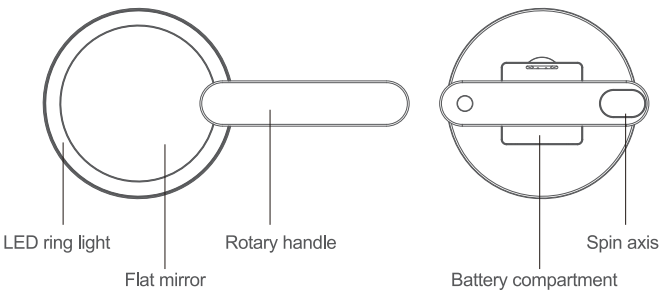
- ① Always use the correct size and grade of battery .
- ② Replace old batteries of a set at the same time.
- ③ Do not mix alkaline, standard, or rechargeable batteries.
- ④ Clean the battery compartment by blowing away any debris prior to battery installation.
- ⑤ Install batteries correctly with regard to polarity (+ and -).
- ⑥ When batteries begin to fail, remove promptly.
- ⑦ Batteries contain various materials that must be recycled and disposed of properly. Do not dispose in the municipal waste system.

LED HAND MIRROR

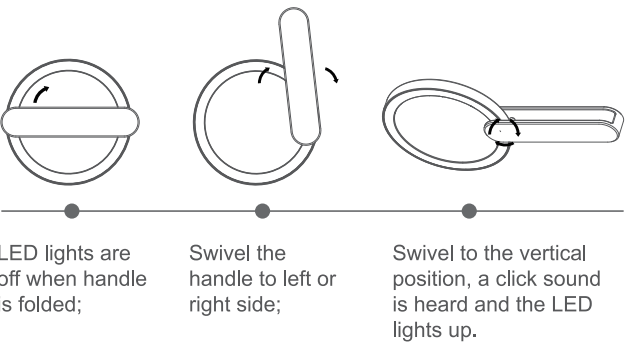


CR2032 button battery operated (included)  
For your safety and continued enjoyment of this product,  
Always read the instructions carefully before using.

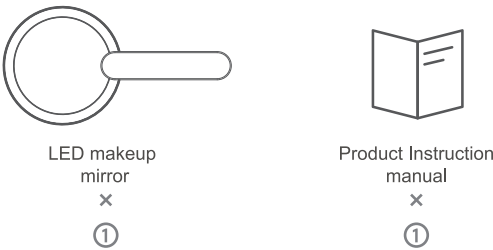
ILLUSTRATE



INSTRUCTIONS

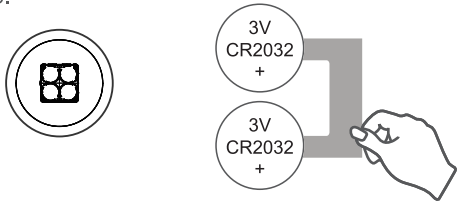


WHAT'S IN THE BOX



HOW TO CHANGE BATTERIES

Open the battery compartment and replace the batteries with CR2032 button batteries.  
Please make sure all batteries are installed with positive terminal facing up.



Cleaning Your Mirror  
To clean your Compact Travel Mirror, gently wipe clean with a soft, damp, terrycloth towel. Do not immerse the product in water.