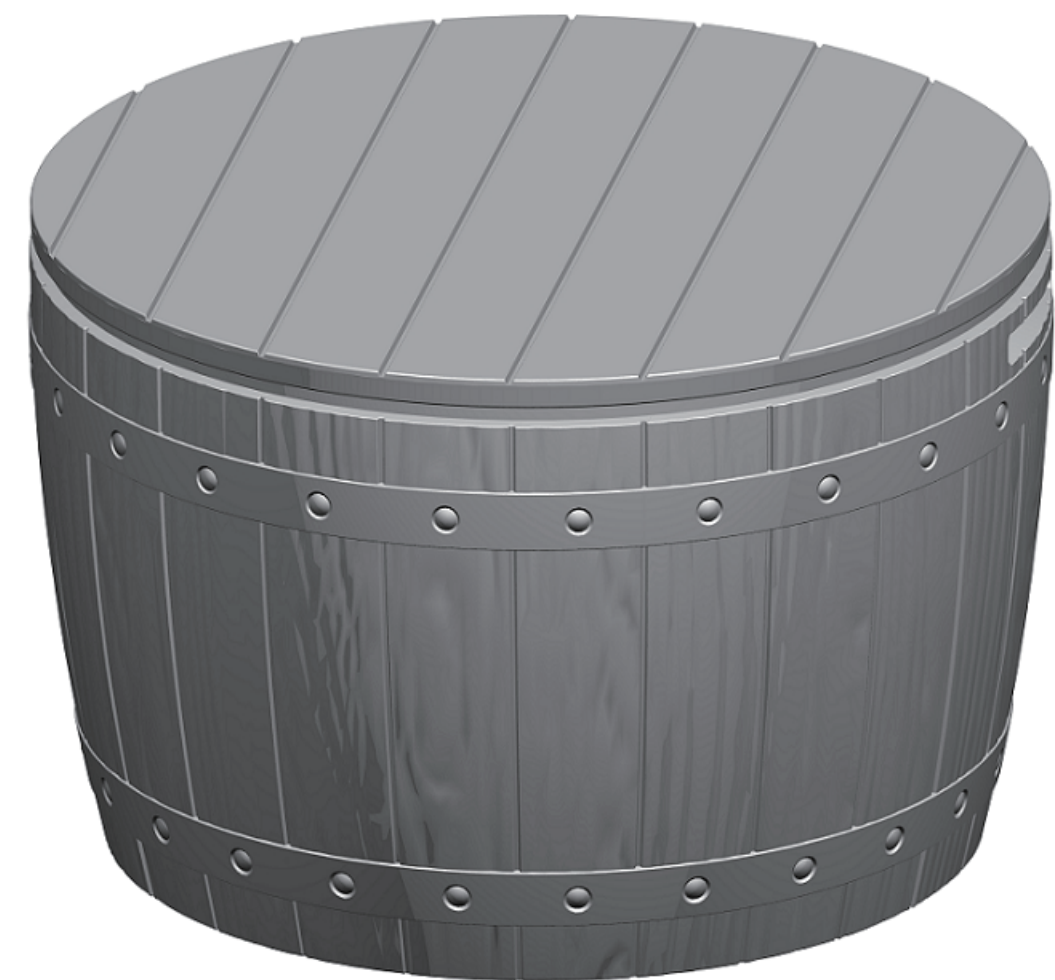


TZSK-V 1

FTPLDB-0031
FTPLDB-0033



DECK BOX

CONTACT US:




If you have any questions about the installation of YITAHOME products, just contact us at +1 (888) 717-8084 from Mon-Fri 8:00 AM-4:30 PM PST / Sat. 8:00 AM-12:00 PM PST or e-mail us at after-sale.cs@hotmail.com




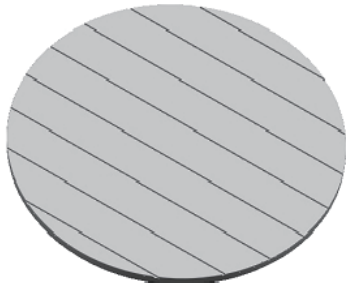
Alternative method to contact us (amazon.com orders only)

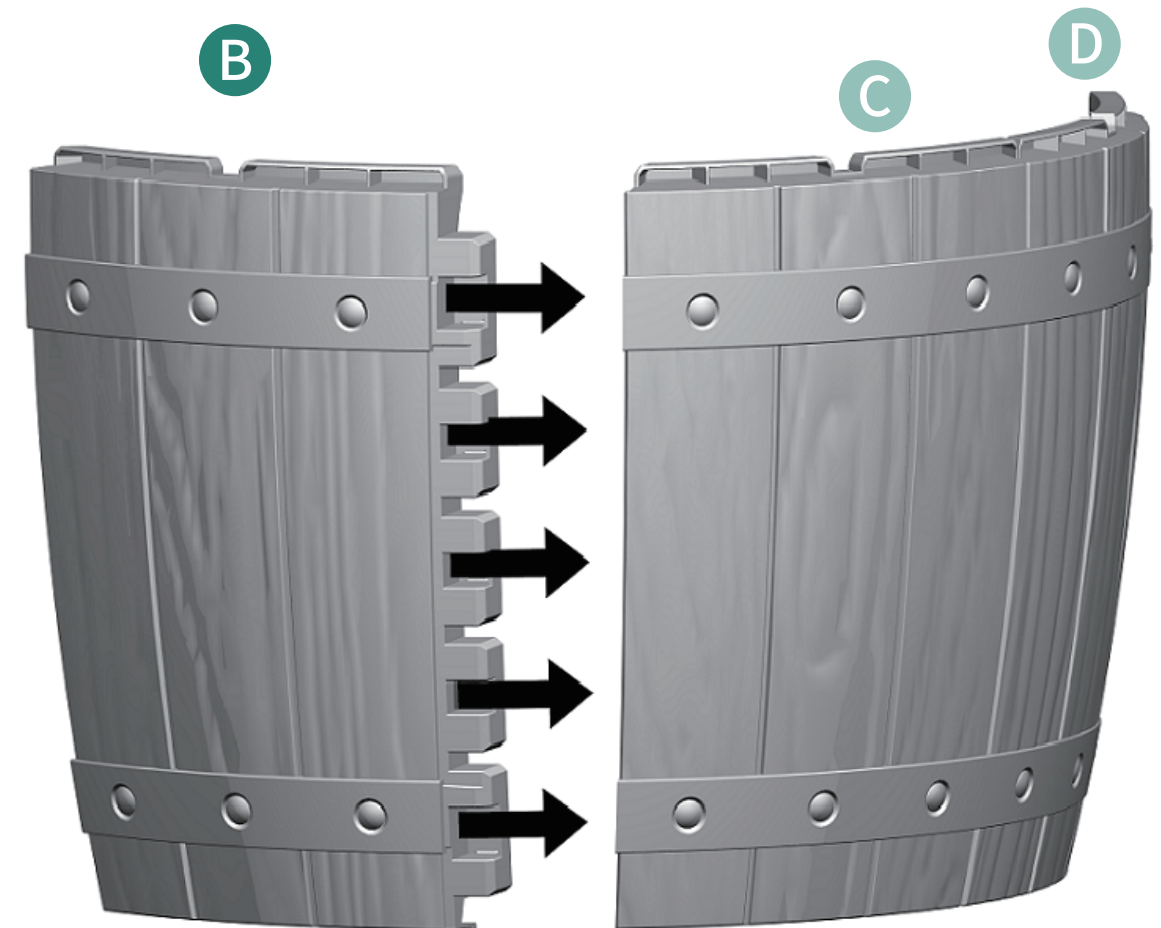
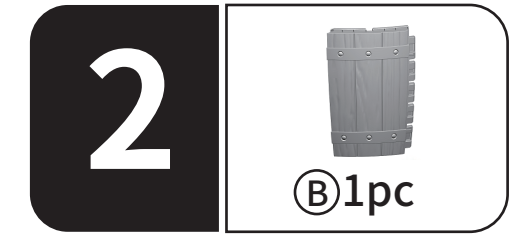
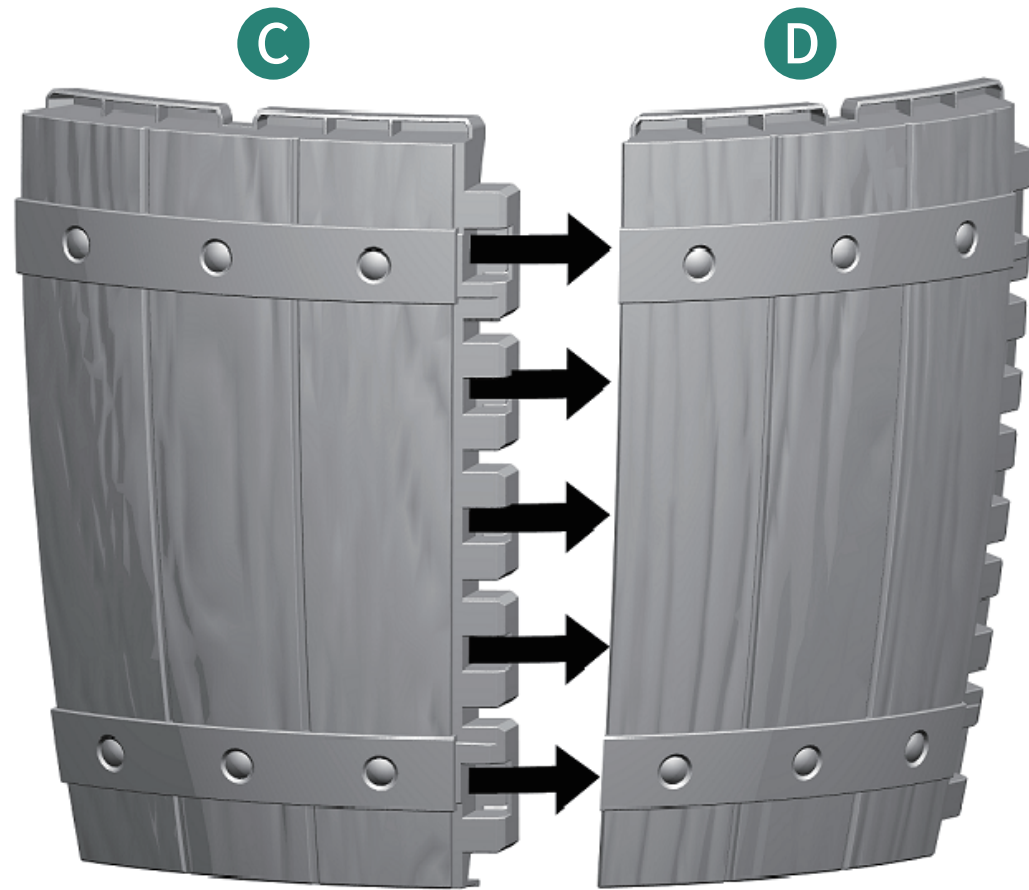
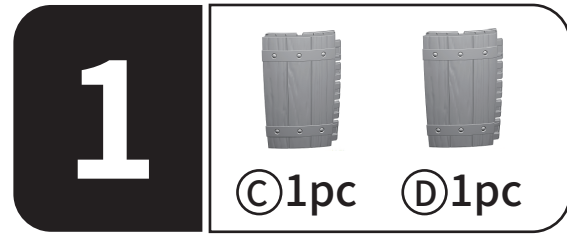
1. Log into your Amazon account
2. Go to "Your Orders" and find the purchase
3. Click on "Contact Seller"

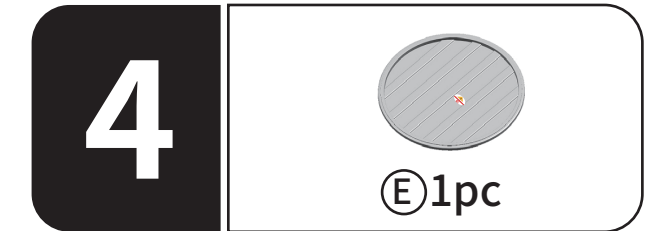
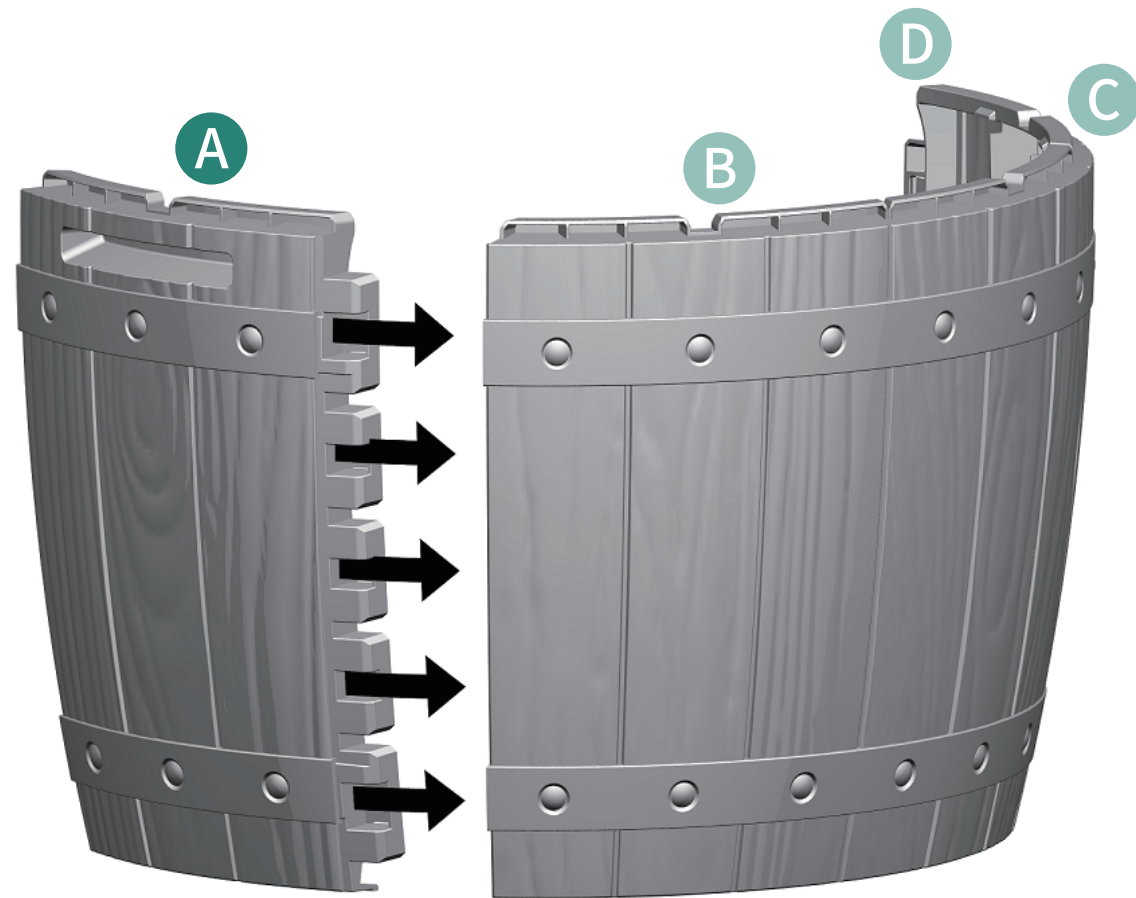
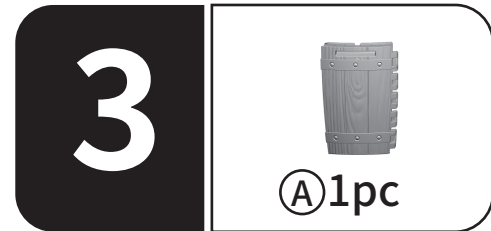
⚠ **Once installed, the product cannot be detached. Strictly follow each step in the installation manual.**


- 1. Gather and organize all required parts prior to assembly.
- 2. Assemble on a flat, clean and soft surface.
- 3. Align the holes before assembly and snap into place with a slight tap.
- 4. Please prepare rubber mallet in advance for convenient installation.
- 5. The product's structure prevents it from being conveniently assembled in low temperatures, so do not intentionally install at low temperatures.
- 6. During installation, please refer to the accessories guides to ensure that they are installed in the correct directions.

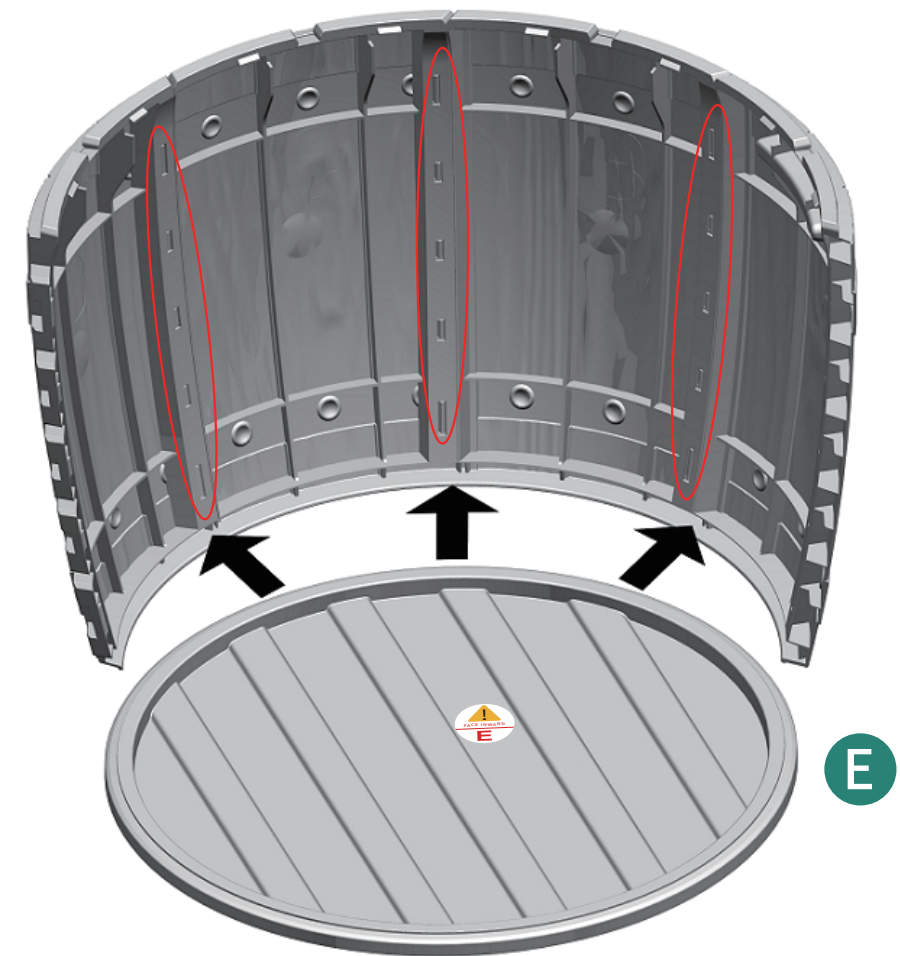
Item no.	Reference Image	Qty.
A		X2
B		X2
C		X2

Item no.	Reference Image	Qty.
D		X2
E		X1
F		X1
G		X1

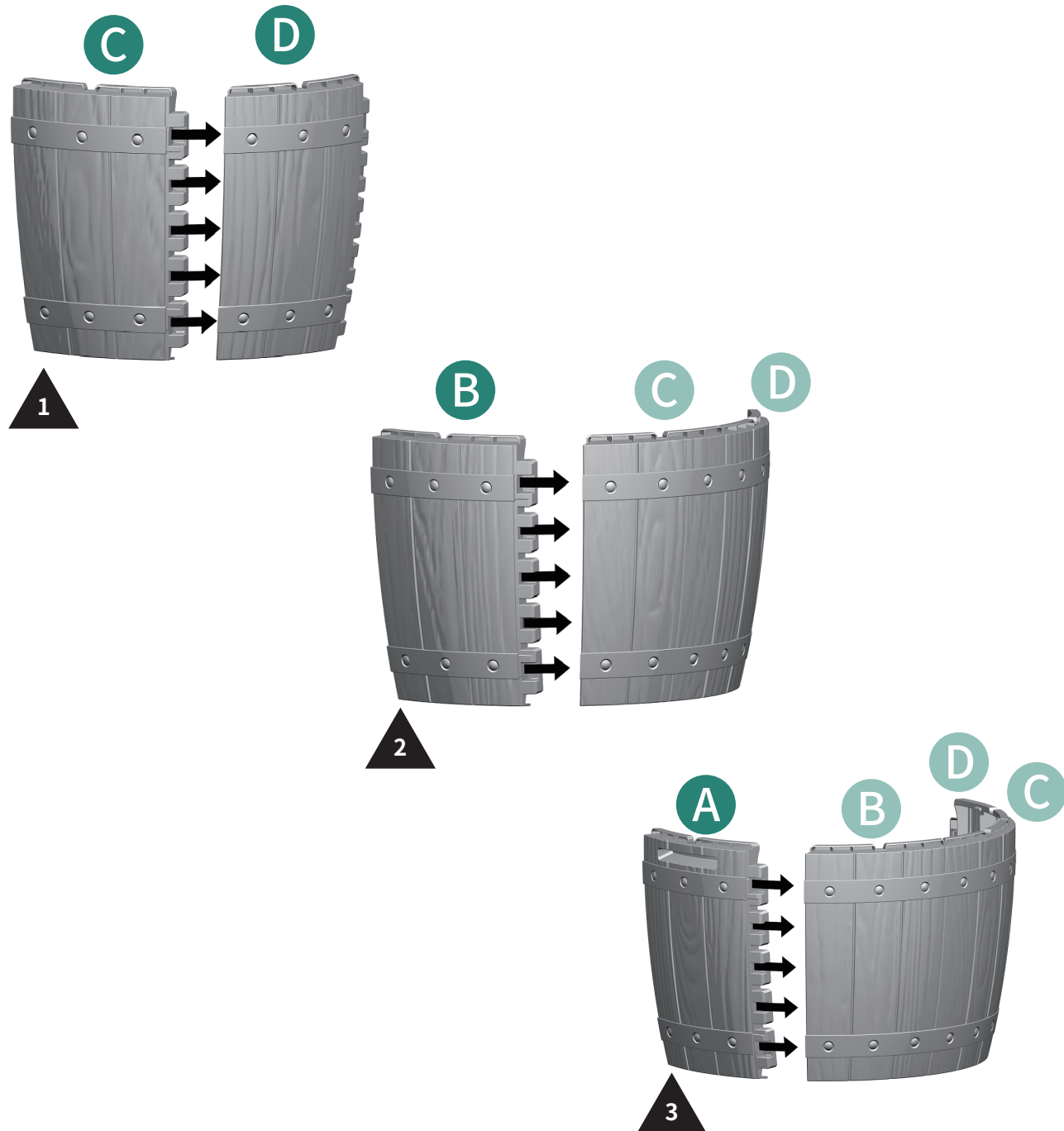




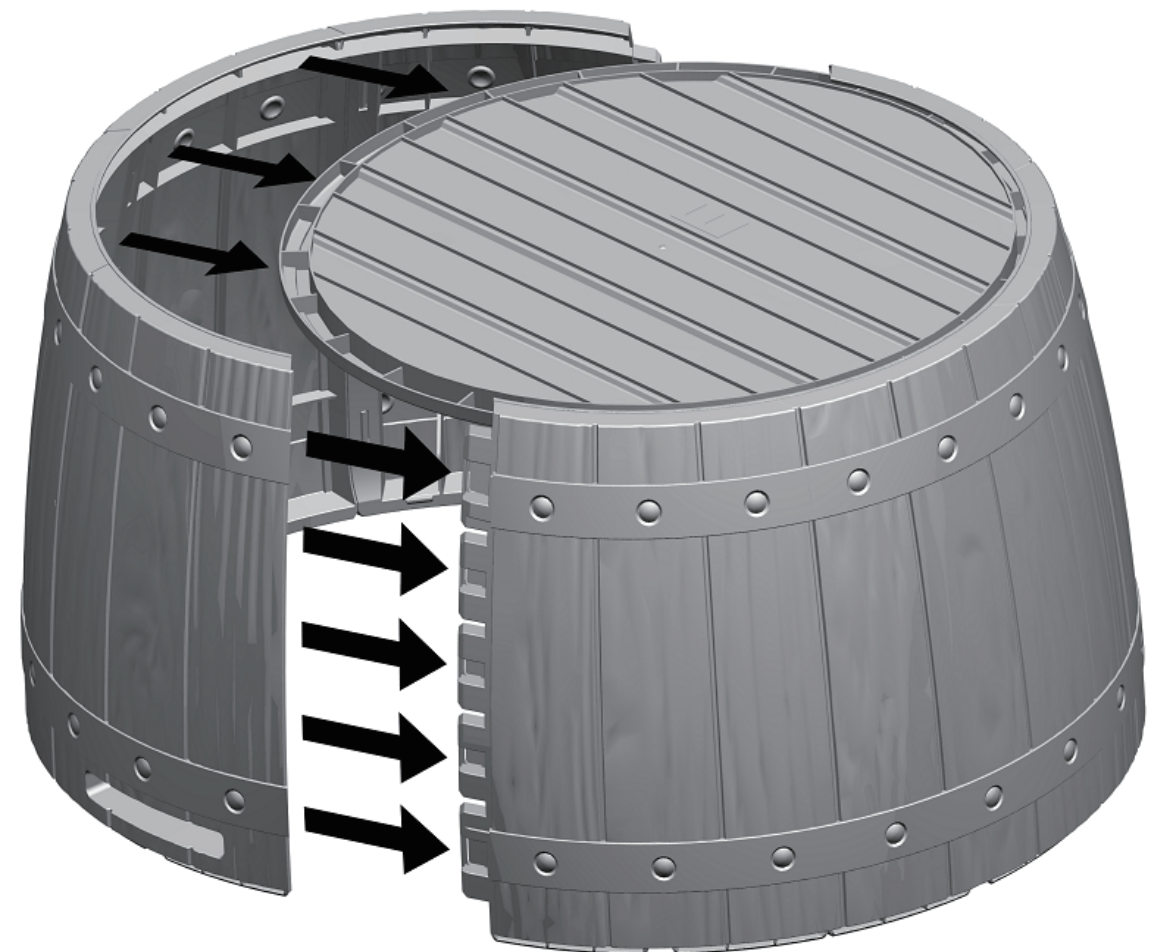
Make sure all parts marked as  are fully assembled as the picture shown.

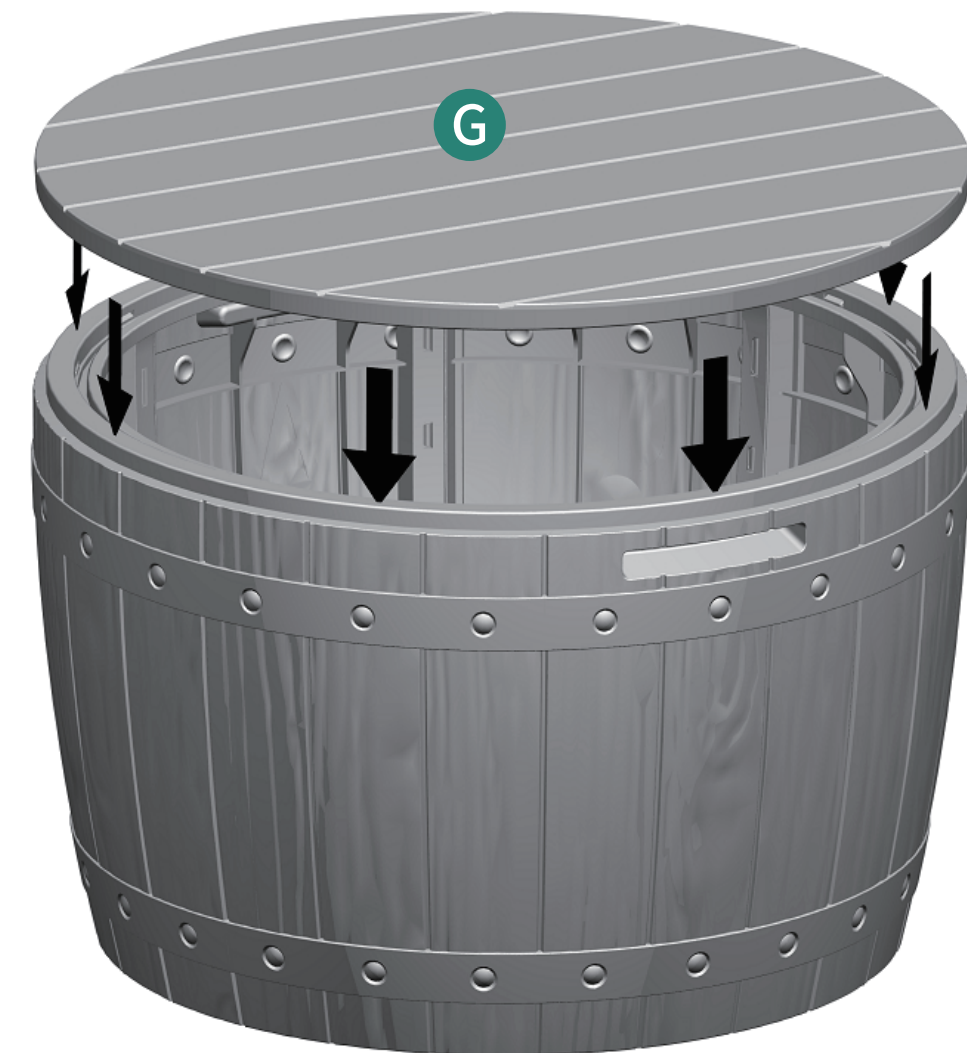
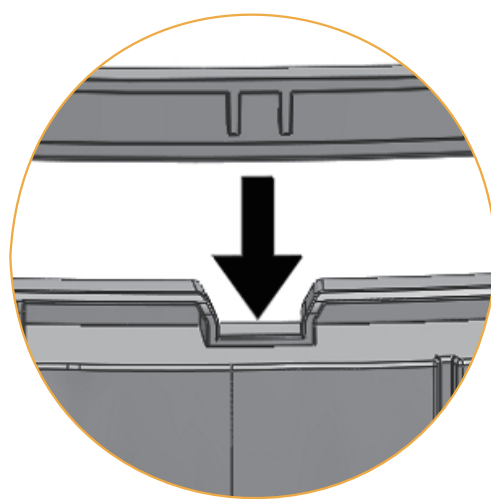
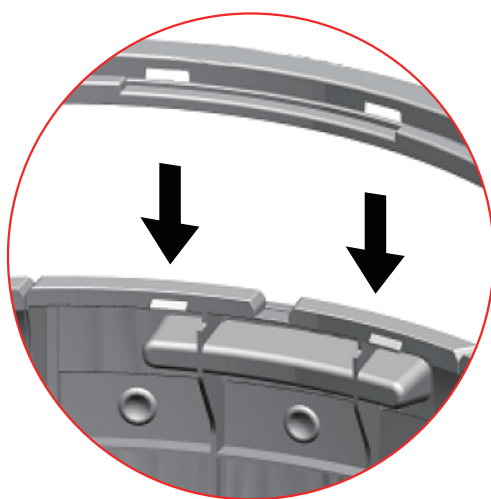
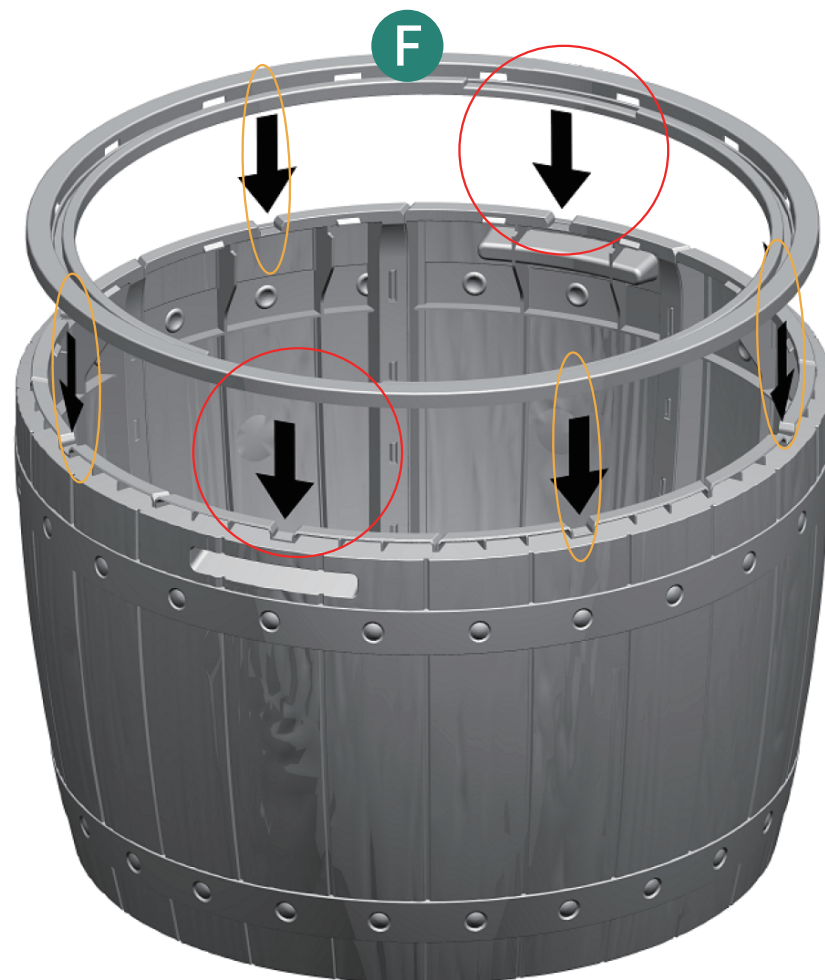


5



6





Installation Completed