

ASSEMBLY INSTRUCTION

DORSET HILL DINING TABLE







IMPORTANT SAFETY CONSTRUCTION

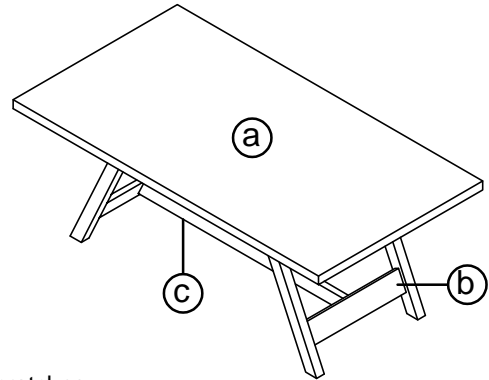
Thanks for purchasing this quality product. Be sure to check all packing material carefully for small parts that may have come loose inside the carton during shipment. Please read all instruction carefully before assembling. For your safety, assembly by two people is recommended.

PARTS INCLUDED

- (1) Table Top (a)
- (2) Table Legs (b)
- (1) Long Stretcher (c)
- (2) Short Stretcher (d)

HARDWARE ENCLOSED

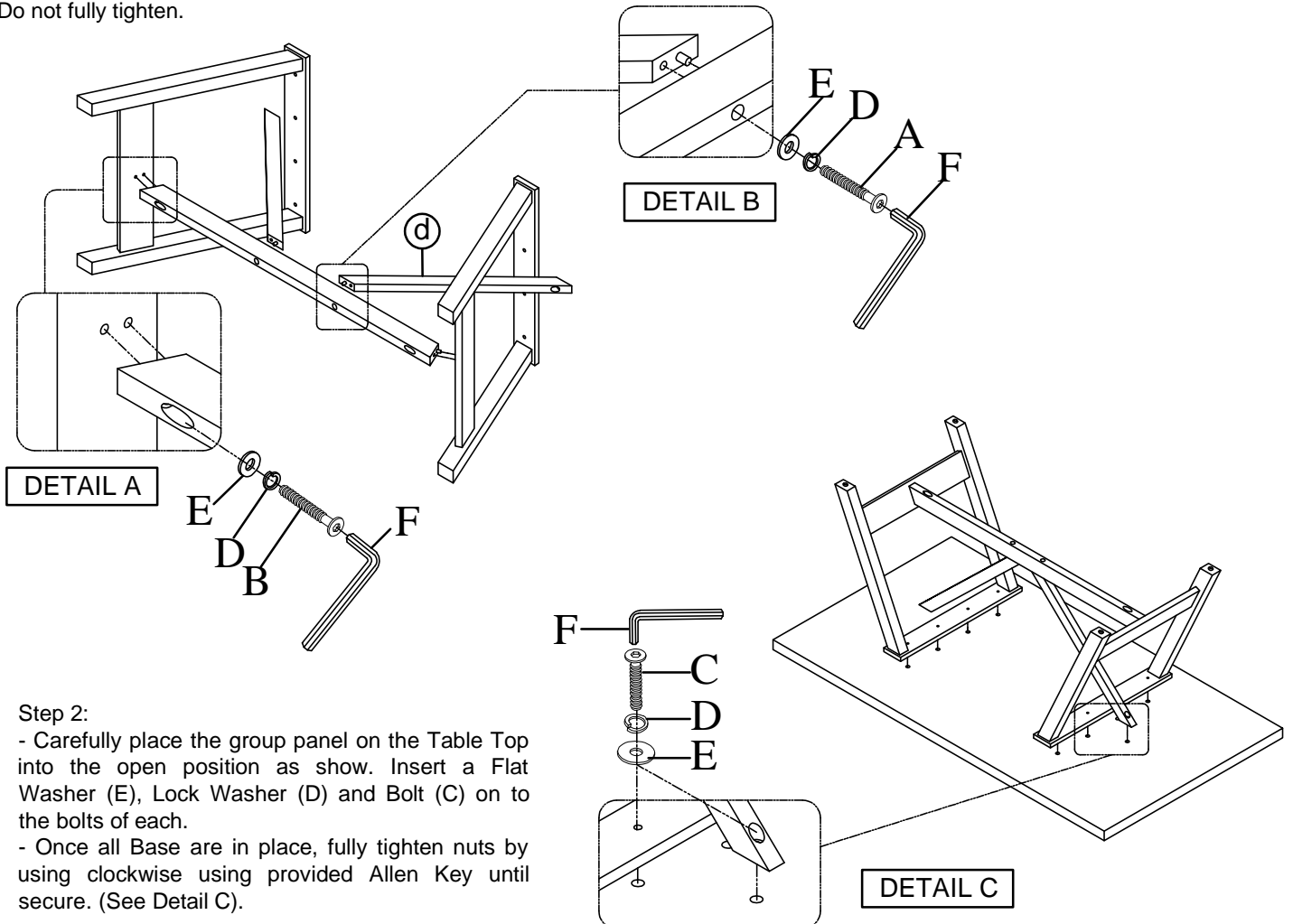
- A 2 x  Ø8 x 75mm
- B 2 x  Ø8 x 50mm
- C 10 x  Ø8 x 40mm
- D 14 x  Ø8 x 13mm
- E 14 x  Ø8 x 19mm
- F 1 x 



ASSEMBLY INSTRUCTIONS

STEP 1:

- Carefully lay Table Leg (b) upside down on a smooth flat surface to prevent scratches.
- Insert Long Stretcher (c) between the legs, Insert a Flat Washer (E), Lock Washer (D) and Bolt (B) into holes at the Leg. (See Detail A).
- Affix the Short Stretcher (d) on the Long Stretcher, Insert a Flat Washer (E), Lock Washer (D) and Bolt (A) into holes at the Long Stretcher. (See Detail B).
- Do not fully tighten.



Step 2:

- Carefully place the group panel on the Table Top into the open position as show. Insert a Flat Washer (E), Lock Washer (D) and Bolt (C) on to the bolts of each.
- Once all Base are in place, fully tighten nuts by using clockwise using provided Allen Key until secure. (See Detail C).

NOTES:

The use of power tools for assembly is not recommended. Power tools can damage hardware or split wood.