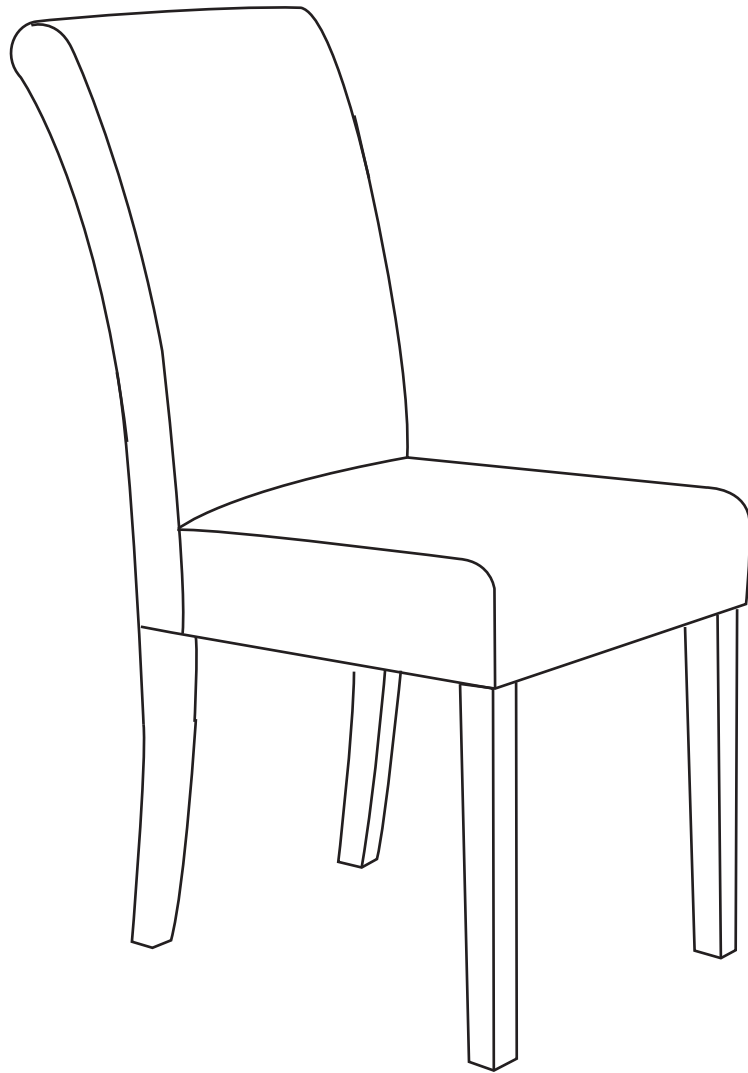


INSTRUCTION MANUAL



Linen Fabric Upholstered Dining Chair

! CARE & MAINTENANCE

- △ Clean the dust with a soft cloth
- △ Do not store in extremely wet environment.

HARDWARE

1

Flat washer



Φ8
9PCS

2

Lock washer



Φ8
9PCS

3

Allen Key



M8
1PC

4

Shorter
Screw



M8x55MM
1PC

5

Medium
Screws



M8x60MM
4PCS

6

longer
Screws

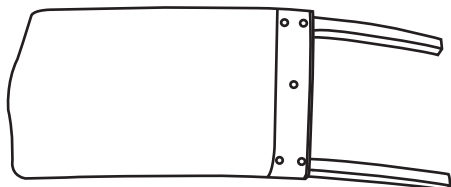


M8x75MM
4PCS

PARTS

A

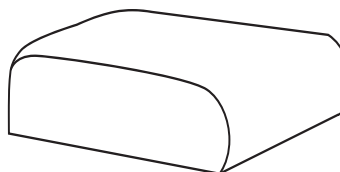
Back



1PC

B

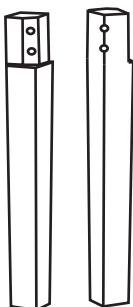
Seat



1PC

C

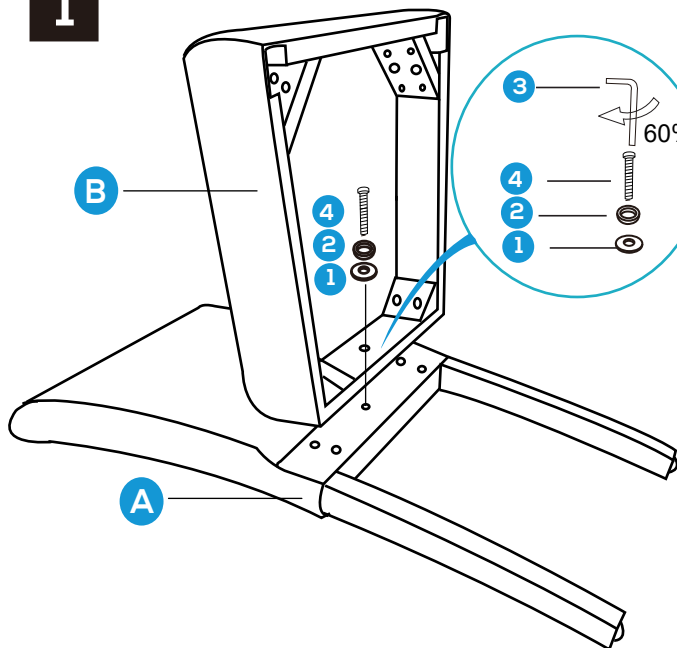
Front Legs



2PCS

PRODUCT ASSEMBLY

1



Put chair back on a clean flat surface.

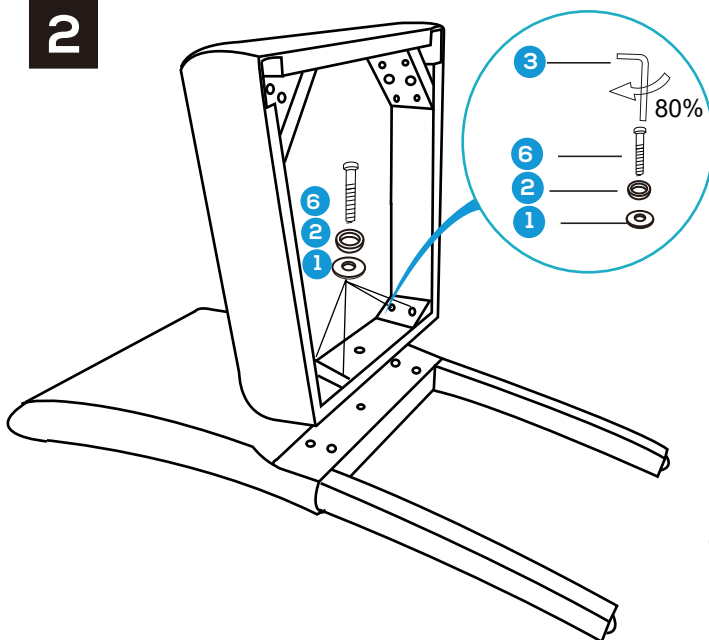
Place seat pad against chair back as shown in diagram.

Secure center holes of the seat pad to chair back by using **SHORTER SCREW (4)** with Washer (**#2, 1**).

DO NOT FULLY TIGHTEN.

First **HAND** tighten then tightened using key up-to **60-80%** only at this stage.

2



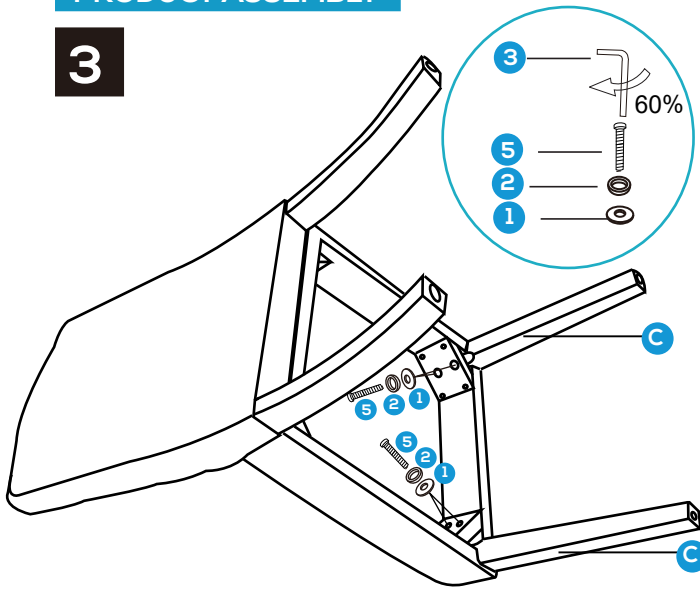
Secure both corner holes of the seat pad to the chair back by using **LONGER SCREWS (6)** with washers (**#2, 1**).

DO NOT FULLY TIGHTEN.
First **HAND** tighten All **4** screws **TOGETHER** at the same time.

Tightened up-to **60-80%** using key only at this stage.

PRODUCT ASSEMBLY

3



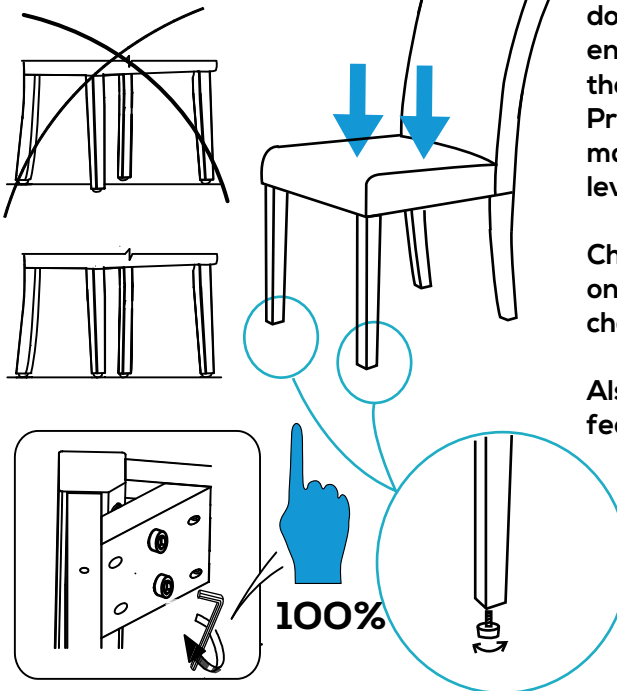
Align front legs in the seat pad as shown in the diagram.

Secure both corner holes of the seat pad to the chair back by using screws **MEDIUM SCREWS (5)** with washers (**#2,1**).

DO NOT FULLY TIGHTEN.
First **HAND** tighten All 4 screws **TOGETHER** at the same time.

Tightened up-to 60-80% using key only at this stage.

4

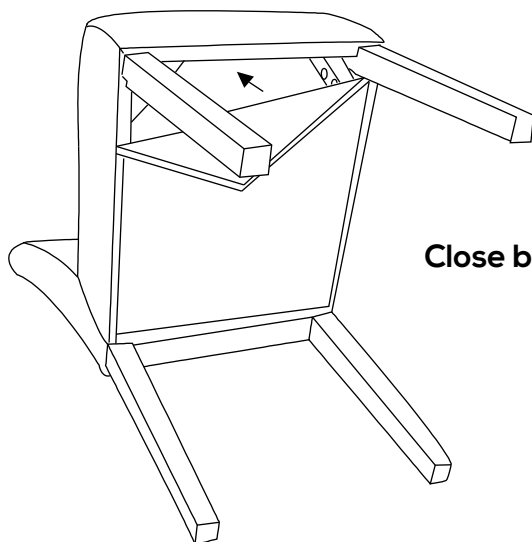


Put chair in the upright position and **SIT ON THE CHAIR** to press downwards on the seat pad ensuring that all 4 feet touch the ground and chair is leveled. Proceed to tighten all screws making sure the chair remains level when tightening.

Check that all screws are tight on a regular basis to ensure chair remains level and secure.

Also you can using adjustable feet to keep four legs level .

5



Close black fabric cover

6

