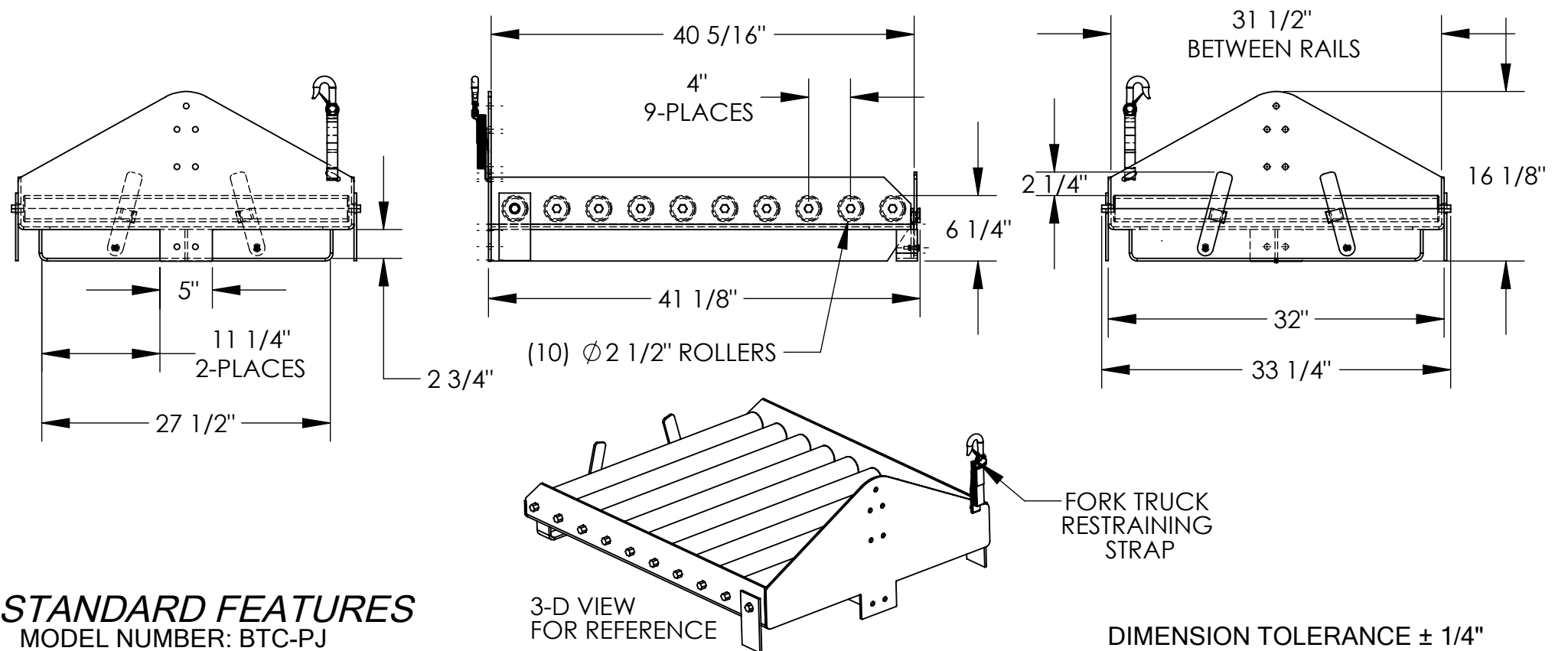


APPROX WEIGHT: 275.52 lbs.  
DOES NOT INCLUDE WEIGHT OF POWER OR PACKAGING!!!

# BATTERY TRANSFER PLATFORM - BTC-PJ

\*\*\* ANY ADDITIONS, DELETIONS, OR OMISSIONS MUST BE CORRECTED ON THIS DRAWING AS THIS DRAWING WILL BE CONSIDERED ALL INCLUSIVE \*\*\*  
ALL GRAPHICS PROVIDED ARE FOR REFERENCE ONLY. IF CERTAIN DIMENSIONS ARE CRITICAL PLEASE VERIFY THOSE DIMENSIONS WITH YOUR SALESPERSON



## STANDARD FEATURES

- MODEL NUMBER: BTC-PJ
- CAPACITY: 4,000 LBS
- USABLE WIDTH: 31 1/2"
- USABLE LENGTH: 40 5/16"
- OVERALL WIDTH: 33 1/4"
- OVERALL LENGTH: 41 1/8"
- OVERALL HEIGHT: 16 1/8"
- FLOOR TO TOP OF ROLLERS (EXCLUDING PALLET TRUCK): 6 1/4" (+/- 1/8")
- NUMBER OF ROLLERS: 10
- FORK OPENING WIDTH 11 1/4"
- FORK OPENING HEIGHT 2 3/4"
- DESIGNED TO ACCOMODATE MOST PALLET TRUCK
- TOUGH BAKED IN POWDER COAT YELLOW FINSH

## SPECIAL FEATURES

NONE

### DIMENSION TOLERANCE ± 1/4"

<b>APPROVAL</b>	I, THE UNDERSIGNED, AGREE THAT THE PRODUCT AS REPRESENTED SATISFIES DESIGN AND DIMENSION REQUIREMENTS. I ALSO ACKNOWLEDGE MY DUTY TO CONFIRM PRODUCT AND INSTALLATION COMPLIANCE WITH ALL APPLICABLE FEDERAL, STATE AND LOCAL REGULATIONS AND STANDARDS.	
	<b>ANY MODIFIED UNITS ARE NON-RETURNABLE</b>	
	[ ] As drawn [ ] As marked	
	Signed: _____ Date: _____	
Printed Name: _____		
LEAD TIME WILL START UPON RECEIPT OF SIGNED APPROVAL DRAWING		

FOR INTERNAL USE ONLY PROJECT SIGN OFF	
SALES	
ENG.	
FAB.	
POWER	

DISTRIBUTOR'S NAME:		P.O.#
VESTIL MANUFACTURING		X
W.O.#		X
DRAWN BY:	B.HORN	DATE: 08/12/2014
REFERENCE:	X	SCALE: 1:14
QUOTED LEAD TIME:	X	QUOTE #
		X
FILE NAME:		33-007-158