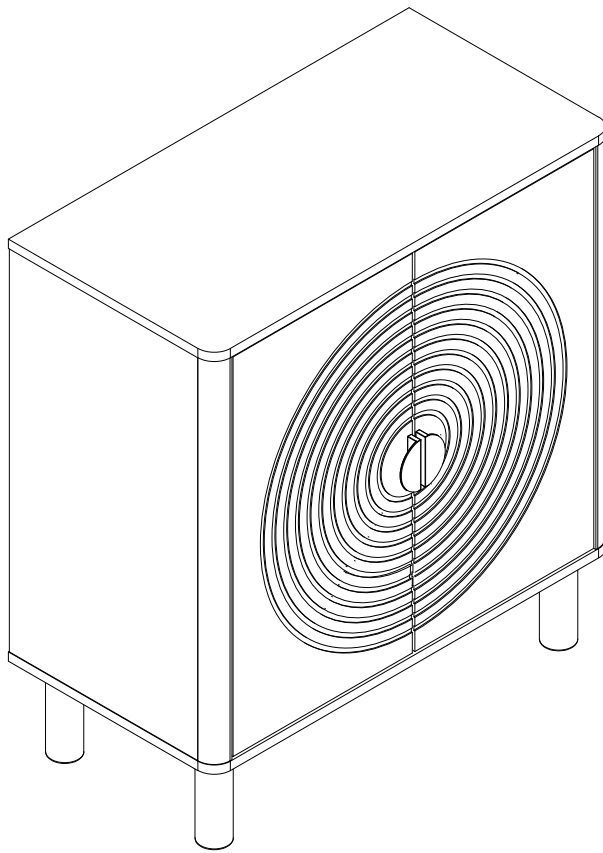


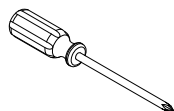
Installation Instruction



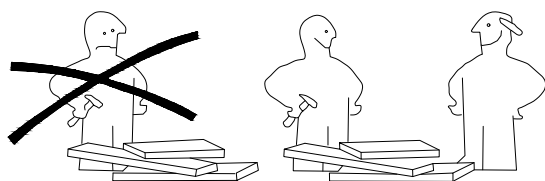
Assembling

What you need

- Use the packaging carton as a working surface to prevent product damage during assembly
- Phillips head screwdriver



Weight Limitation

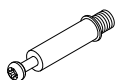


What' included

Code	Description	Qty
A	Cam Bolt M6X35MM	8
B	Cam Lock 15X9MM	8
C	Wooden Dowel M8X30MM	8
D	Screw M4X40MM	6
E	Screw M6X32MM	6
F	Screw M3.5X14MM	18
G	Screw M3X14MM	36
H	Shelf Holder	4
I	Screw M4X18MM	4
J	The back button	4
K	Shelf Holder	12
L	Metal shake handhandle	2
M	Stopper	1
N	Screw wrench	1
O	Door panel hinge	4
P	Metal iron sheet	4
Q	Metal connector	2
R	Expansion tube	2
S	Plank sticker	14

The Hardwares

A



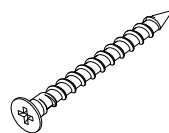
B



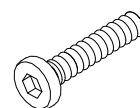
C



D



E



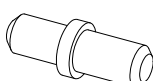
F



G



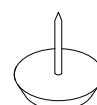
H



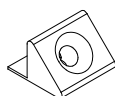
I



J



K



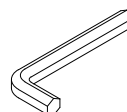
L



M



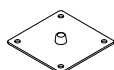
N



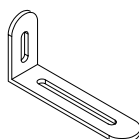
O



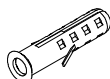
P



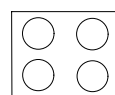
Q



R



S



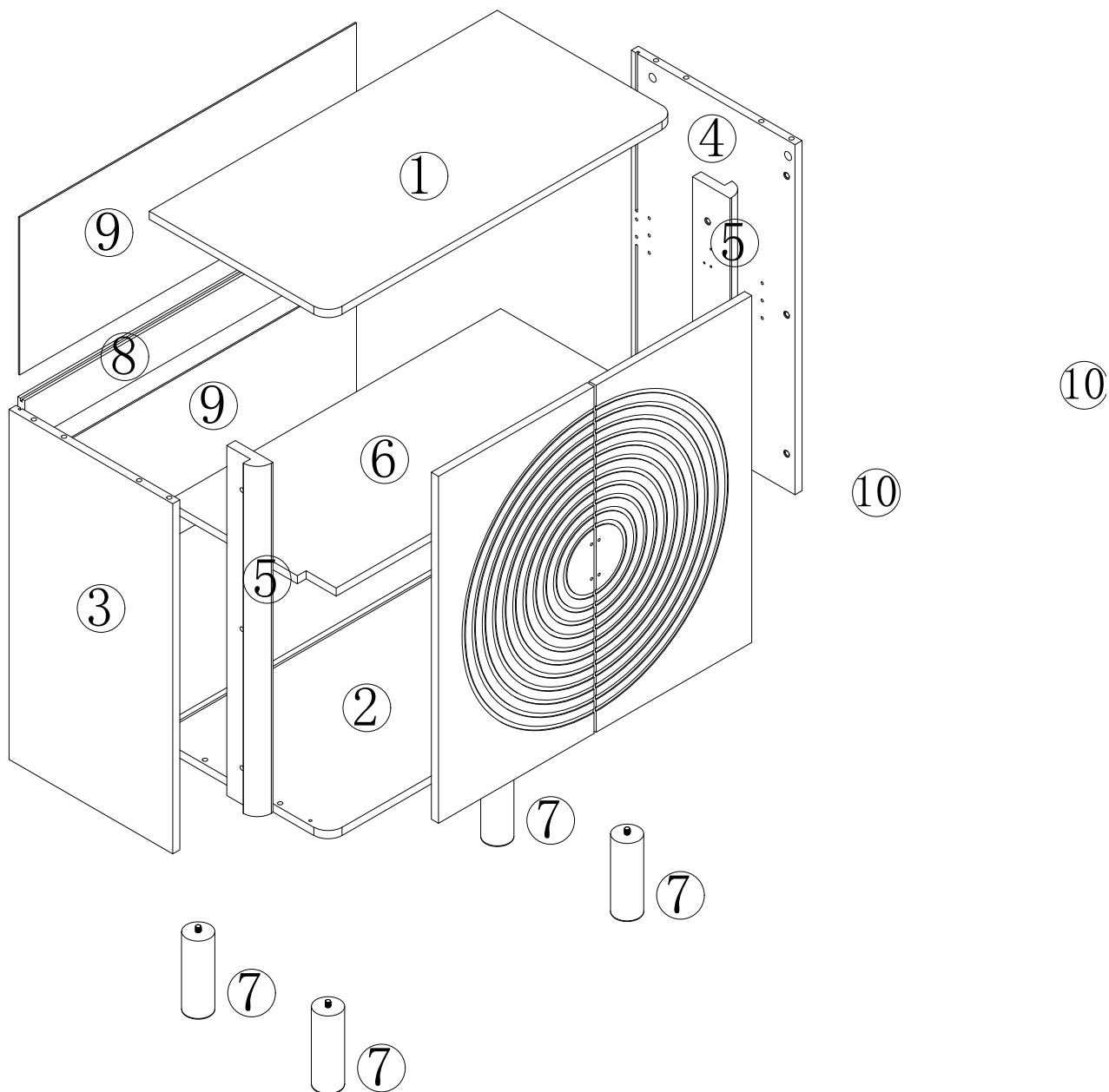
IMPORTANT:

1. Do not tighten bolts / screws completely until all bolts / screws are lined up and inserted into holes.
2. Do not over tighten screws and bolts to avoid stripping
3. Please use hand tools to assemble this product, you can also use power tools (please use power tools carefully).

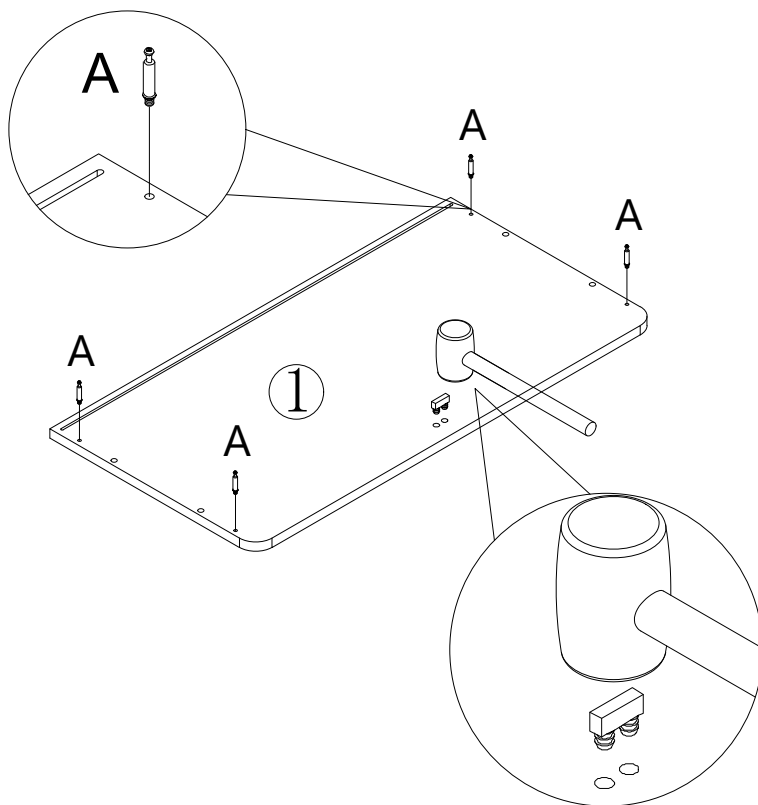
Included Accessories

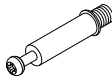
Code	Description	Qty
1	Cabinet panel	1
2	Bottom Panel	1
3	Left Side Panel	1
4	Right Side Panel	1
5	Left and Right decorative panels	2
6	Movable pressure plate	1
7	Wooden supporting foot	4
8	Back pull plate	1
9	Backboard	2
10	Door plank	2

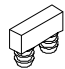
The Accessoriess



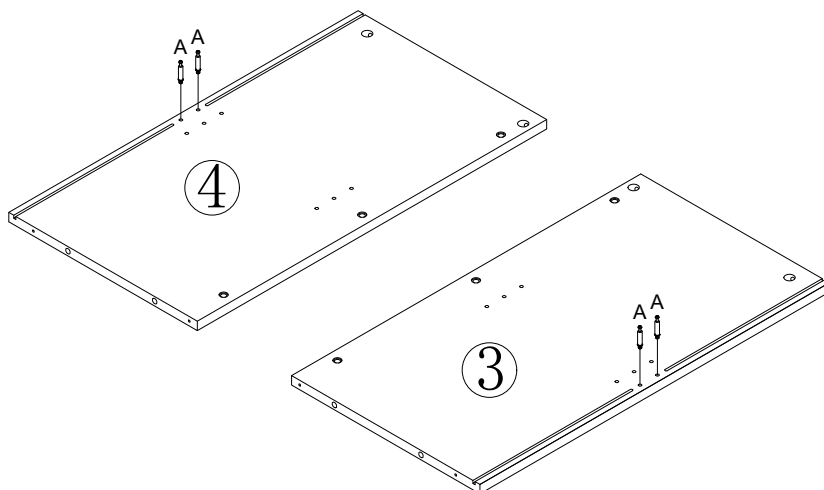
Step 1

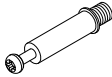


A	×4
	

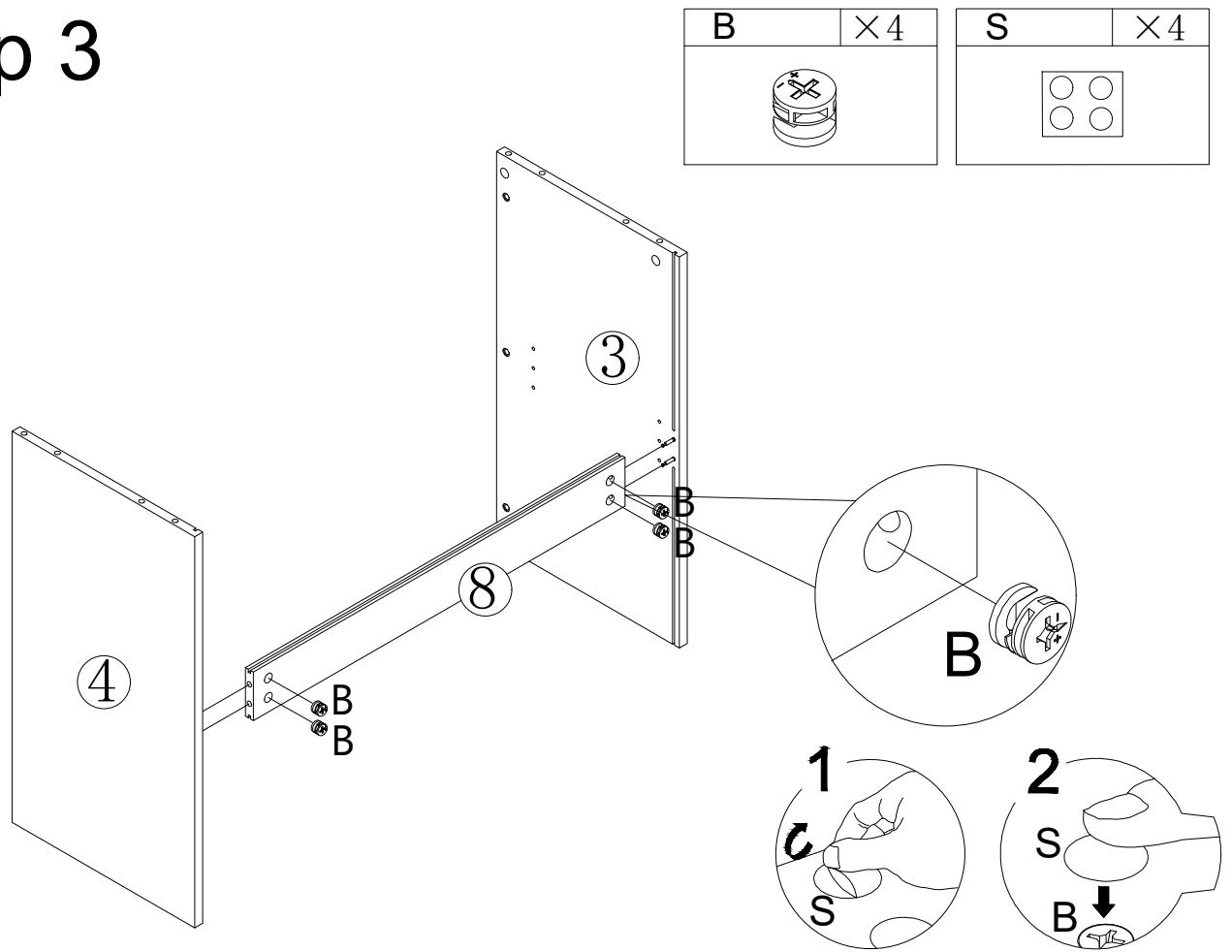
M	×1
	

Step 2

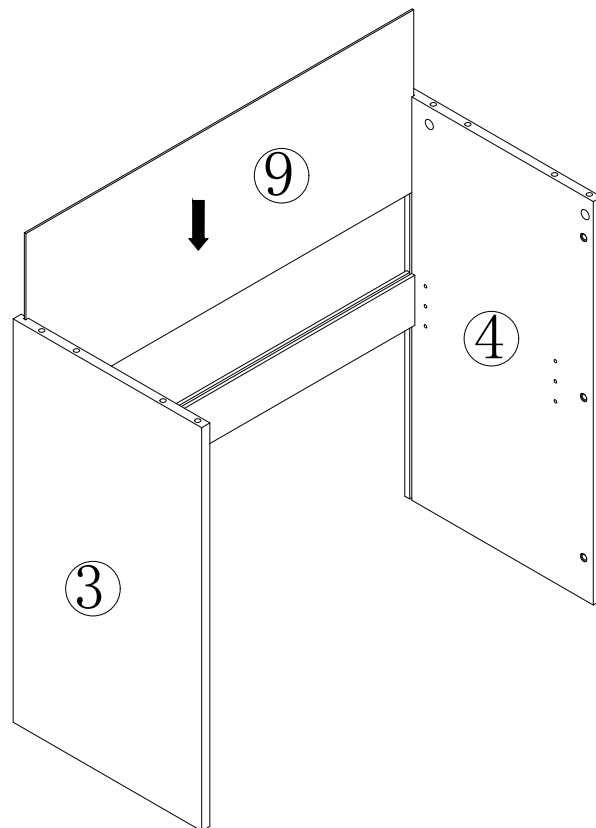


A	×4
	

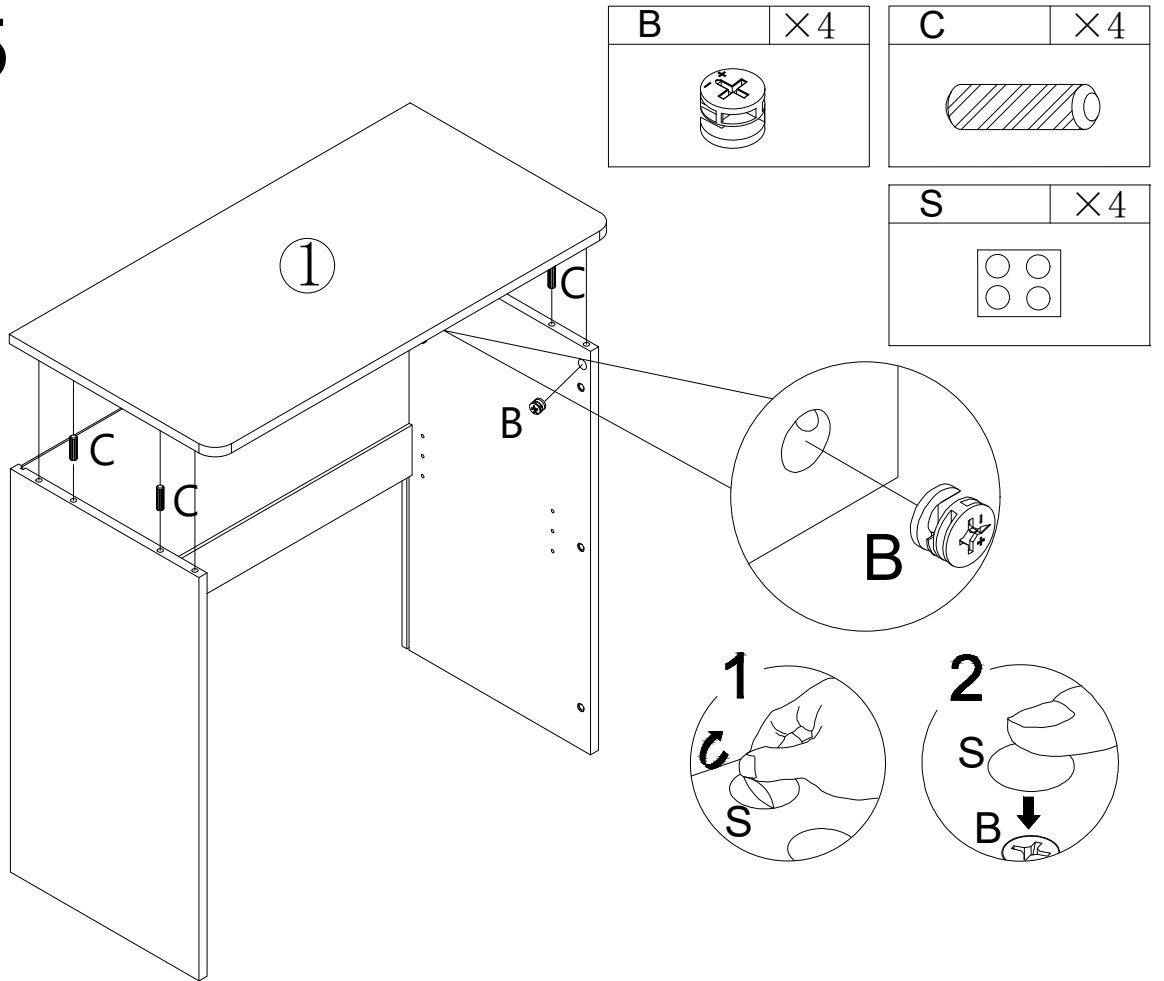
Step 3



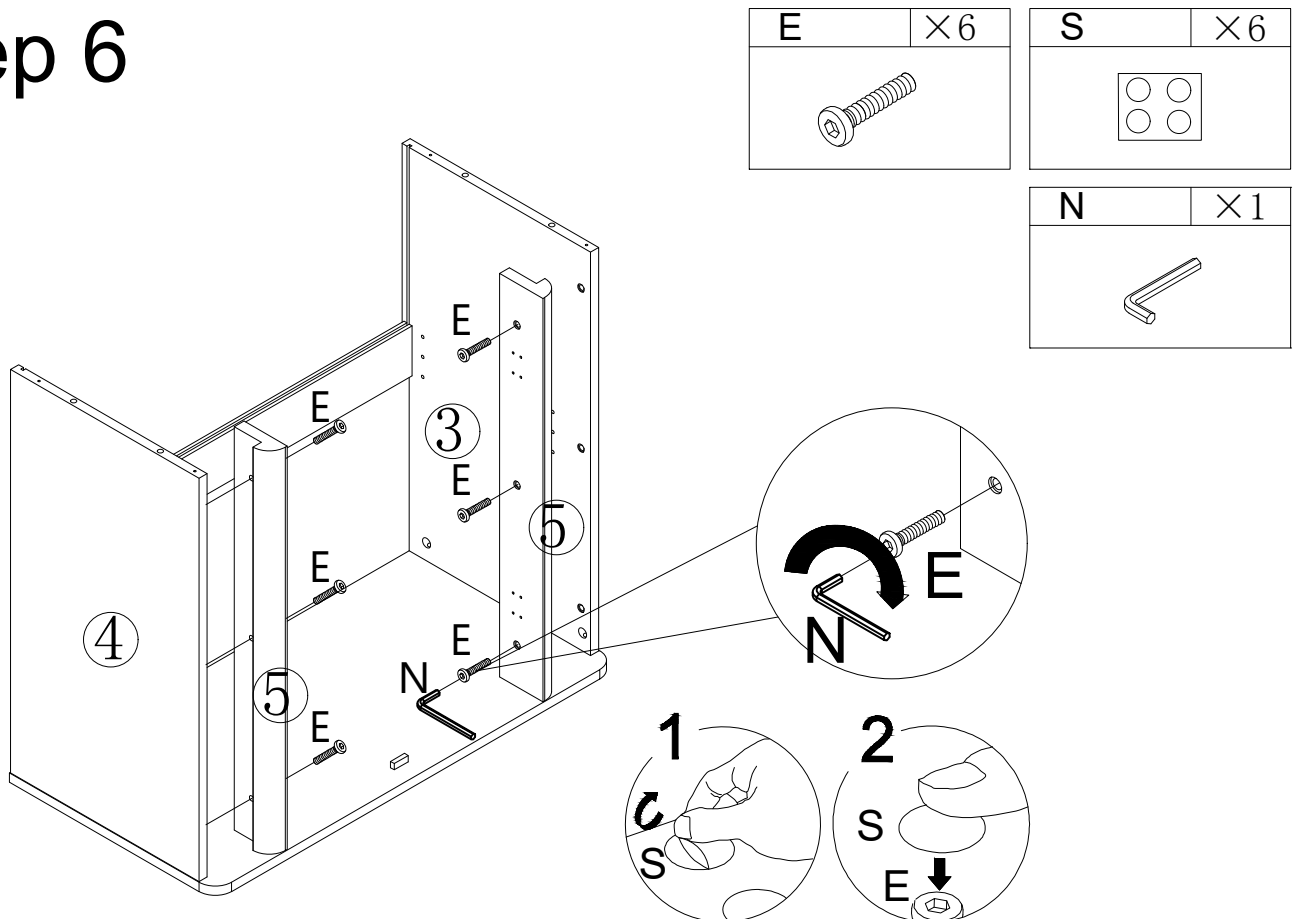
Step 4



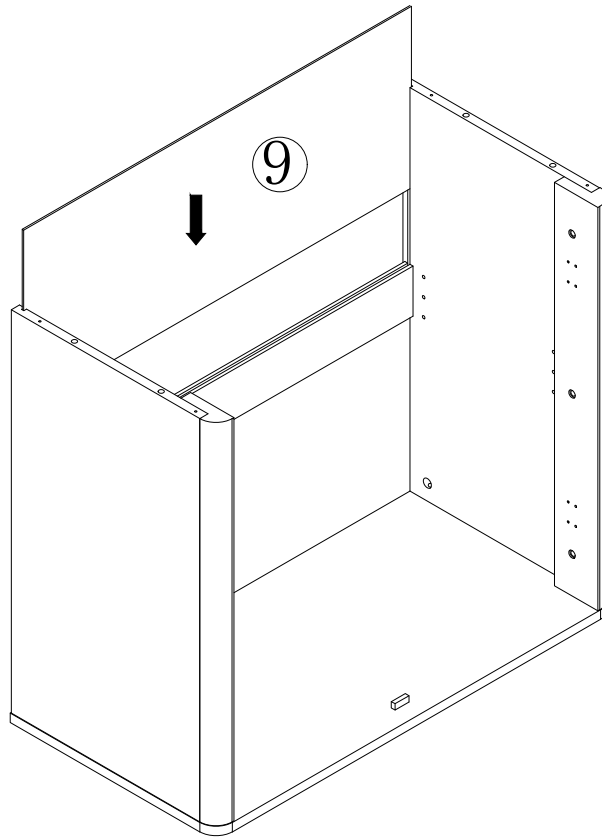
Step 5



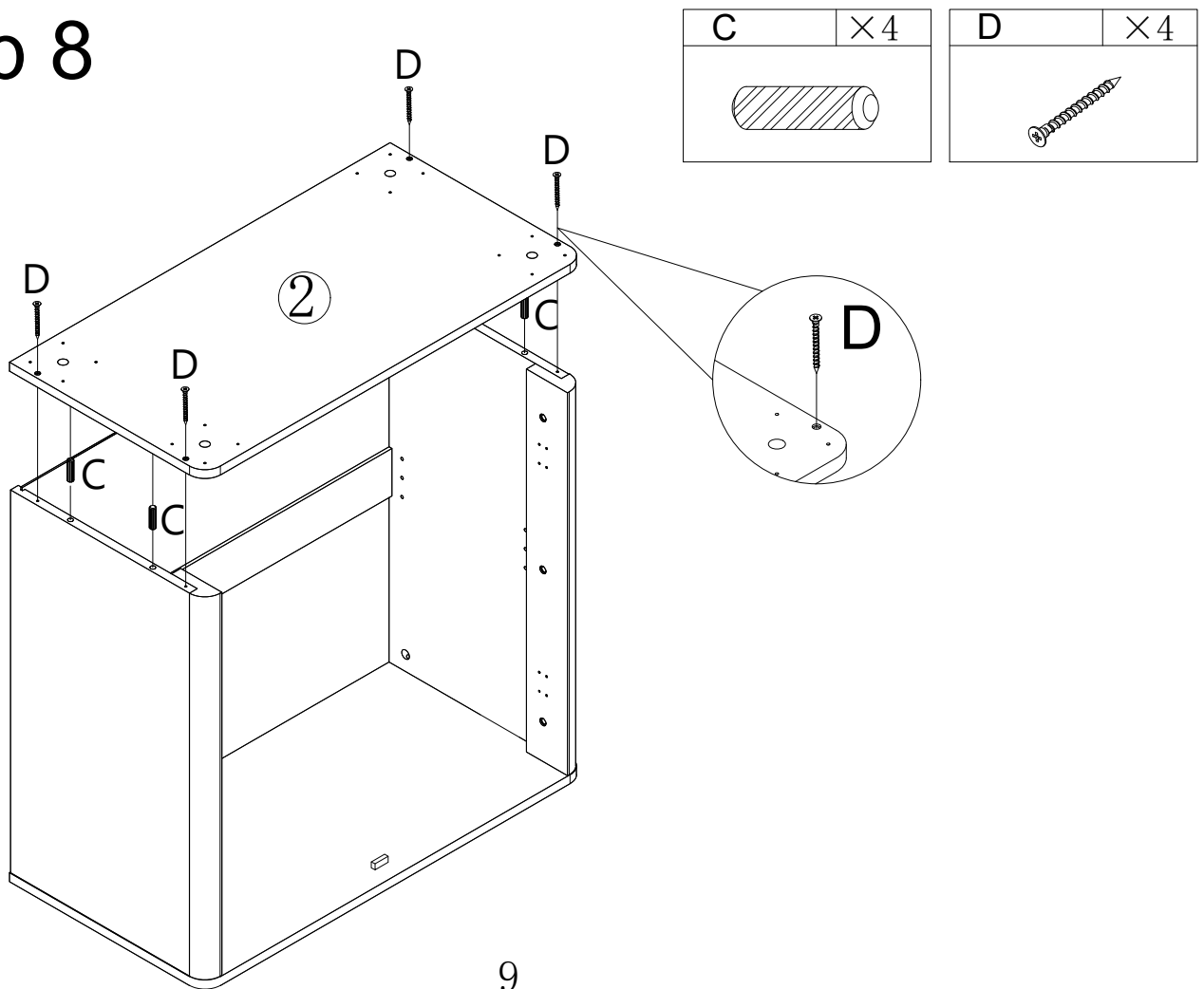
Step 6




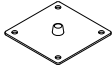
Step 7

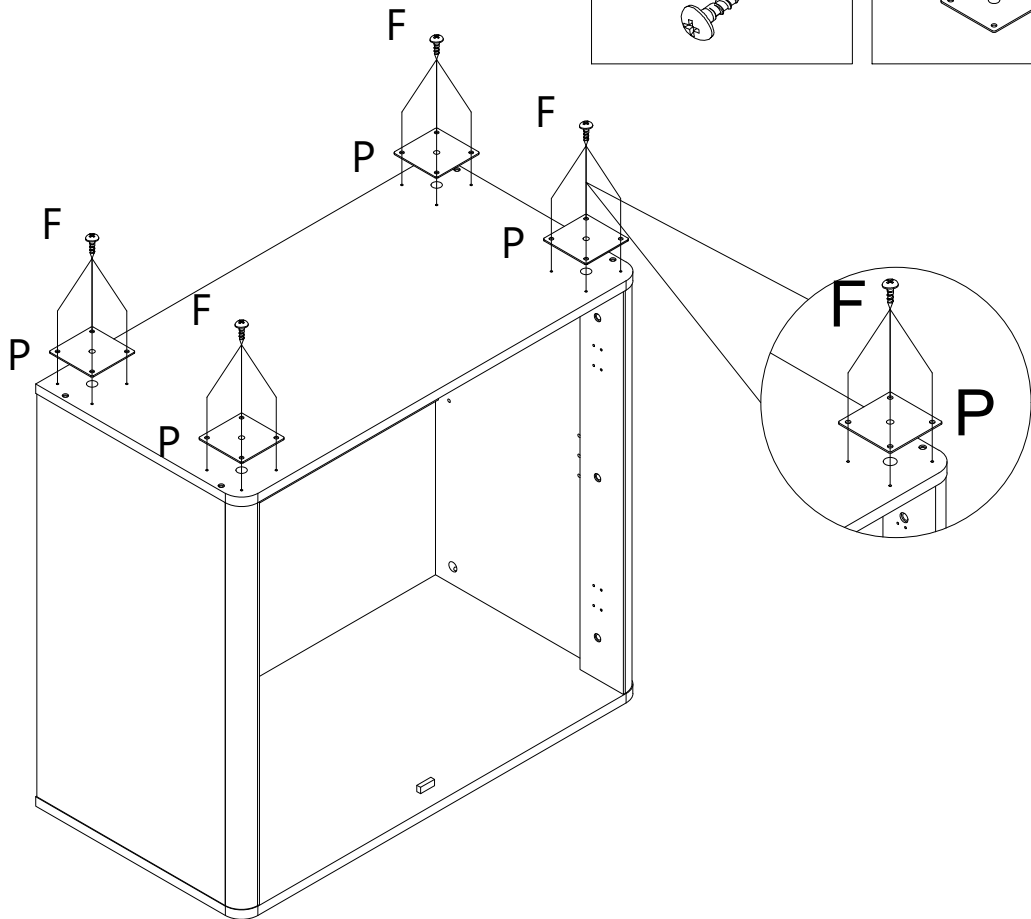


Step 8




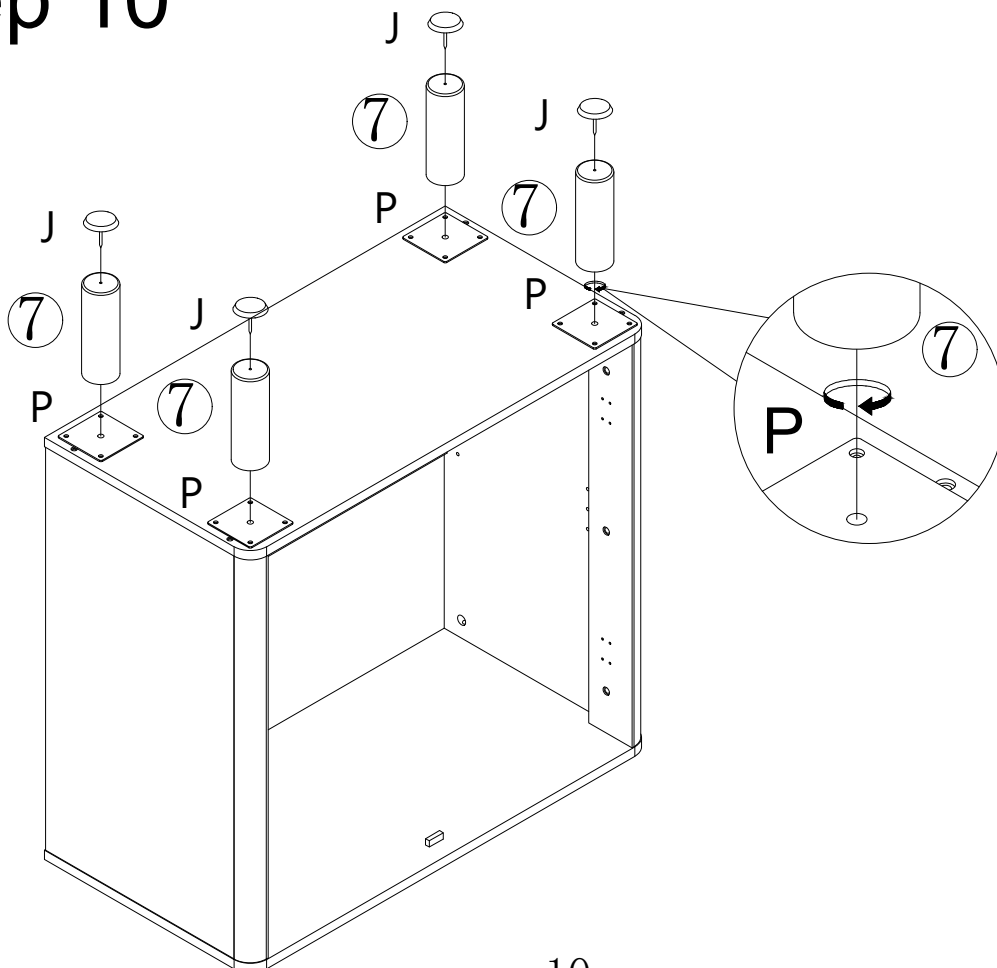
Step 9

F	×16	P	×4
			

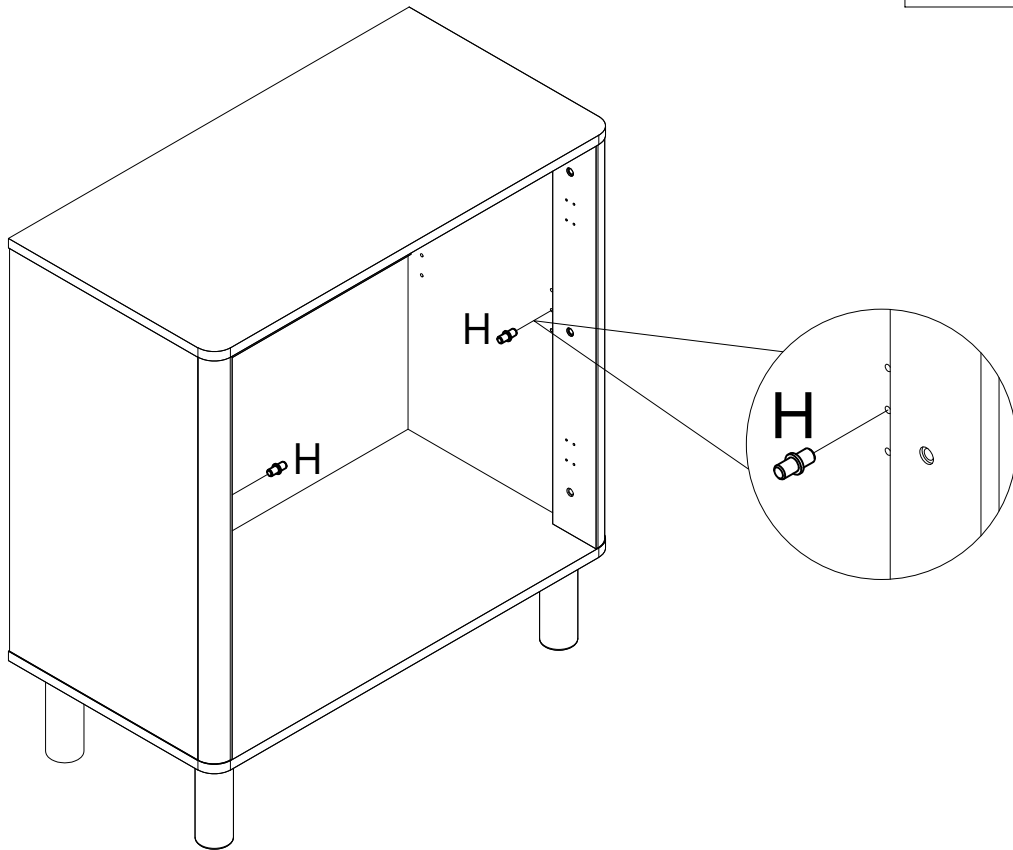
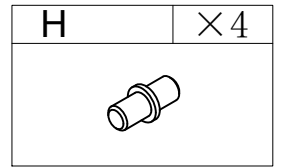


Step 10

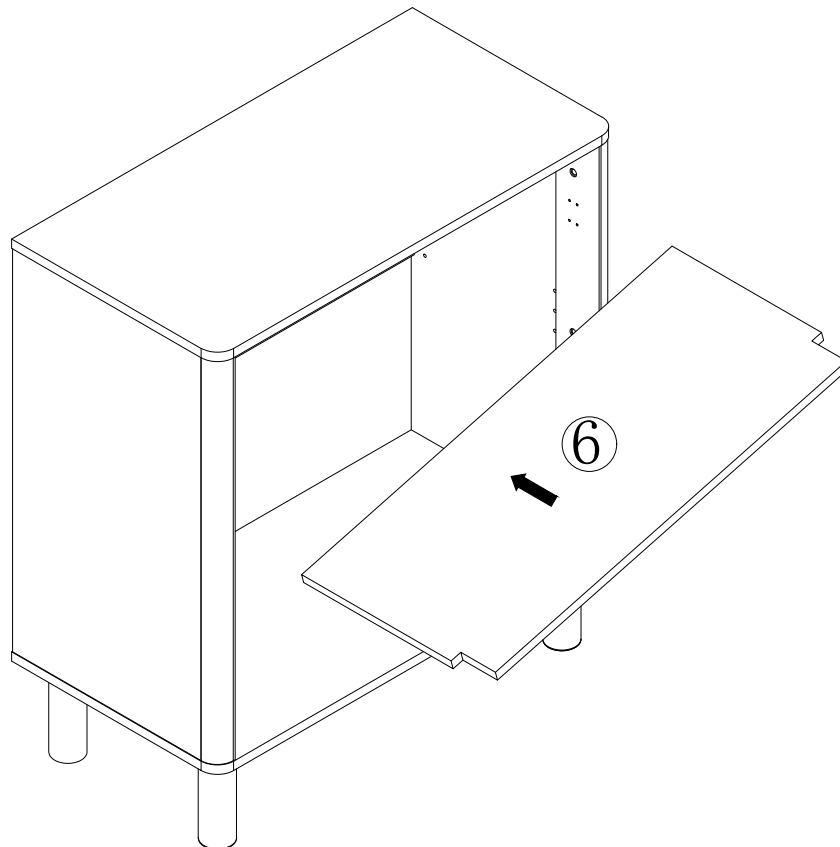
J	×4
	




Step 11

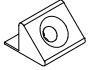


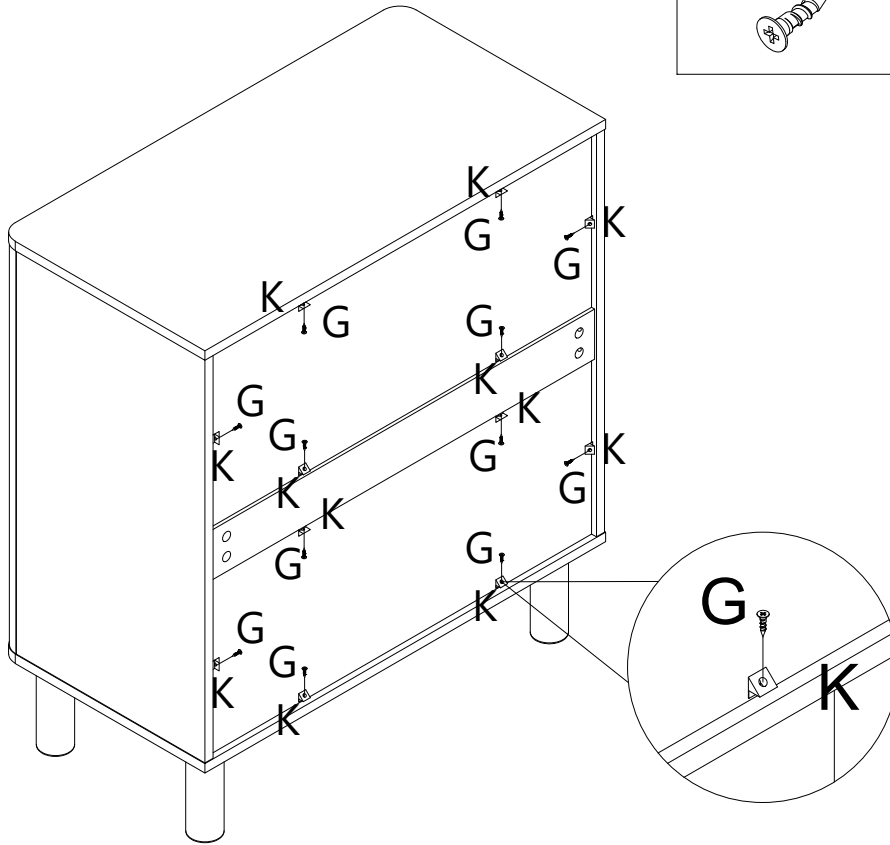
Step 12




Step 13

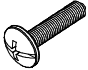
G	×12
	

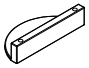
K	×12
	




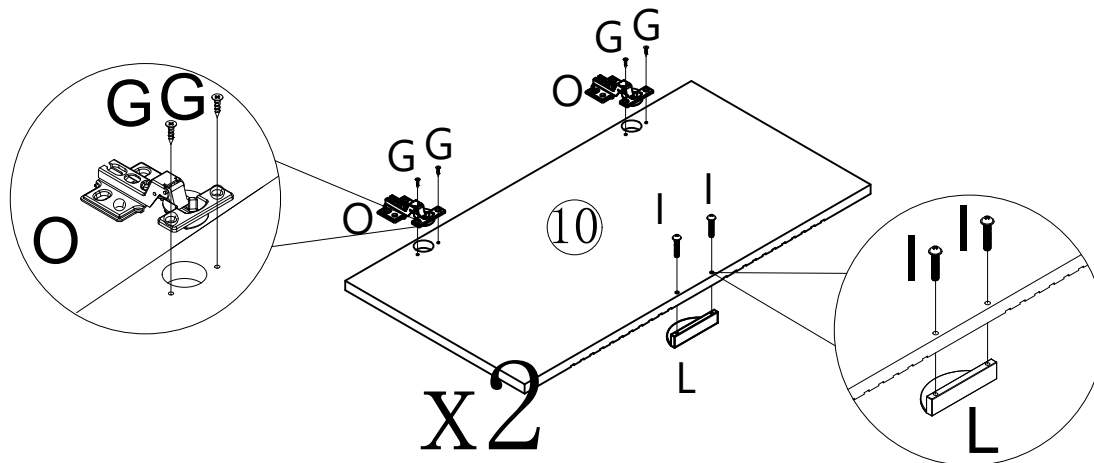
Step 14

G	×8
	


I	×4
	

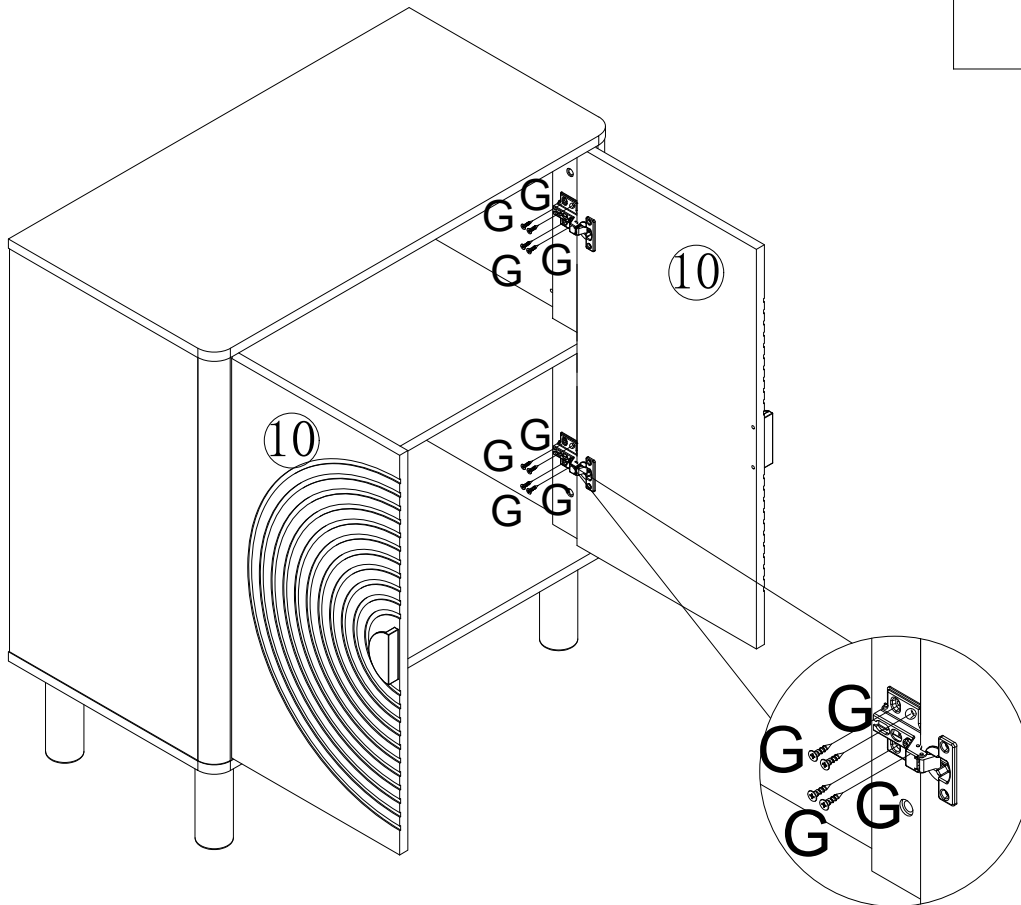
L	×2
	

O	×4
	

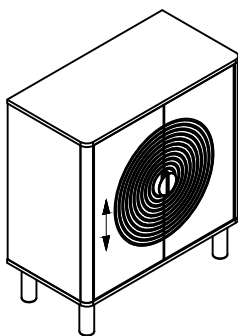


Step 15

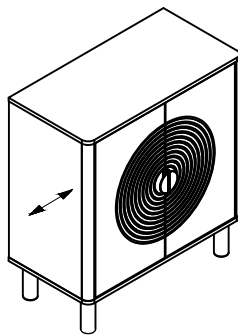
G	×16
	



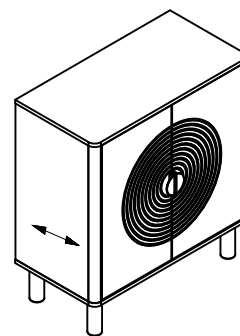
How do I get the two doors to align flat by adjusting the hinges?



1. The screws can be loosened to adjust the uneven problem under the table top.

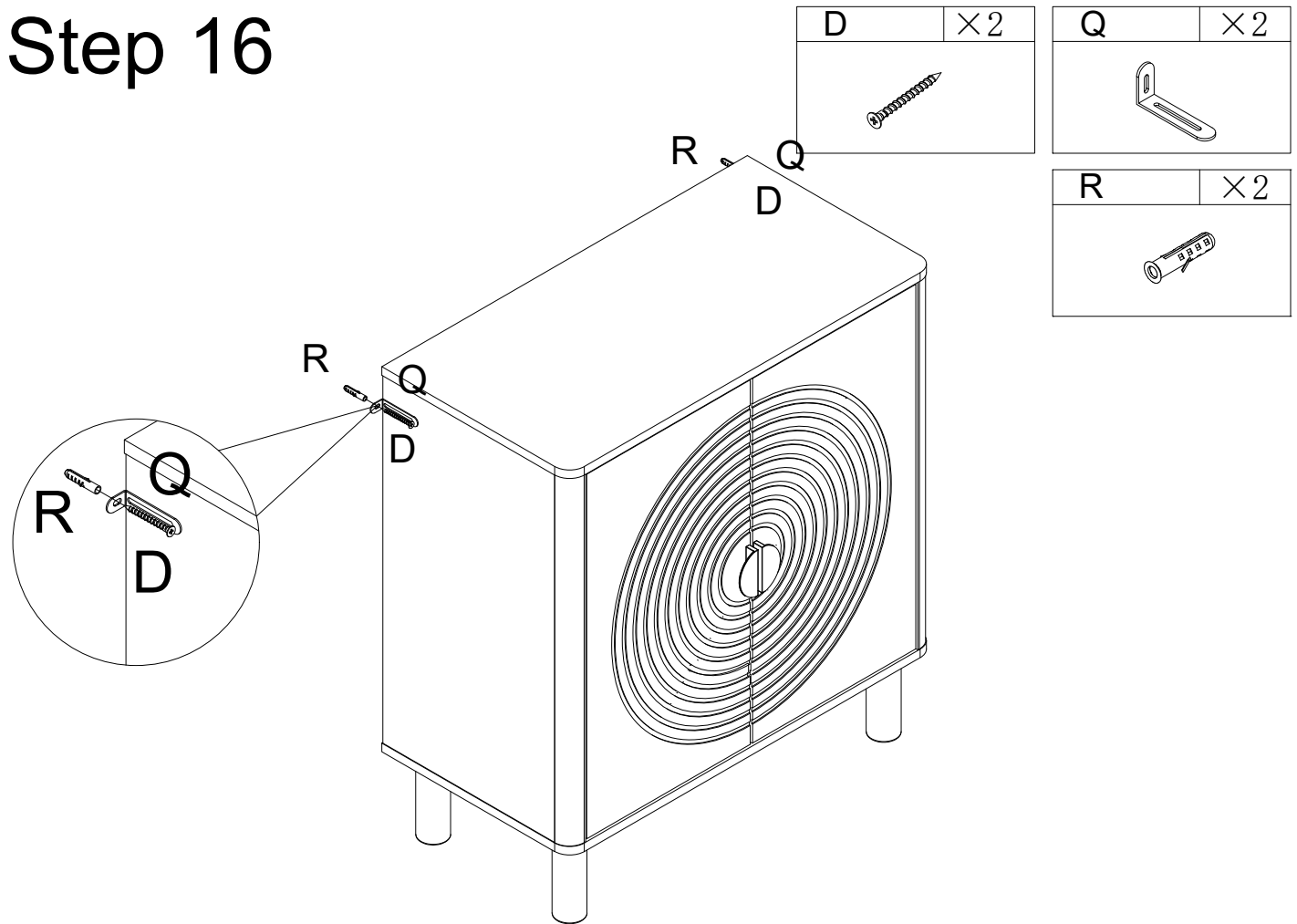


2. Adjust the screws shown in Fig. 2 and pull the door back and forth so that it can be opened smoothly.

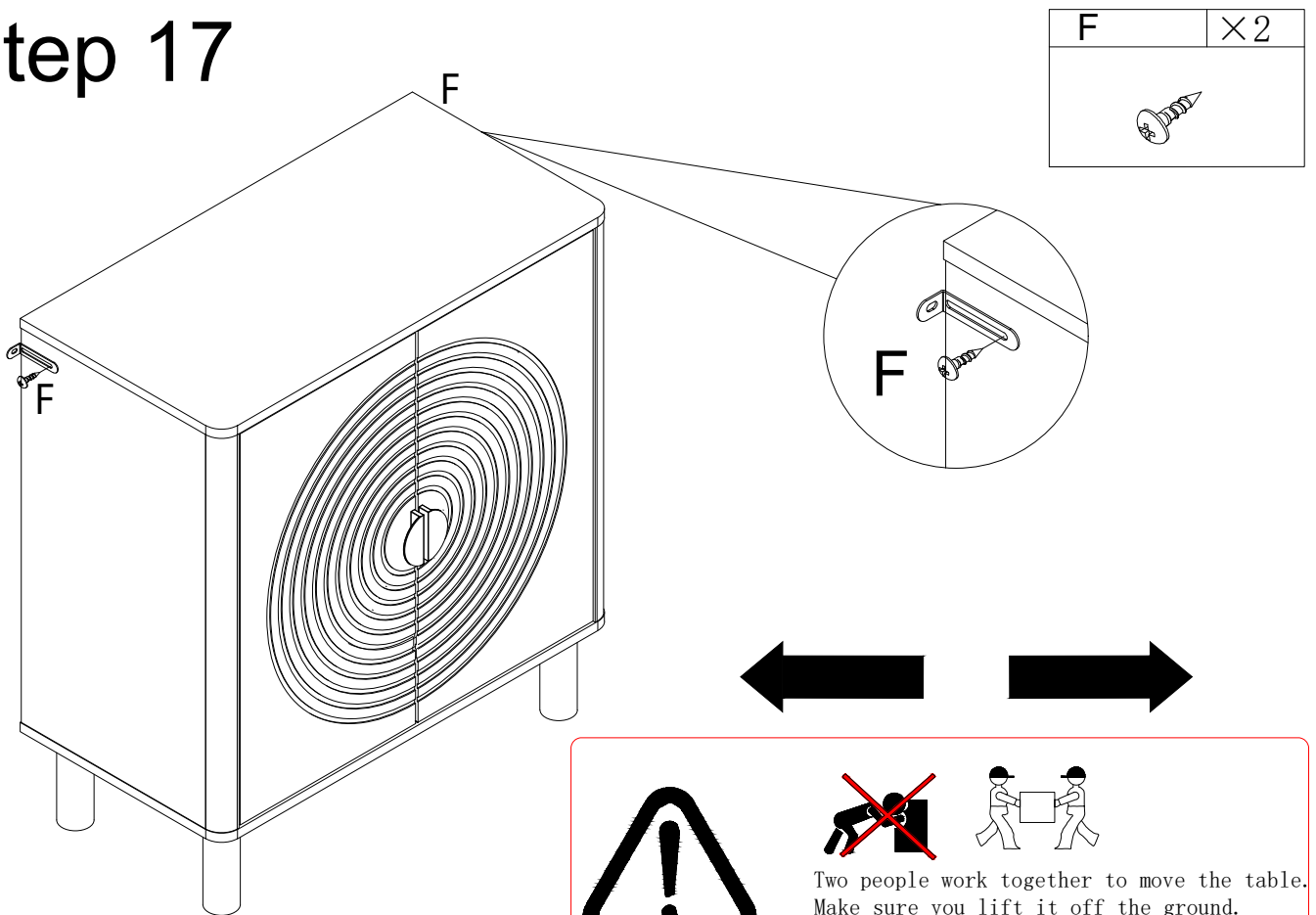


3. Adjust the screws shown in Figure 3 to adjust the door left and right to the right position.

Step 16



Step 17



Two people work together to move the table.
Make sure you lift it off the ground.
Don't push and pull.