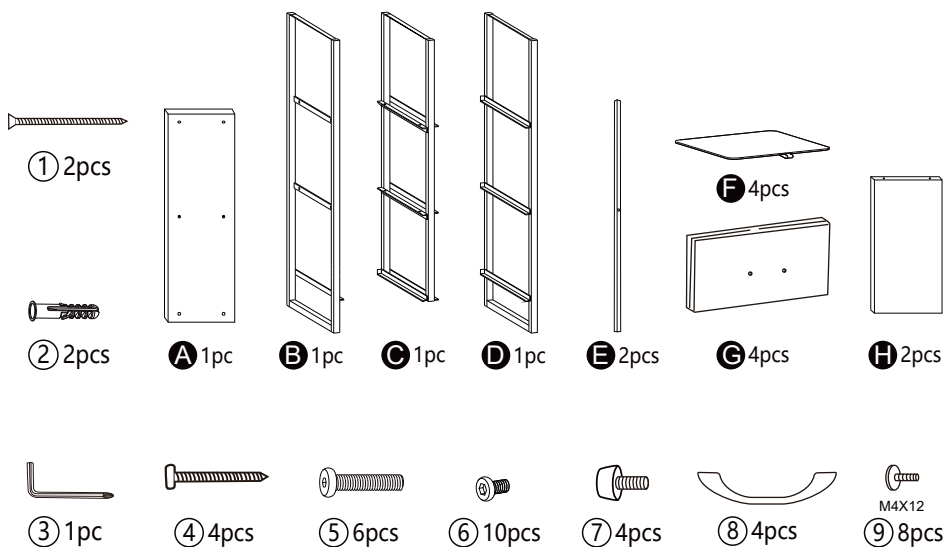


Before Assembly

- Remove all wrapping materials, staples and packing straps.
- Read the Parts List and Hardware List carefully, make sure all parts and hardware are intact.
- Place all parts on a clean and smooth surface, such as a rug or carpet, to prevent the parts from being scratched.
- Do not cross-thread screws.
- Do not use electric tools.

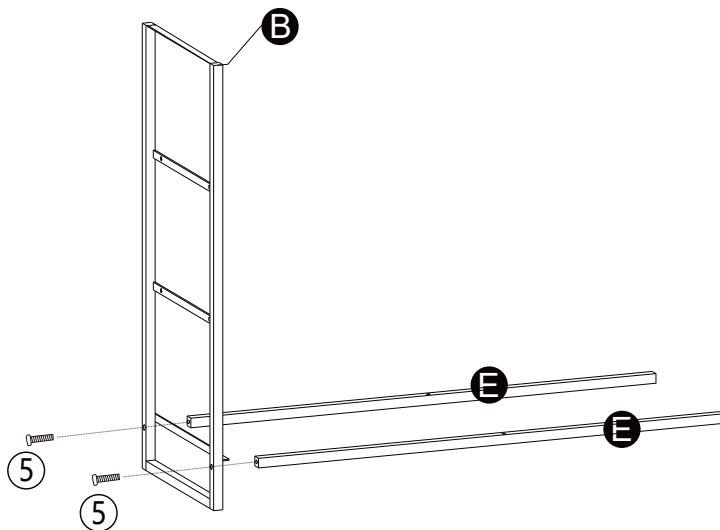
Components



1

3 (1 PCS)

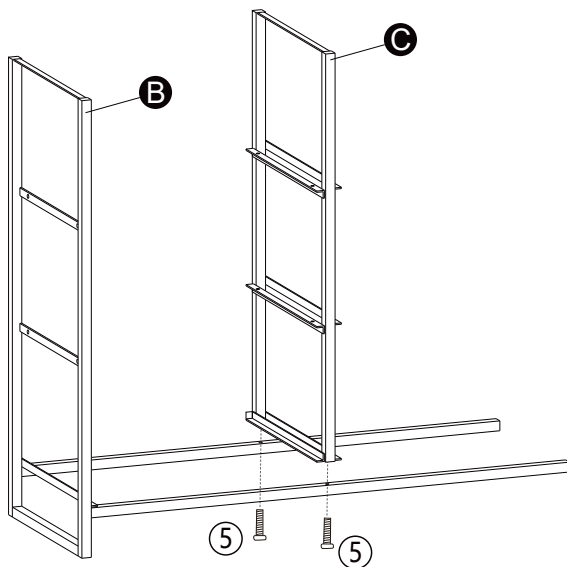
5 (2 PCS)



2

3 (1 PCS)

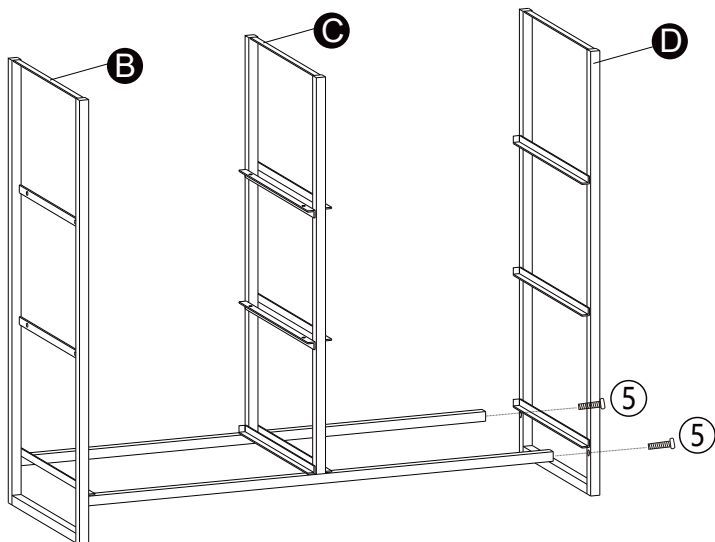
5 (2 PCS)



3

③  (1 PCS)

⑤  (2 PCS)



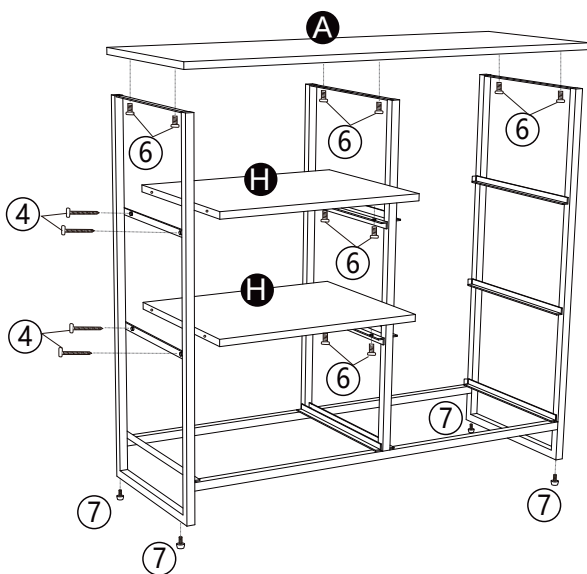
4

③  (1 PCS)

④  (4 PCS)

⑥  (10 PCS)

⑦  (4 PCS)



5

3



(1 PCS)

8

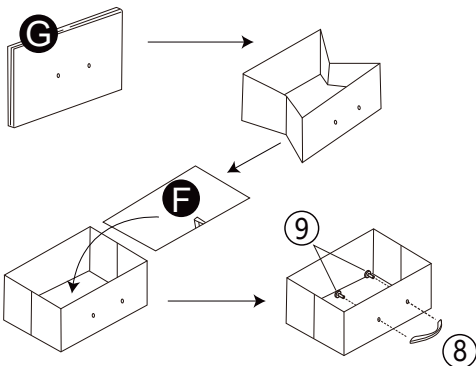


(4 PCS)

9



(8 PCS)

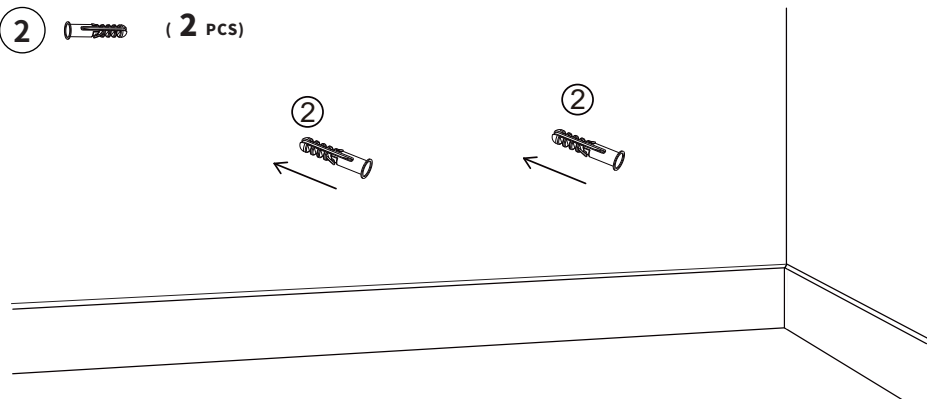
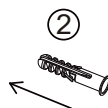


6

2



(2 PCS)



7

1



(2 PCS)

2



(2 PCS)

