

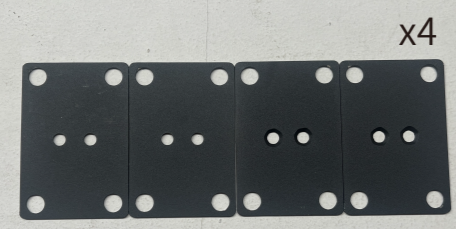



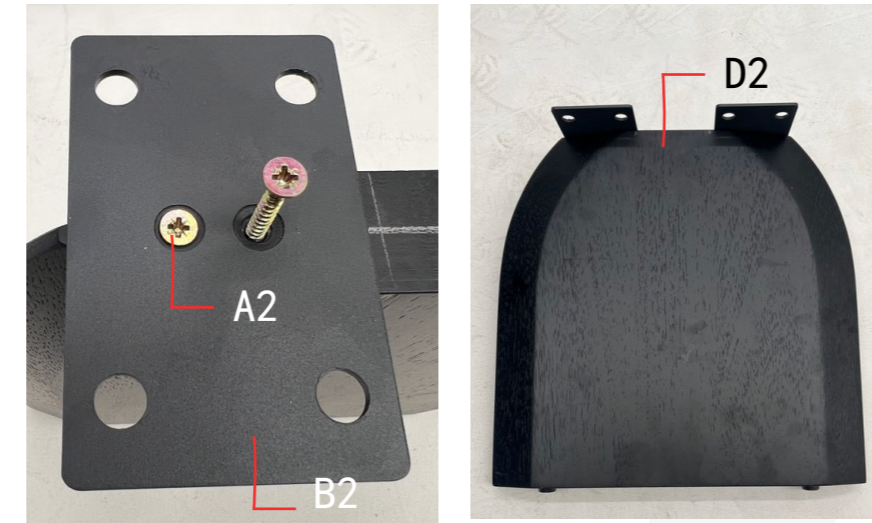


编号	图片	说明
A1	 x16	短螺丝
A2	 x8	长螺丝
B1	 x4	连接件
C1	 x2	螺丝刀
D1	 x1	茶几面
D2	 x2	茶几腿

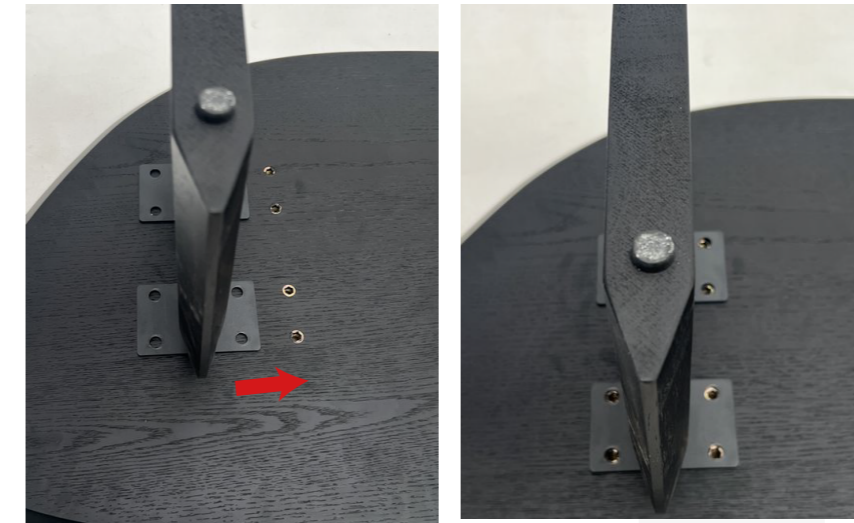
安装说明

Installation instructions

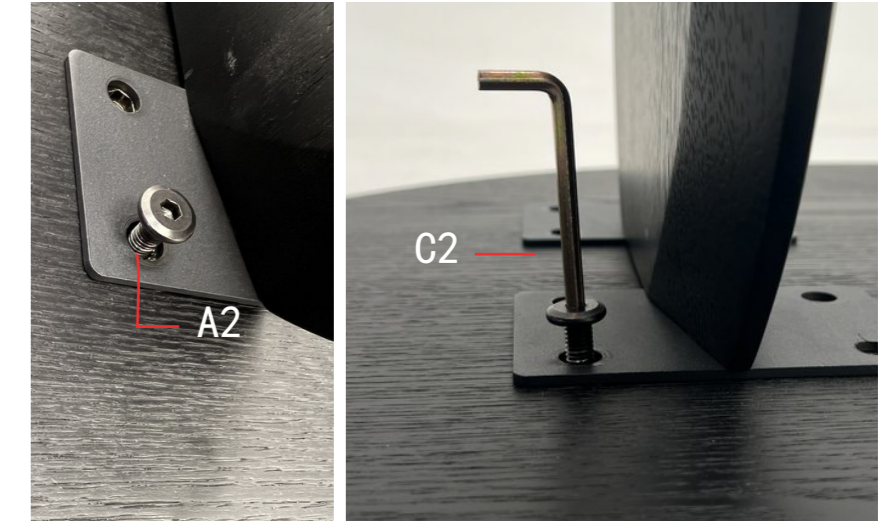
01 将部件 A2(长螺丝)通过B1装配到部件 D2(茶几腿)中。



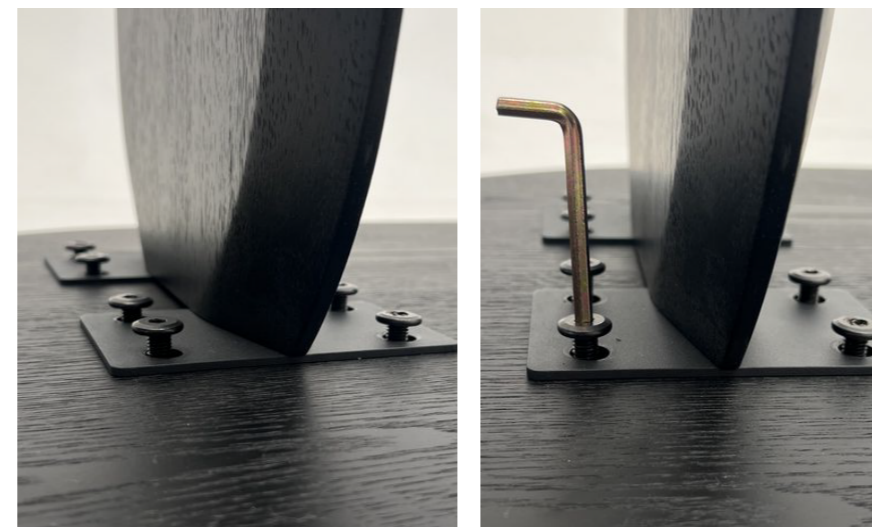
02 将B2&D2组合件孔对孔放置在D1(茶几面)的上方。



03 使用A2连接B2&D2组合件和D1(茶几面)
注意:在这一阶段不要将A2紧固。



04 将8个A2放置完成后,再将A2紧固



05 用同样的装方式,将另一只腿安装完成



06 茶几腿安装完成后将茶几翻至正面,即可使用

