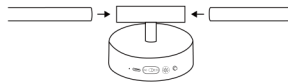
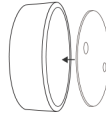


EXPLORE BRILLIANCE  
IN EVERY CORNER OF LIFE

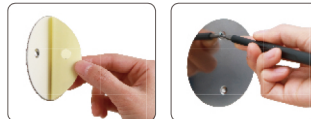
## 1. Installation Method



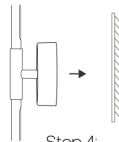
**Step 1:**  
Assemble the lights according to the arrow direction.  
Make sure all parts are firmly connected.



**Step 2:**  
Place the metal sheet  
on the magnetic area of the light.



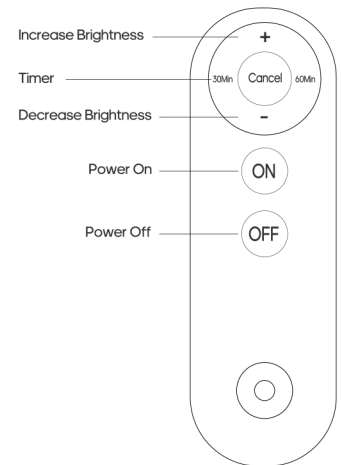
**Step 3:**  
Peel off the protective layer from  
the metal sheet or screw it for extra security.



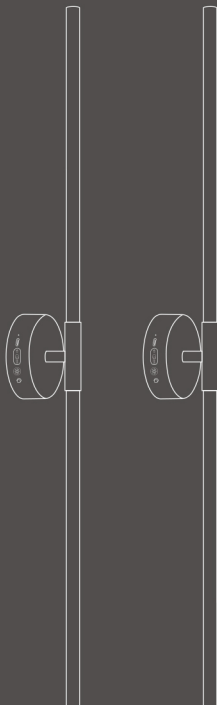
**Step 4:**  
Press the light onto a clean, dry surface and hold  
for 10 seconds to ensure secure installation.

## 2. How to use

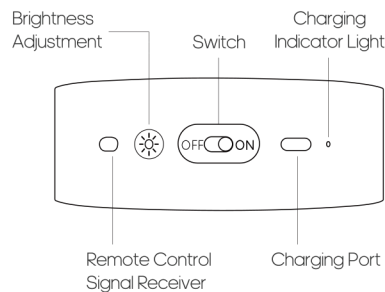
### ① Remote Control



1. Remove the battery's insulation tab before using the remote.
2. If you need to replace the battery, follow the instructions on the back of the remote control.
3. Ensure the remote control is pointed directly at the signal receiver for optimal functionality.



### ② Product



**Button**  
Short Press: Adjust Brightness [25%-50%-75%-100%]

**Indicator Light**  
Green: Fully Charged  
Red: Charging

**NOTE:** Please ensure the lights are fully charged before their first use.

## 3. Product Parameters

**Working Voltage:** 5V=2A  
**Material:** Metal+PC  
**Style:** Modern  
**Color Temperature:** Warm Light  
**Charging Method:** Type-C

## 4. Attention

- If the light becomes dim, please charge it in time.
- These lights are non-waterproof. Install them in locations away from moisture and excessive heat.
- Do not allow children to use the lights as toys to prevent accidents.
- During the warranty period, refrain from disassembling the product without permission if issues arise, as this action may void the warranty.
- Please use a regular charger with a Type-C port for charging. The rated voltage of the charger is DC5V, and the current is  $\leq 2$  amps. Do not use fast charging to avoid affecting the battery life.
- To maximize battery longevity, avoid overcharging once the battery is fully charged. If the product will not be used for an extended period, store the battery in a charged state. Fully discharging the battery may negatively impact its lifespan.

## 5. Warranty

Thank you for your purchase! We offer a 12-month warranty for our products. If you encounter any issues, please contact us on Amazon, and we will assist you promptly within 24 hours.