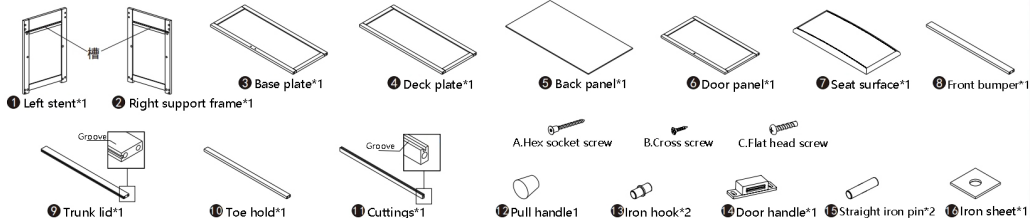


# Accessory List



# Installation Diagram

<p><b>1</b></p> <p>Fix the door magnet 14 to the base 3 plate using screws B.</p>	<p><b>2</b></p> <p>Fix the base plate 3 to the two supports using screw A.</p>	<p><b>3</b></p> <p>Fix the baseboard 10 with screw A.</p>	<p><b>4</b></p> <p>Fix the panel 4 with screw A</p>
<p><b>5</b></p> <p>Move on to the next step where screw A is used to fix the stake 11.</p>	<p><b>6</b></p> <p>Move forward and insert the straight iron pin 15 into the hole of the bracket.</p>	<p><b>7</b></p> <p>Screw C is inserted through the iron sheet 16 and screwed onto the handle 12. Then, the iron pin 13 is inserted into both ends of the door 6.</p>	<p><b>8</b></p> <p>Insert the iron pins at both ends of the door into the slots of the bracket.</p>
<p><b>9</b></p> <p>Insert the back panel 5 onto the slot 11 of step 5.</p>	<p><b>10</b></p> <p>Fix the rear trim 9 and the front trim 8 with screw A.</p>	<p><b>11</b></p> <p>Just place the stool top 7 on it and the installation is complete.</p>	