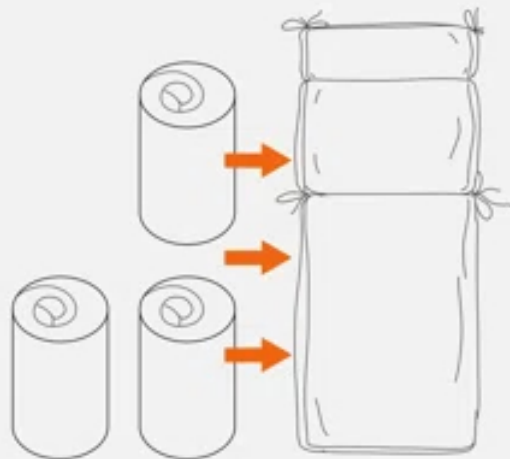


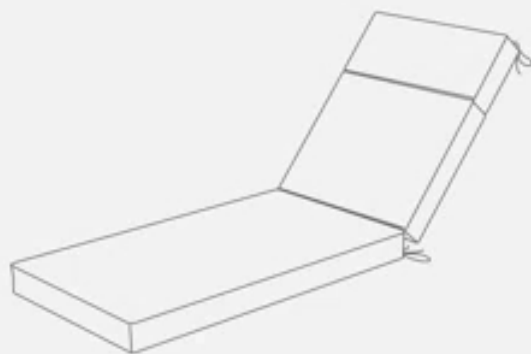
# EASY INSTALLATION



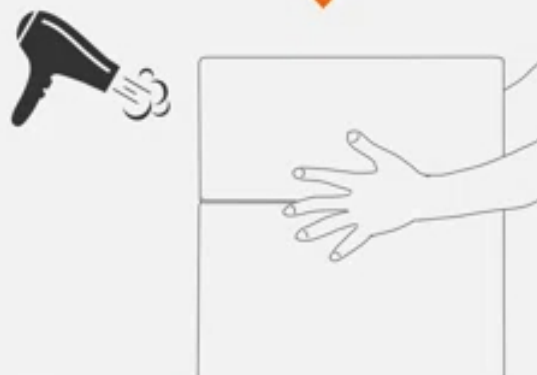
**Step 1: Unpack and check the items**  
Please don't cut too deep when unboxing



**Step 2: Assemble cushions**  
Insert the foams into the cover and zip up



**Step 4: Get them back in shape**  
Place in a dry, sunny spot for 24-48 hours before use



**Step 3: Pat gently**  
Or use a dryer for a faster restoration