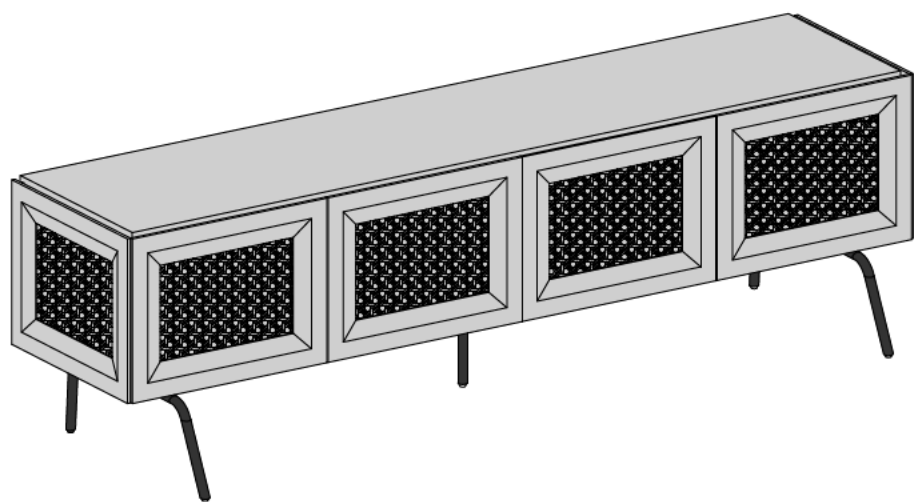


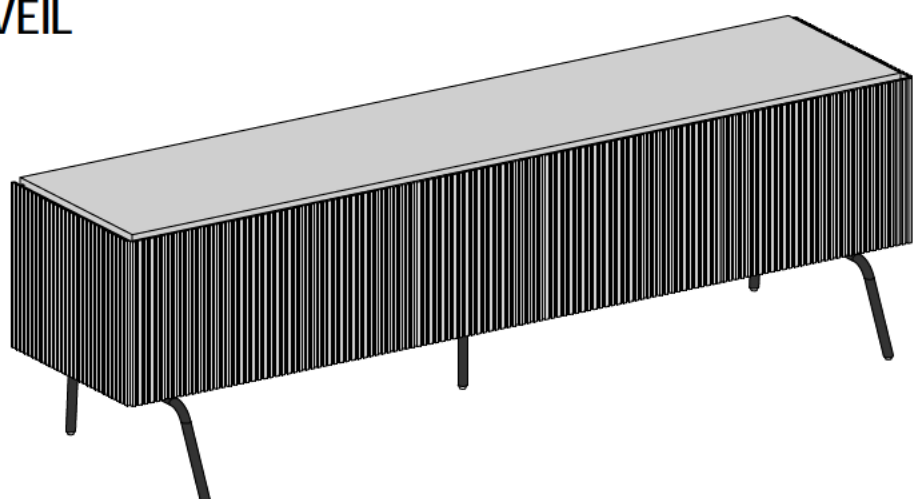
ASSEMBLY INSTRUCTION



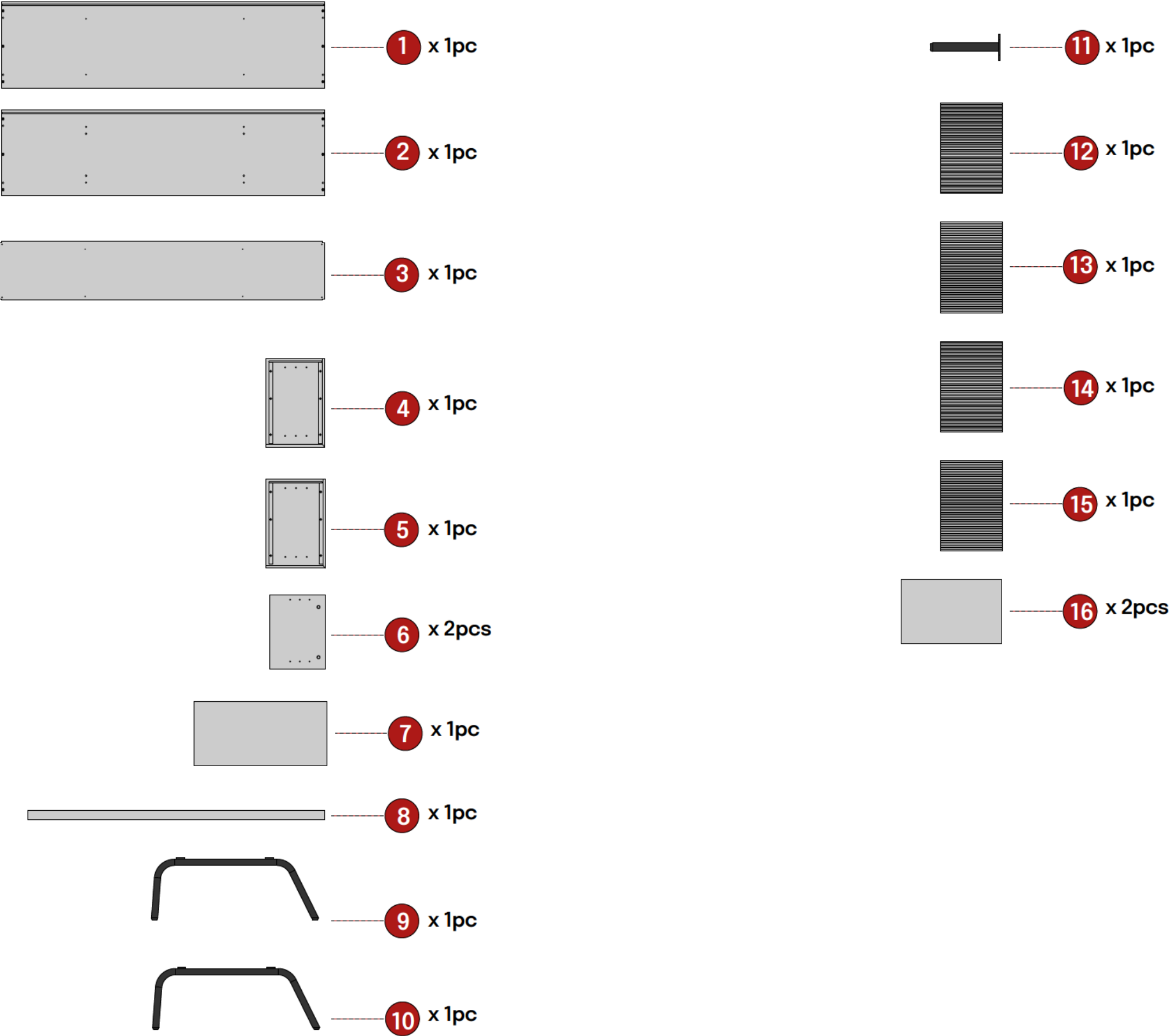
TEAM ASSEMBLY RECOMMENDED










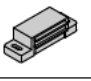



VEIL



Components



HARDWARE LIST

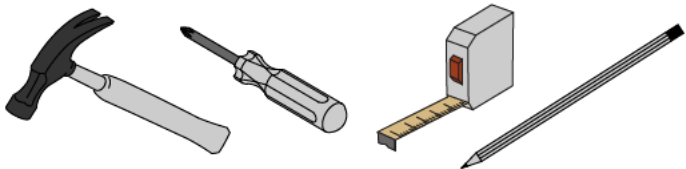
A		M6 x 30 Bolt	16
B		M6 x 15 Bolt	10
C		M7 x 40 Screw	4
D		Cam Lock	4
E		M4 x 15 Screw	48
F		Shelf Pin	12
G		M4 x 20 Screw	8
H		Magnetic Door Catch	4
I		M3 x 15 Screw	8
J		Door Hinge	8
K		M4 Allen Key	1

Ensure that all parts and hardware are available before beginning assembly.

Follow each step carefully to ensure the proper assembly of this product.

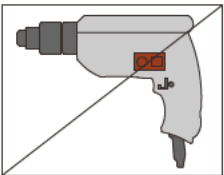
Two people are recommended for ease in the assembly of this product.

A Phillips head screwdriver, pencil, hammer and tape measure is required for the assembly of this product.

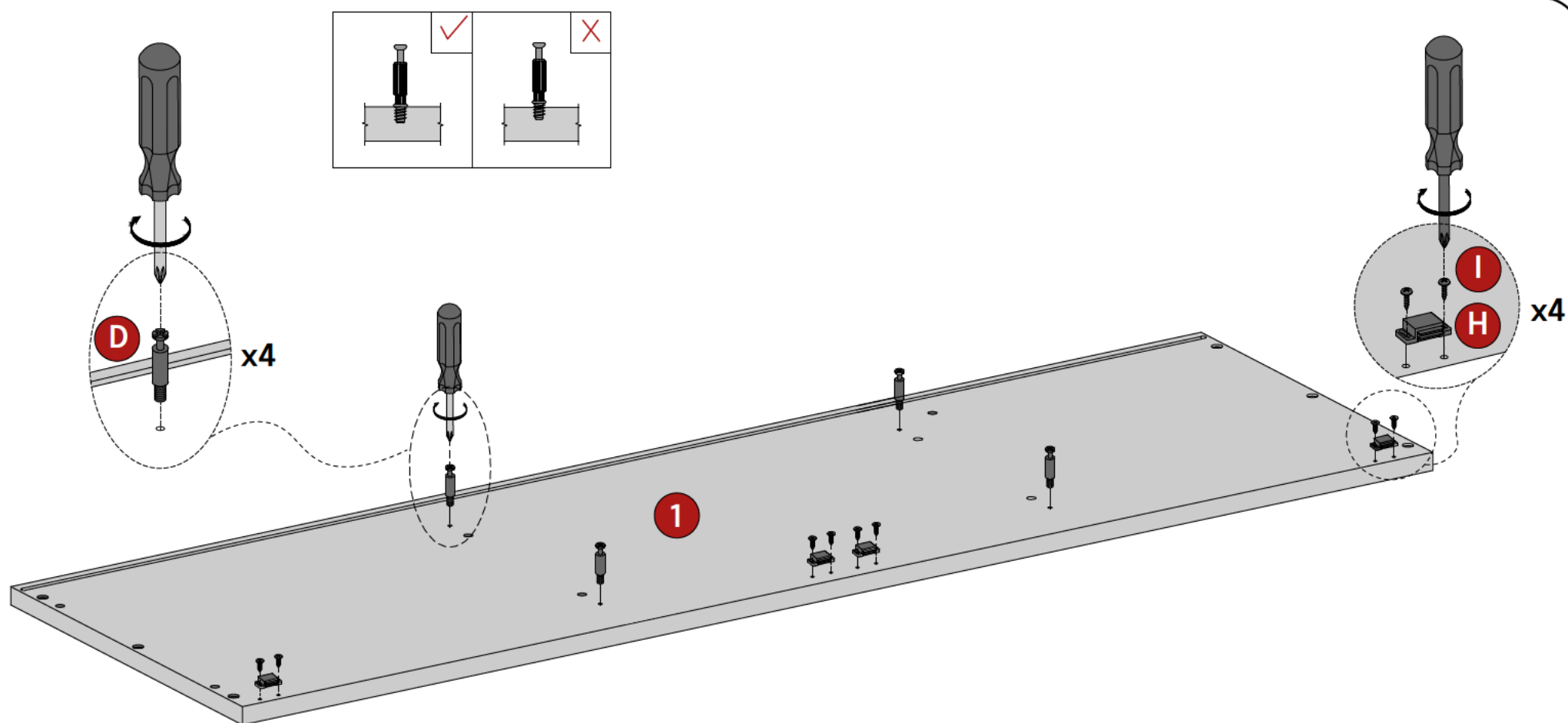


Not included.

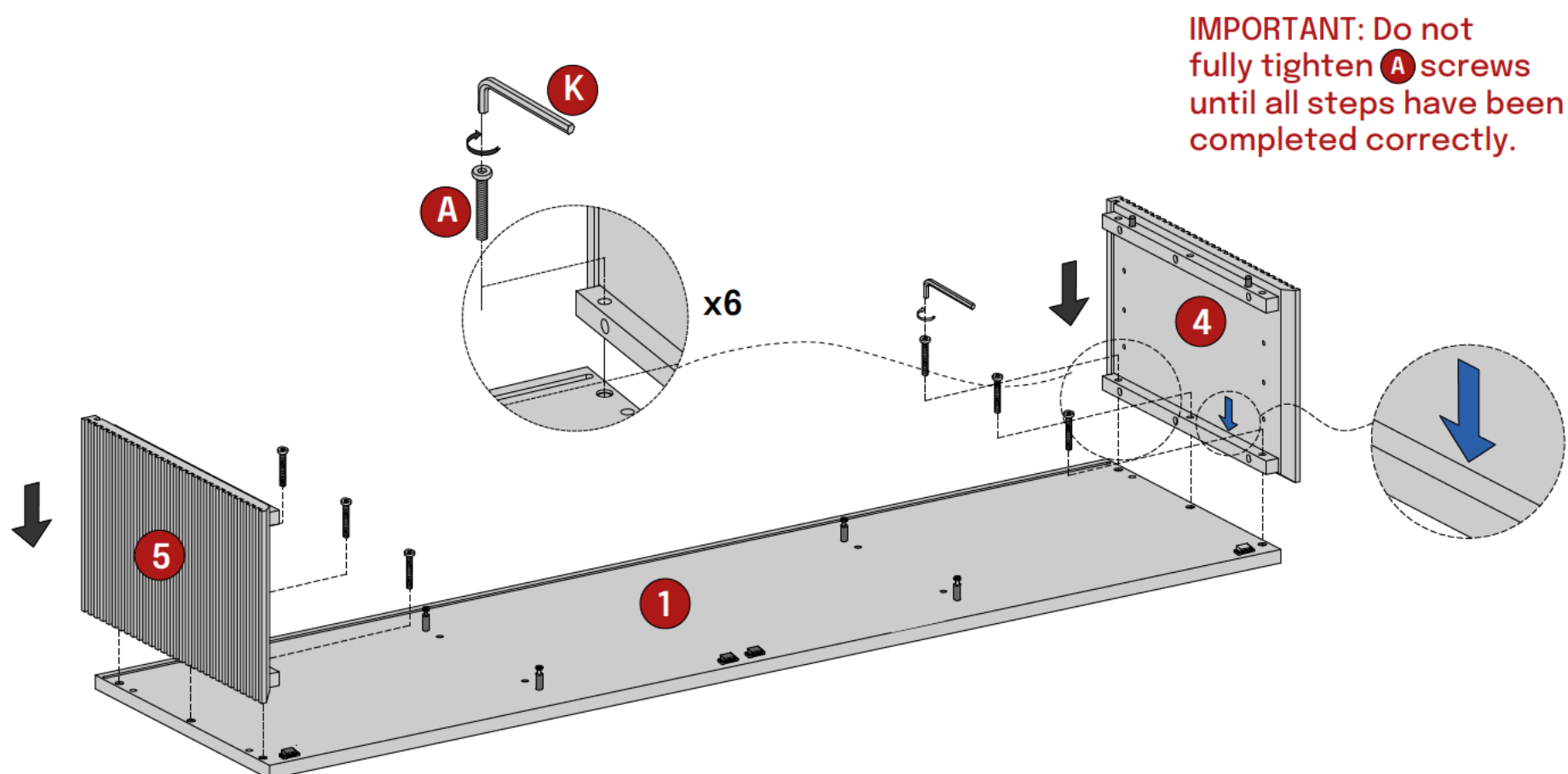
Power tools should not be used to assemble this product.



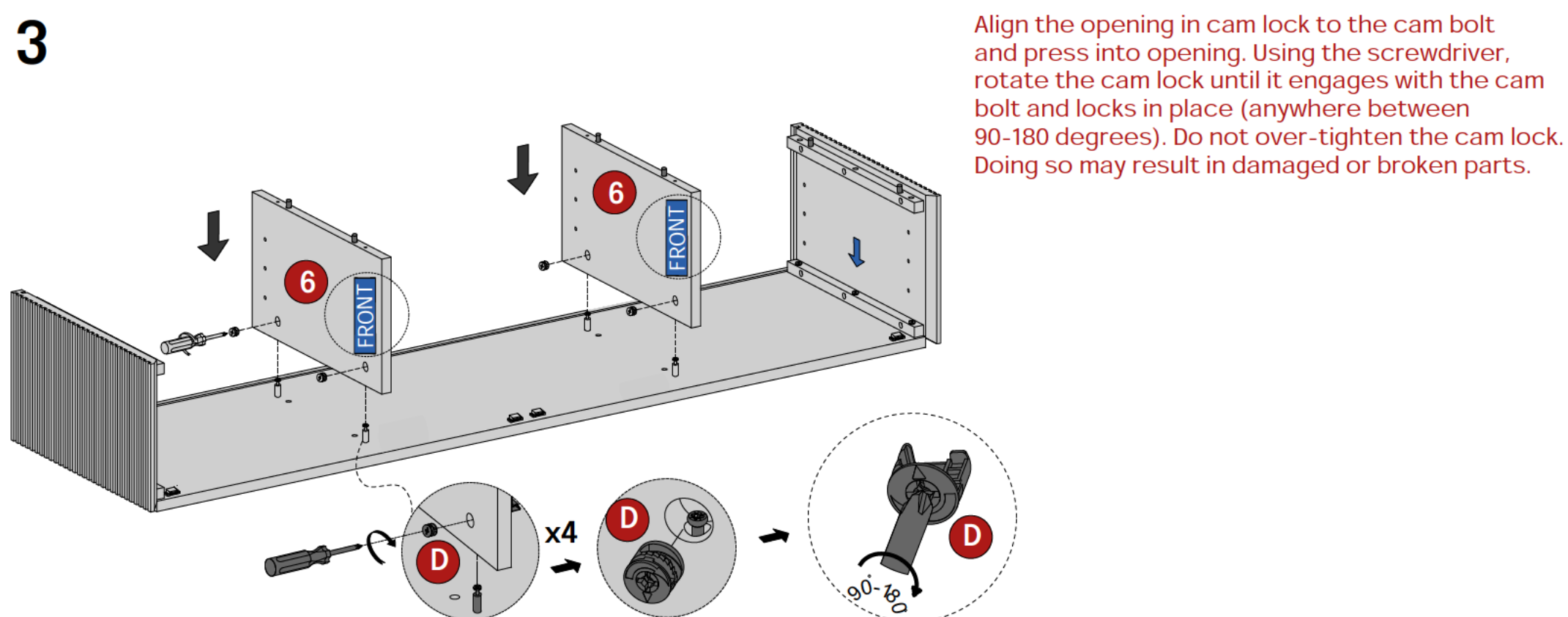
1



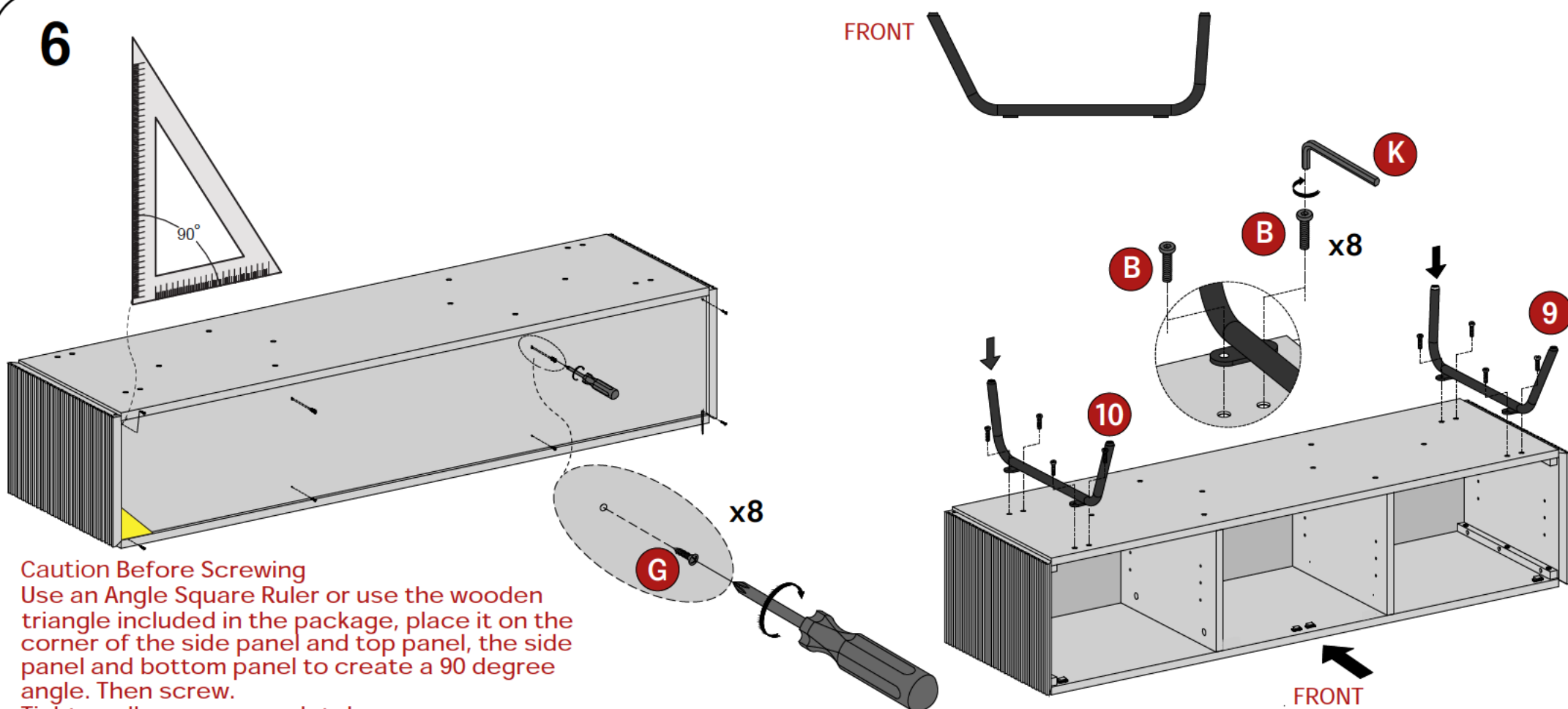
2



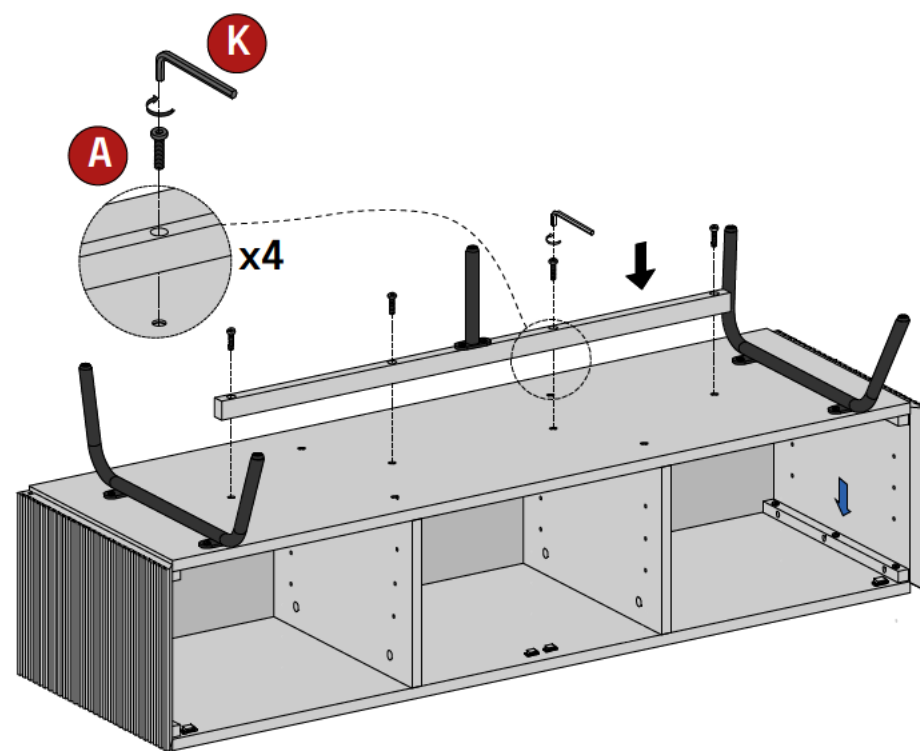
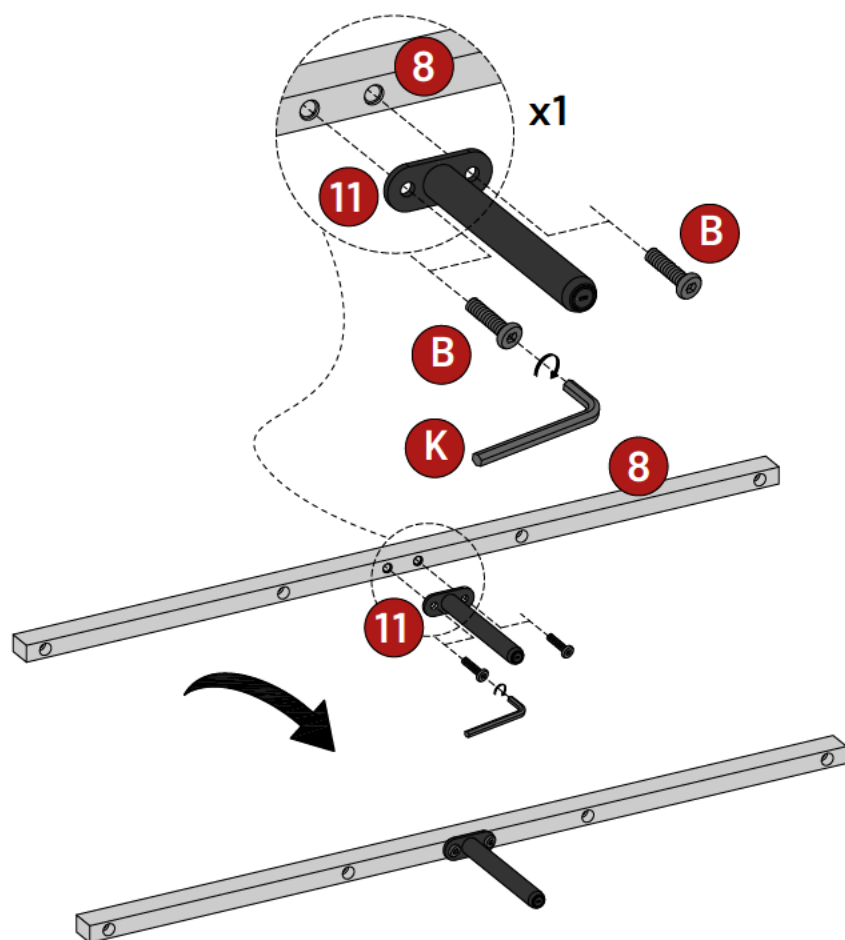
3



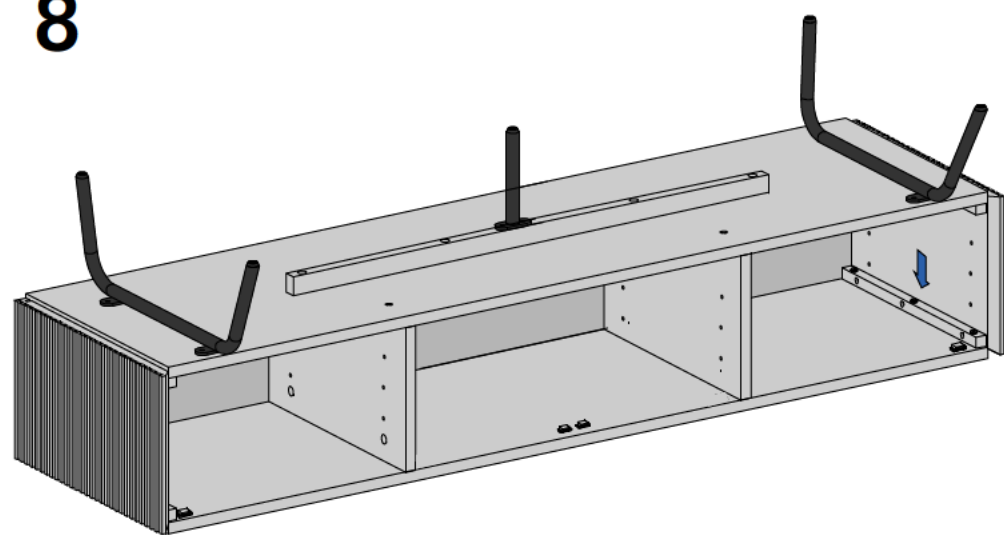
6



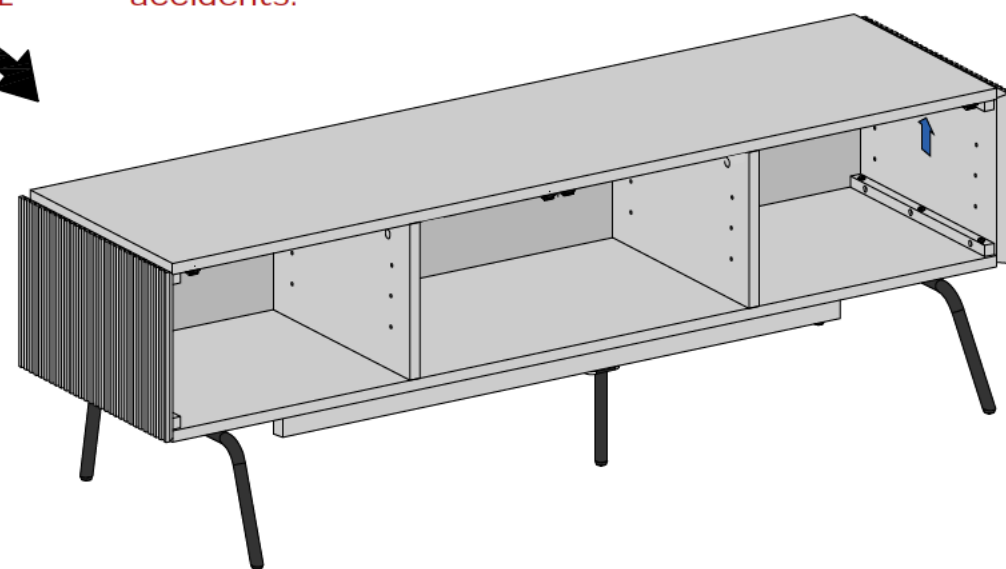
7



8



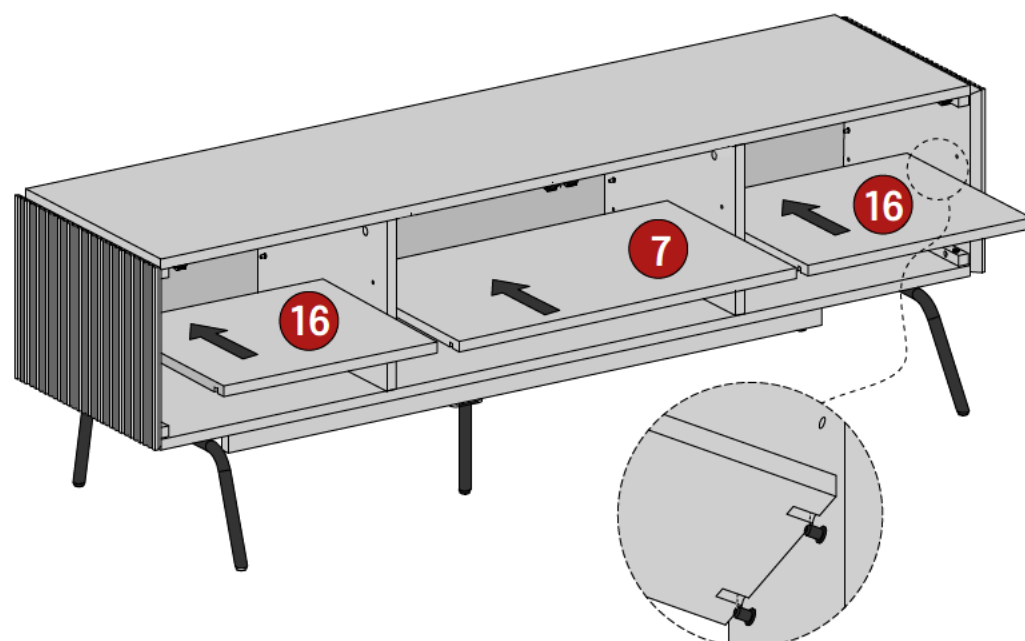
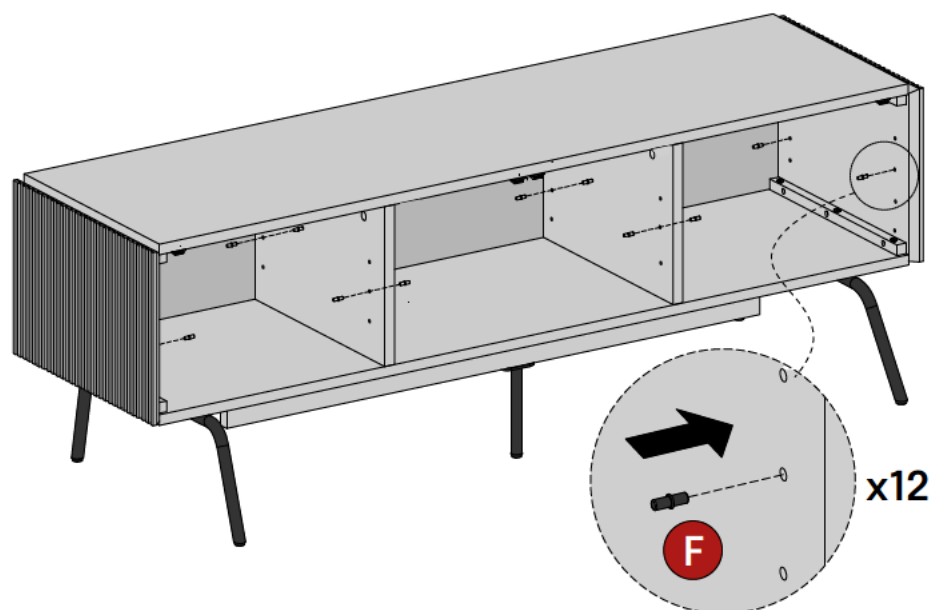
ROTATE



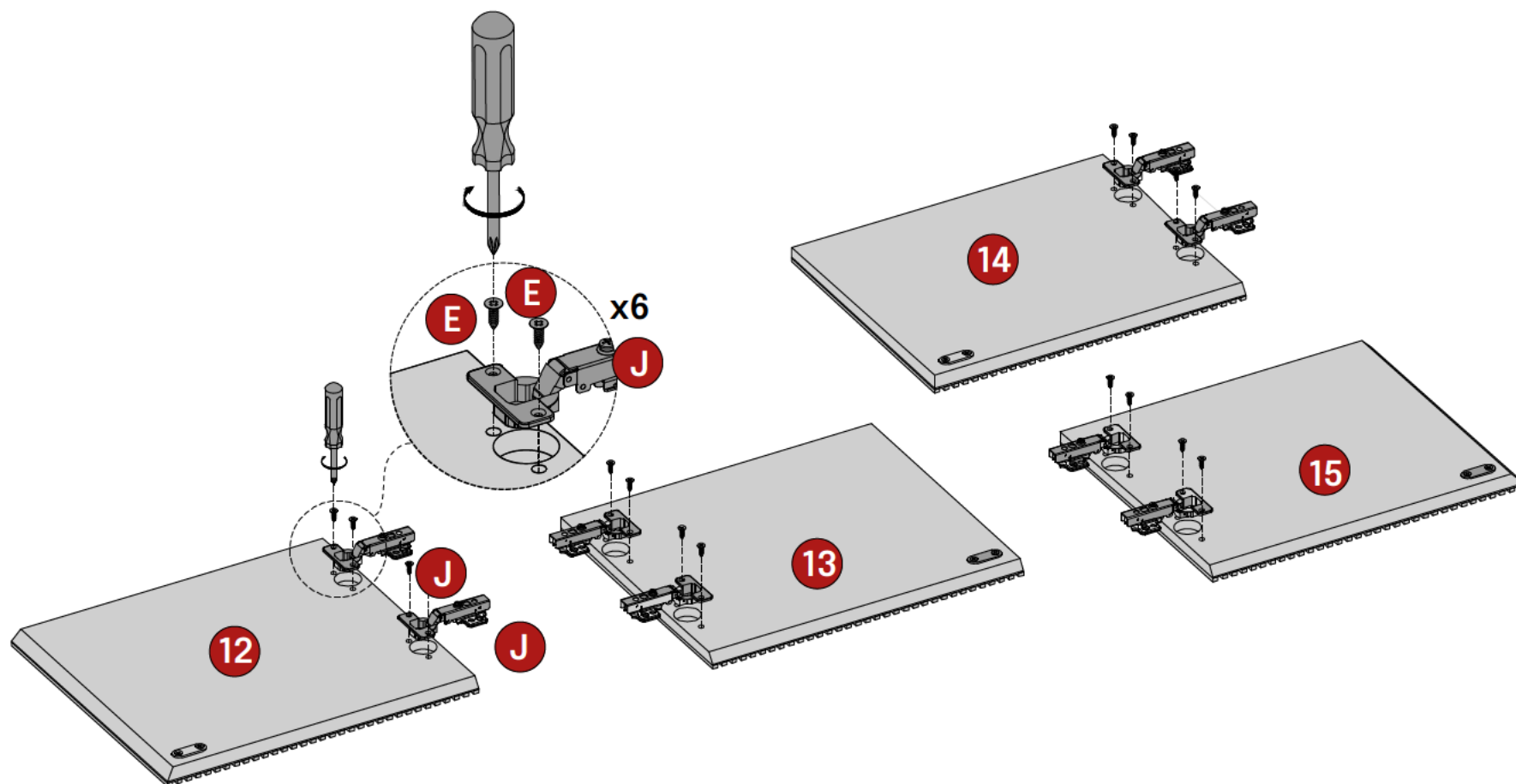
Caution When Flipping the Sideboard Exercise

Make sure to have at least two people involved to ensure stability and prevent accidents.

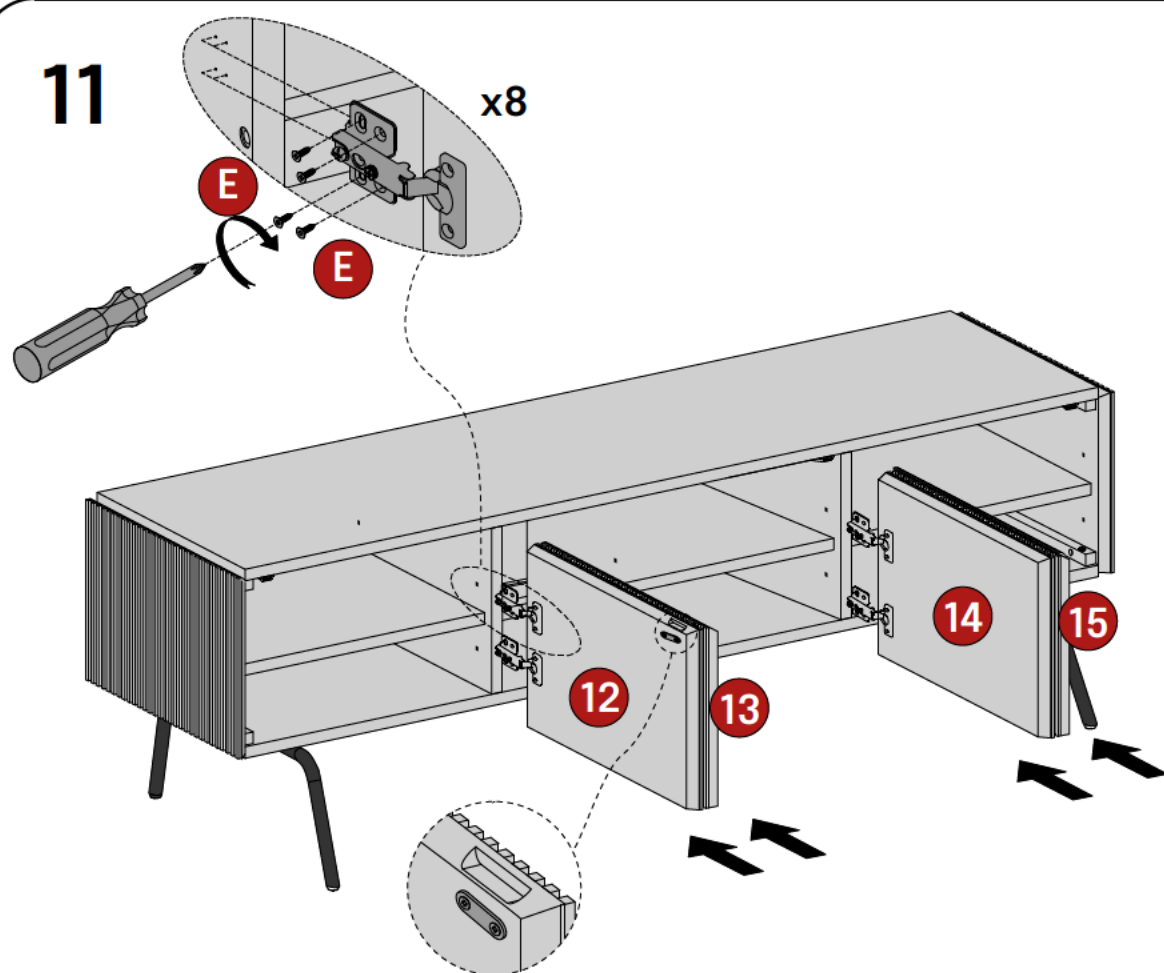
9



10

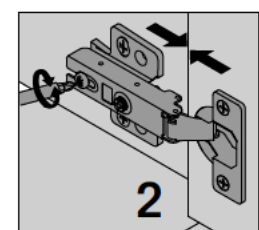
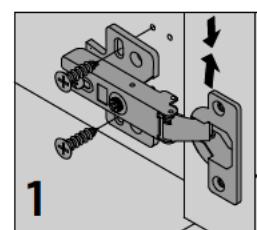


11



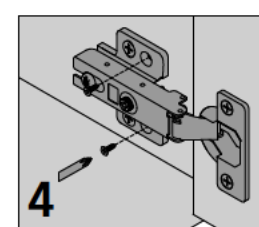
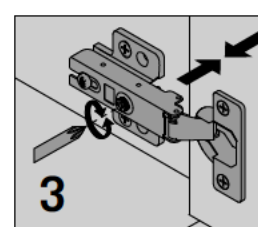
Regarding the installation and adjustment of the door hinge:

1. Use the "waist round hole" marked with a triangle to adjust the position of the door panel (ensure that the gap between the door panel and the upper and lower panels is consistent).
2. Use the screw at the back end of the hinge to adjust the front and back position of the door panel (ensure that the front of the door panel is in the same plane as the upper and lower panels).

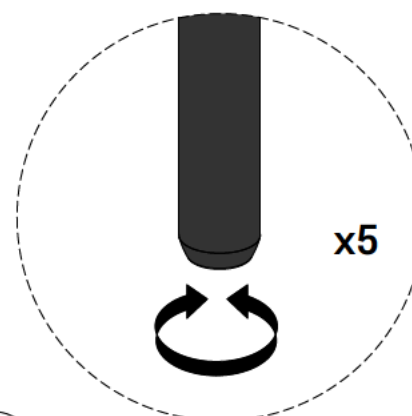
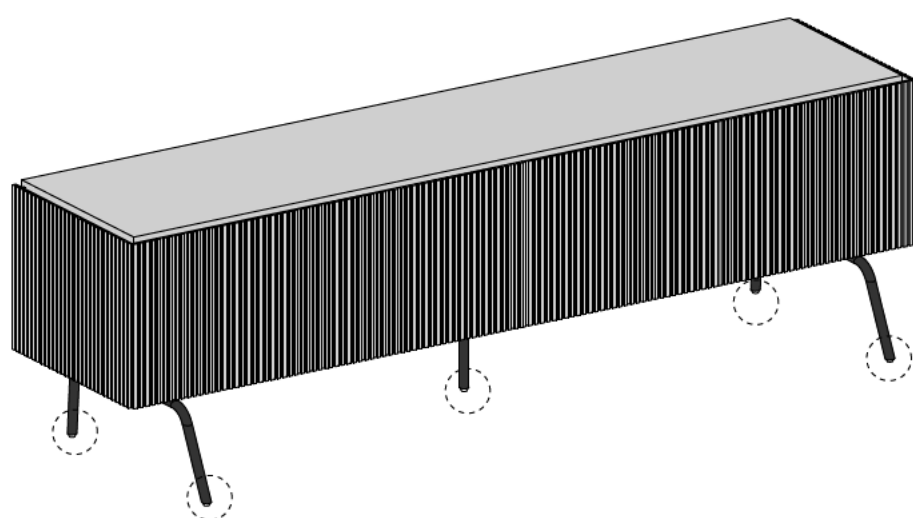


3. Use the screw at the front end of the hinge to adjust the left and right position of the door panel (ensure that the left and right sides of the door panel are in the same plane as the upper and lower panels).

4. After completing these three steps secure the other two screws on the hinge.



12



! Adjust leveler for balance.