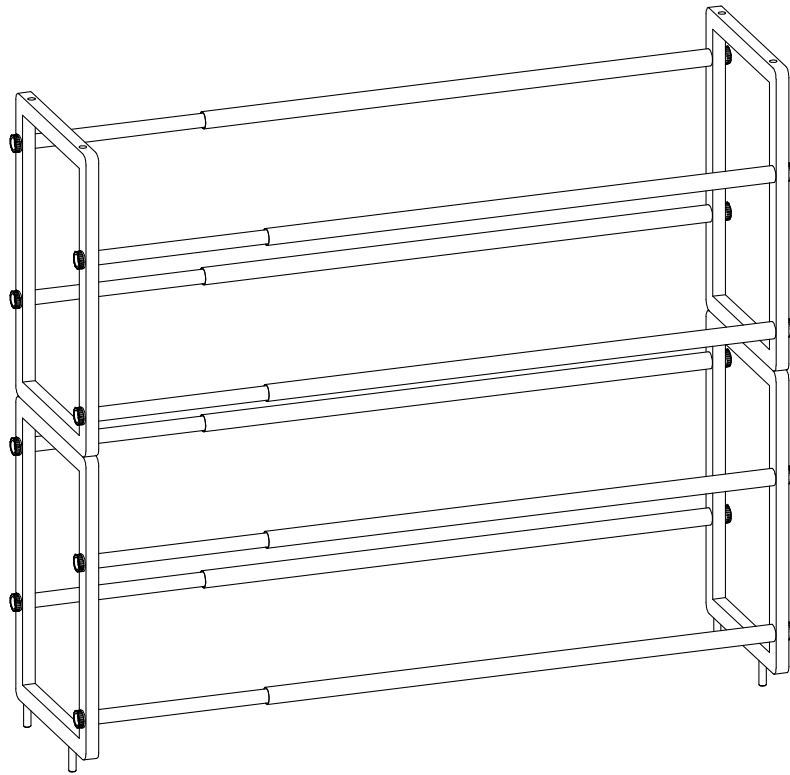


OWNER'S MANUAL



2-TIER 24" - 44" EXPANDABLE SHOE RACK (2-PACK)

PARTS LIST

Your 2-Tier 24"- 44" Expandable Shoe Rack (2-Pack) should include the following parts. Please inspect box contents to ensure you have received all components.

If you are missing any parts, need assistance with assembly or have questions, please contact Customer Service. Parts can also be requested online.

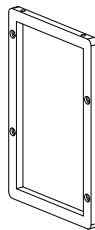
You will need no tools for assembly.

A



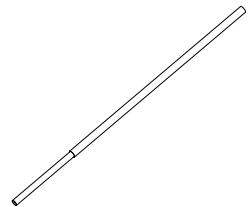
**LEFT SIDE
FRAME (2)**

B



**RIGHT SIDE
FRAME (2)**

C



**EXPANDABLE
ROD (8)**

D



**THUMB
SCREW (16)**

E

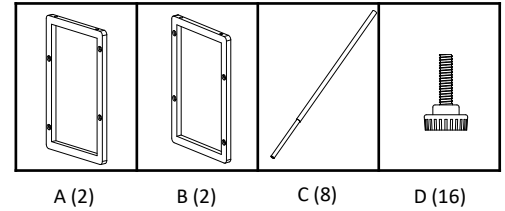


DOWEL (8)

ASSEMBLY INSTRUCTIONS

STEP 1

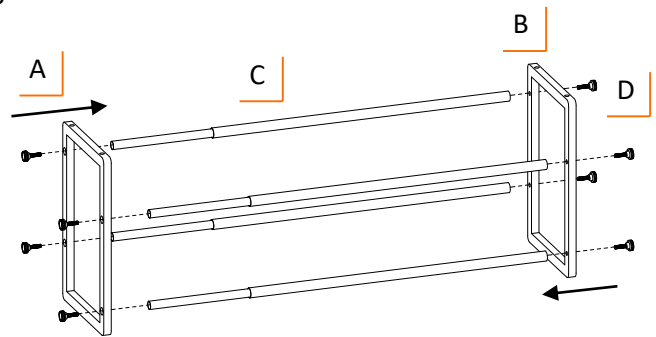
Make sure you have one LEFT SIDE FRAME (A) and one RIGHT SIDE FRAME (B). Take LEFT SIDE FRAME (A) and RIGHT SIDE FRAME (B) with logo facing out and right side up.



Connect large ends of EXPANDABLE RODS (C) to RIGHT SIDE FRAME (B) with THUMB SCREWS (D) through frame holes and screw into EXPANDABLE RODS (C). Connect small ends of EXPANDABLE RODS (C) to LEFT SIDE FRAME (A) with THUMB SCREWS (D).

Make sure THUMB SCREWS (D) are tightened clockwise.

Repeat step to assemble second shoe rack.

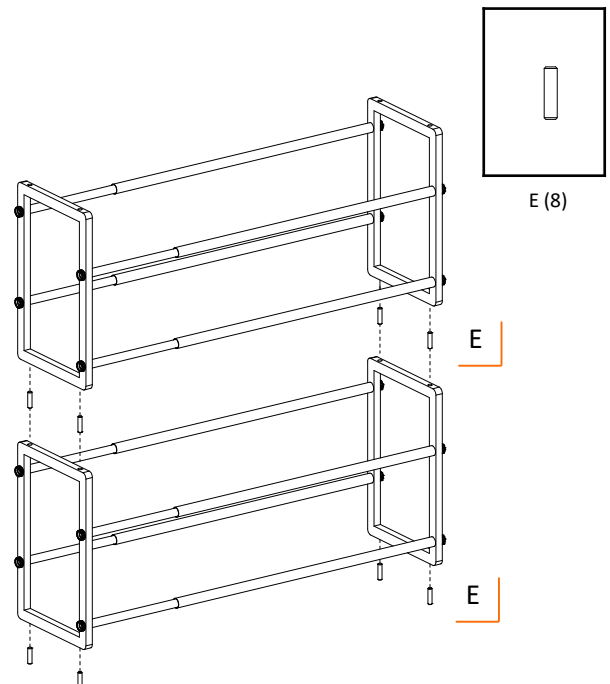


STEP 2

Place DOWELS (E) into the dowel holes of both shoe rack frame bottoms. Shoe racks can be placed side by side or stacked.

For stackable option, stack one shoe rack on the other shoe rack, make sure the DOWELS (E) are seated inside each hole.

When stacked, EXPANDABLE RODS (C) should be identically placed, small ends on top of small ends. Shoe racks can be expanded to desired width.



SERVICE PARTS LIST

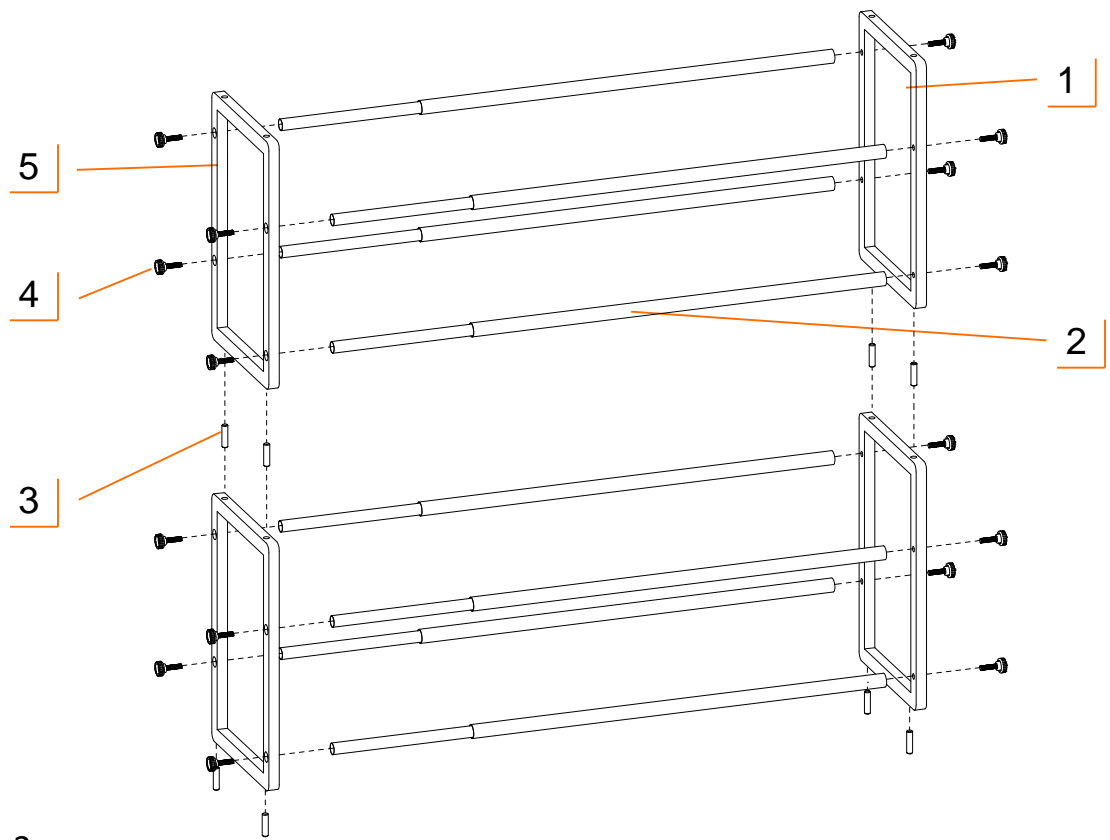
Our Customer Service provides the following replacement parts:

Bamboo Frames + Dark Bronze Rods

Description		Description	
1)	Right Side Frame	4)	Thumb Screw
2)	Expandable Rod	5)	Left Side Frame
3)	Dowel		

White Frames + Champagne Rods

Description		Description	
1)	Right Side Frame	4)	Thumb Screw
2)	Expandable Rod	5)	Left Side Frame
3)	Dowel		



WARNINGS

1. **Read and understand all instructions.** Failure to follow all instructions may result in injury and/or damage.
2. **The warnings, cautions, and instructions discussed in this manual cannot cover all possible conditions or situations that may occur.** The user must always be aware of their environment and ensure that they use the product in a safe and responsible manner.
3. **Do NOT modify the product in any way.** Unauthorized modification may impair the function and/or safety of the product, and may affect the life of the product.
4. **Check for damaged parts.** Before using this product, carefully check that all parts are in good condition, and that the product will operate properly and perform its intended function. Check for damaged parts and any other conditions that may affect the operation of this product. Replace damaged or worn parts, and never use this product with a damaged part.
5. **Do NOT overload the product.**

Weight capacity per tier – Poles not expanded (evenly distributed)	25 lb
Weight capacity per tier – Poles fully expanded (evenly distributed)	15 lb

6. **Do NOT allow children to climb or play around the product.**
7. **Remove shoes before moving shoe rack.**

CARE AND MAINTENANCE

- Avoid harsh, abrasive cleaners, and other corrosive chemicals.
- The product is designed for indoor use.

PRODUCT REGISTRATION

Thank you for purchasing a 2-Tier 24"- 44" Expandable Shoe Rack (2-Pack). In order to register your product and receive streamlined customer service, please fill out the following Product Registration Form.

First Name: _____ Last Name: _____

Address: _____

City: _____ State: _____ Zip Code: _____

Email Address: _____ Phone: _____

Product Model #: _____ Purchase Date: ____ / ____ / ____

Location of Purchase: _____

Please rate the importance of each feature (1=least important; 10=most important)

Quality ____ Price ____ Size/Capacity ____ Appearance ____ Other ____

How did you hear about our product?

- ☐ Magazine Ad ☐ Catalog ☐ Salesperson ☐ Word of Mouth
☐ Internet ☐ Store Display ☐ Other

Marital Status: ☐ Single ☐ Married

Household Income: ☐ Below \$50,000 ☐ \$50,000-\$150,000 ☐ \$150,000+

Education: ☐ High School ☐ College ☐ Graduate School

Primary Residence: ☐ Own ☐ Rent

Comments/Suggestions:



LIMITED WARRANTY

2-Tier 24" - 44" Expandable Shoe Rack (2-Pack)

LIMITATION OF REMEDIES AND LIABILITY

CONTACT US

**QUESTIONS? NEED PARTS?
WE ARE HERE TO HELP!**

Please feel free to contact us. There are no questions too small, or any problems too big. We're committed to providing our customers with the highest level of service.