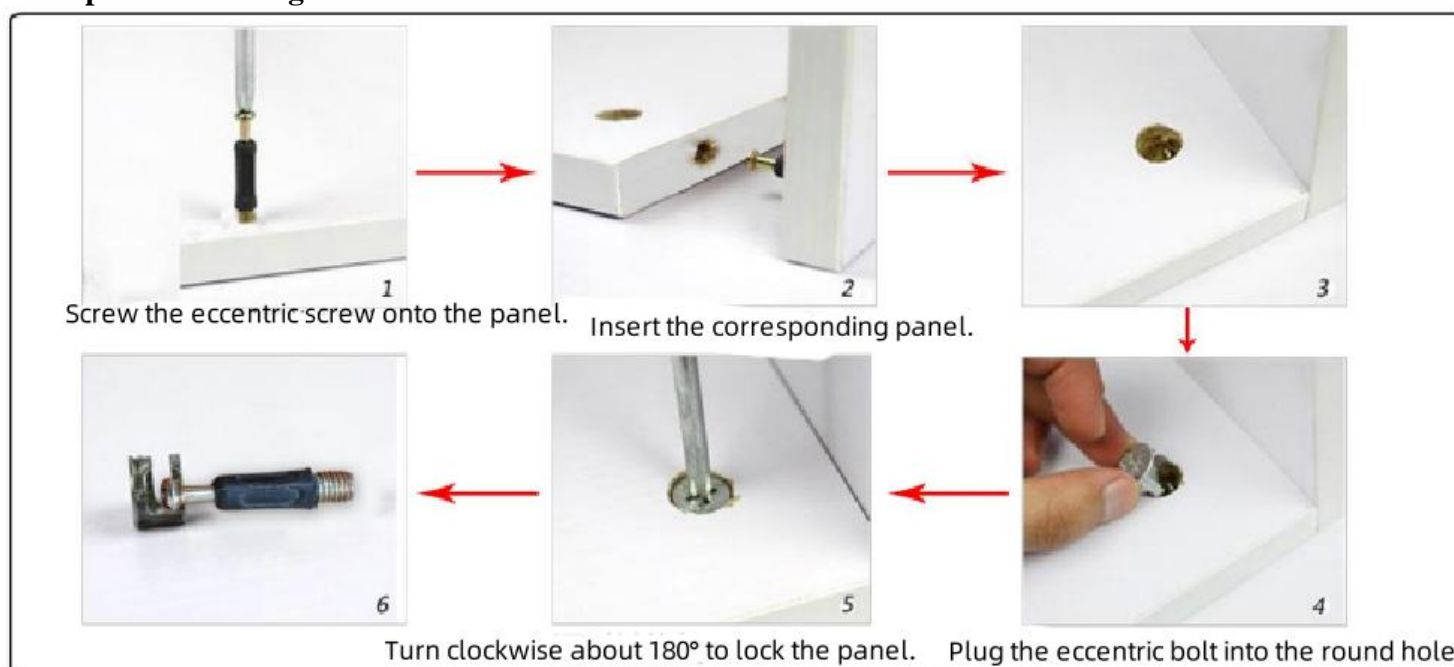


## Double Drawer Raised Model Installation Diagram

						
Eccentric Screws	Eccentric Bolts	3.5CM Pointed Screw	Metal Pins	Handle	Handle Screw	3CM Flat Head Screw
A*20	B*20	C*16	D*3	E*2	F*2	G*4

**Warm Tip: Tighten the screws to 70% during installation, and then tighten them again after the installation is complete!**

### Principle of Mounting Eccentrics:



### Installation Steps:

### Drawer Section Installation:

<1>



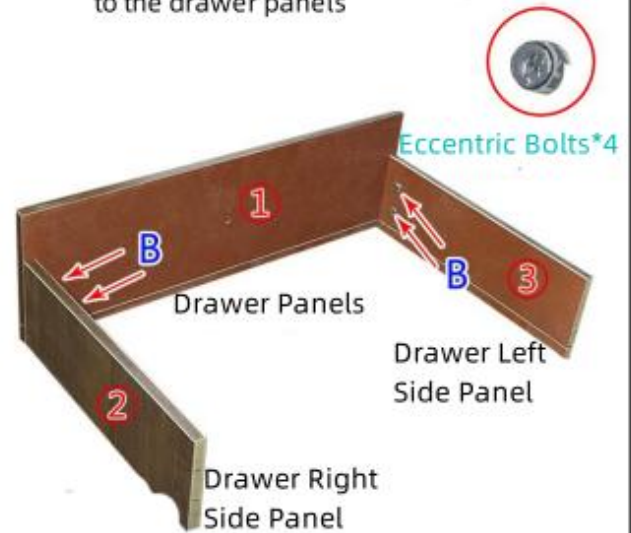
Drawer Right Side Panel

Drawer Bottom Panel

Drawer Left Side Panel

Drawer Back Panel

<2> Attach and secure drawer side panels to the drawer panels



Eccentric Bolts\*4

Drawer Panels

Drawer Left Side Panel

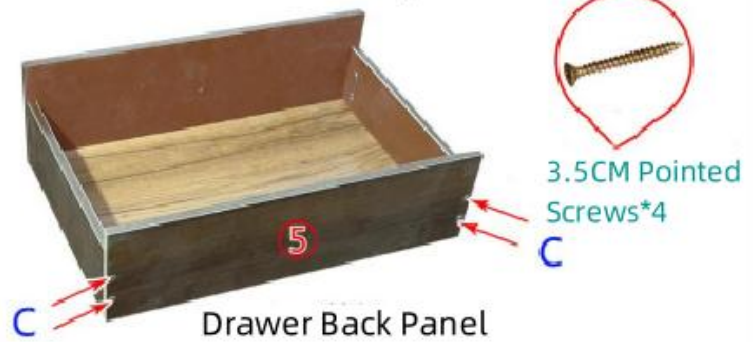
Drawer Right Side Panel

<3> Insert drawer bottom panel



Drawer Bottom Panel

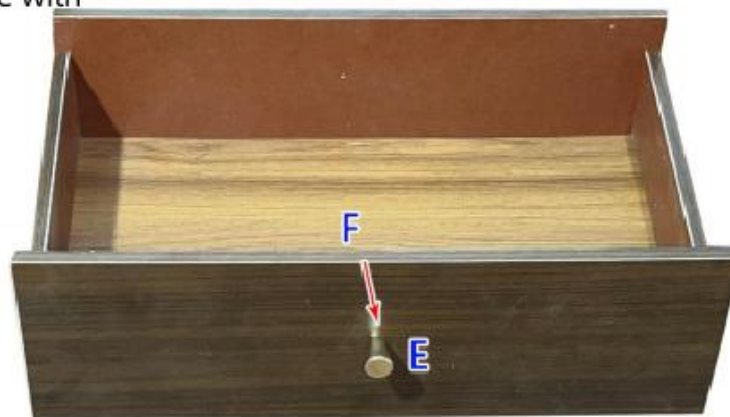
<4> Fixed drawer back panel



3.5CM Pointed Screws\*4

Drawer Back Panel

<5> Secure the handle with handle screw



Handle\*1



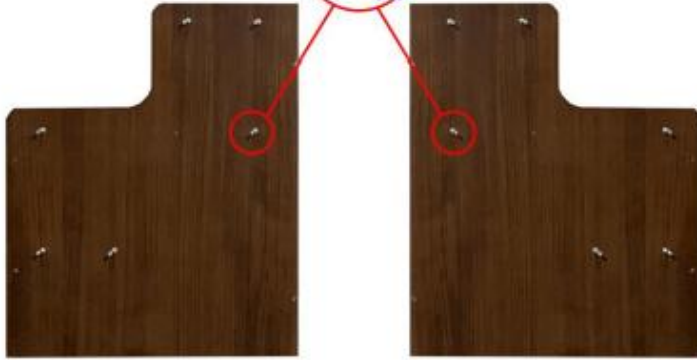
Handle Screw\*1

Install the other drawer section in the same way!

Panel name and serial number:



Upper panel is larger than small panel



Left Side Panel

Right Side Panel



Upper Panel



Large Panel

⑥

⑦

⑧

⑨



Small Panel

⑩



Back Panel

⑪



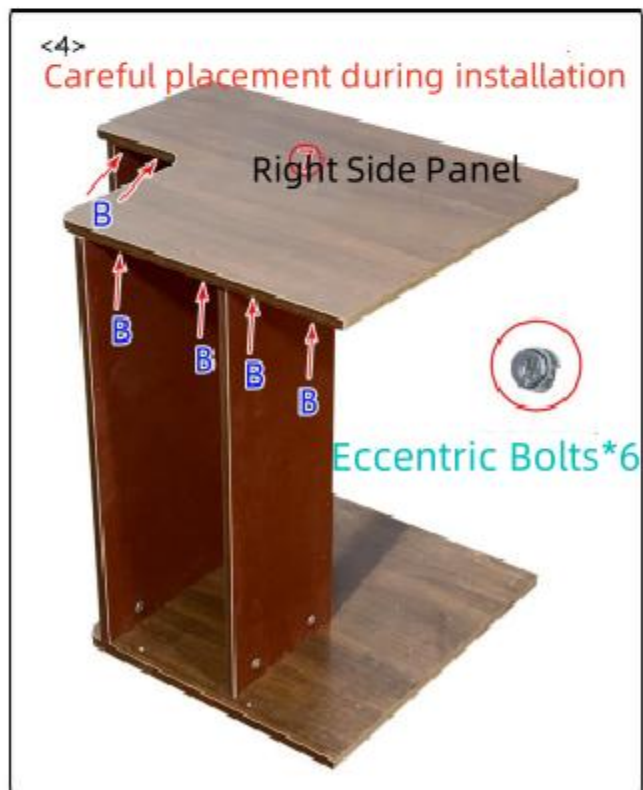
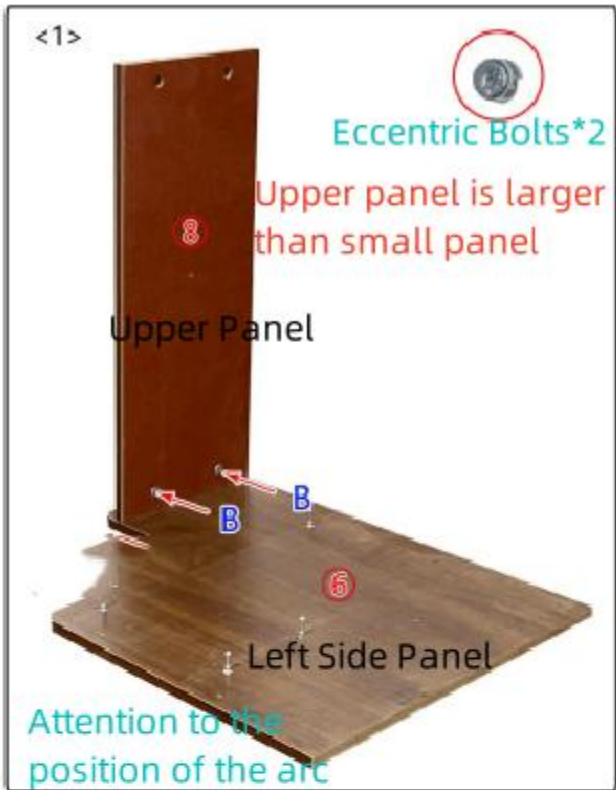
Cabinet Feet

⑫\*4



Baseboards

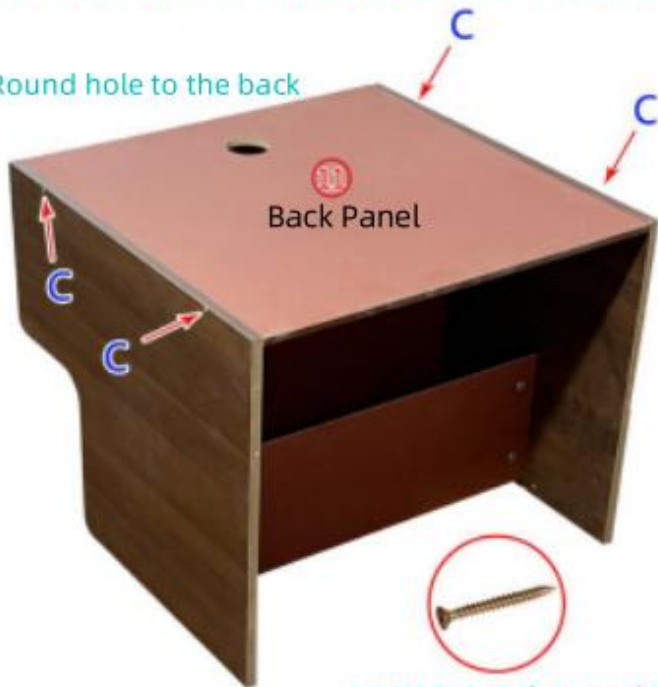
⑬



<5>  
The product is turned 90 degrees to the left as a whole.

Be careful to hold the back panel when installing!

Round hole to the back

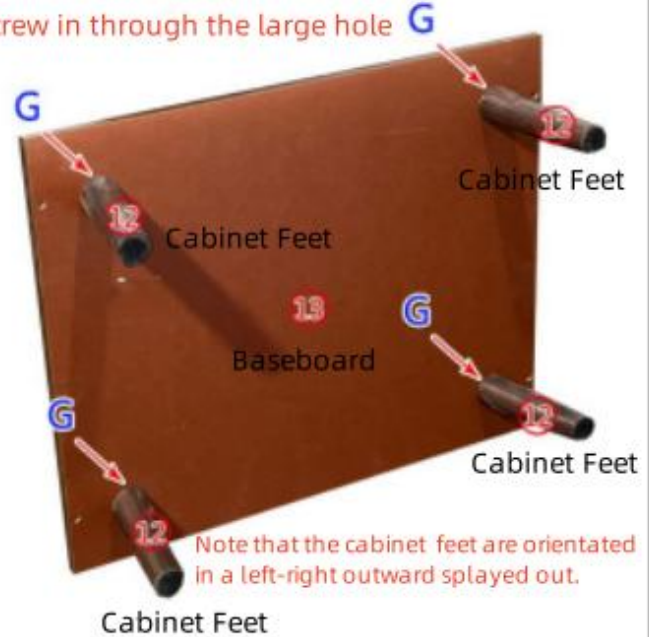


3.5CM Pointed Screws\*4

<6>



Screw in through the large hole G



Cabinet Feet

<7>  
Install the feet-mounted baseboard after aligning it with the cabinet section.



3.5CM Pointed Screws\*4

<8> Square the whole product up. Push it slowly into the drawer.

Insert the metal pin and push the drawer in at a 45 degree tilt.



Inserting the metal pin serves to prevent the drawer from falling out when it is pulled out.



Complete Picture!