

15 : 00

estimated
assembly time



2 or more

people required

Ok, let's
get started!



- Put on mood music!
- To prevent damage to product, use the clean side of package carton or rug as working surface.
- In the event of missing or damaged parts, delivery problems etc., please reach out to our team.
We will be happy to fix the problem!

care guide

- Clean regularly with a soft and dry cloth.
- To protect finish, avoid use of abrasive cleaners.
- Wipe up spills immediately. Please!

ⓘ **While assembling the product, tighten the bolts up to 50%. Once all parts are in place, only then fully tighten the bolts.**



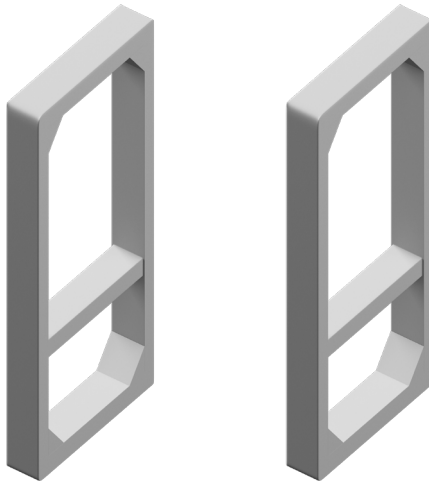
product parts



A1
Tabletop
x1



A2
Bottom Table
x1

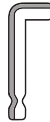


B
Table Legs
x2

what's included



(C) - Bolt
(6 x 30mm)
x8



(D) - Allen Key
x1



(E) - Flat Washer
(8 x 16mm)
x8



(F) - Lock Washer
(8 x 16mm)
x8

assembly instructions

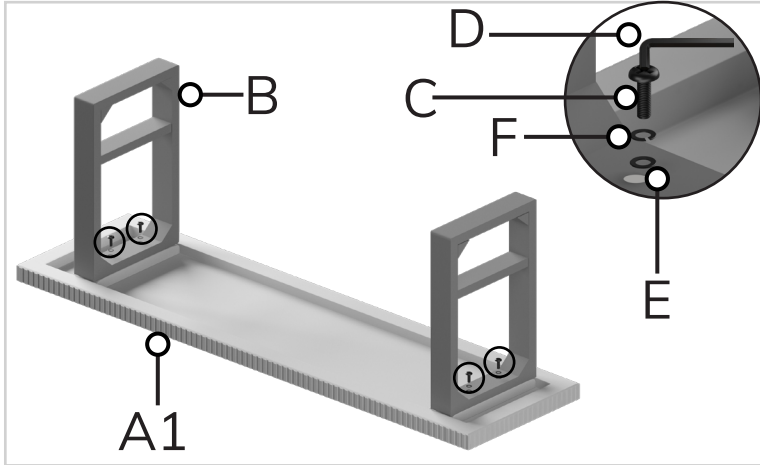
Friendly Tip: Take a deep breath going in. This may be a tricky part, but nothing too overwhelming. Just follow these steps to the T and the outcome will be worth it!



- ⓘ While assembling the product, tighten the bolts up to 50%. Once all parts are in place, only then fully tighten the bolts.

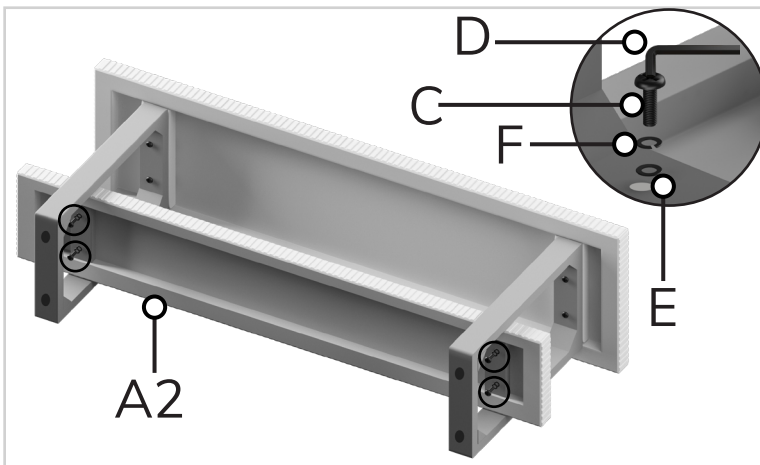
step 1:

Start by placing the tabletop (A1) upside down. Now, taking this image as reference, align the table legs (B) with the slots given on the tabletop and secure them in place using flat washer (E), lock washer (F), and bolt (C). Tighten the points up to 50% with allen key (D).



step 2:

Next, place the bottom table (A2) over the slots given at the bottom of the legs (B) and secure it in place using flat washer (E), lock washer (F), and bolt (C). Tighten all points fully using allen key (D). **If required, adjust the leveller according to the floor.**



Voila! Your table is now assembled and secure!

you've
got
a home
with us

