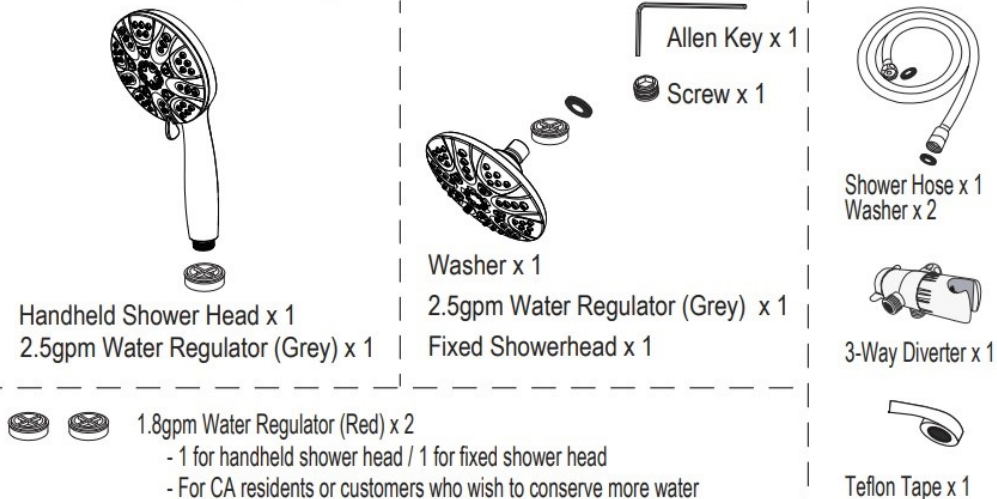
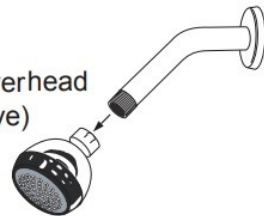


What's in the package.

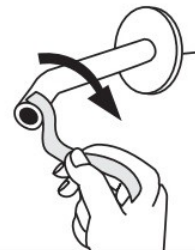


① Remove old showerhead.

Old Showerhead
(Remove)



② Wrap Teflon tape clockwise a few rounds to cover the showerarm threads.

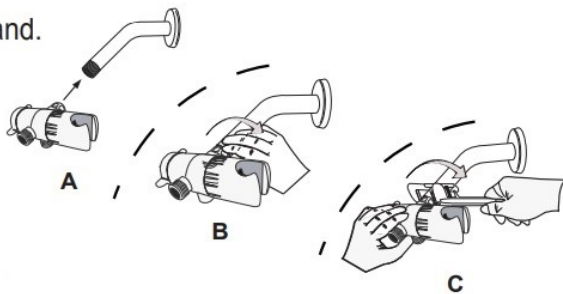


③ Attach 3-way diverter to the shower arm by rotating hex nut clockwise by hand.

Cover the hex nut with a cloth to avoid scratch.

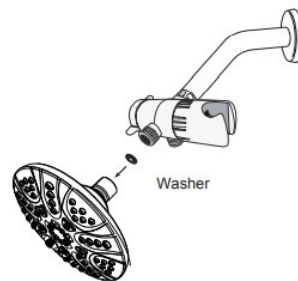
Lightly snug the hex nut with a wrench to make sure

1. Hex nut is fully tightened.
2. 3-way diverter is firmly connected to the shower arm.



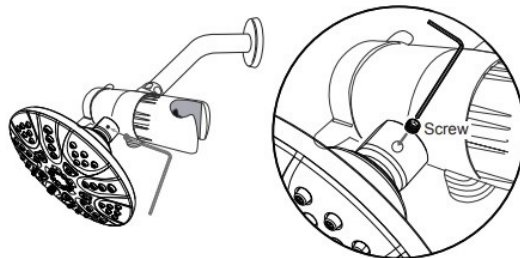
④ Ensure a washer is in the ball joint of the fixed showerhead.

Attach the fixed showerhead to the 3-way diverter by turning clockwise.



⑤ Ensure the fixed showerhead is tightened to the diverter.

Put the screw into the hole located on the ball joint, then fasten it tightly with the Allen key.



⑥ Ensure a washer is in each of the hose nut.

Connect -
HEX NUT to the DIVERTER and
CONICAL NUT to the HANDHELD SHOWER HEAD.

