

## Unit Information

60Hz – 120 volts – 1800 Watts

3 lb. food capacity total of  
2 baskets.

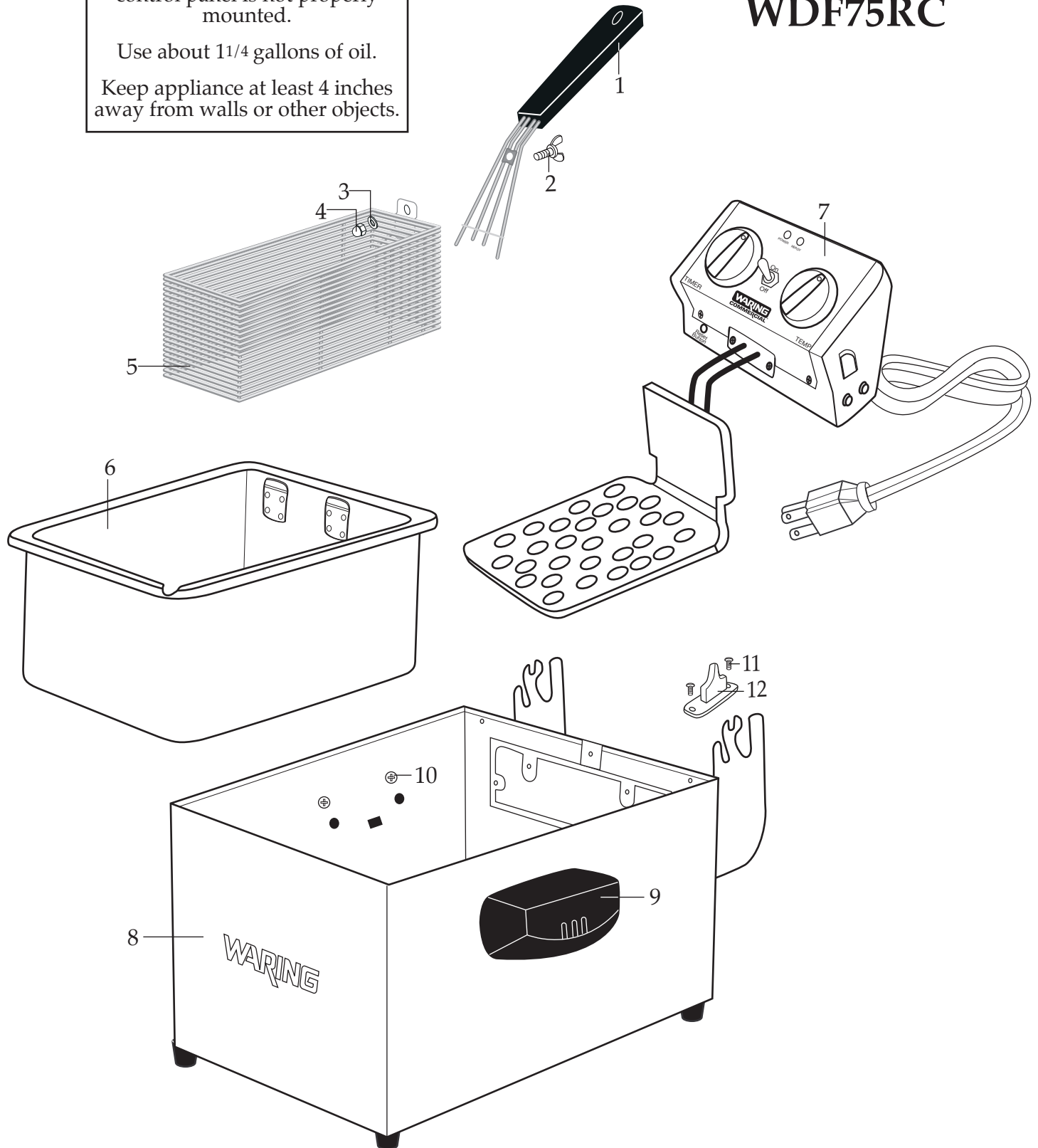
The unit will not work if the  
control panel is not properly  
mounted.

Use about 1 $\frac{1}{4}$  gallons of oil.

Keep appliance at least 4 inches  
away from walls or other objects.

# WARING COMMERCIAL®

## 8.5 Lb. Commercial Deep Fryer WDF75RC

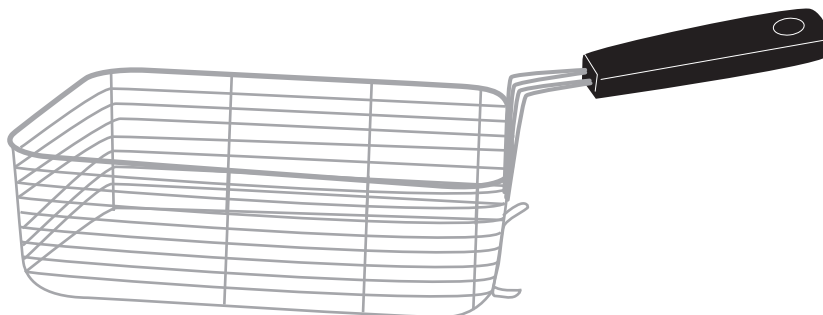


## Catalog/Model

WDF75RC

**Waring Factory Service Center**  
314 Ella T. Grasso Ave.  
Torrington, CT 06790  
Tele. 1-800-269-6640  
Fax 860-496-9017  
[www.waringcommercialproducts.com](http://www.waringcommercialproducts.com)

Illustration#	Part#	Description
1	033716	Basket Handle (1 per basket)
2	030305	Wing Nut Screw (1 per handle)
3	030303	Washer (1 per handle)
4	030304	Cap Nut (1 per handle)
5	033715	Small Basket-ONLY (2 Required)
6	028576	Oil Container
7	503121	Heating Element comes with heat diffuser and heater stand
8	503122	Body Assembly comes with handles and feet
9	028578	Body Handle (2 Required)
10	028577	Screw (4 Required 2 per handle)
11	030439	Screw (2 Required)
12	030438	Safety Switch Acuator



**032603**

Large Frying Basket (LFB75)

*optional*

**No Longer Available**