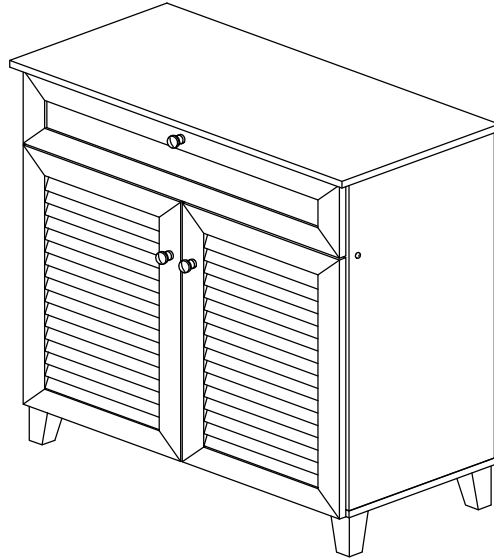
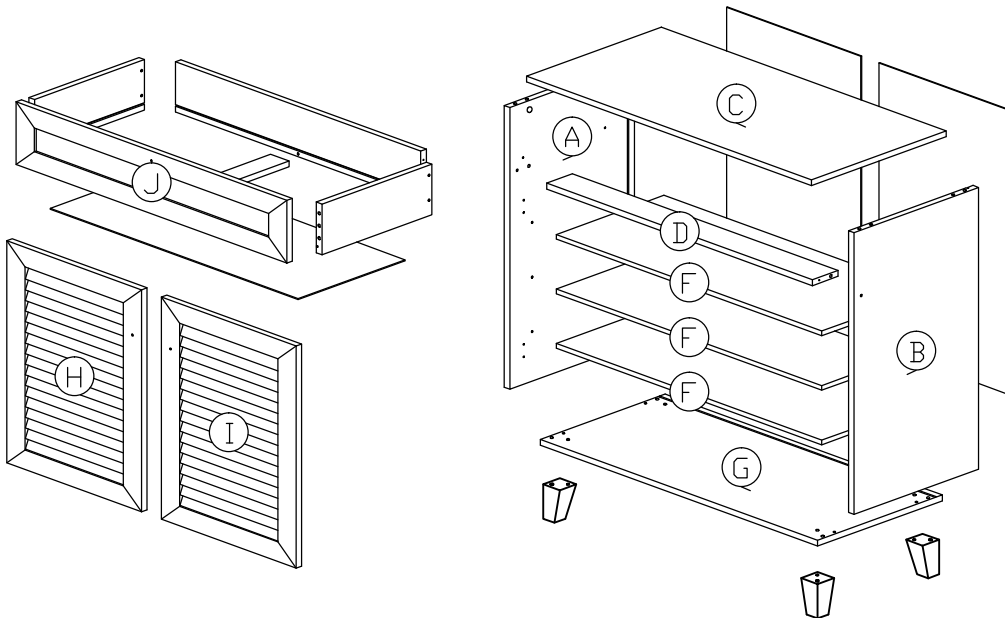


Assembly Instruction




Part List



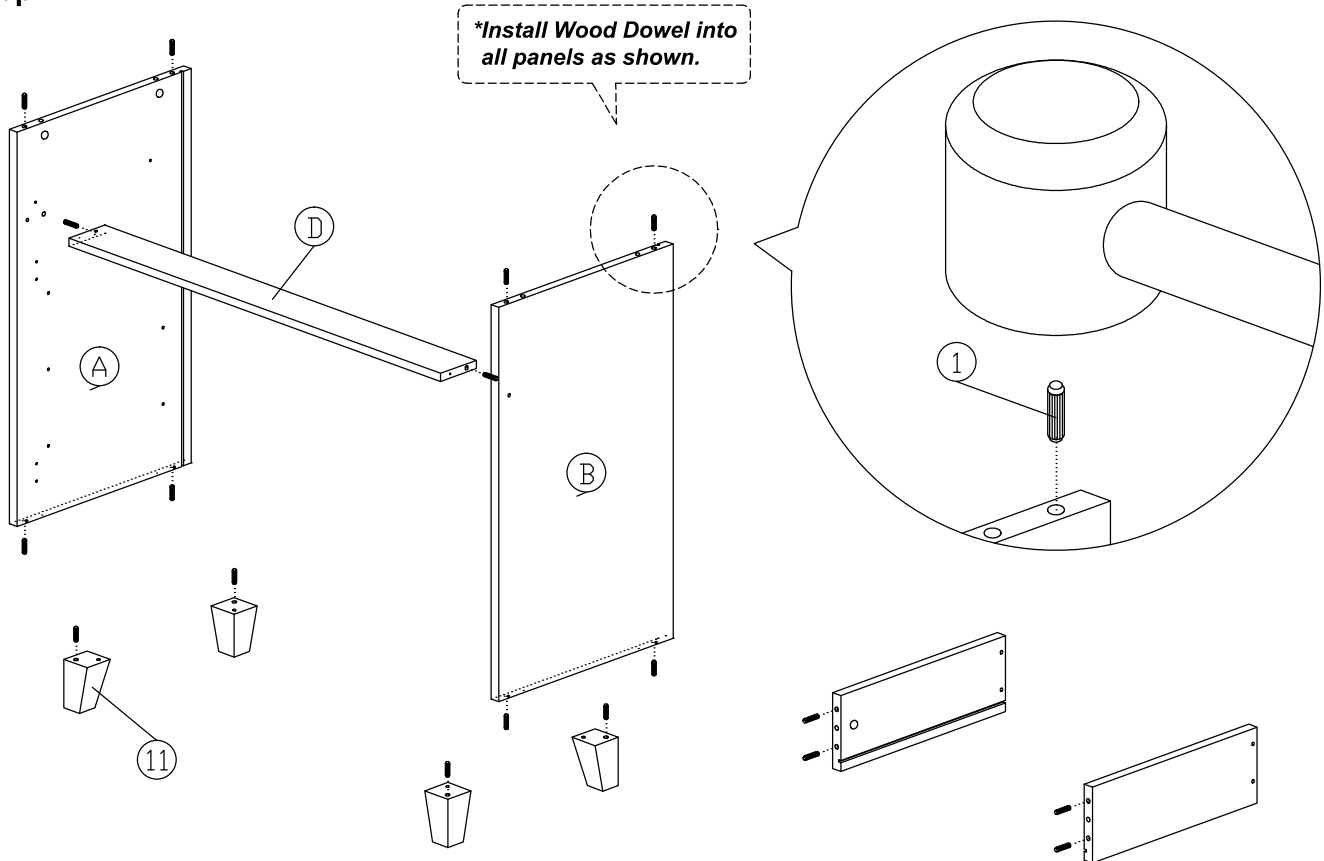
Hardware List

No.	SHAPE	DESCRIPTION	Qty.
1		8x25mm Wood Dowel	18Pcs
2		15MM Titus Mini Fix	7Sets
3		M5x8mm Screw (Euro Screw)	4Pcs
4		TP 10#x1/2" Screw	16Pcs
5		M3.5x15mm Screw	4Pcs
6		M3x16mm Screw	4Pcs
7		M4x38mm Screw	11Pcs
8		M7x40mm Screw	4Pcs
9		Shelf Support	12Pcs

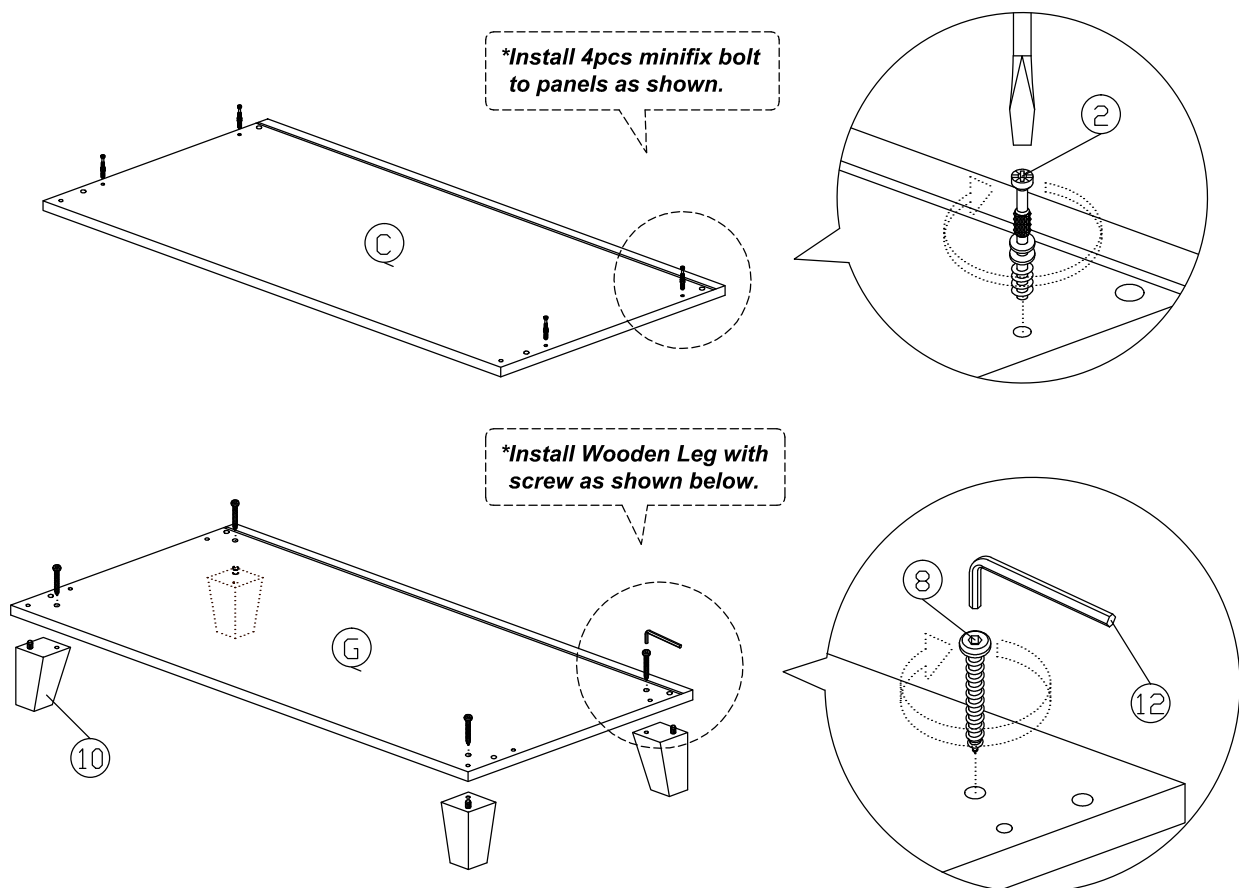
10		Handle (9988) M4x25mm (Handle Screw)	3Sets
11		Wooden Leg	4Pcs
12		L Key	1Pc
13		Z Bracket	2Pcs
14		Hinges (F012)	4Sets
15		Drawer Slide = 300mm	1Set
16		15mm Minifix Cap	2Pcs
17		Screw Cap	2Pcs

Assembly Instruction

Step 1

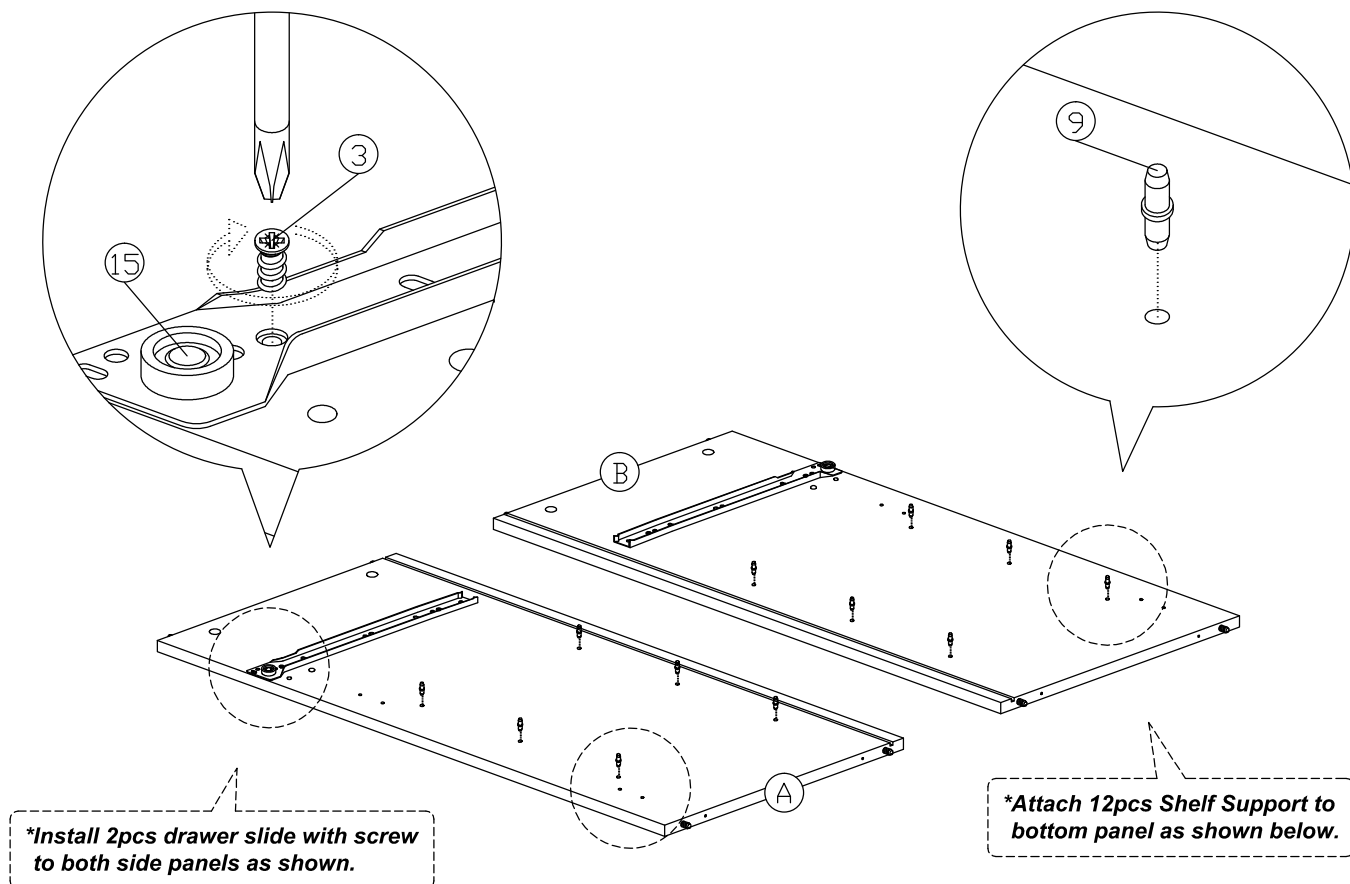


Step 2

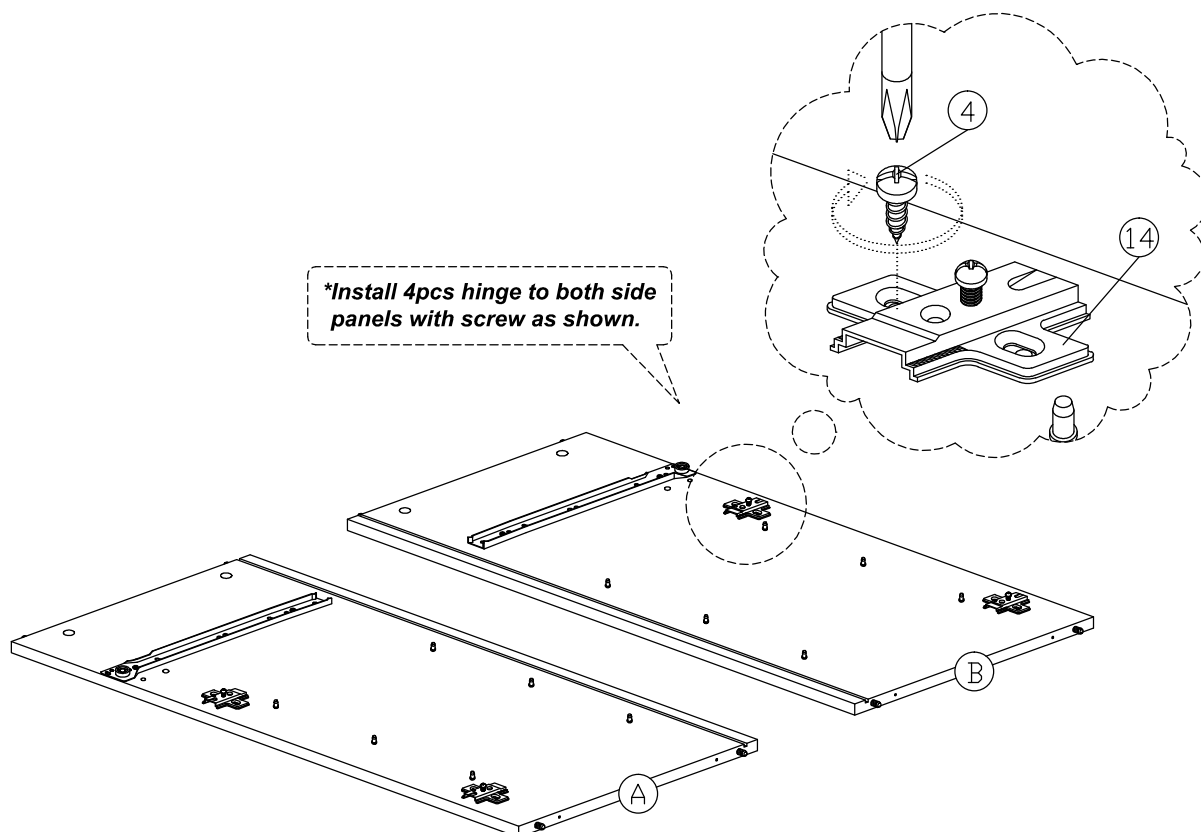


Assembly Instruction

Step 3

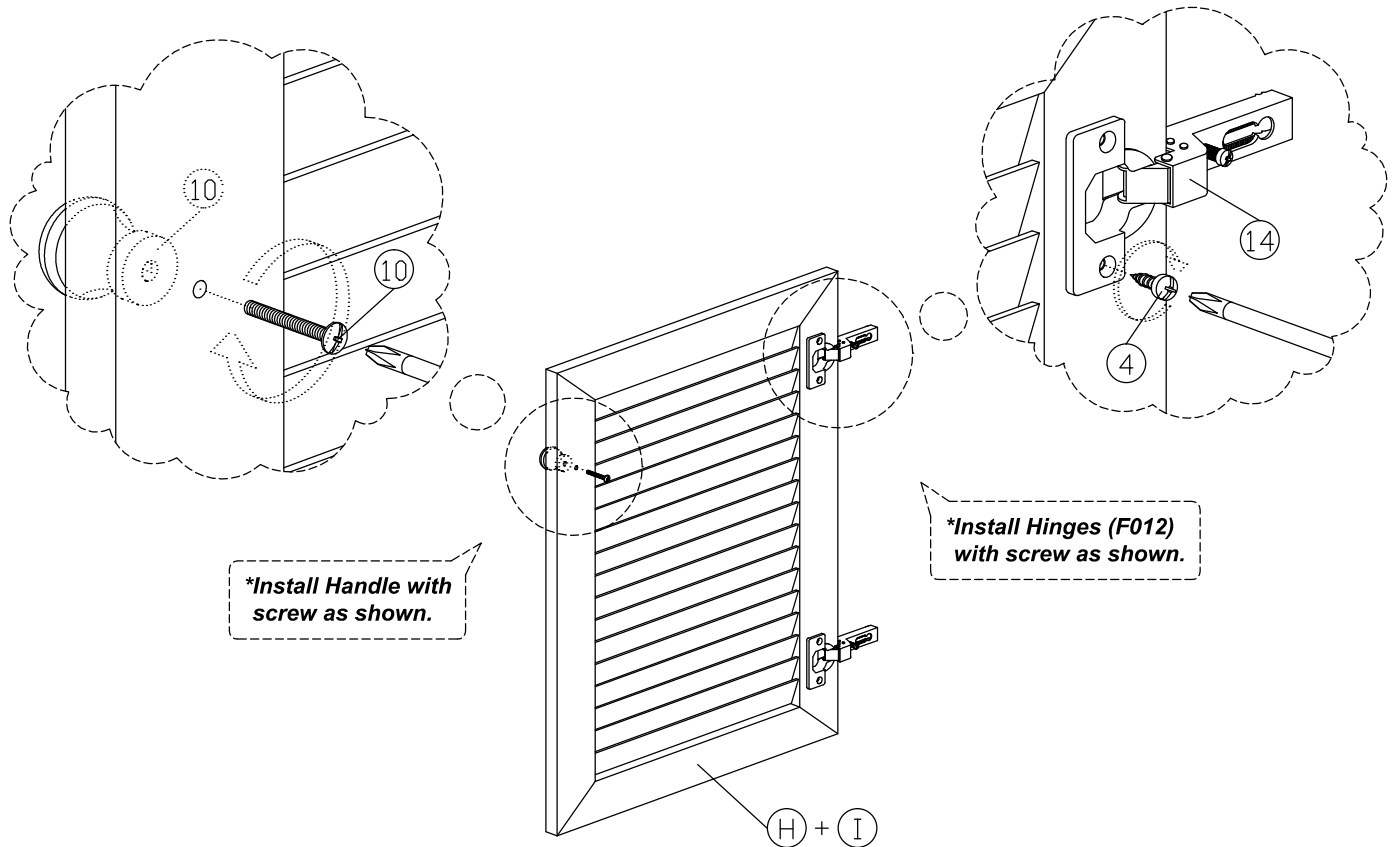


Step 4

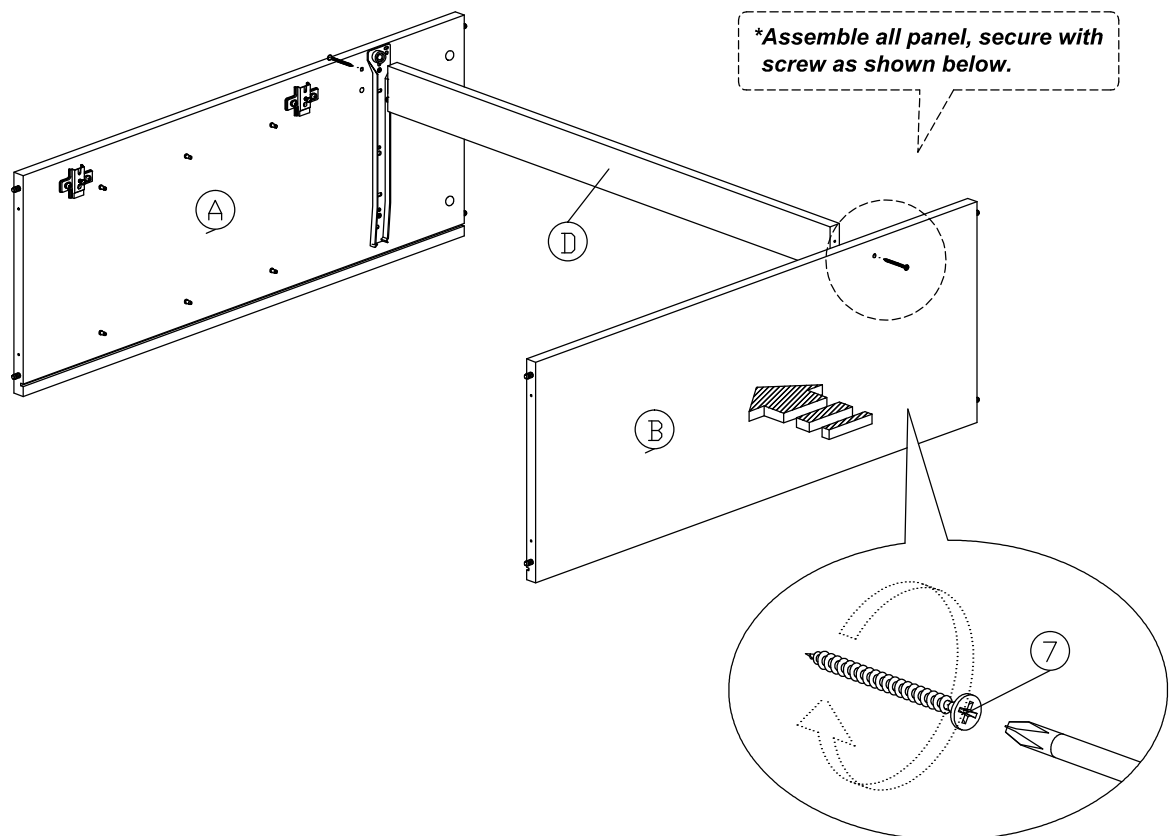


Assembly Instruction

Step 5

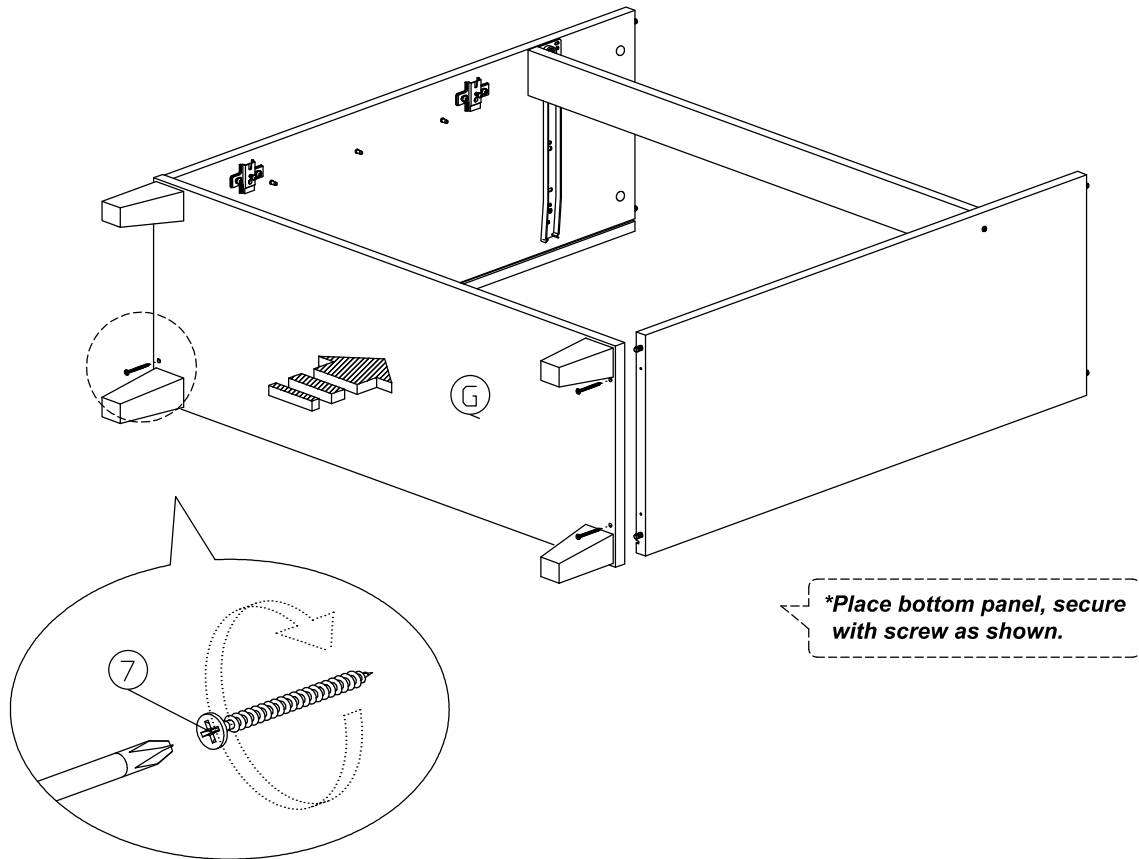


Step 6

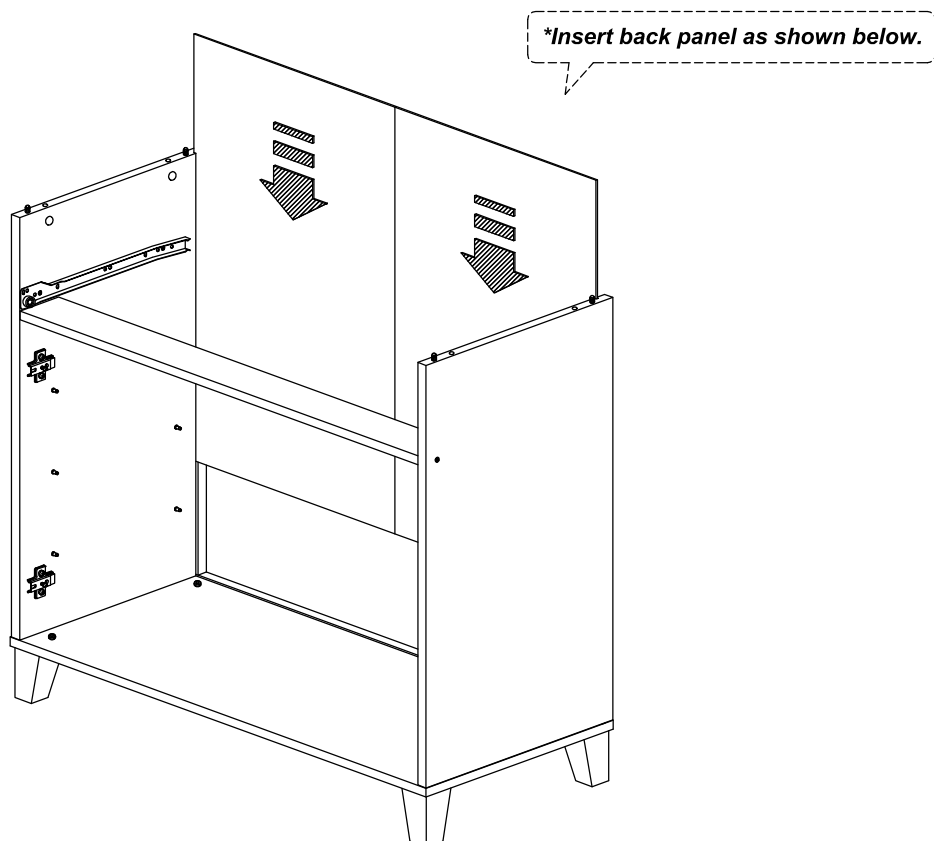


Assembly Instruction

Step 7

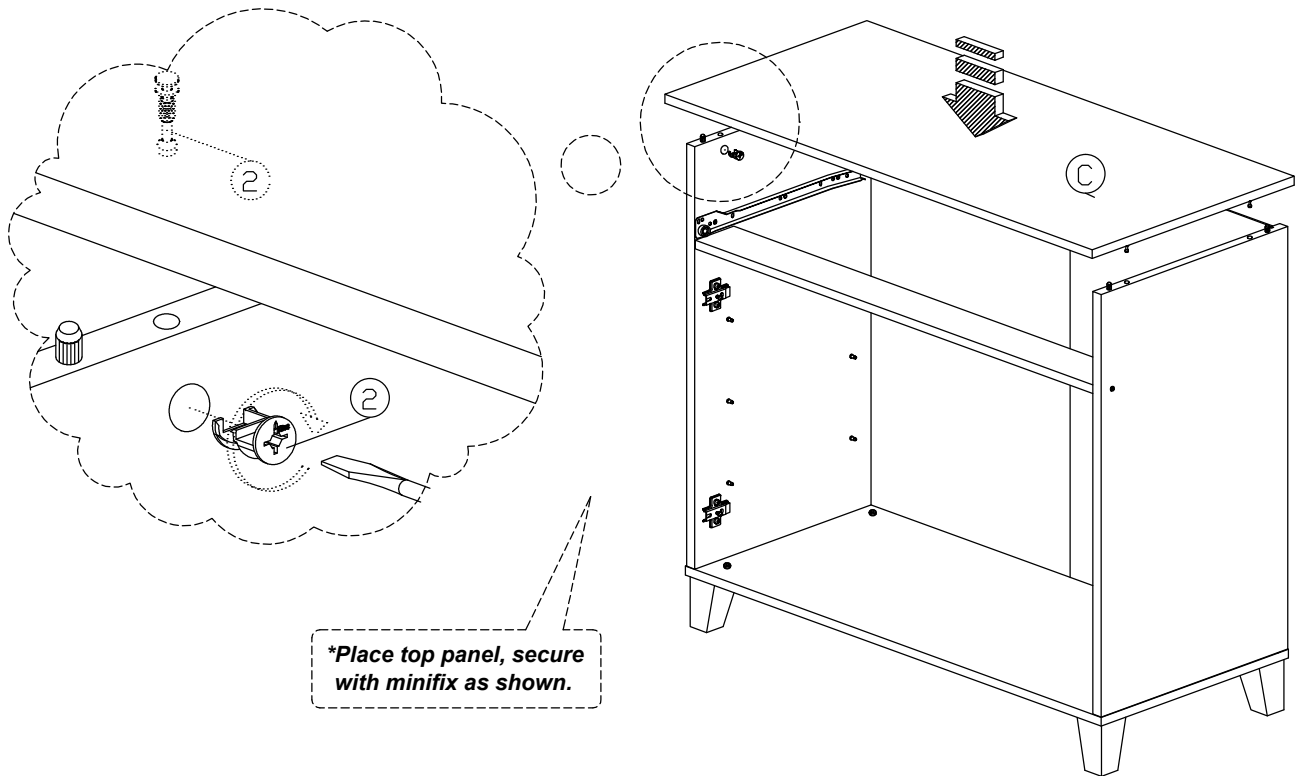


Step 8

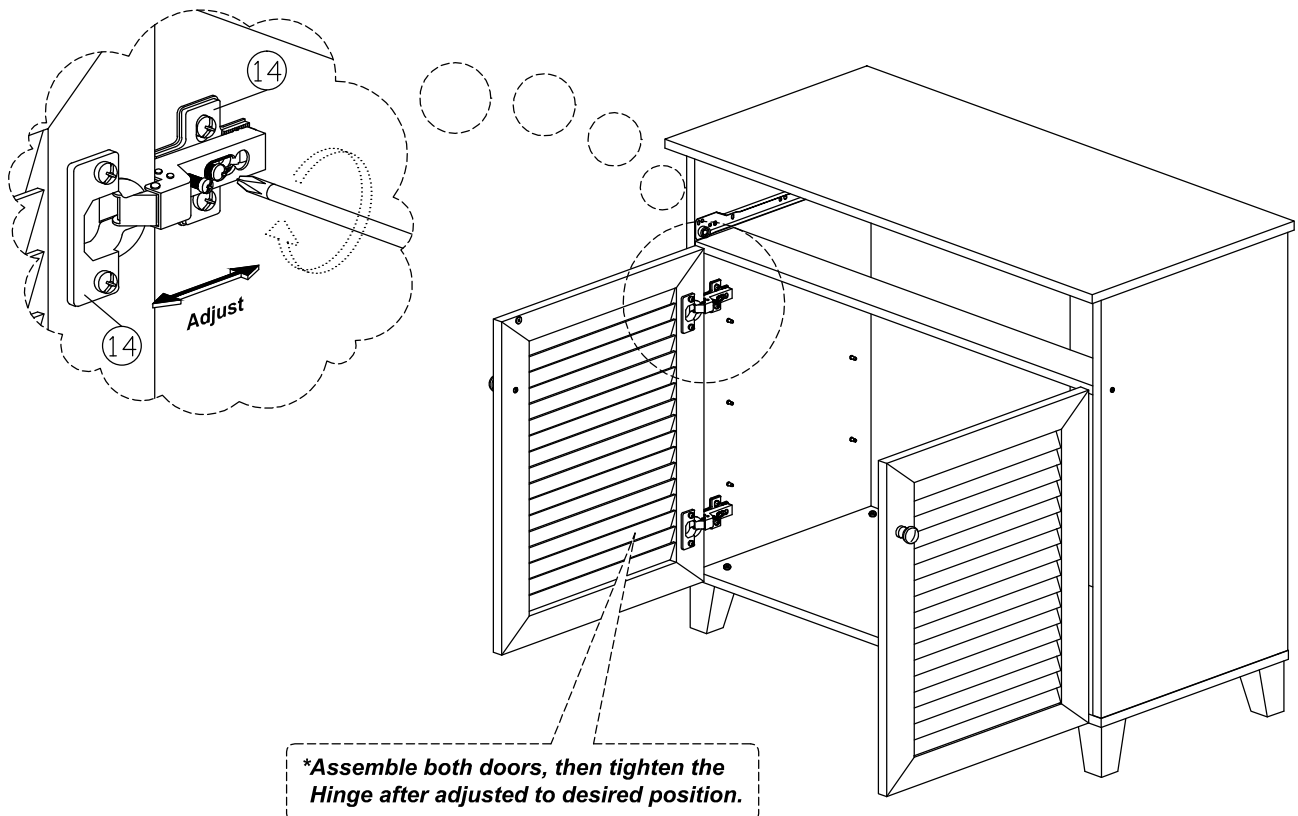


Assembly Instruction

Step 9

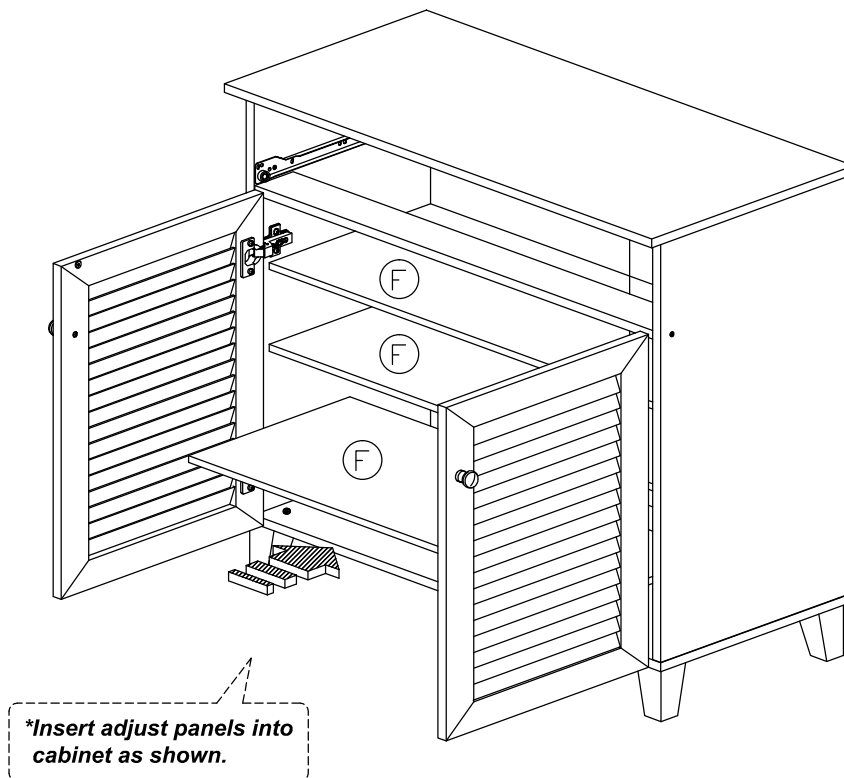


Step 10



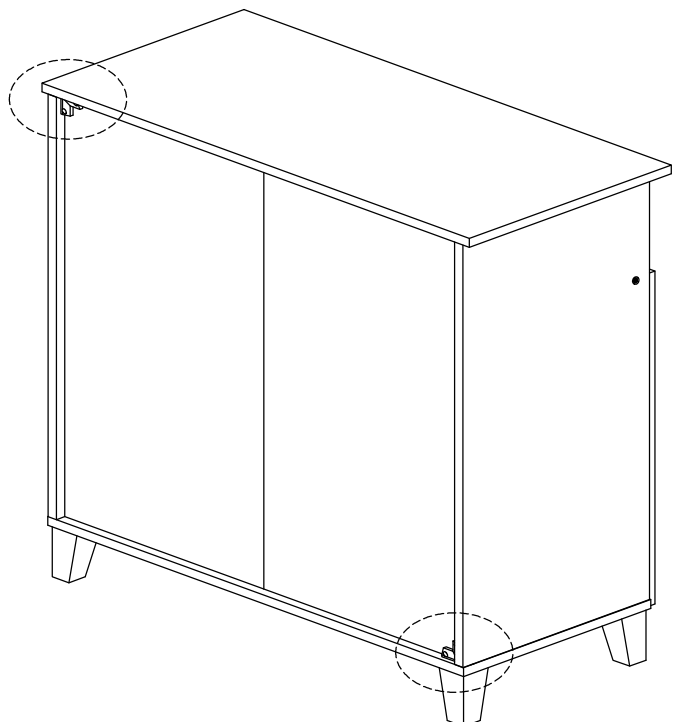
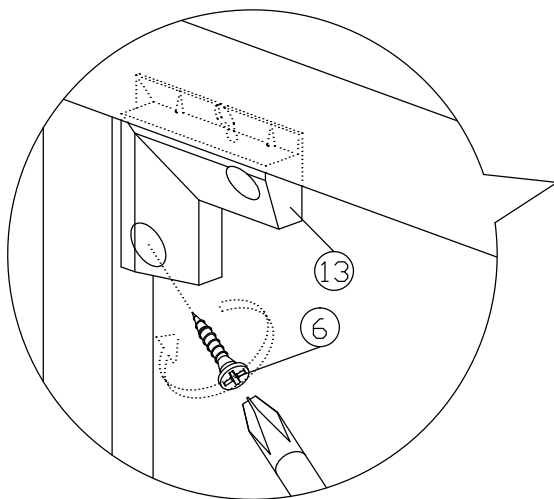
Assembly Instruction

Step 11



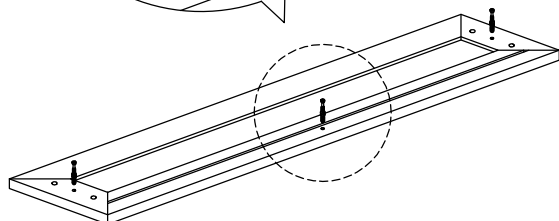
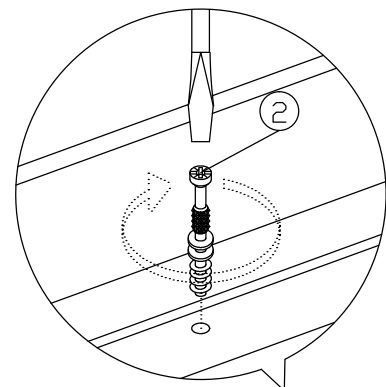
Step 12

*Install Z Bracket with screw as shown.



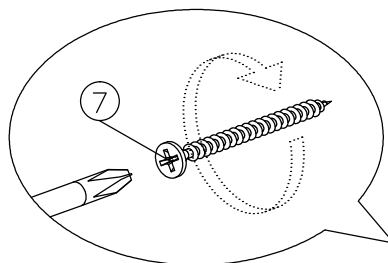
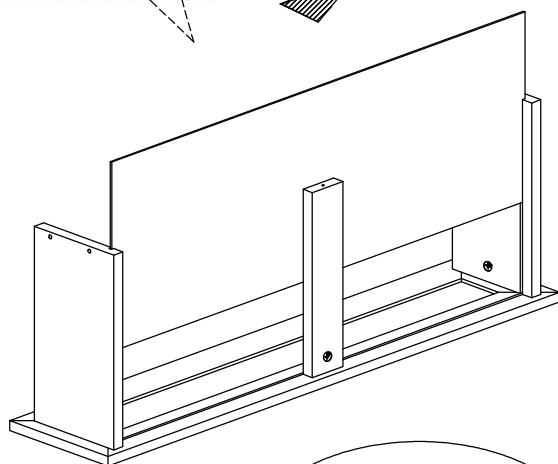
Assembly Instruction

Step 13



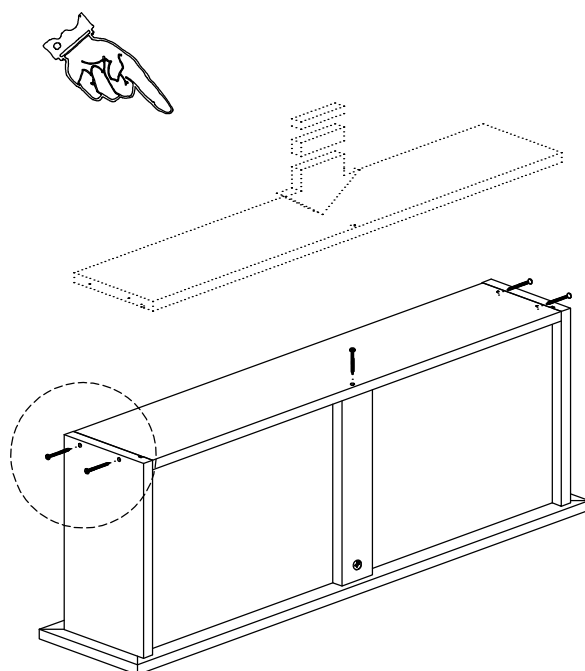
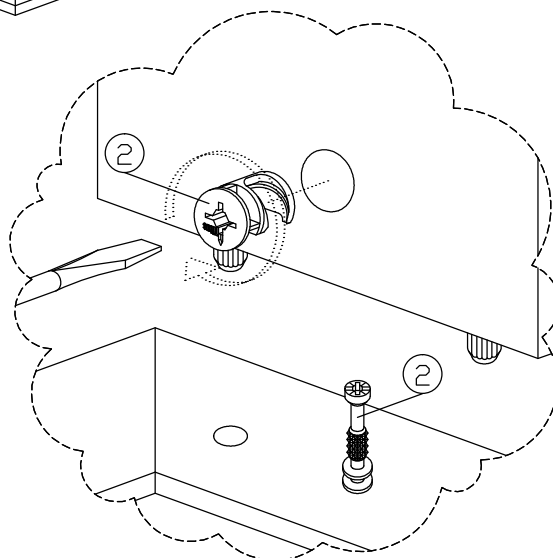
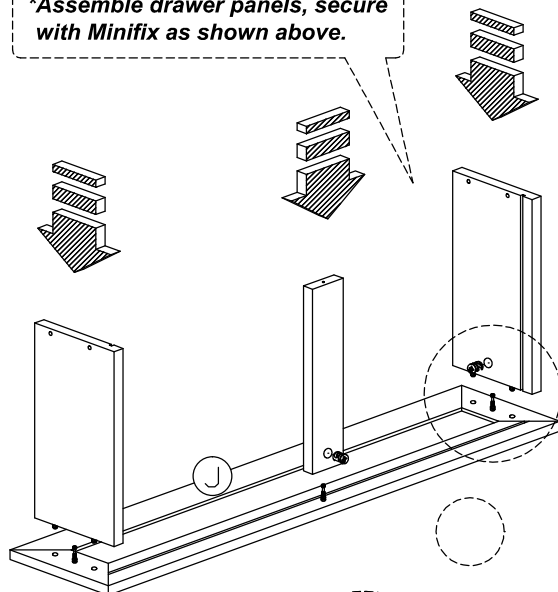
**Install 3pcs minifix bolt to panels as shown.*

**Insert drawer bottom as shown below.*



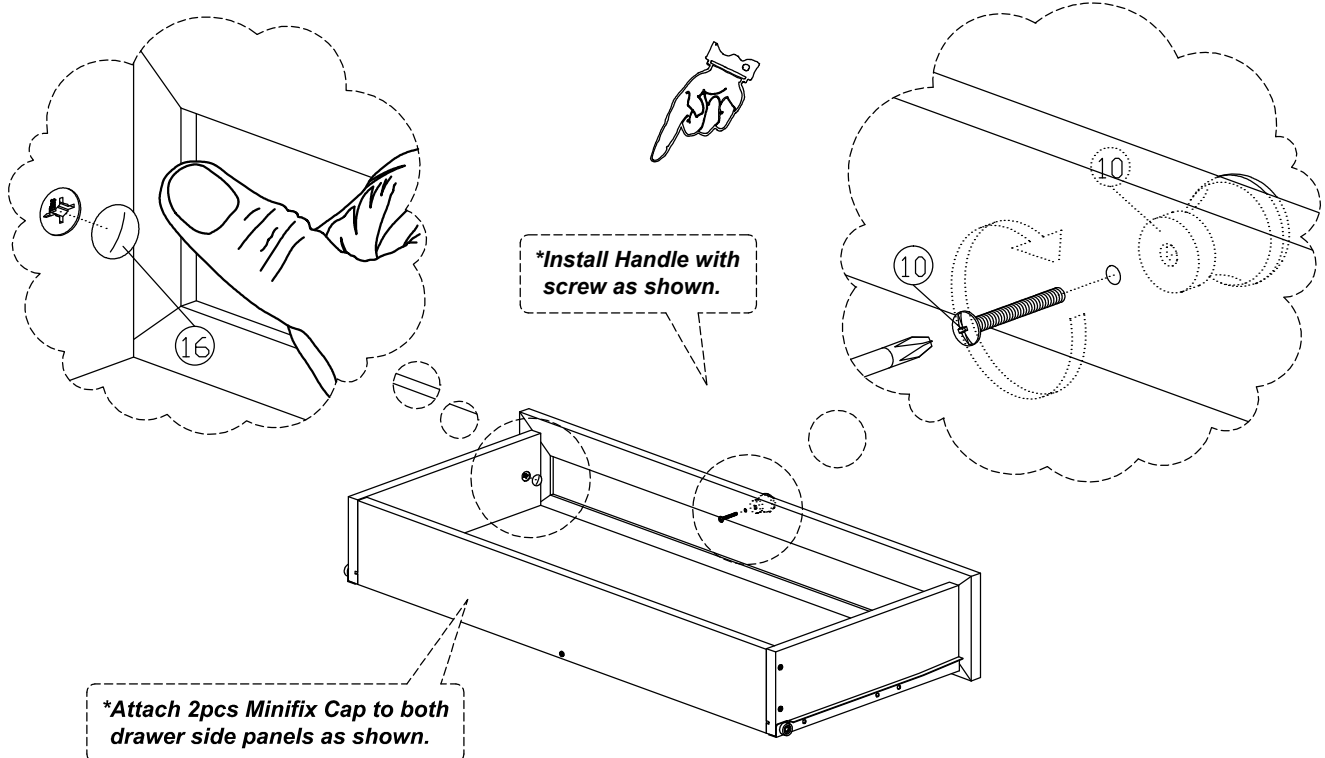
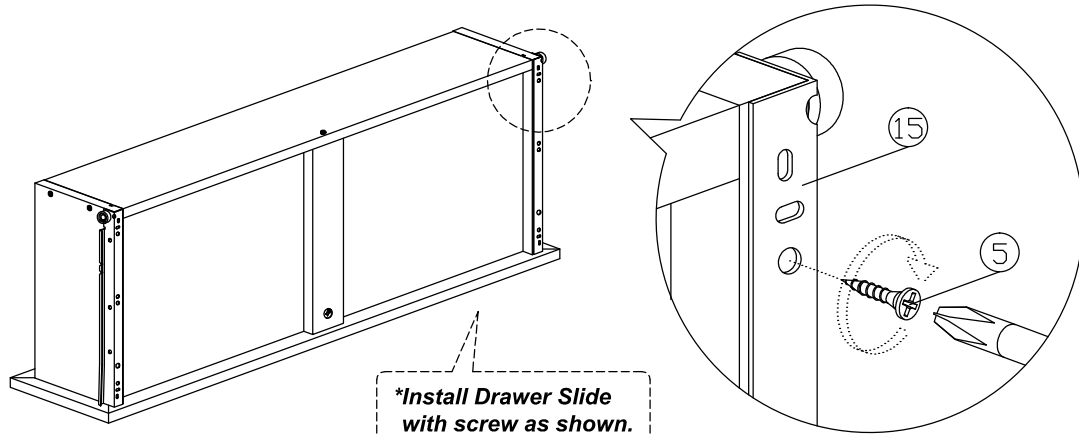
**Insert drawer back, secure with screw as shown.*

**Assemble drawer panels, secure with Minifix as shown above.*



Assembly Instruction

Step 14



Step 15

