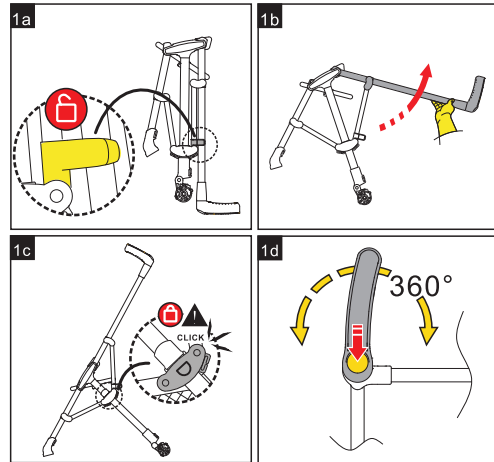


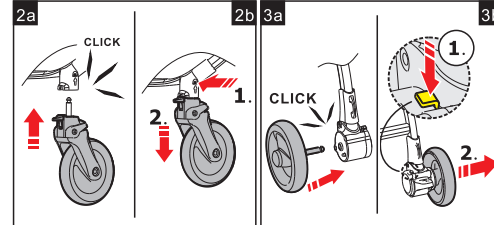
Pet Stroller Assembling



1: Open the frame

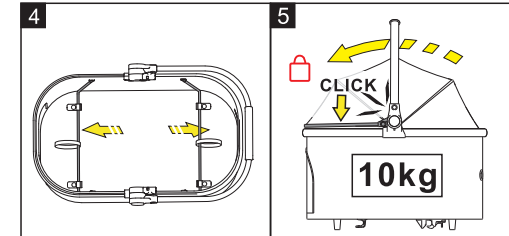
1a: Unlock the hook,
1b: As shown in the figure, press the car with one hand and pull the handle tube in the direction indicated by the arrow with the other hand,
1c: It is OK when hear a sound of click,
1d: After pressing the push button, it can rotate and adjust 360 degrees.

Pet Stroller Assembling



2a: Install the front wheel
Insert the wheel axle wheel seat inside, hear the rattling sound installed,
2b: Disassemble the front wheel
Press the seat rod button down, pulled out
3a: Installation the rear wheel
Insert the wheel axle wheel seat inside, hear the rattling sound installed,
3b: Rear wheel disassembly
Press the seat rod button down, pulled out

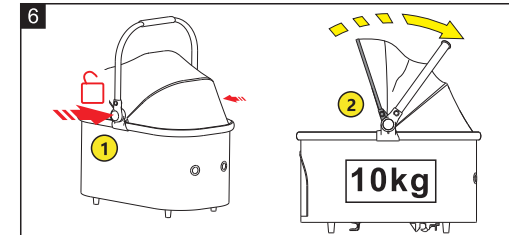
Pet Stroller Assembling



4: Open the basket
Pull the support iron rod inside the basket onto the fixed seat, that is, to open the basket.
5: As shown in the picture, rotate the tent and handle, and lock them with a clicking sound when holding the handle vertically; After lifting the handle and locking it, press down on the hood strip. When you hear a clicking sound, the hood strip is locked and installed.

Note: The carrying weight of this basket is 10kg.

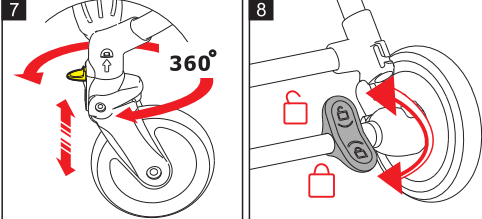
Use Pet Stroller



6: Adjustment and use of awnings and handles
As shown in Figure 1, press the adjustment buttons on both sides to unlock, and the hood will automatically pop open and unlock, while also unlocking the handle together. Then, as shown in Figure 2, the tent can be opened and the canopy strip and handle can be moved.

Note: Pressing the adjustment button will simultaneously unlock the awning and handle, and adjust according to the real-time situation.

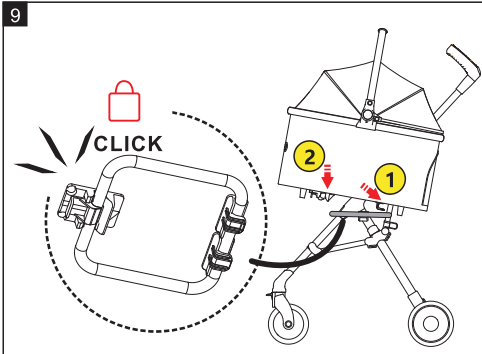
Use Pet Stroller



7: Front wheel positioning buckle Operation
pull descend, wheel rotate 360 degrees;
Pull get on, wheel alignment to walk straight.

8: Rear wheel brake Operation
Pull down, Wheel brake; Pull on, The wheel brake.

Use Pet Stroller

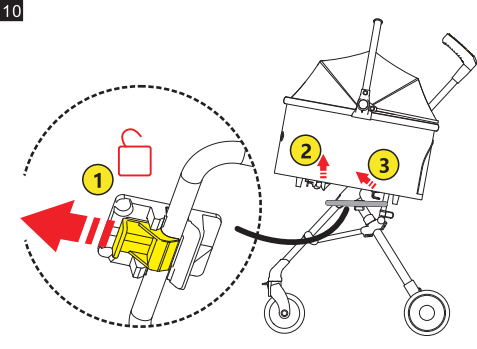


9: Install the basket onto the frame
As shown in the figure, 1. Align the hook mouth with the pipe, 2. Press down the basket, and then lock the butt joint with a "click" sound.

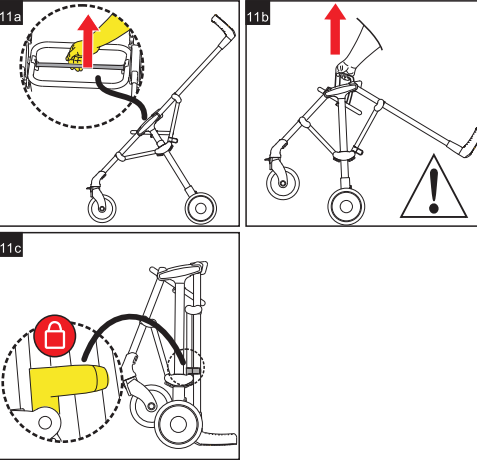
10: Basket disassembly

As shown in the figure, 1 pull the hook lock, 2 lift the basket, and 3 exit the hook opening.

Use Pet Stroller



Fold Pet Stroller



11: Collect the vehicle equivalent Operation.

11a: Lift the seat pull rope to unlock and start retracting the pet stroller.

11b: Shake vigorously in the direction of the arrow as shown in the figure twice to lift and retract the vehicle.

Attention: Shake vigorously and lift twice.

11c: Hook up ;OK!



operation video

Maintenance

1.To protect your baby from accidental injury, please regularly inspect and maintain this vehicle. The cloth cover cannot be soaked and washed, When cleaning the cloth cover, please directly use a cleaning tool such as a hairbrush to clean the stains, and use household soap to clean other parts or neutral detergent.

2.Regularly check whether there are loose screws, damaged parts, or broken stitches. If necessary, replace damaged components. When disassembling, please carefully follow the instructions to avoid unnecessary damage.

Warning: Do not approach the fire

1.Users and guardians should carefully read this manual before using it and keep it properly for future reference, Failure to follow this manual may affect the safety of children.

2. When the baby is in use, the caregiver must not leave! When adjusting the frame, please keep the baby away from moving parts.

3.The maximum load capacity of this basket is 10kg, and the maximum load capacity of the storage basket is 2kg. It is not allowed to be overweight.

4. It is prohibited to use accessories not provided by the manufacturer.

5. Placing any load on the handle will affect the stability of the vehicle.

6. Before using the cart, ensure that all locking devices are locked.

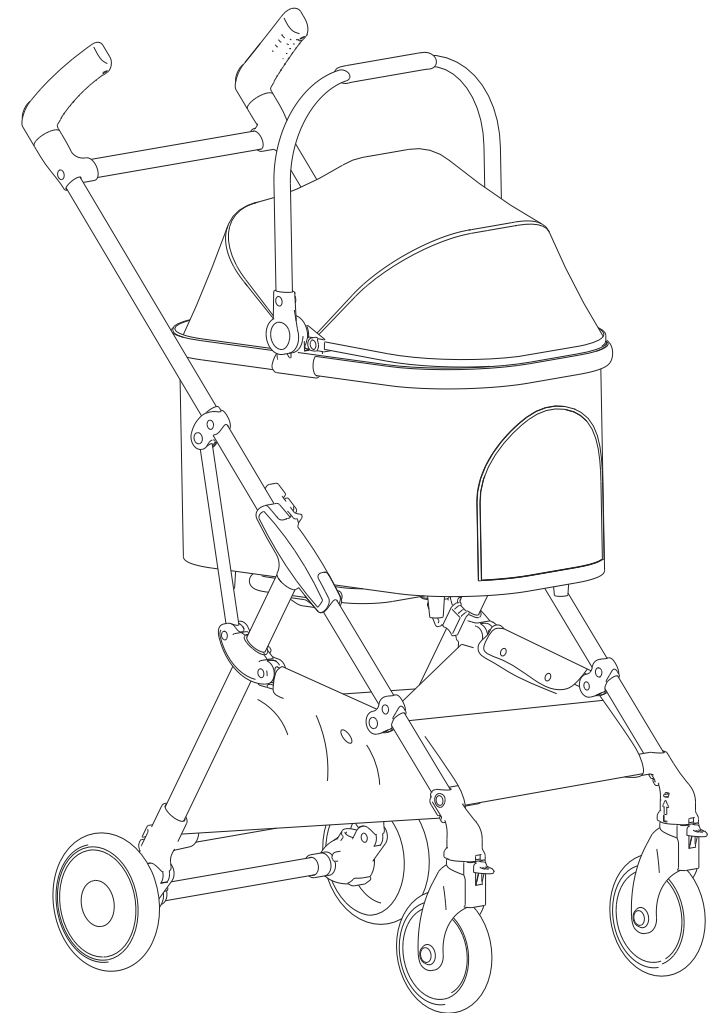
7. Do not use the vehicle in hazardous areas such as uneven sites, near stoves, etc.

8.To avoid suffocation, plastic covers should be kept away from babies.

Pet Stroller

Instructions for use

SKU : A68-PS-001



Thank you for purchasing this pet cart!

- Users and guardians should carefully read this product manual before use and keep it properly for future reference. If not used according to the storytelling, it may affect the safety of babies and babies.
- The use of pictures in the instructions is to illustrate the operation method and product structure of the product. In case of small differences between the actual object and the drawing, please refer to the actual object as the standard.
- In order to improve the quality of the product, we may modify some of the structure and appearance of this product without informing you. Please understand.