

## CONTACT US

Note: After opening the package, Please inspect the product immediately for damage in transit or missing parts. If there is any missing, please contact us.



# Wall mirror Installation Instruction

For your safety,  
please read this instruction  
before installation.

# DIFFERENT STYLES OF MIRRORS



Wall Mirror

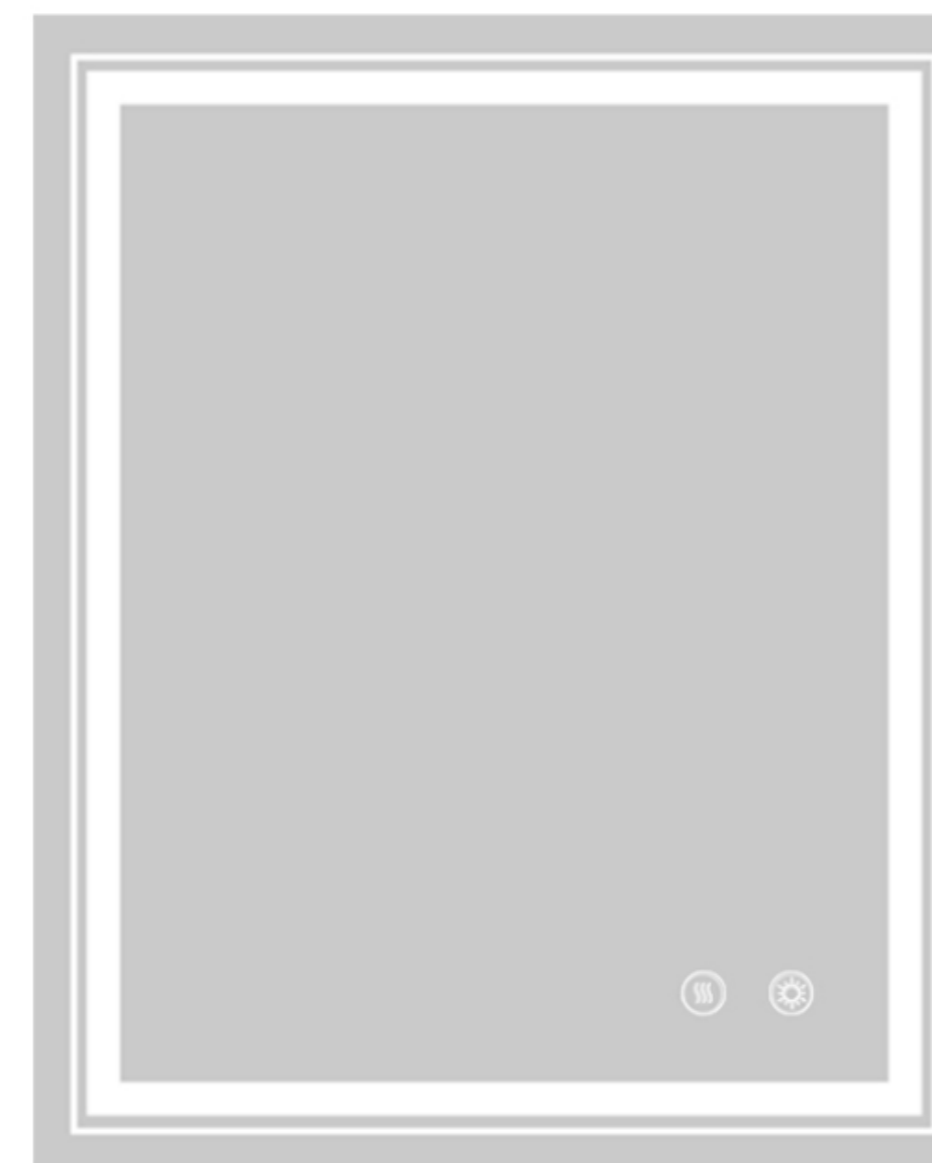


Frontlit/Backlit Mirror(2 Buttons)



Frontlit&Backlit Mirror(3 Buttons)

# TWO-BUTTONS



 : Defog Button

Touch to turn on defogging function.

 : Light Button

Short press to turn on/off.

Long press to adjust the brightness.

# THREE-BUTTONS



 : Defog Button

Touch to turn on defogging function.

 : Color Button

Select light color, cold light / natural light / warm light.

 : Light Button

Short press to turn on/backlit/frontlit/off, 3s later long press to adjust the brightness.

**Tip:** Please check the detailed operation steps on the details page of the style, or enter JSneijder Amazon Store to view the video!

# PRODUCT DESCRIPTION

1. Our's LED mirror made with high quality and lead-free copper,5mm ultra-thin glass,and environmental friendly material.
- 2.The service life of LED light can reach 50,000 hours, which is five times that of traditional light bulbs.



For The LED Mirror:

The service life of LED light can reach 50000 hours, which is five times that of traditional light bulbs.

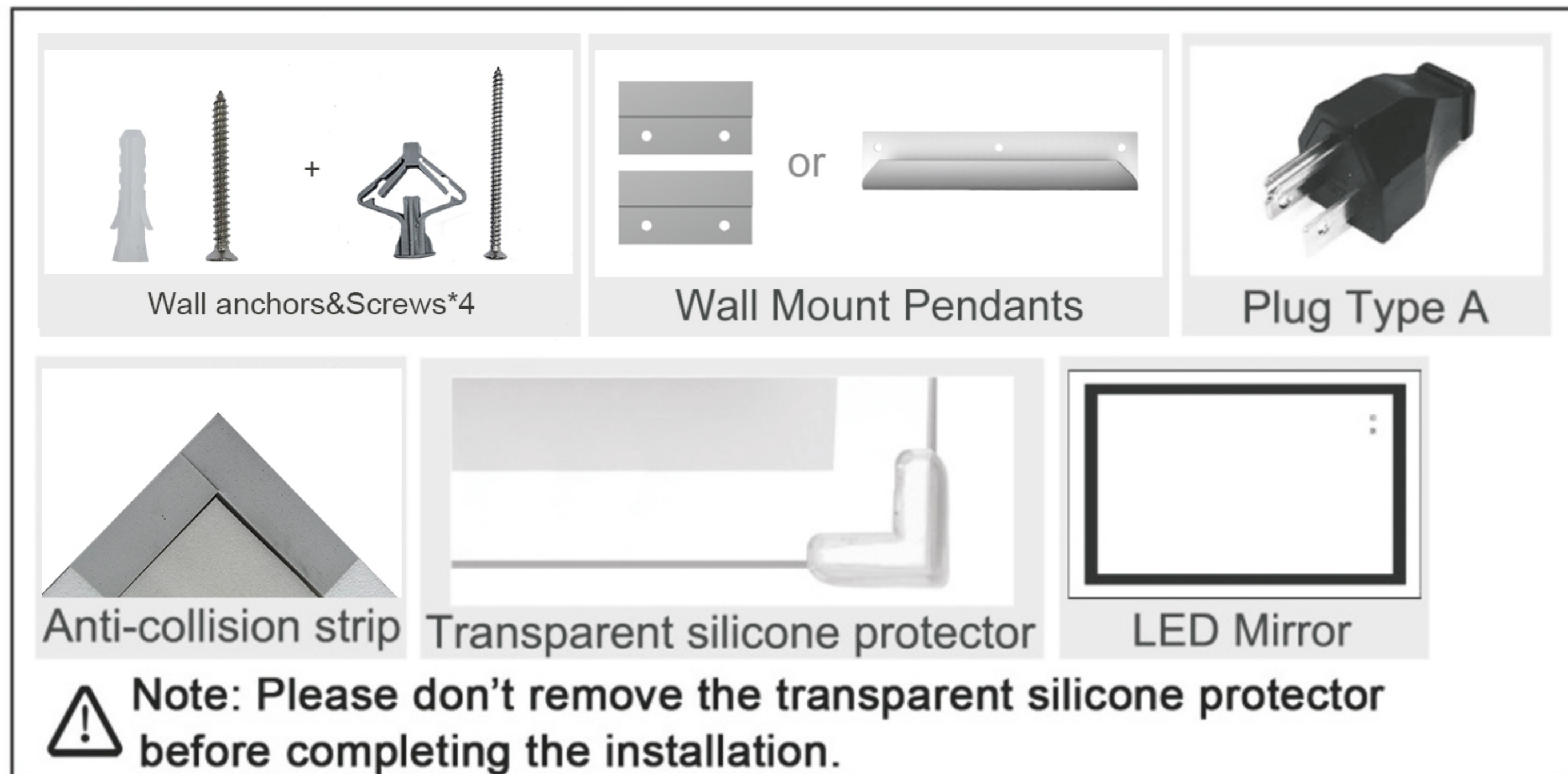


# PRODUCT SPECIFICATION OF LED MIRROR

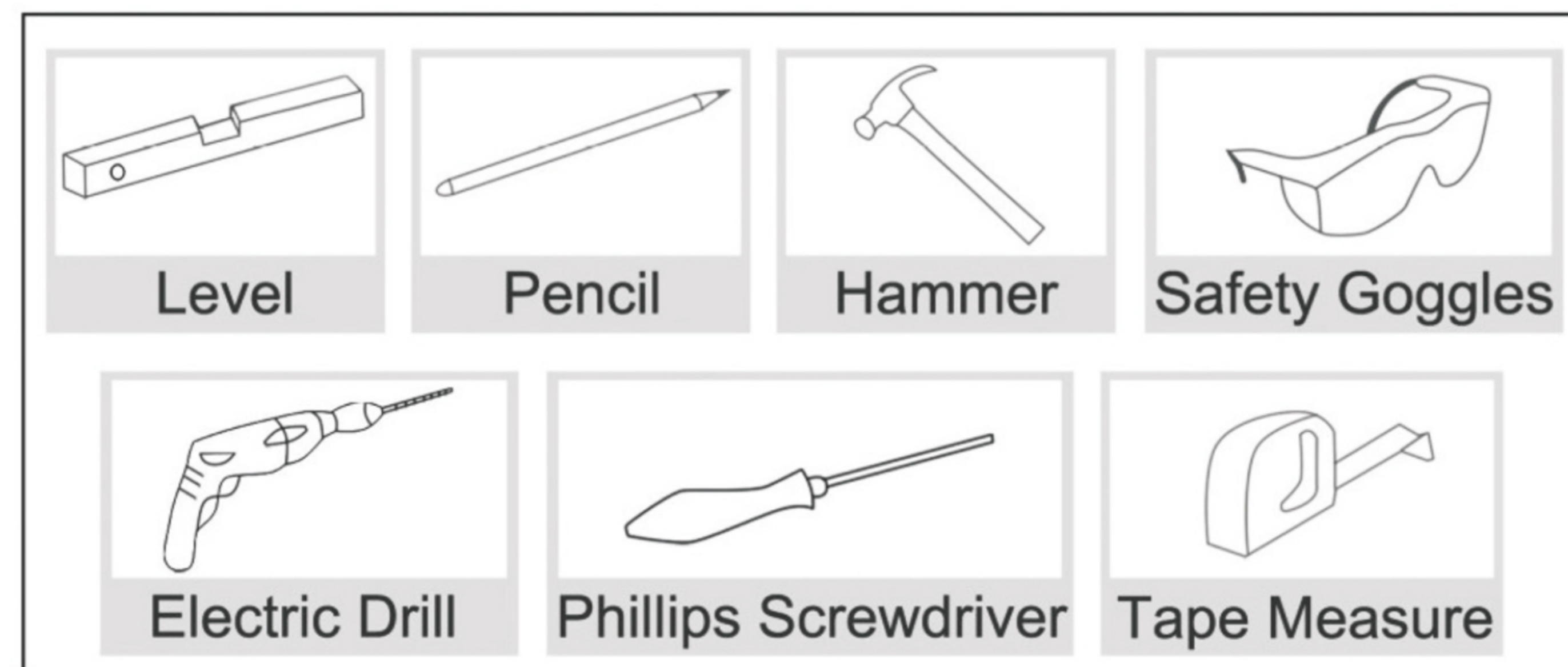
PARAMETER	SPECIFICATION
Color Temperature	3000K/4500K/6000K
	6000K
Input Voltage	AC100-120V
Output Voltage	12V DC
CRI	≥90 Ra
Working Temperature	-20~50°C
Life Span	≥5000 hours
Anti-fog	Yes
Safety Compliance	ETL
IP Rate	IP54
Mirror Glass	5 mm
Wiring Method	Hardwired / Plug in
Switch	Touch Sensor Switch
Mounting Method	Wall Mount

**⚠ Note:**After opening the package,Please inspect the product immediately for damage in transit or missing parts.If there is any missing,Please contact us.This manual is intended to guide the installation and care instruction.

## PACKING LIST



## INSTALLATION TOOLS



## BEFORE INSTALLATION

**⚠ Thank you very much for using our products, in order to facilitate the use of our products, please read this instruction carefully before you start installation.**

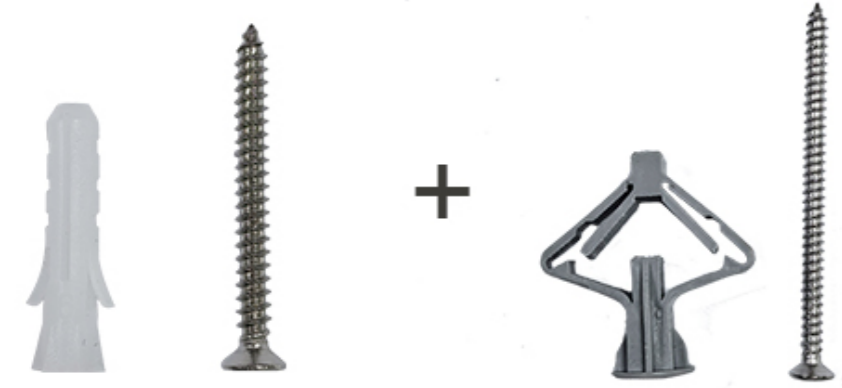
1. Carry gently and avoid knocks to all sides and edges of the glass.  
Please do not remove the transparent silicone protector before installation.
2. Ensure there are no hidden pipes or cables in the wall before drilling
3. Ensure that the location to fix the mirror is sturdy enough for the whole weight of the full kit (solid stone or brick walls).
4. Installed by a qualified technician is recommended.
5. Wear suitable eye protection while drilling. Be careful when using power tools near water.
6. It requires at least two persons to perform this installation

### For the LED mirror.

1. Keep the voltage between 100V and 120V, ideally 110V.  
When the home voltage exceeds 120V, please remember to use a transformer
2. You can connect the wires from the center on the back of the mirror directly to your electrical connection box or the plug.
3. Disconnect power before installing, adding or changing any component.

# INSTALLATION OF WALL MOUNT PENDANTS

① Please check whether the accessories are all in the package before installation



Wall anchors&Screws\*4



WALL MOUNT PENDANTS\*2

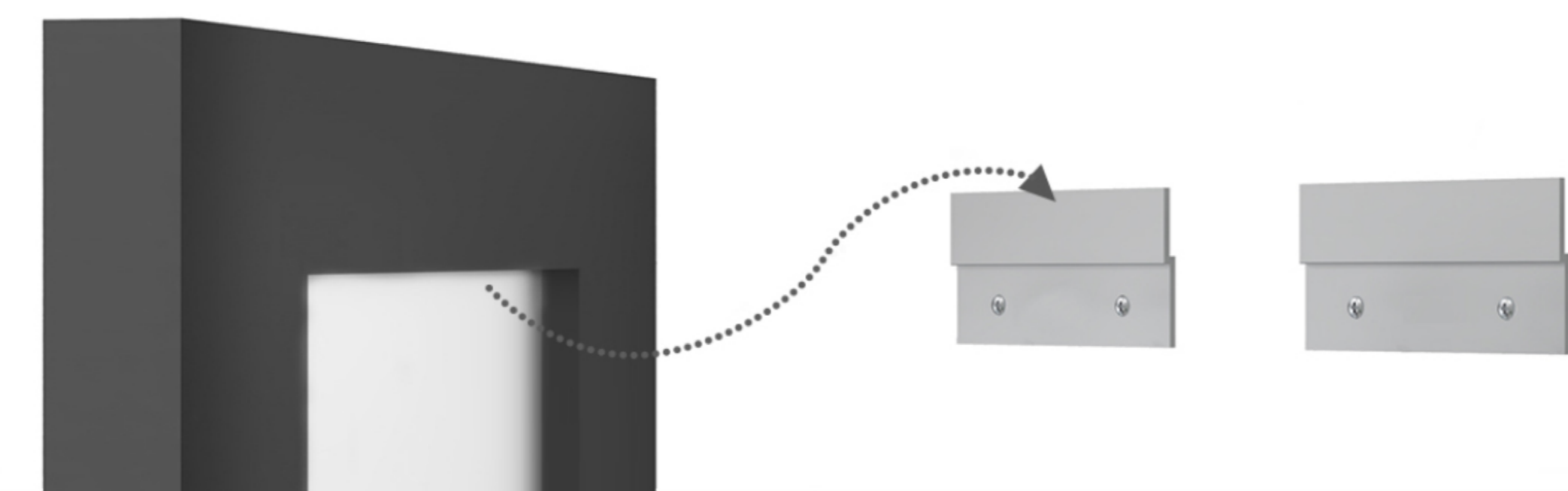
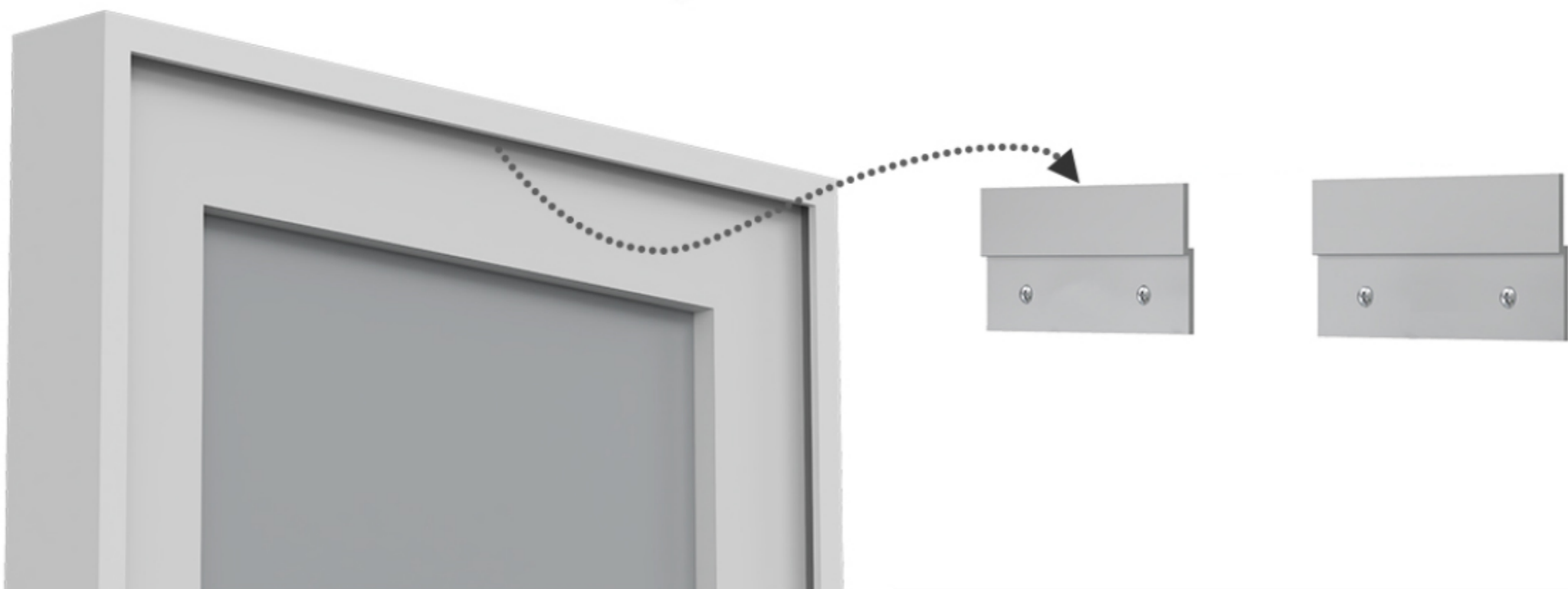


② Measure and mark the location of the holes. Drill a hole. (Use a 5/16" drill bit).



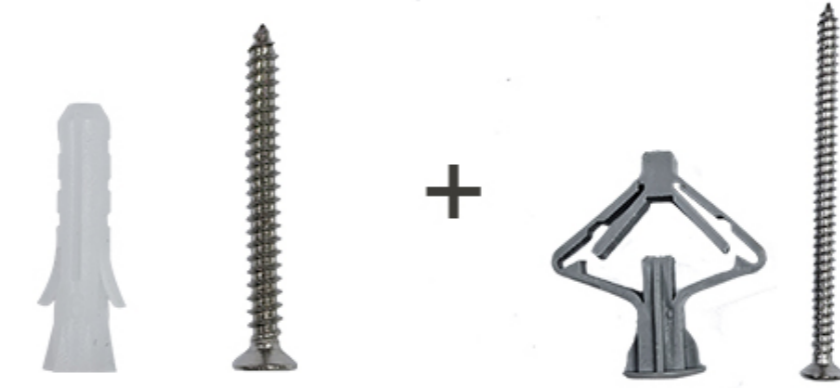
③ Push the wal anchor gently into the hole. Drive the screw into the wall anchor.

④ Clip the mirror to the wall via fixed part.

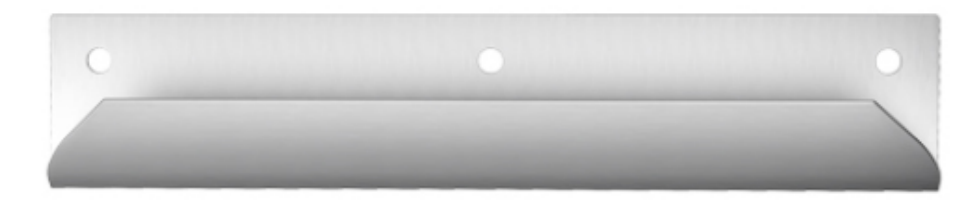


# INSTALLATION OF WALL MOUNT PENDANTS

① Please check whether the accessories are all in the package before installation



Wall anchors&Screws\*4



WALL MOUNT PENDANTS\*1

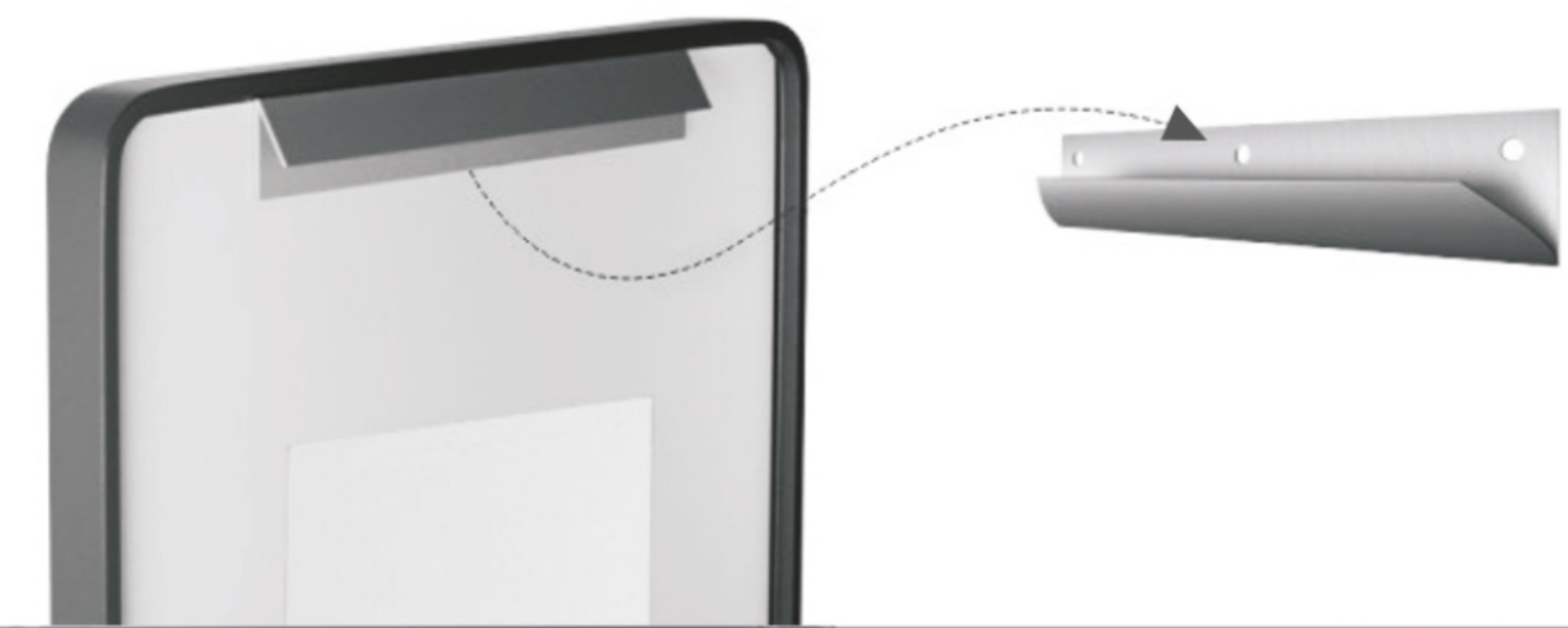


② Measure and mark the location of the holes. Drill a hole. (Use a 5/16" drill bit).



③ Push the wal anchor gently into the hole. Drive the screw into the wall anchor.

④ Clip the mirror to the wall via fixed part.



## USE AND CLEANING INSTRUCTION

⚠ In order to keep the LED mirror look perfectly, we suggest using and cleaning the mirror system regularly.

1. Please use in safe voltage range. (100V-120V)
2. Use electrical tape to wrap around the wires to prevent leakage
3. Do not strike mirror glass with hard or sharp items

⚠ Please obey the following procedure when you clean the mirror.

1. It is recommended to use mild liquid detergent or colorless cleaning agent, paired with a clean and soft cloth to clean the mirror.
2. Do **NOT** use any acidic detergent to clean the mirror, as it may damage the surface of the mirror.

✓ Mild detergent

✗ Acid detergent

### ★ Product Warranty

Manufacturer warranty for 1 year from date of purchase.

## CONNECT THE POWER

There are three power wires behind the mirror, including the live wire (black) and the neutral wire (white) and the ground wire (green). You can connect the wires to standard switched lighting circuit or plug.

If you want to use the plug to connect the power, you can follow these steps:

- ① Remove the plug cover.
- ② Unscrew the screws on each of the plug's pins.
- ③ Insert the twisted copper wires into the holes in the pins.
- ④ Tighten the little screw on each of the plug's pins.
- ⑤ Make sure the wire is tightly clamped by the brake or clip.
- ⑥ Replace the cover of the plug.

