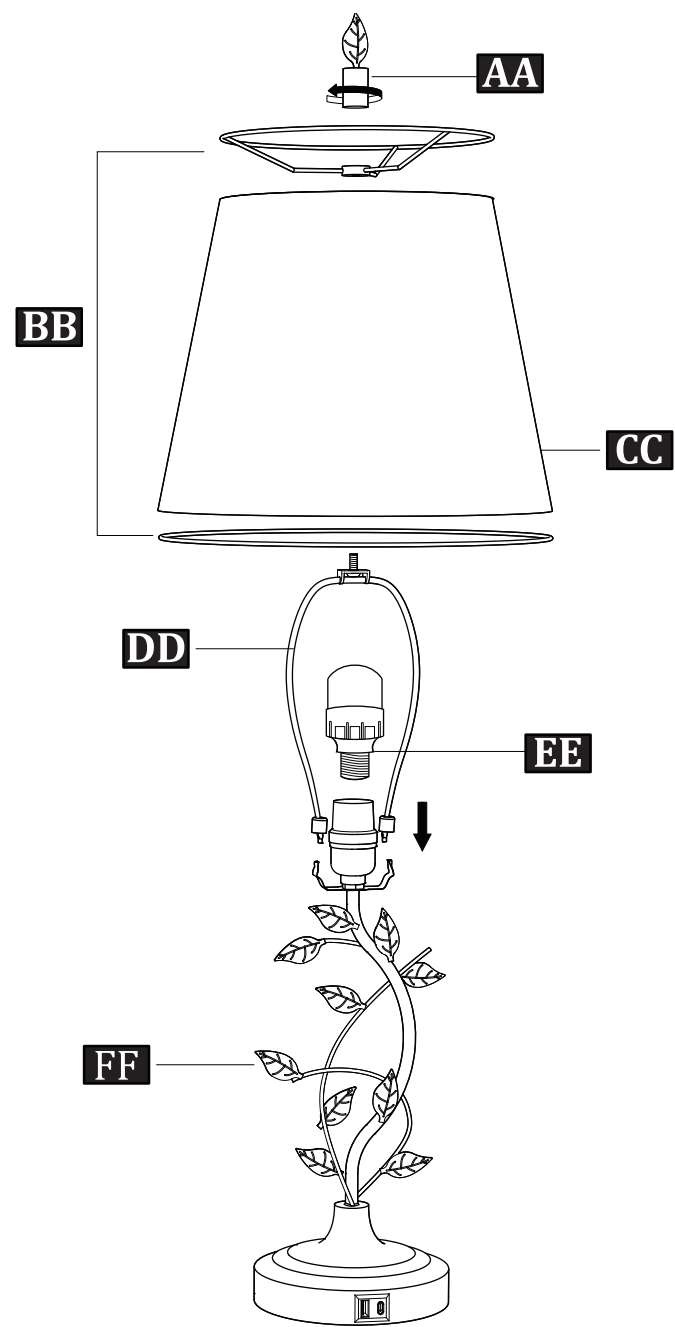

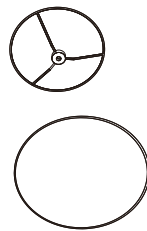
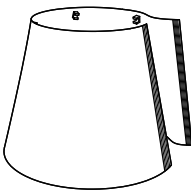
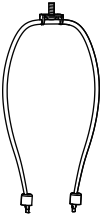
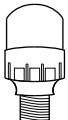
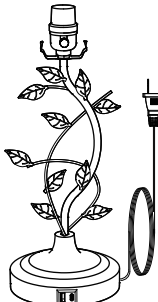


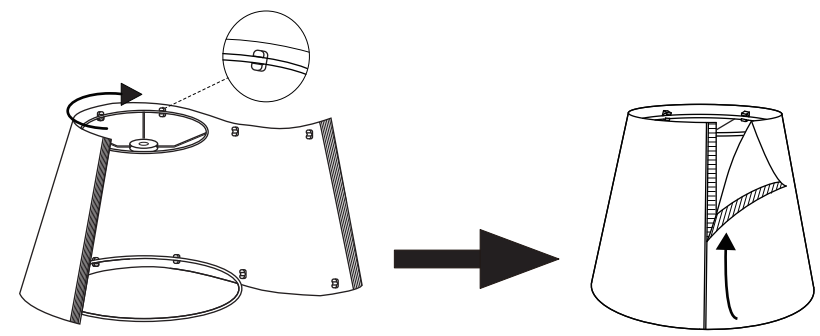
INSTALLATION DIAGRAM



					
AA	BB	CC	DD	EE	FF

EASY INSTALLATION

- STEP1** Fit the **BB** part in the **CC** part, Attach one edge of the velcro to another.
- STEP2** Put the **DD** part on the **FF** part.
- STEP3** Fix the lampshade on the **DD** part.
- STEP4** Install the **AA** part and **EE**.



PRODUCT SPECIFICATIONS

Input:	110-120V~,60Hz
Bulb Wattage:	6W
Lampholder:	E26
Control Method:	Touch

Using Tips

Plug in the power first, then gently touch the metal part of the lamp three times and you can get three different brightness levels from low to high.

TROUBLE SHOOTING

- 1.If your lamp does not work, please make sure that plug is firmly in and touch the base of the lamp to turn on.
- 2.If the lampshade is unstable, please screw the AA part.
- 3.If you have other questions, please feel free to contact us.

CUSTOMER SERVICE & WARRANTY

Thank you for your support and purchase of our products.
If you encounter any problem after receiving the goods or during the use of the products, please feel free to contact us on the Wayfair platform.

We have a professional customer service team to serve you.
Your email will receive a reply within 24 hours after it is sent.

Here's the way to contact us:

1. Log in your account
2. My Account --> click "Help & Contact"
3. Choose the specific item you want to communicate with us
4. Send your message or email
5. You will receive our reply within 24 hours

Note: Our products have a two-year warranty.

If the product cannot be used normally within the warranty, please contact us, we will do our best to give you a satisfactory answer.



This device complies with Part 15 of the FCC Rules. Operation is subject to the following two conditions: (1) this device may not cause harmful interference, and (2) this device must accept any interference received, including interference that may cause undesired operation.

USER GUIDE

