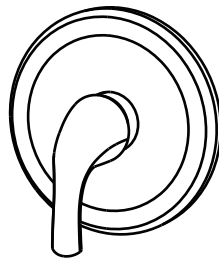


HomLUX

INSTALLATION MANUAL

Single-Handle 1-Spray Round Tub and Shower Faucet



FE540043D3

Business Name: FDC Development LLC

Business Address:

6550 Jimmy Carter Blvd Suite B

Peachtree Corners GA 30071 US

Web: www.homluxproducts.com

Any query please feel free to email our service team:

help@homluxproducts.com

Thanks for choosing HomLux.

Please keep the box and packaging materials until your product is completely installed. If you have any questions, require technical assistance or have any problems with your product:

 ***DO NOT RETURN TO STORE***

***Please contact our Customer Service Team
help@homluxproducts.com***

Have the model number available and retain a copy of your receipt with purchase date for reference.

If for any reason this product does not meet your expectations, please be sure to repack this product in the original box and packaging material to avoid damage during transit.

⚠ WARNING: This system/device must be set by the installer to ensure safe, maximum temperature. Any change in the setting may raise the discharge temperature above the limit considered safe and may lead to hot water burns.

⚠ NOTICE TO INSTALLER: CAUTION!—As the installer of this valve, it is your responsibility to properly INSTALL and ADJUST this valve per the instructions given. This valve does not automatically adjust for inlet temperature changes, therefore, someone must make the necessary Rotational Limit Stop or temperature knob adjustments at the time of installation and further adjustments may be necessary due to seasonal water temperature change. YOU MUST inform the owner/user of this requirement by following the instructions. If you or the owner/user are unsure how to properly make these adjustments, please email us help@homluxproducts.com.

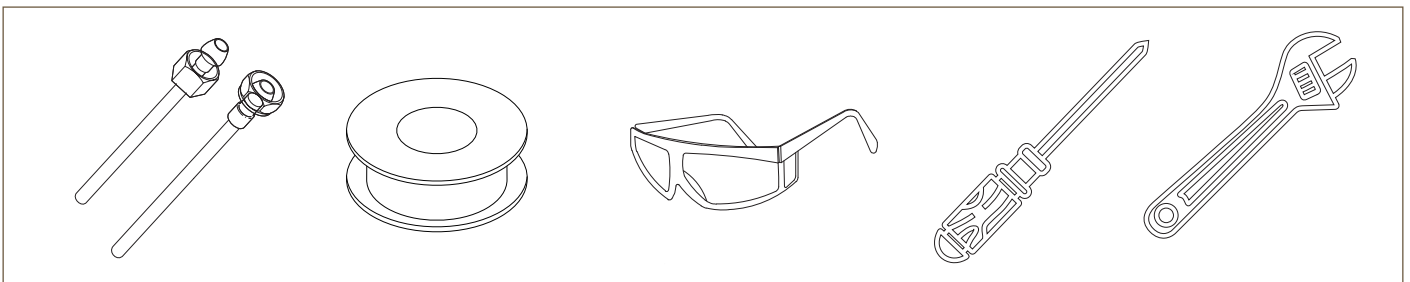
After installation and adjustment, you must affix your name, company name and the date you adjusted the Rotational Limit Stop or temperature knob to the caution label provided and apply or attach the label to the back side of the closest cabinet door and the warning label to the water heater. Leave this Instruction Sheet for the owner's/user's reference.

⚠ WARNING: This pressure balanced valve is designed to minimize the effects of outlet water temperature changes due to inlet pressure changes, commonly caused by dishwashers, washing machines, toilets etc. It may not provide protection from hot water burns when there is a failure of other temperature controlling devices elsewhere in the plumbing system, if the rotational limit stop or temperature knob is not properly set or if the hot water temperature is changed after the settings are made or if the water inlet changes due to seasonal changes. Do not install a shut-off device on either outlet of this valve. When this type of device shuts off the water flow, it can defeat the ability of the valve to balance the hot and cold water pressures and could increase the risk of a burn injury.

Prior to Installation:

- Make sure you have all necessary parts by checking the diagram and parts list. If any part is missing or damaged, please contact HomLux Customer Service.
- Supply lines should be purged to clean impurities before connecting the unit.
- The hot water supply should be connected to the left and the cold water supply to the right, when viewed from the operating position. If this is not taken into account can cause permanent damage to the cartridge.
- In cold areas or indoor temperatures less than 40 degrees Fahrenheit and there's no use of faucets for an extended period of time, please turn off inlet water valve and drain the remaining water inside the supply pipe. This will avoid faucet damage cause by the expansion of frozen water.

• You may need



• Cleaning and Care

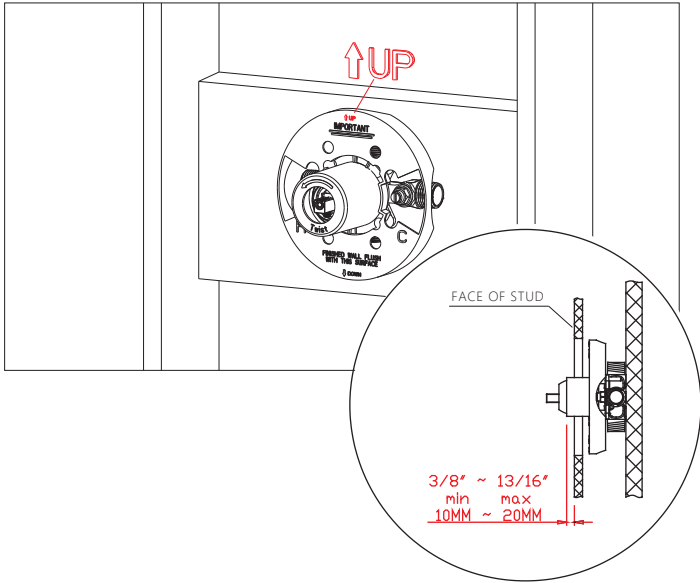
Care should be given to the cleaning of this product. Although its finish is extremely durable, it can be damaged by harsh abrasives or polish. To clean, simply wipe gently with a damp cloth and blot dry with a soft towel.

• Read all instructions prior to installation

CAUTION

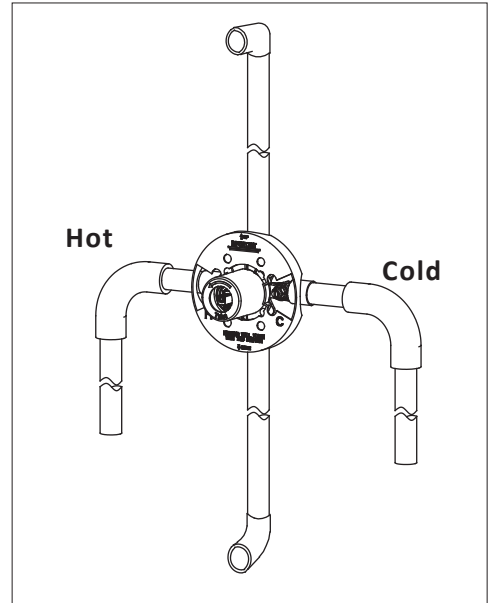
Failure to read these instructions prior to installation may result in personal injury, property damage, or product failure. Manufacturer assumes no responsibility for product failure due to improper installation.

Installation Guide



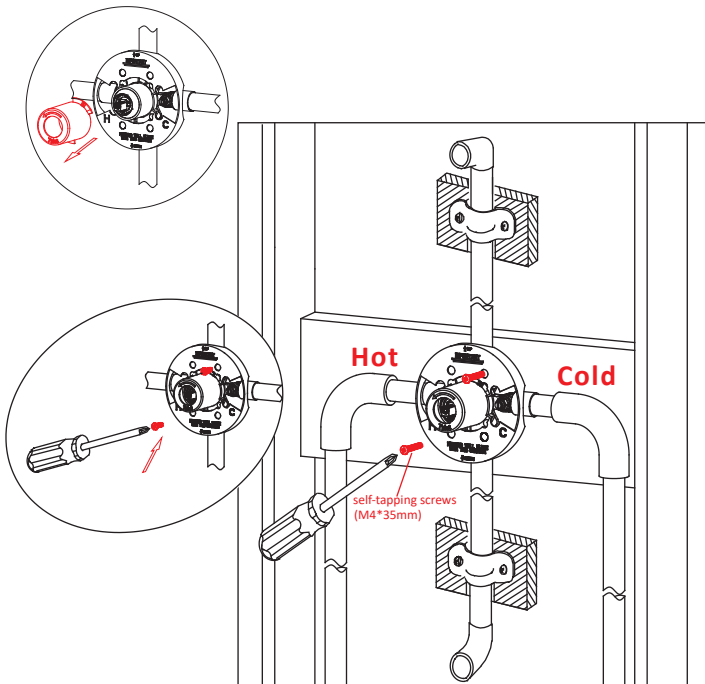
STEP 1: SHUT OFF WATER SUPPLIES

- a Confirm the installed place of the pressure balance valve on the wood block.
- b Confirm the thickness of your installation back plate.
- c During installation ensure that the word "UP" is on top and valve's plane is perpendicular to the ground.



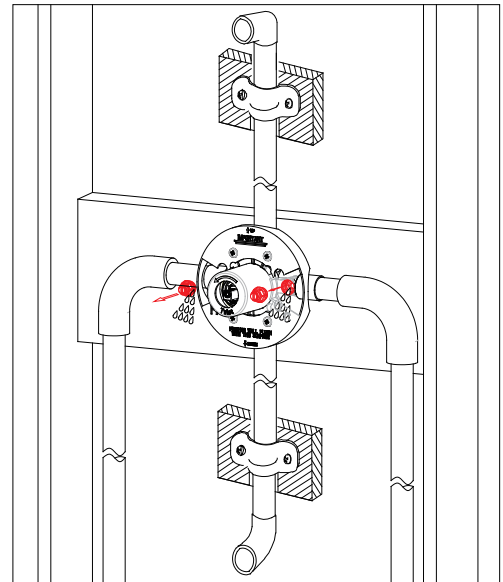
STEP 2: PIPE CONNECTION

- a Pipe material: plastic/metal.
- b Note: That the water inlet pipe shall not be connected reversely. It is required to be hot on the left and cold on the right.
- c Note: When using metal pipe for welding connection, the valve core, check valve and other plastic parts must be removed.



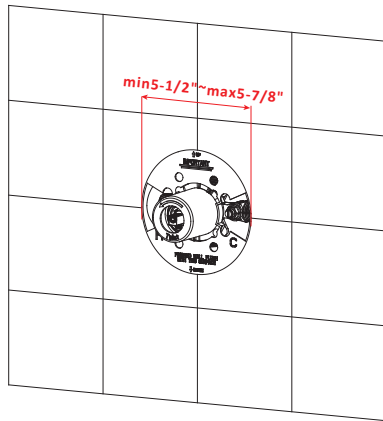
STEP 3: INSTALL THE VALVE BODY & WATER PIPE

- a Remove the protective cover. Unscrew the fixing screws on the valve body protective cover with a cross screwdriver. And bring two self-tapping screws (M4*35mm) to lock the valve body.
- b Connect the hot (left) & cold(right) inlet tube and outlet tube, ensure the tube fix is stable on the wooden block.
- c Reinstall the protective cover to prevent damage to the valve body.



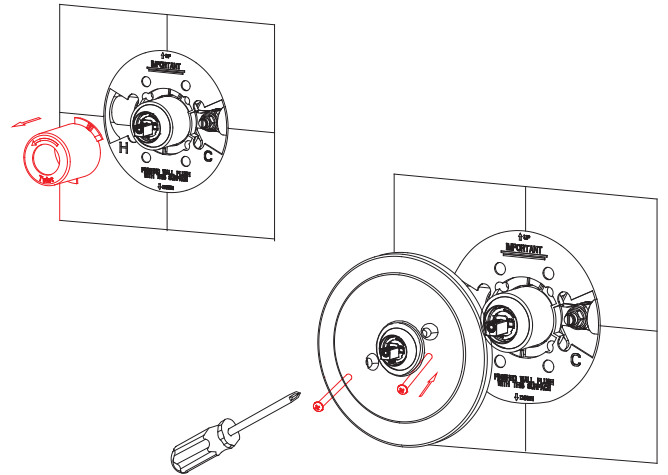
STEP 4: PIPELINE FLUSHING

- a Remove the check valve, open the water supply source and flush the pipeline.
- b After flushing, close the water supply and reinstall the check valve.
- c Re open the water supply source, and check that there is no leakage at the pipeline and all connections of the pipeline.
- d Turn off the water supply after testing.



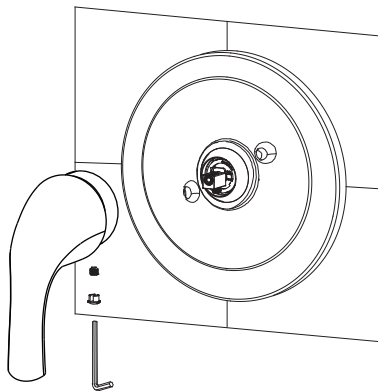
STEP 5: CUT THE TILE HOLE

- a Cut the size of the tile hole according to the size and shape of the protective cover.
- b Place tile outside the wooden wall (note: keep the same central point for the tile hole with the protective cover).



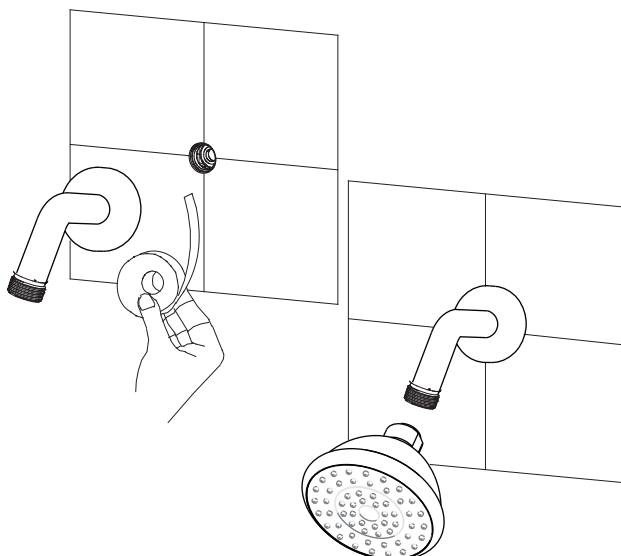
STEP 6: INSTALL THE DECORATIVE PLATE

- a Remove the decorative plate.
- b Lock the deck plate into the body and attach to the wall, then tighten screws (package included).



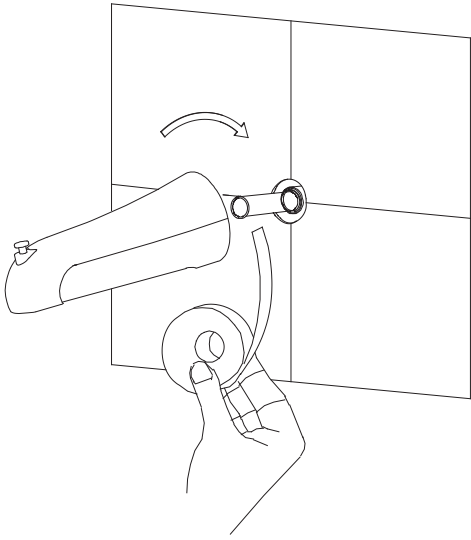
STEP 7: INSTALL THE HANDLE

- a Put on the handle, then tighten screws.



STEP 8: INSTALL THE SHOWER HEAD

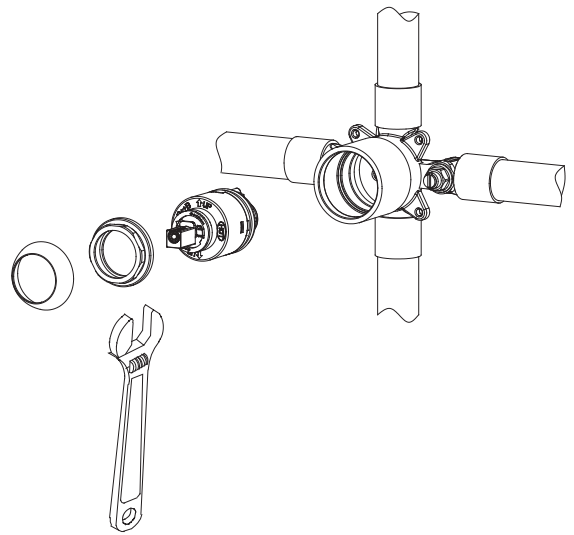
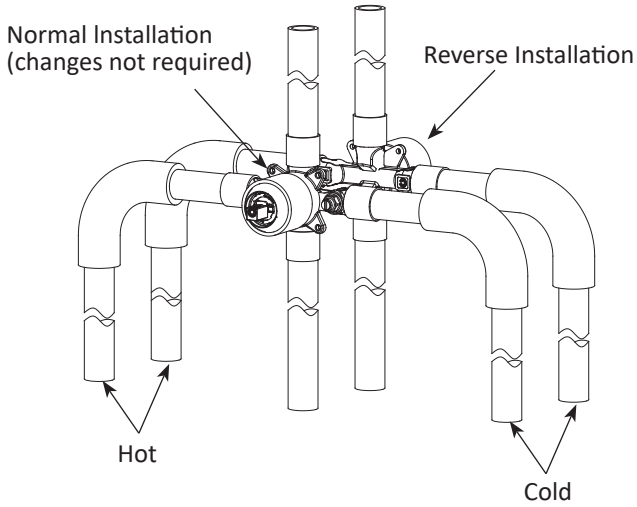
- a Install the shower arm, shower head and flange to the fitting. Tighten the showerhead to the shower arm, attach to the wall, then apply pipe tape. Be sure to tape in a clockwise direction.



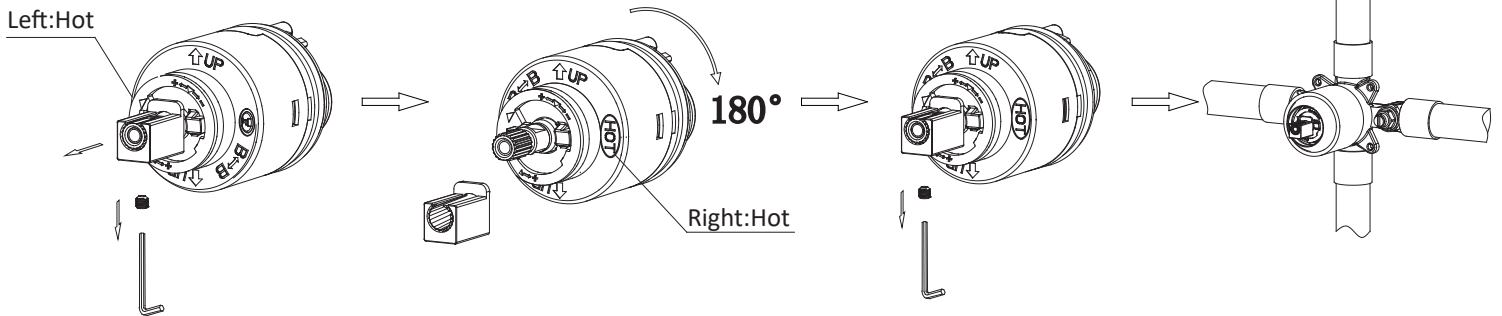
STEP 9: INSTALL THE SPOUT

a Attach spout to the pipe outside of the wall, then tighten by screwing on.

BACK TO BACK INSTALLATION



a Remove the valve core



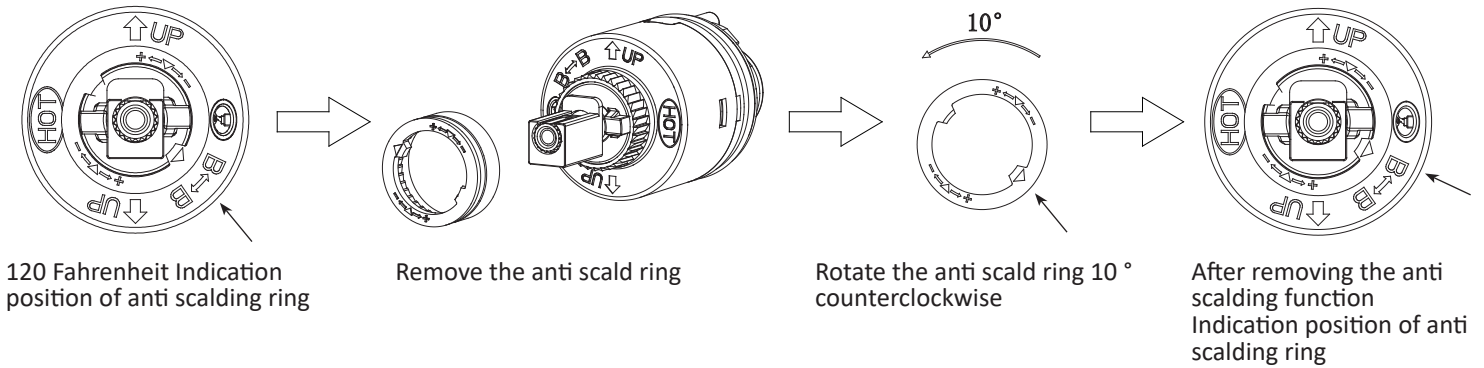
b Remove locating sleeve

c Rotate the valve core 180°

d Install the locating sleeve

e Install the valve core

ADJUSTING THE ROTATIONAL LIMIT STOP



⚠ WARNING: The Rotational Limit Stop is used to limit the amount of hot water available such that, if set properly, the user will not be scalded if the handle accidentally is rotated all the way to “hot” when a person is showering or filling a tub.

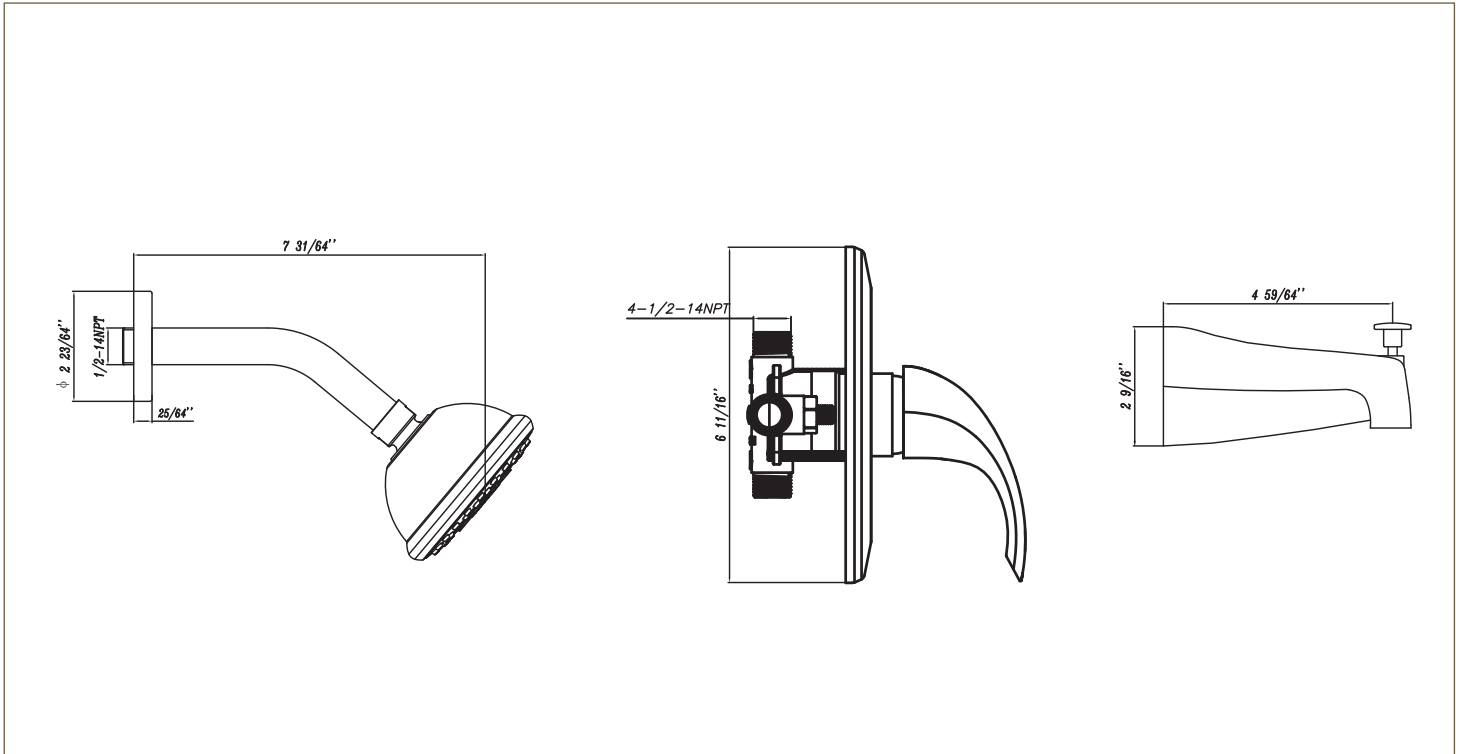
⚠ WARNING: In some instances, setting the Rotational Limit Stop in the hottest position (full counterclockwise) could result in scald injury. It is necessary to adjust the Rotational Limit Stop so that the water coming out of the valve will not scald the user when the handle of the valve is rotated to the hot side.

- According to the majority of industry standards, the maximum allowable temperature of the water exiting the valve is 120°F (Your local plumbing codes may require a water temperature less than 120°F).
- The Rotational Limit Stop may need to be readjusted seasonally if the inlet water temperature changes. For example, during the winter, the cold water temperature is colder than it is during the summer which could result in varying outlet temperatures. A water temperature for a comfortable bath or shower is typically between 90°F - 110°F.
- Place a thermometer in a plastic tumbler and hold in the water stream. If the water temperature is above 120°F, the Rotational Limit Stop must be repositioned clockwise to decrease valve outlet water temperature to be less than 120°F or to meet the requirements of your local plumbing codes.
- To adjust the temperature of the water coming out of the valve, pull the disc back to a position where it is possible to remove the Rotational Limit Stop and readjust the arrow position to the desired temperature. Clockwise will decrease the outlet temperature, counterclockwise will increase the outlet temperature. Repeat as necessary. Push disc until fully seated.

Specification



Single-Handle 1-Spray Round Tub and Shower Faucet



• STANDARD SPECIFICATIONS

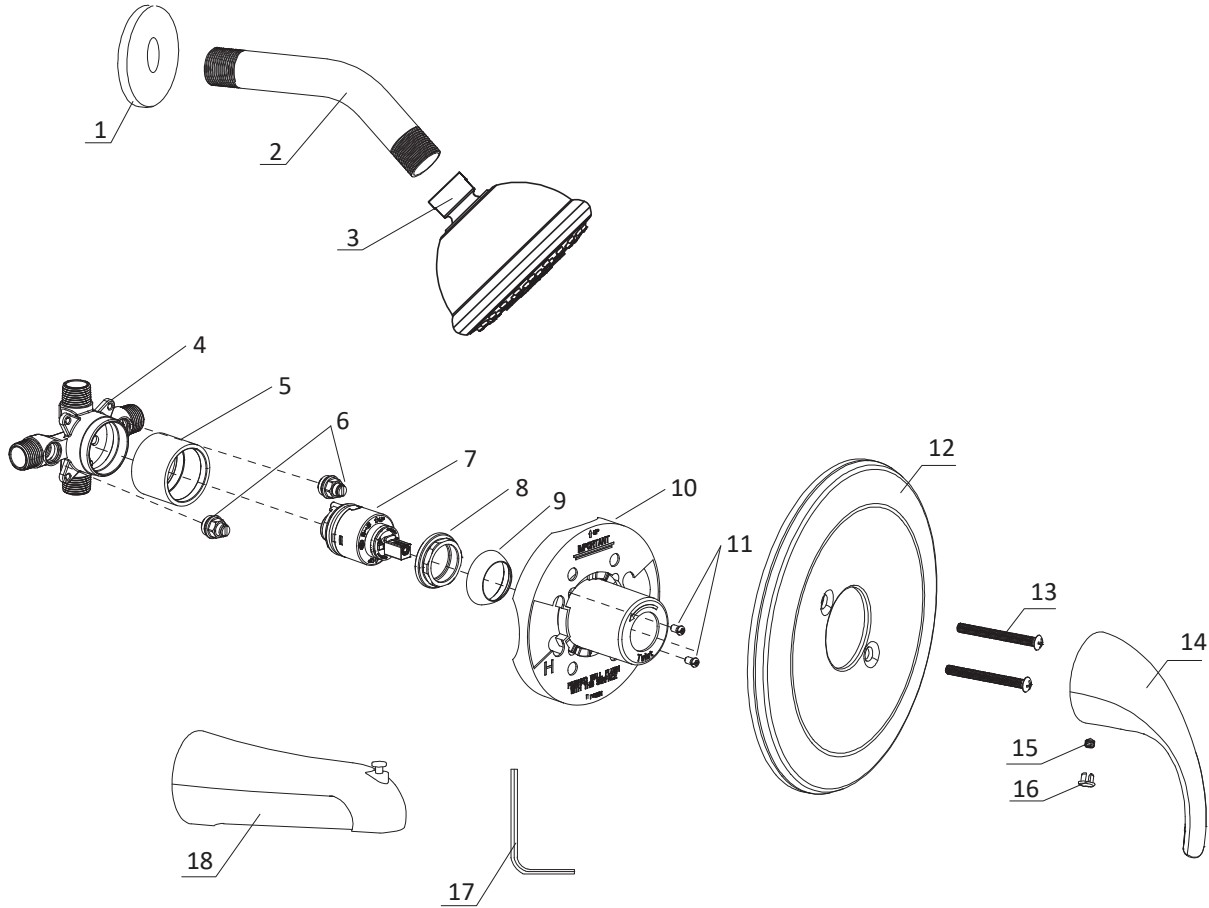
HomLux wall mount fixed shower head stabilizes the water pressure during use to keep the outlet water temperature stable

- Showerhead is limited to 2.5gpm(9.5L/min) at 60PSI
- Back-to-back installation capability
- Solid brass forged body
- Field adjustable to limit handle rotation into hot water zone, safety protection
- Temperature only controlled with handle
- Ceramic Valve for Lifetime Drip-Free Operation
- Pull-up tub spout: 1/2" NPT iron pipe thread connection or 1/2" copper spout tube soldering connection

• CERTIFICATION

- CUPC Certified

Replacement Part List



NO.	Description	Quantity
1	Flange	1
2	Shower arm	1
3	Shower head	1
4	P/B valve with diverter (1/2" - 14NPT M.I.P.)	1
5	Hub	1
6	Check valve	2
7	Ceramic cartridge	1
8	Fix ring	1
9	Cap	1
10	Guard	1

NO.	Description	Quantity
11	Screw	2
12	Decorative plate	1
13	Screw	2
14	Handle	1
15	Allen screw	2
16	Button	1
17	Hexagon wrench	1
18	Spout	1

Limited Lifetime Warranty

•Parts and Finish

All parts (other than electronic parts and batteries) and finishes of HomLux faucets purchased from authorized HomLux sellers are warranted to the original consumer purchaser to be free from defects in material and workmanship for as long as the original consumer purchaser owns the home in which the faucet was first installed. For commercial purchasers, (a) the warranty period is ten (10) years for multi-family residential applications and (b) five (5) years for all other commercial applications, in each case from the date of original purchase. For purposes of this warranty, the term "multi-family residential application" refers to the purchase of the faucet from an authorized HomLux seller by a purchaser who owns but does not live in the residential dwelling in which the faucet is initially installed, such as in a rented or leased single unit or multi-unit detached home (duplex or townhome), or a condominium, apartment building or community living center. The following installations are not considered multi-family residential applications, are excluded from the 10-year warranty and are subject to the 5-year warranty: industrial, institutional or other business premises, such as a dormitory, hospitality premises (hotel, motel or extended stay location), airport, educational facility, long- or short-term healthcare facility (hospital, rehabilitation center, nursing, assisted or staged-care living unit), public space or common area.

Electronic parts (other than batteries), if any, of HomLux faucets are warranted to the original consumer purchaser to be free from defects in material and workmanship for five (5) years from the date of original purchase or, for commercial purchasers, for one (1) year from the date of original purchase. No warranty is provided on batteries.

•What We Will Do

HomLux will repair or replace, free of charge, during the applicable warranty period (as described above), any part or finish that proves defective in material and/or workmanship under normal installation, use and service. If repair or replacement is not practical, HomLux may elect to refund the purchase price in exchange for the return of the product. These are your exclusive remedies.

•What Is Not Covered

Because HomLux is unable to control the quality of HomLux products sold by unauthorized sellers, unless otherwise prohibited by law, this warranty does not cover HomLux products purchased from unauthorized sellers.

Any labor charges incurred by the purchaser to repair, replace, install or remove this product are not covered by this warranty. HomLux shall not be liable for any damage to the faucet resulting from reasonable wear and tear, outdoor use, misuse (including use of the product for an unintended application), freezing water, abuse, neglect or improper or incorrectly performed installation, maintenance or repair, including failure to follow the applicable care and cleaning instructions. HomLux recommends using a professional plumber for all installation and repair of faucets. We also recommend that you use only genuine HomLux replacement parts.

•What You Must Do To Obtain Warranty Service or Replacement Parts

A warranty claim may be made and replacement parts may be obtained by contacting us by mail as follows (please include your model number and date of original purchase):

In the United States:
FDC Development LLC
6550 Jimmy Carter Blvd Suite B
Peachtree Corners GA 30071
Attention: Customer Service
help@homluxproducts.com

•Limitation on Duration of Implied Warranties.

Please note that some states/provinces (including Quebec) do not allow limitations on how long an implied warranty lasts, so the below limitations may not apply to you. TO THE MAXIMUM EXTENT PERMITTED BY APPLICABLE LAW, ANY IMPLIED WARRANTY, INCLUDING THE IMPLIED WARRANTIES OF MERCHANTABILITY AND OF FITNESS FOR A PARTICULAR PURPOSE, IS LIMITED TO THE STATUTORY PERIOD OR THE DURATION OF THIS WARRANTY, WHICHEVER IS SHORTER.

•Limitation of Special, Incidental or Consequential Damages.

Please note that some states/provinces (including Quebec) do not allow the exclusion or limitation of special, incidental or consequential damages, so the below limitations and exclusions may not apply to you. TO THE MAXIMUM EXTENT PERMITTED BY APPLICABLE LAW, THIS WARRANTY DOES NOT COVER, AND HomLux SHALL NOT BE LIABLE FOR, ANY SPECIAL, INCIDENTAL OR CONSEQUENTIAL DAMAGES (INCLUDING LABOR CHARGES TO REPAIR, REPLACE, INSTALL OR REMOVE THIS PRODUCT), WHETHER ARISING OUT OF BREACH OF ANY EXPRESS OR IMPLIED WARRANTY, BREACH OF CONTRACT, TORT, OR OTHERWISE. HomLux SHALL NOT BE LIABLE FOR ANY DAMAGE TO THE FAUCET RESULTING FROM REASONABLE WEAR AND TEAR, OUTDOOR USE, MISUSE (INCLUDING USE OF THE PRODUCT FOR AN UNINTENDED APPLICATION), FREEZING WATER, ABUSE, NEGLIGENCE OR IMPROPER OR INCORRECTLY PERFORMED INSTALLATION, MAINTENANCE OR REPAIR, INCLUDING FAILURE TO FOLLOW THE APPLICABLE INSTALLATION, CARE AND CLEANING INSTRUCTIONS. Notice to residents of the State of New Jersey: The provisions of this warranty, including its limitations, are intended to apply to the fullest extent permitted by the laws of the State of New Jersey.

•Additional Rights

This warranty gives you specific legal rights, and you may also have other rights which vary from state/province to state/province. This is HomLux's exclusive written warranty and the warranty is not transferable. If you have any questions or concerns regarding our warranty, please contact us as provided above.