

Pacific Bay Limited Lifetime Warranty

Pacific Bay products have been manufactured under the highest standards of quality and workmanship. Pacific Bay warrants to the original purchaser for as long as the original purchaser owns their home that this shower head will be leak- and drip-free during normal use and that all parts and finishes of this shower head will be free from defects in material and manufacturing workmanship. Plated metal and plated plastic finishes are warranted for (1) year.

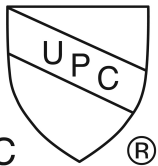
If the shower head should develop a leak or drip during the warranty period, Pacific Bay will, free of charge, provide the parts necessary to put the shower head back into good working condition by you. They may also replace any part or finish that proves defective in material and manufacturing workmanship, under normal installation, use and service free of charge. Proof of purchase (original sales receipt) from the original purchaser must accompany all warranty claims. Defects or damages caused by the use of other products or parts is not covered by this warranty. If repair or replacement is not practical, Pacific Bay may elect to refund the purchase price in exchange for the return of the product.

This warranty covers replacement of all defective parts and finishes. However, damage due to product abuse, product misuse, installation error, or the use of cleaners containing alcohol, abrasives, or other solvents, whether performed by a contractor, service company, or yourself will void this warranty. Pacific Bay will not be responsible for labor charges and/or damages incurred in installation, repair or replacement, nor any indirect, incidental or consequential damages, losses, injury costs of any nature relating to this product. Except as provided by law, this warranty is in lieu of and excludes all other warranties, conditions and guarantees, whether expressed or implied, statutory or otherwise, including without restriction those of merchantability or of fitness for use.

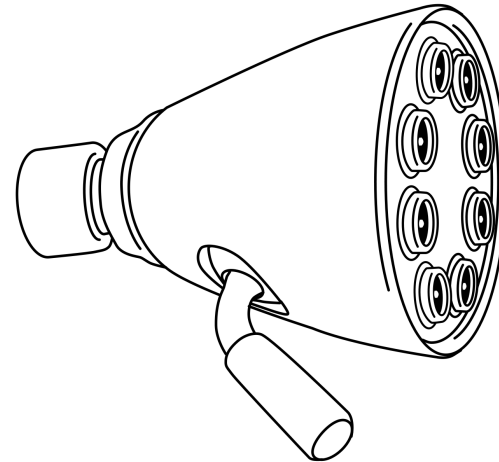
Pacific Bay will advise you on how to proceed in making warranty claims. To begin a warranty claim, write to Pacific Bay explaining the defect and include proof of purchase and your name, address and telephone number. Email is warranty@pacificbayfaucets.com.

*** Never use cleaners containing abrasive cleansers, ammonia, bleach, acids, waxes, alcohol, solvents or other products not recommended for plated metal or plastic finishes. This will void the warranty.**

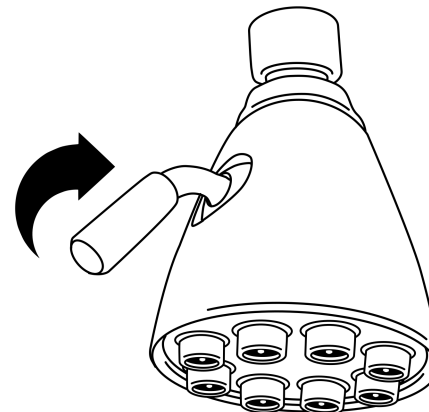
19215 SE 34th St. Ste 106-382
Camas, WA 98607



PB-S07 – JetStream Heavy Duty Brass 8-Jet Shower Head



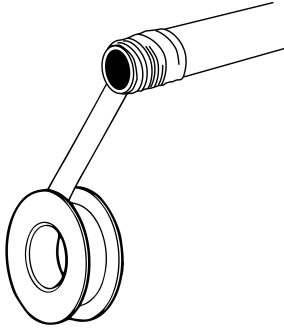
Featuring Easy Adjustment for Preferred Flow



NOTE: To reduce after shower dripping you can open the valve completely to allow water to quickly flow out of the shower head.

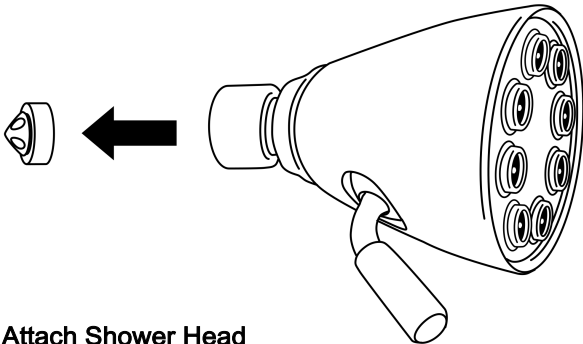
1 Apply Plumbers Tape

Apply plumbers tape, also known as thread seal tape, to the outlet side of the shower arm in a clockwise direction.



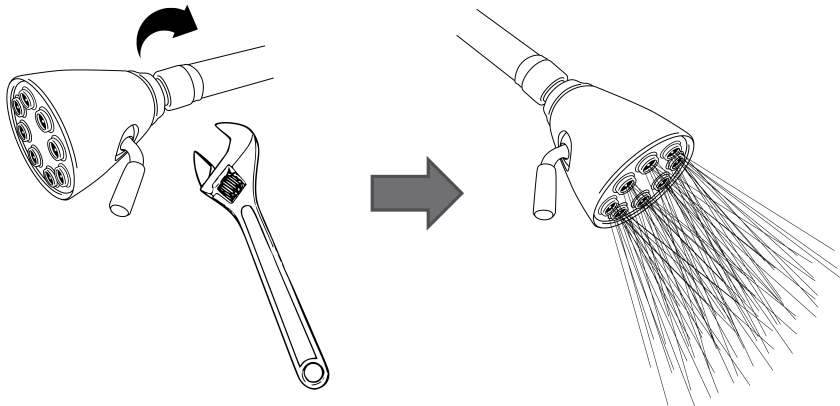
2 Remove Flow Restrictor (Optional)

If you wish to have a stronger flow you may remove the rubber flow restrictor found in the back end of the shower head.



3 Attach Shower Head

Thread showerhead onto shower arm by turning it in a clockwise direction. Tighten with an adjustable wrench. After installing, turn on water supply to check for leaks.



MAINTENANCE AND CLEANING

Cleaning Tips: The finish on your shower head is designed to retain its beautiful sheen for years. To maintain the original look of the finish, a little care and caution should be used. We recommend the use of mild soap and water to clean the shower head. **THE USE OF ABRASIVE CLEANERS MAY SCRATCH THE FINISH OR CAUSE OTHER DAMAGE.**

RECOMMENDED TOOLS AND MATERIALS

- ◆ Adjustable Wrench
- ◆ Plumbers Tape (Thread Seal Tape)

BEFORE YOU BEGIN

There are a variety of things to do before installing any new plumbing system into your home or residence. Before you begin work make sure you:

- ◆ Shut off the main water supply
- ◆ Cover your drain to prevent loss of parts
- ◆ Observed any local plumbing codes
- ◆ Inspect fixture for damage - Replace as necessary

Pacific Bay reserves the right to make any revisions in the design of products without notice.