

STAINED CONCRETE UMBRELLA BASE

The Stained Concrete Umbrella Base is freestanding; wrought-aluminum construction. Base diameter is 1' x 7-3/4".

Item Number 9225 + Finish #

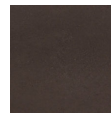
Dimensions W19.75 D19.75 H16.5

Weight 77

Material Wrought Aluminum



#0 Ebony



#5 Tuscan Brown