

# Warranty Card

## Special statement

- 1, the company reserves the right to change the product technology, without notice.
- 2, product appearance, color, if different, subject to the subject.

## User Info

username	Telephone	Zip code
mailing address	State / Province / State	City (county)
Product number	Numbering	
Place of purchase	Date of purchase	
Maintenance outlets	Invoice number	

- 1, the quality of the product itself can be warranty. Note: The panel is not covered by the warranty, please unbox the first time to check.
- 2, one of the following circumstances, do not enjoy free warranty service, but can pay repair:
  - (1) Consumers are damaged by their use, maintenance and improper custody;
  - (2) the damage caused by the self-dismantling of the consumer;
  - (3) the warranty certificate and repair product model does not meet or altered;
  - (4) Damage caused by force majeure.
- 3, the warranty date of the starting date to the date of the product invoice.
- 4, please reprint the warranty certificate and invoice.
- 5, more than the warranty period or does not belong to the free maintenance of the product, the company maintenance center is still dedicated to your service.
- 6, if we need to provide services, please contact the local dealer or call the company service hotline.

• This product has been inspected strictly in water test before it is sent from the factory. If the display or LED light does not light up after the product is installed on the wall and the water is discharged, there are generally three reasons as below:

1. The connectors of two red and black wires are not properly covered, and the display or LED light don't light up when they touch together or touch the metal plate.
2. The connectors of the red and black wires or several other wires are not well arranged, and they are pinched or strained when they are hung on the wall, and the display or LED light don't light up when they touch the metal plate.
3. After connecting the two water inlet pipes to the hot and cold water outlet holes on the wall, when they are hung on the wall, the water inlet pipes are folded and the water output flow is too small, and the motor does not generate enough power. Then the display or LED light don't light up.

## Certificate

Inspection: Qualified

Implementation criteria: QB.2584-2007

Inspectors: \_\_\_\_\_

Production Date: \_\_\_\_\_

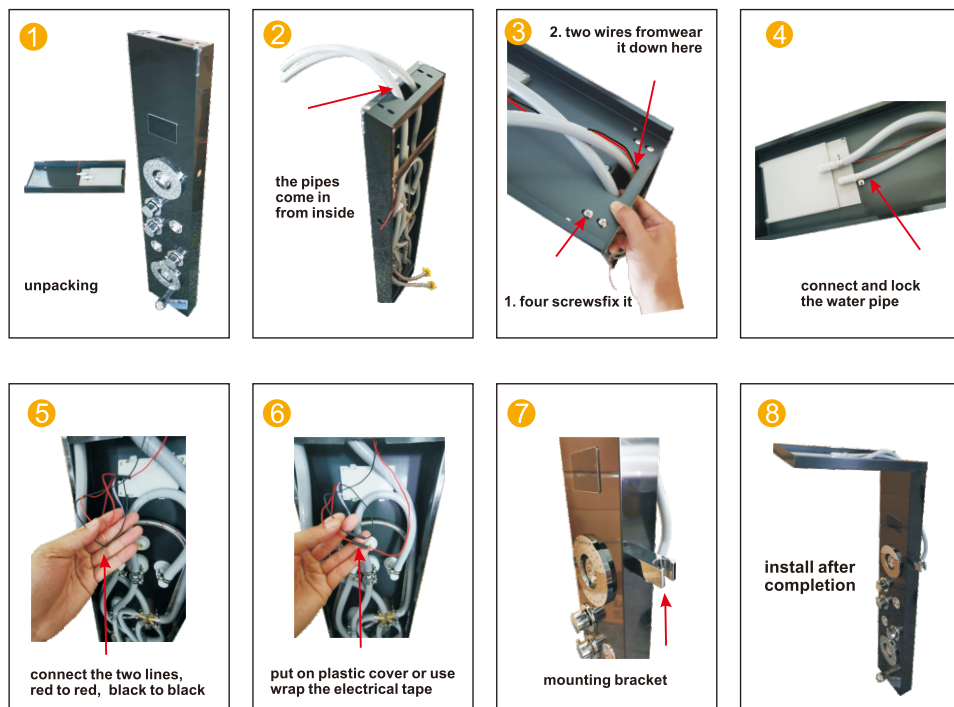
# INSTRUCTIONS

LED

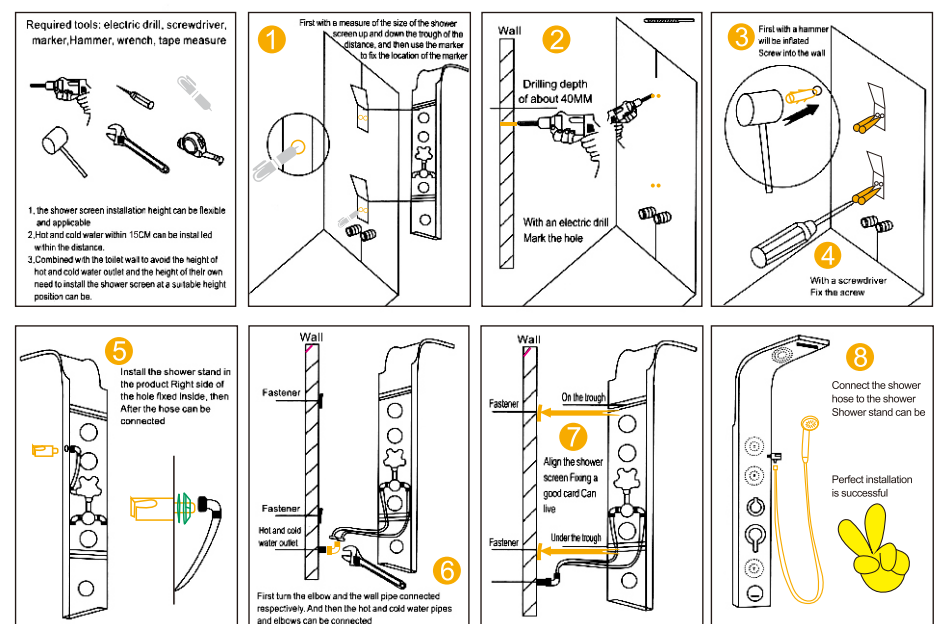
Color Digital Screen



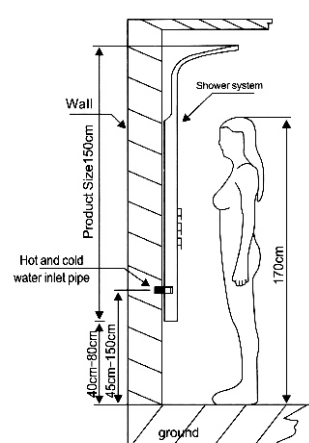
## Assembly diagram of split shower screen



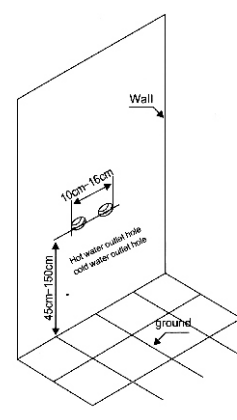
## Shower screen series installation diagram



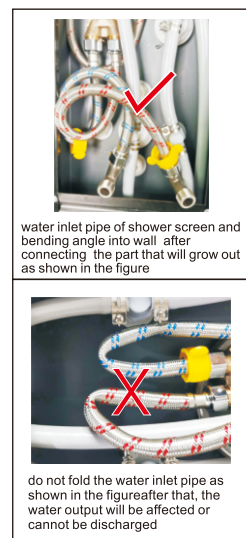
## Installation Complete side reference dimension drawing



## Reserved water layout



## Connection method of water inlet pipe



## Installation Notes

1. According to the height of the family height budget shower system installation height, measuring the shower system on the back of the bar Distance, mark on the wall, in the corresponding position of the tag fixed hanging iron (up and down each one)
2. Connect the hot and cold water hose (be sure to clean the magazine and the dirt in the wall Scale, so as not to block, affect the water effect);
3. Shower system hanging on the wall, the upper and lower two cards were clamped in two hanging paste (Note: shower After the system wall, the main body close to the wall is not shaking, do not need to use another glass glue and other tools fixed).

## Stainless steel shower system maintenance methods:

1. Regular cleaning of the product in order to keep its appearance bright and clean;
2. Clean the surface with water or a mild detergent and wipe it with a soft towel.
3. Note that the clean product of the hidden position, timely cleaning can make products lasting.