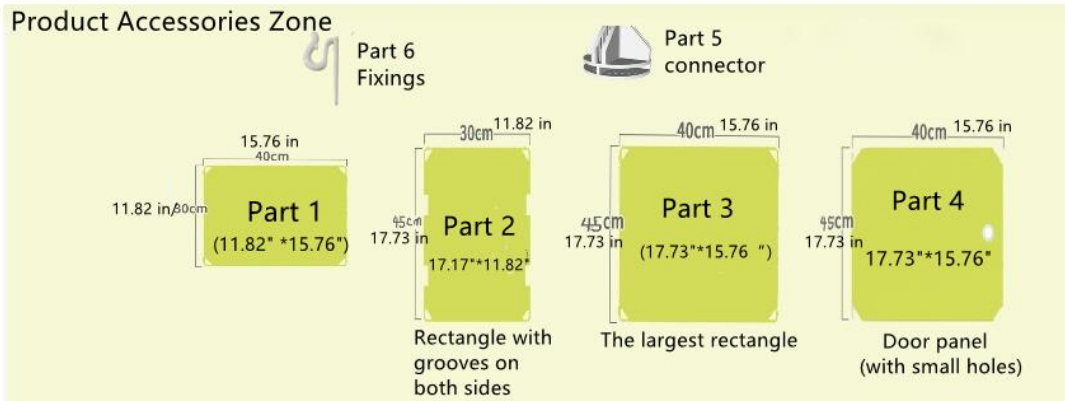
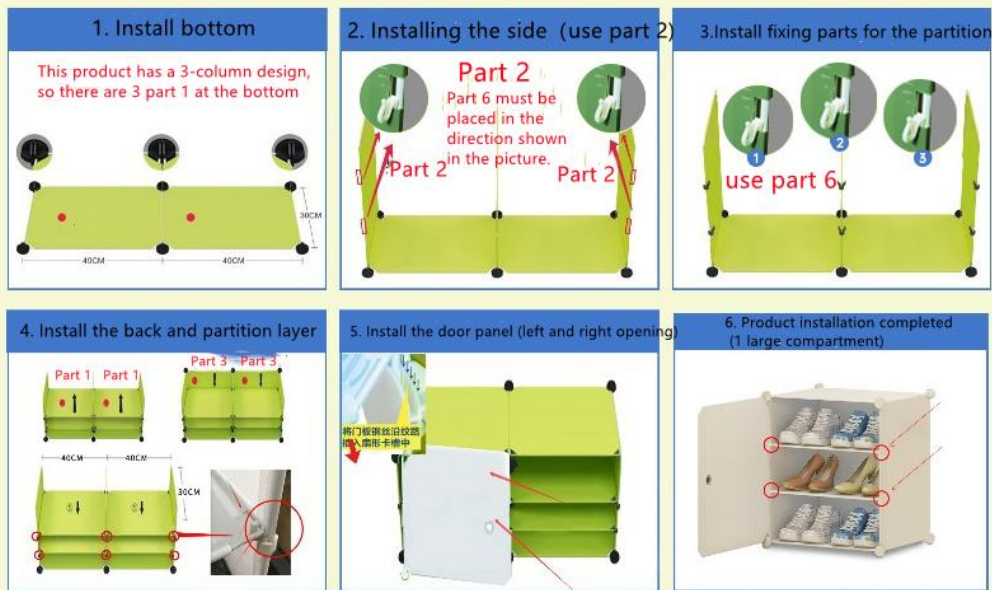


Assembly Guidelines



- Attention: 1. This is the assembly diagram, and the actual color of the product is subject to the link;
2. It is necessary to assemble according to the arrangement rules of the product, and the shape cannot be changed otherwise the product accessories will be insufficient. (Please refer to the product link for product styling)
3. This product features two partitions installed in a large compartment, forming three layers.

Installation steps



Install two partitions (Part 1) in the middle of a door panel (Part 4) to form three layers.

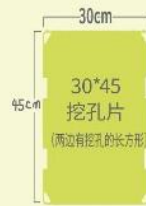
配件专区



固定件



卡扣



安装常见的误区:

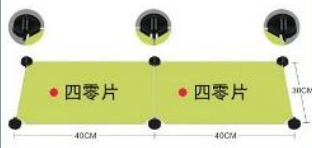
1. 买的是1列6层的，安装成了2列的，就会导致少配件。请按照买的造型拼就不会少了(买的造型请查看产品链接)
2. 买的是3层的，为什么拼出来只有一层？答：亲因为我们这款鞋柜，是一层大格子中间还需要拼两个隔板，一层变成3层的。

第一步：按照买的造型开始安装

(买的造型请查看产品链接)

1. 打好底座

查订单买的是一列，
就一个长方形打底，以此类推

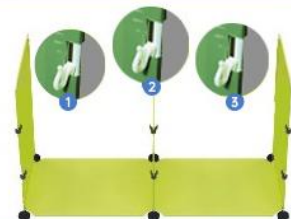


2. 安装侧面(侧面使用挖孔片)

30-45挖孔片
必须要朝如图方向



3. 安装隔层的固定件



4. 安装背面, 隔层



5. (左右开) 门板安装



6. 产品安装完成展示

