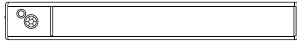


# JacksonLux

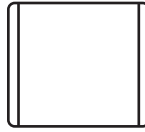
## Ultra Thin Motion Sensor Under Cabinet Light

Model # CP-CL04-12TJK

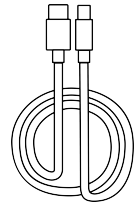
### PACKAGE CONTENTS



Cabinet Light



Iron Bracket with Adhesive Tape



USB Cord

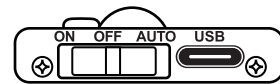
### How to use the Motion Cabinet Light

The Light has 3 working modes. ( ON- OFF - AUTO )

Note: Please remove the plastic protective film from the top of the light.

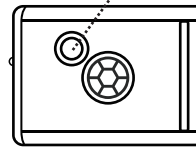
1. Slide the switch to the left (ON) position, The light will flash 2 times, then remain constantly on. Default setting when turned on: 3000K color temperature, 100% brightness. Short press the top round button to cycle through color temperatures: 3000K - 4000K - 5000K Long press (hold for more than 3 seconds) the round button to adjust brightness: Brightness will gradually decrease from 100% to 10%, then increase back to 100%, looping continuously. Release the button at your desired brightness level..
2. Slide switch to OFF to turn the light off.
3. Slide the switch to the right (AUTO) position, The light will flash 2 times, stay on for 10 seconds, and then enter the motion-sensing mode. The light will automatically turn on when motion is detected in a dark environment. It will turn off automatically after approximately 30 seconds of no motion. Short press the top round button to change the color temperature: 3000K - 4000K - 5000K. Long press the round button to adjust brightness in the same looping dimming pattern as in ON mode.

Note: This light does not have a memory function. When powered off and then turned back on, it will default to 3000K and 100% brightness.



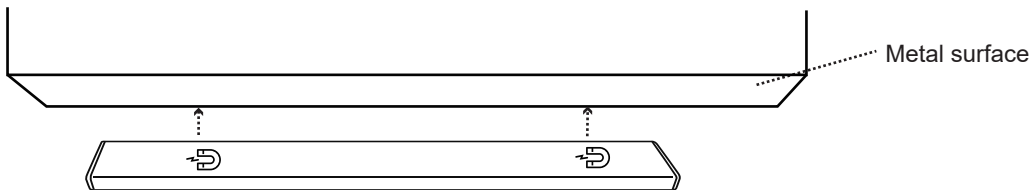
Slide

Round button

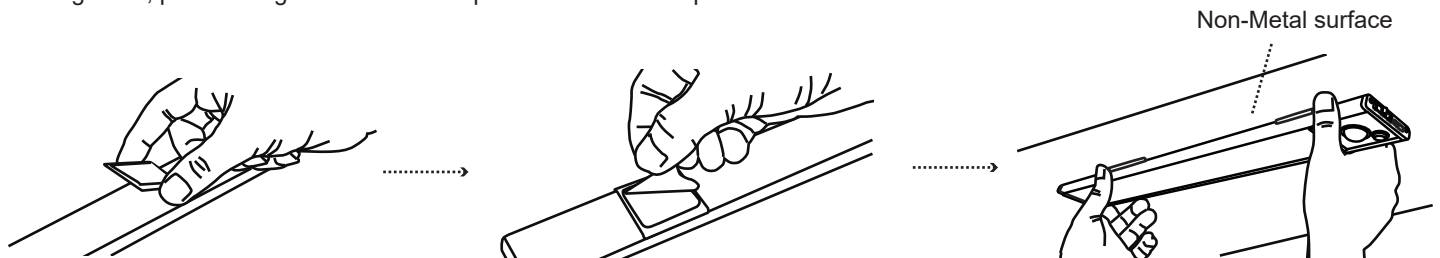


### How to install the Motion Cabinet Light

1. Sticks directly to an ironwork type surface.

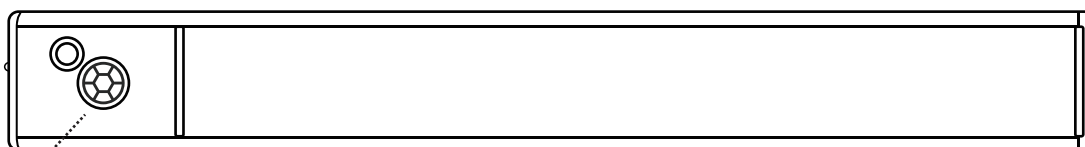


2. Before installation, clean the surface thoroughly. Attach the included metal plates to the desired location by removing the adhesive backing. Then, place the light onto the metal plates to secure it in place.



### How to charge the Motion Cabinet Light

Please use original USB cord to charge under cabinet light, the indicator turns red when the under cabinet light is charging, it turns green when the under cabinet light is fully charged.



Power indicator light

## Specification

<b>Lumen:</b> 120lm±10%(Daylight)	<b>Battery:</b> 1000mAh
<b>Color Temperature:</b> 3000K/4000K/5000K	<b>Charge Time:</b> Approx.3-4 hours
<b>Weight:</b> 0.284 LBS	<b>Product Dimension:</b> 12.01 x 1.57x 0.53inch
<b>Standby Time:</b> 30s ± 5s	<b>Sensor Range:</b> 2-5m
<b>Runtime:</b> Approx.3-4 hrs at 100% brightness.	



## SAFETY INFORMATION

- \* Please do not disassemble or modify the led light for any-purpose.
- \* Discontinue use if damaged.
- \* Please check the voltage before installing the light to make sure the voltage is correct
- \* Do not try to replace it on your own.
- \* Clean the light with a soft cloth; Do not spray liquid cleaners or water on the light.
- \* Do not burn any of the items

## WARRANTY

JackonLux provides the 7\*24 customer service and we are pleased to hear from you. This product has 36 months warranty. If you have any questions or problems, please call our customer service department at +86-400-883-1913. You could also contact us at support@JackonLuxled.com .