

ASSEMBLY INSTRUCTIONS

TOOLS REQUIRED:

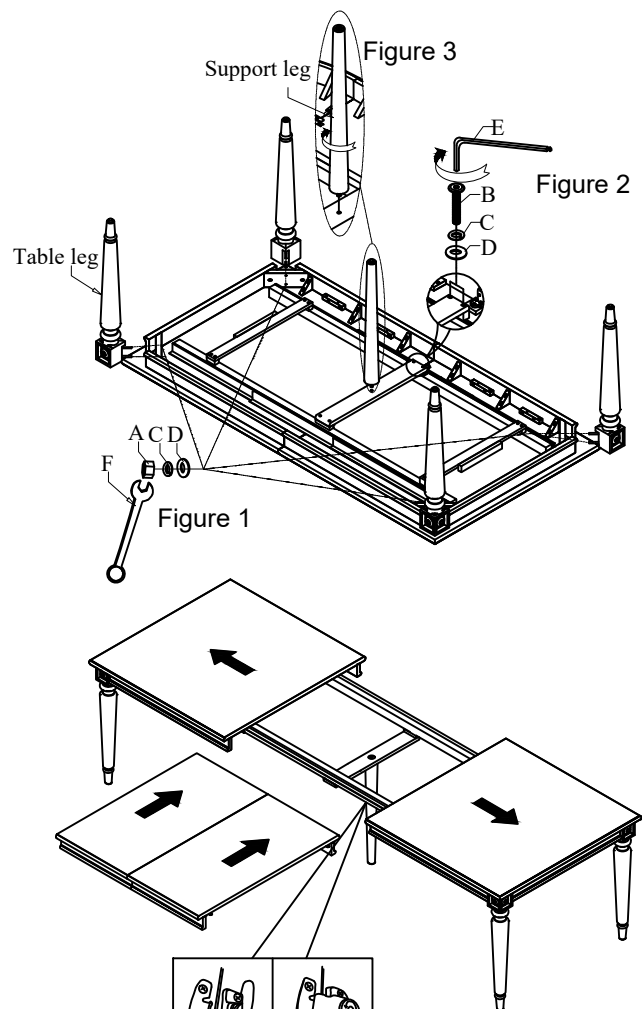
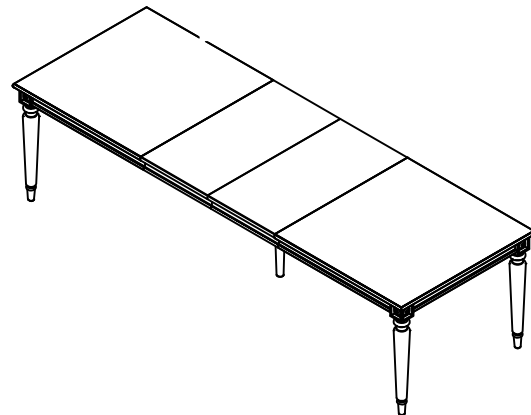
Spanner wrench (supplied, part # F)

BEFORE YOU START:

1. Check the parts against the parts list to make sure all items are present.
2. Assemble your furniture on a soft, flat surface to avoid scratching the finish.
3. **CAUTION:** Do not over tighten screws, nuts or bolts during assembly.
4. Your furniture may require occasional tightening.

INSTRUCTIONS:

1. Lay the table top on a clean and padded surface to prevent scratches, Put the lag bolts of the table leg into the holes on the corner block of table top. Attach legs with Flat Washer (D), Lock Washer (C), Hex Nut (A) and tighten nuts with Wrench (F). (See Figure 1)
2. Attach the horizontal supporter bar to the table top, using bolt (B), Lock Washers(C), Flat Washers (D), tighten with allen key (E). (Figure 2)
3. Insert Bolt on each Support Leg into pre-drilled hole in center of mounting plate, tighten by turning the Support Leg in clockwise. (Figure 3)
4. Unlock the table locks and slide open the table halves. Place the Leaf to the Top. Lock the table locks, which are located on the underside of the table secure the table halves in place. (Figure 4)



No.		Hardware List	Q'ty
A		Hex Nut Ø5/16"	8
B		Bolt Ø5/16xL1-1/2(Ø14)	4
C		Lock Washer Ø5/16"	12
D		Flat Washer Ø5/16"	12
E		Allen key 4mm	1
F		Spanner Wrench 12mm	1

