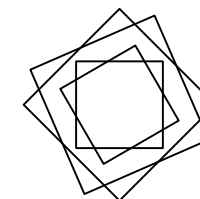
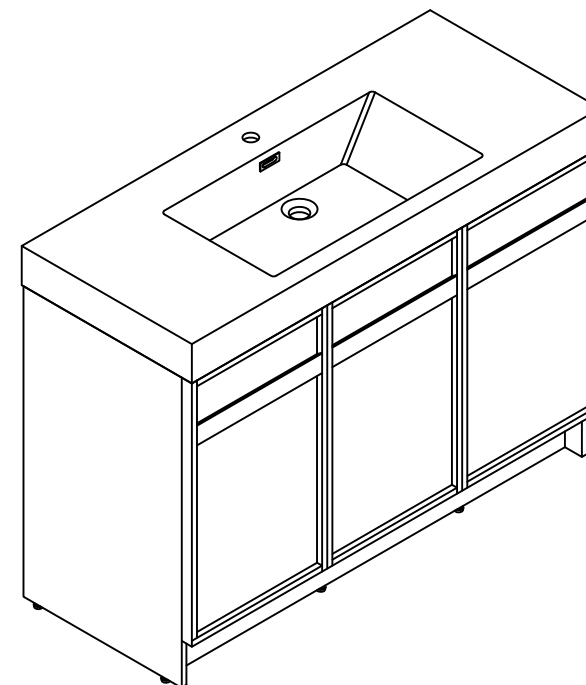


THANKS FOR WATCHING

Your feedback is invaluable to us and we would love to hear about your experience. Please take the time to leave us a review.






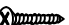




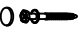






Thank you for shopping with us!

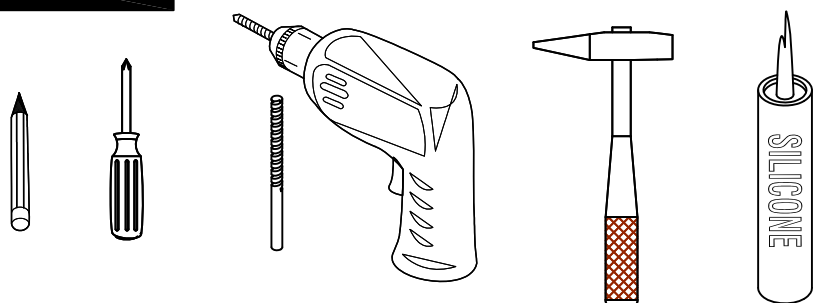
We encourage you to take a few minutes to go through this booklet. It contains important information on installation and care tips to keep your furniture looking as good as new.

Item NO.:BV C11148

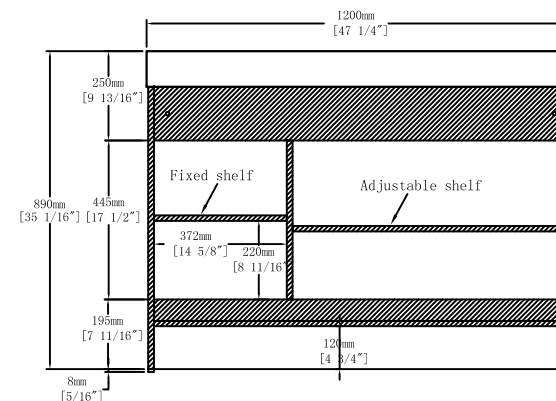
Hardware

NO.	Draw	QTY	NO.	Draw	QTY
A	 Screws Ø4x14mm	56	I	 Hinges (Full cover) - 40 cups	4
B	 Two-in-one connector	36	J	 Hinges (Half cover) - 40 cups	2
C	 Two-in-one connector	36	K	 Screws Ø4x25mm	1
D	 Wood plug	7	L	 Movable laminate support	4
E	 Plastic anchor(Ø10mm)	2	M	 Adjustable feet	6
F	 Screws for fix on the wall	2	N	 Anti-collision gasket	6
G	 Bracket (53x70x44mm)	2	O	 Screwdriver	1
H	 Bracket (19x19x35mm)	2			

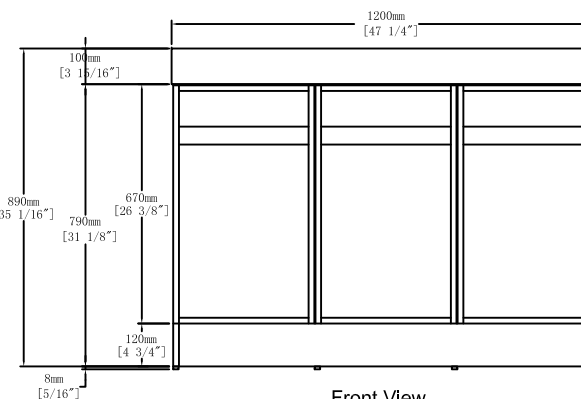
Recommended tools



Dimensions



Back View

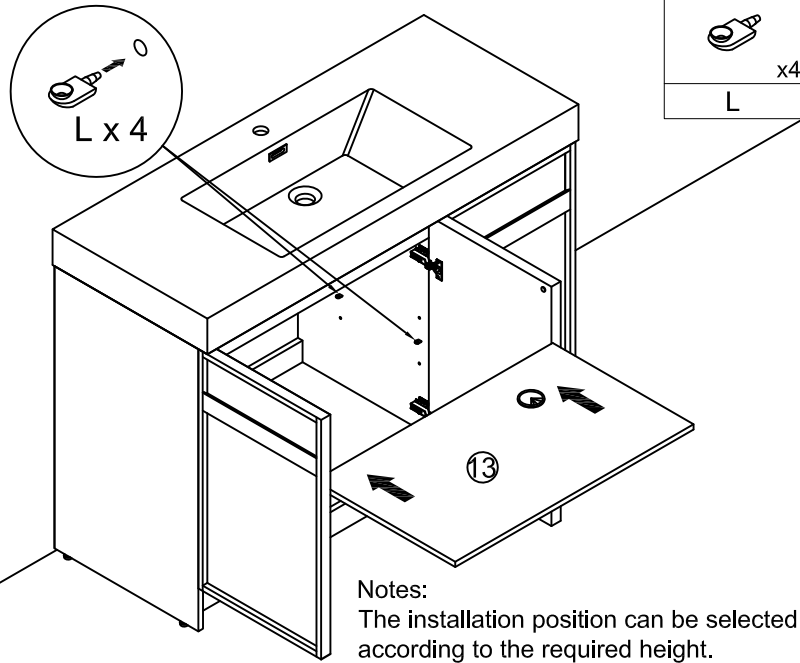


Front View

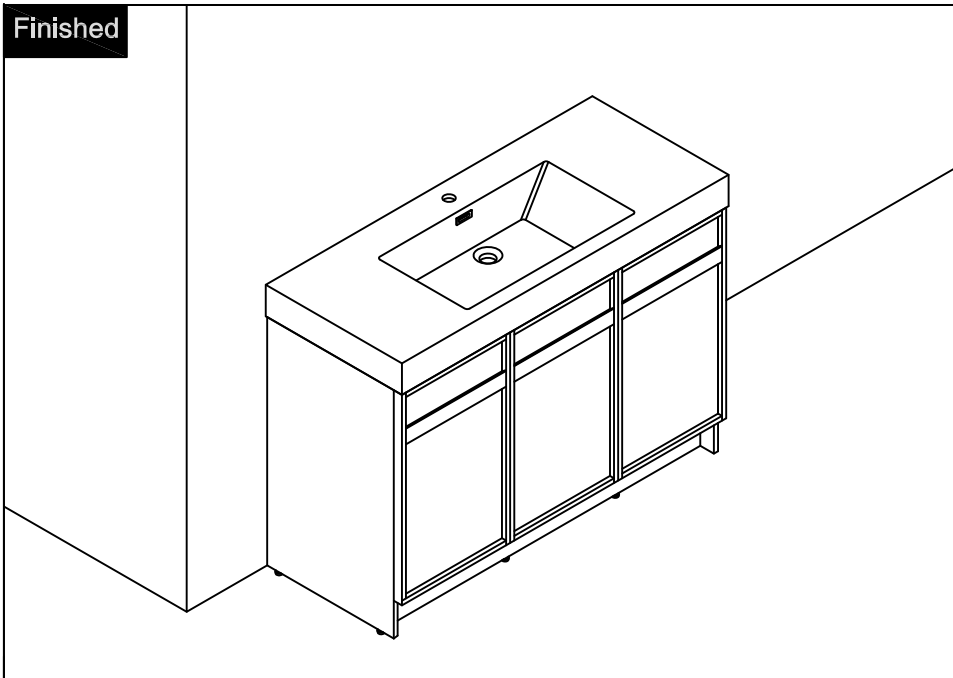
CARE CLEANING AND MAINTENANCE

- 1.Dust regularly with a soft , dry cloth.
- 2.Avoid the use of all chemicals household cleaners, abrasives, or cleaners that contain lemon, vinegar, or other acids that may damage the finish.
- 3.Excessive exposure to sunlight and extreme changes in temperature and moisture can damage wood furniture.
4. The sink is fragile, please pay attention to maintaining its appearance.
- 5.Do not place hot appliances, such as curling irons and hot hair dryers directly on the countertop. Wipe spills immediately.

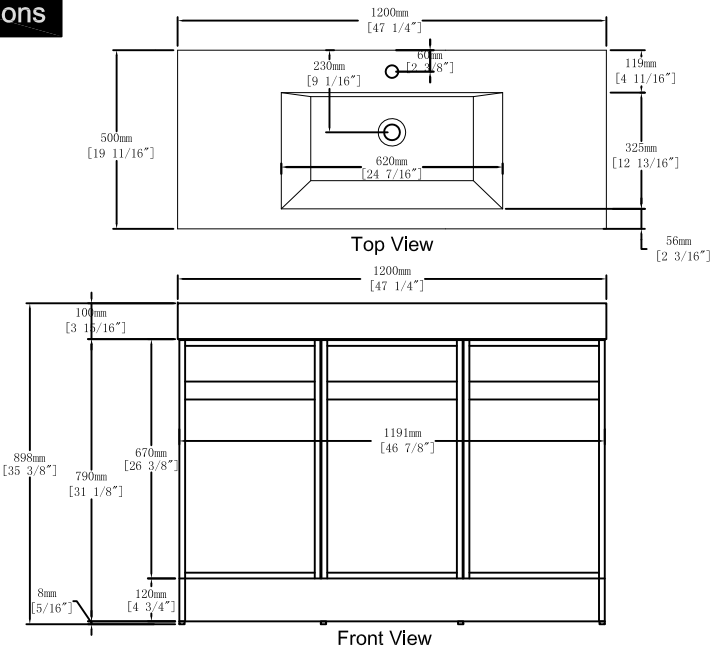
Step 14



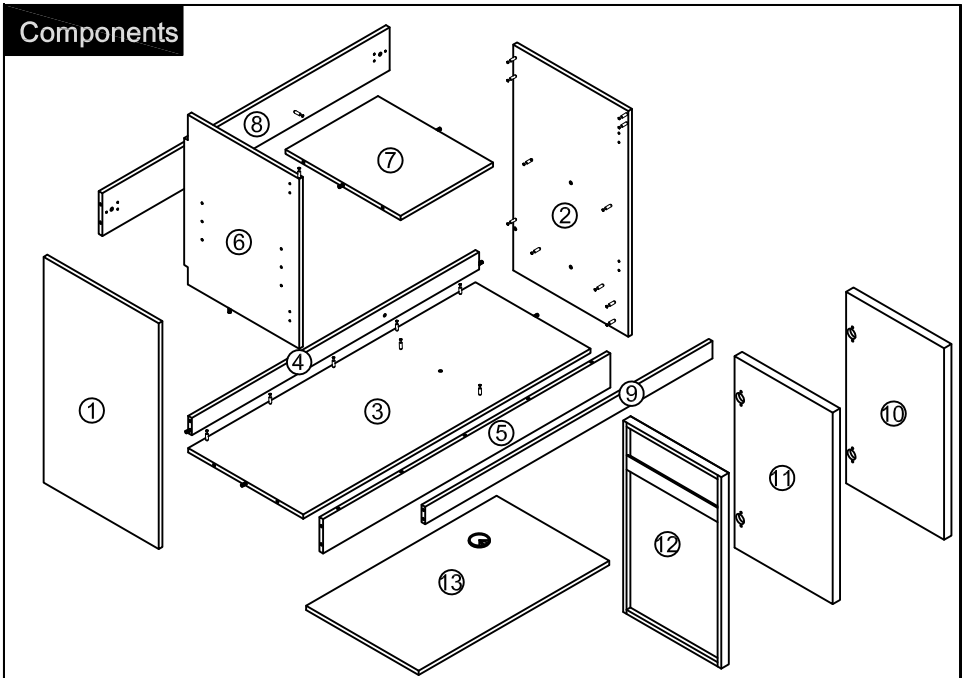
Finished



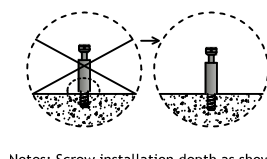
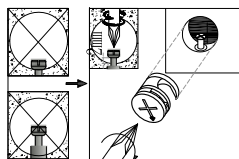
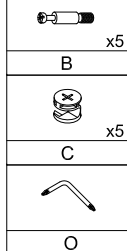
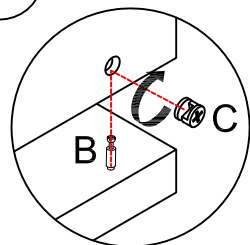
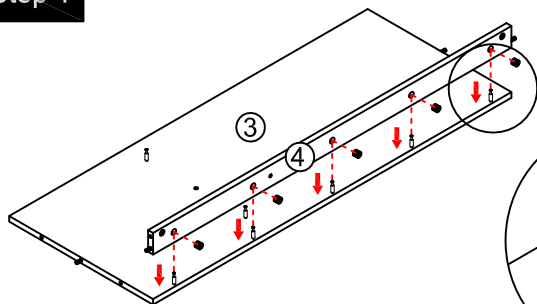
Dimensions



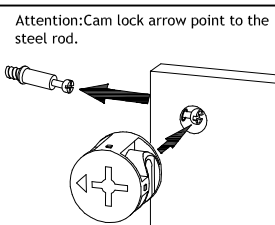
Components



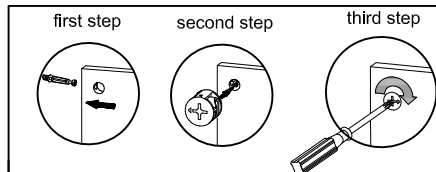
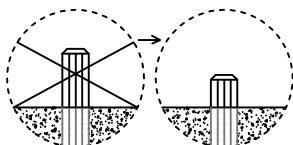
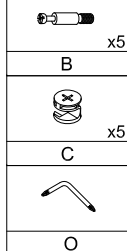
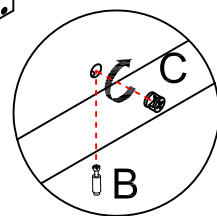
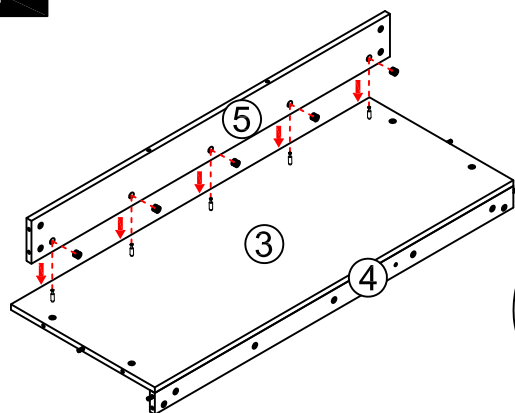
Step 1



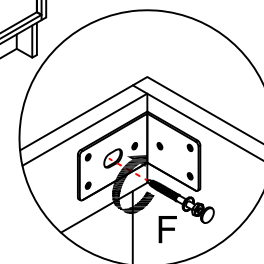
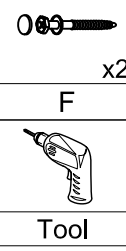
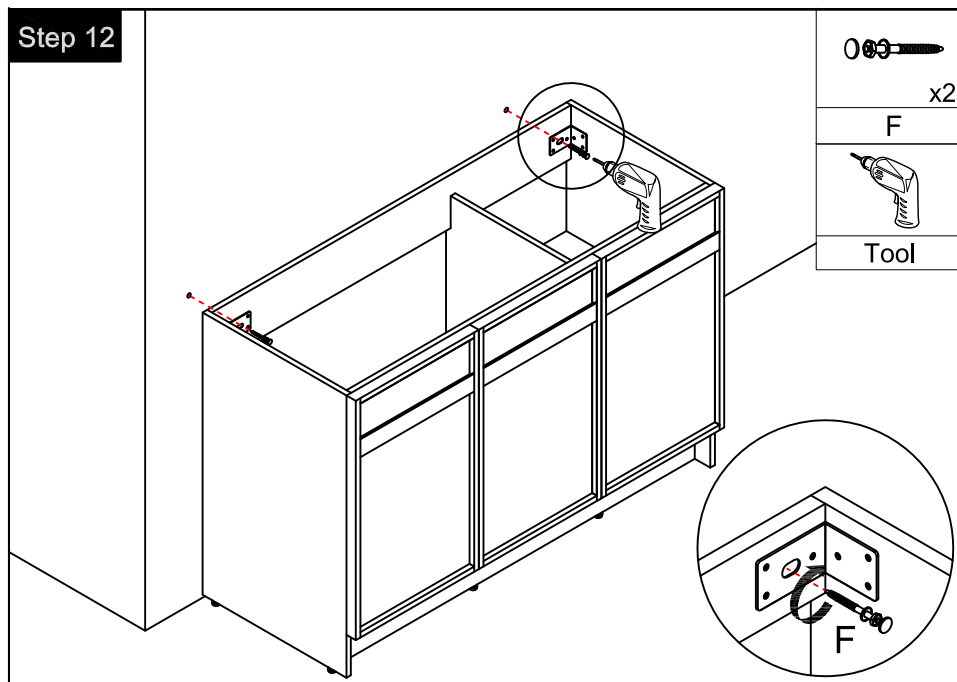
Notes: Screw installation depth as shown



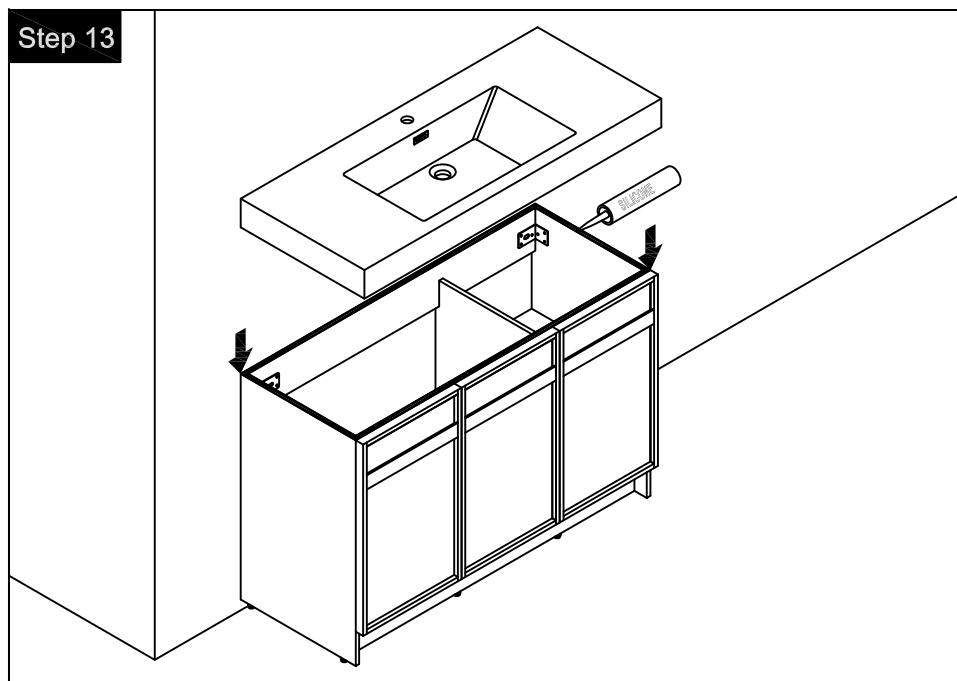
Step 2



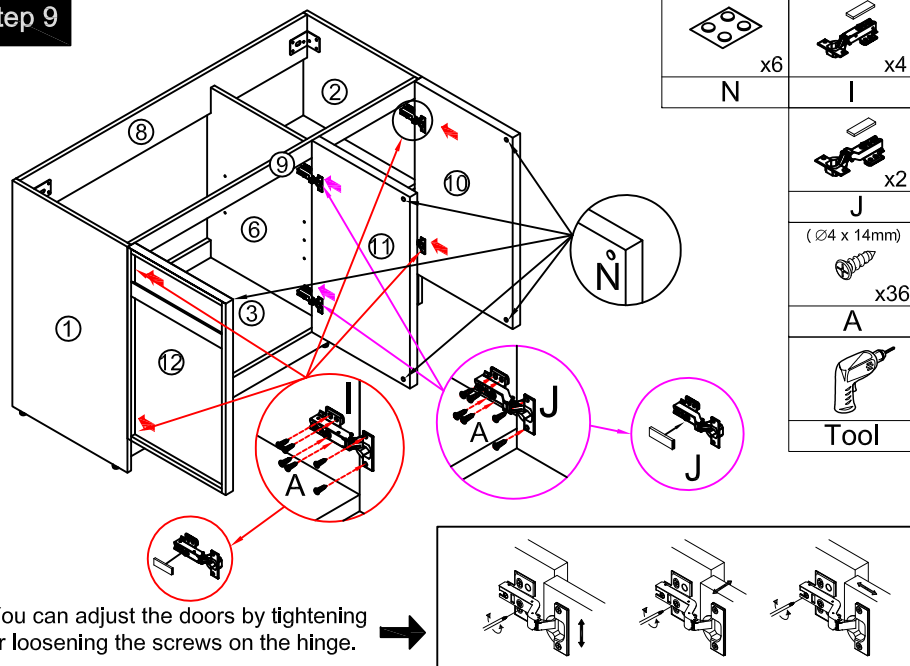
Step 12



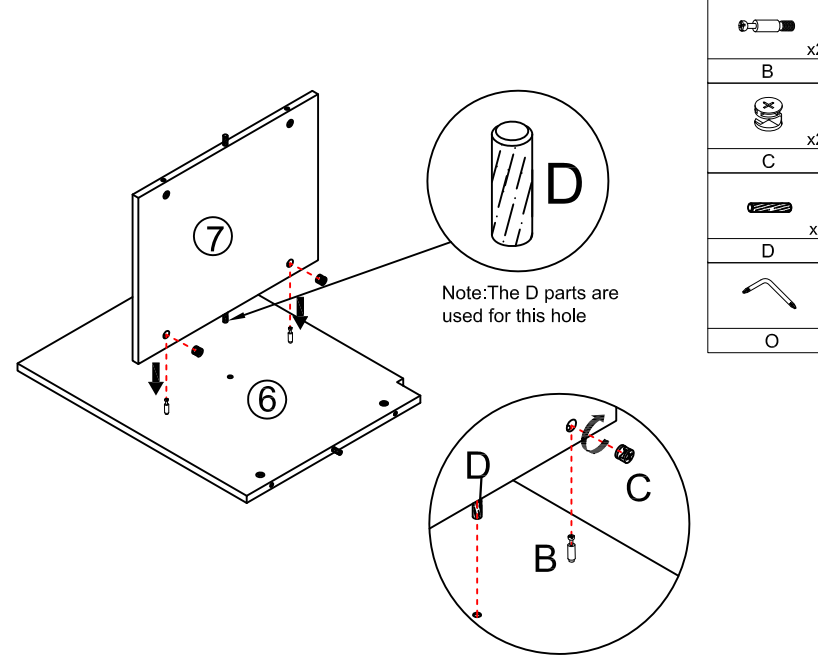
Step 13



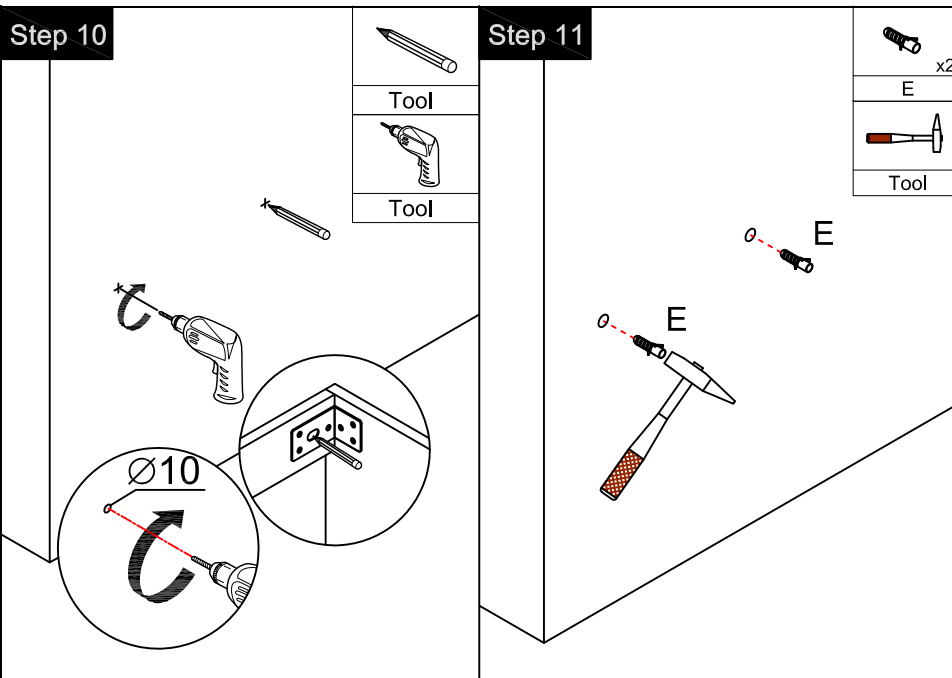
Step 9



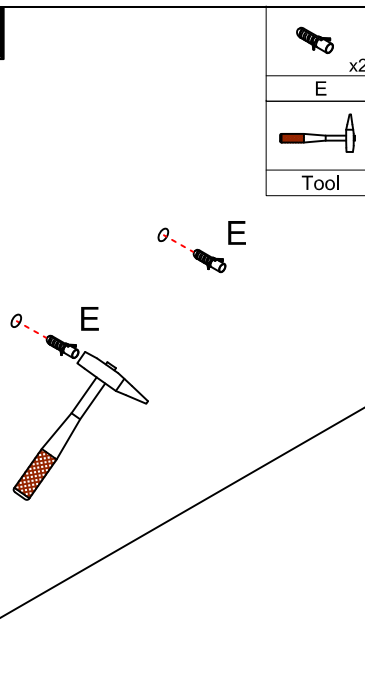
Step 3



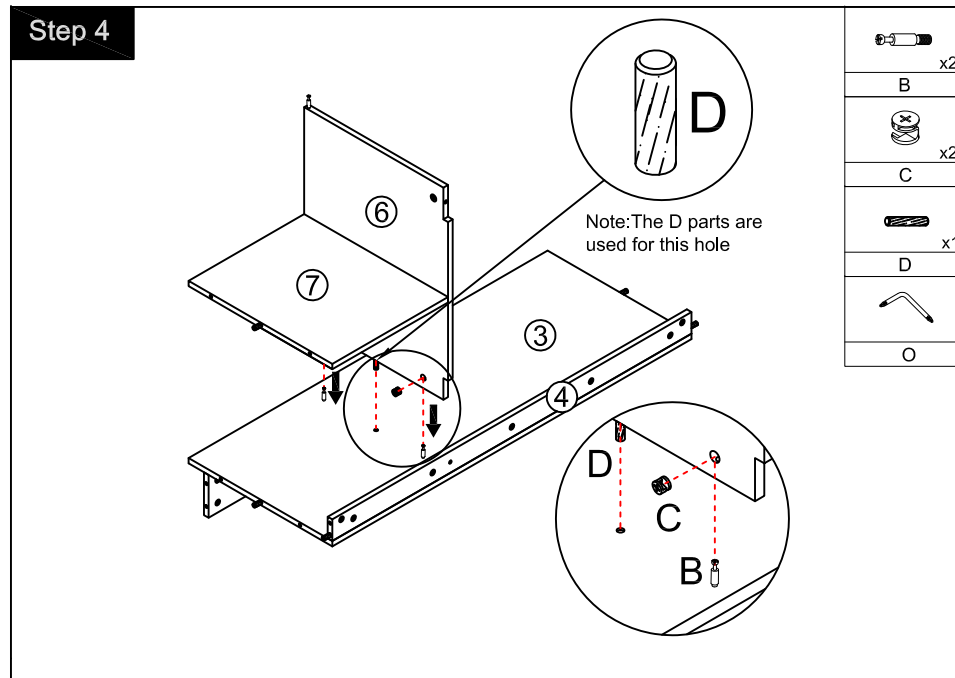
Step 10



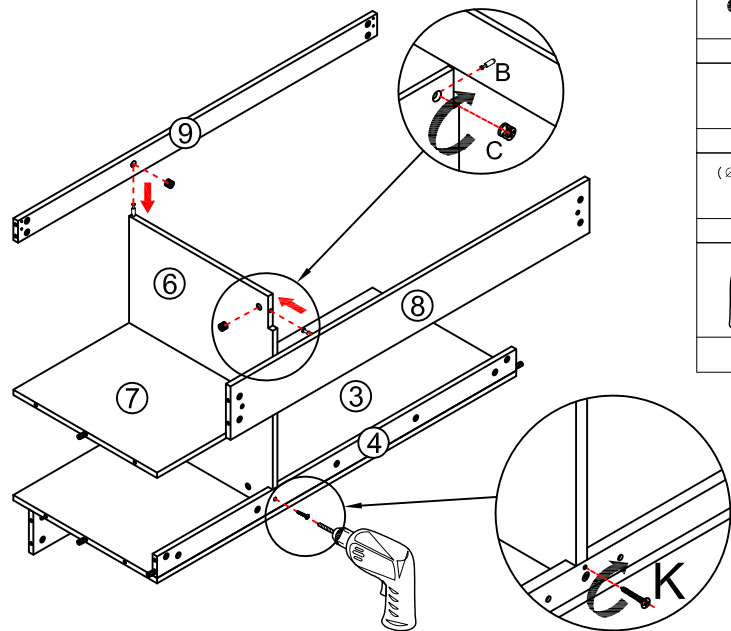
Step 11



Step 4

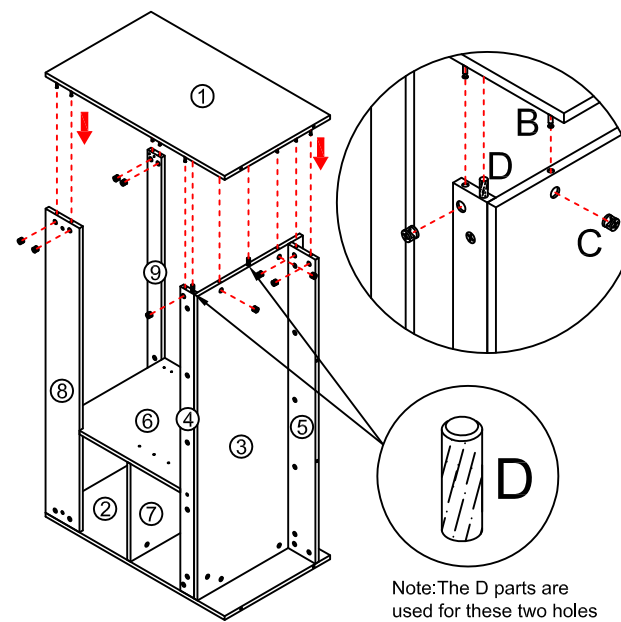


Step 5



	x2
B	
	x2
C	
($\varnothing 4 \times 25\text{mm}$)	
	x1
K	
Tool	

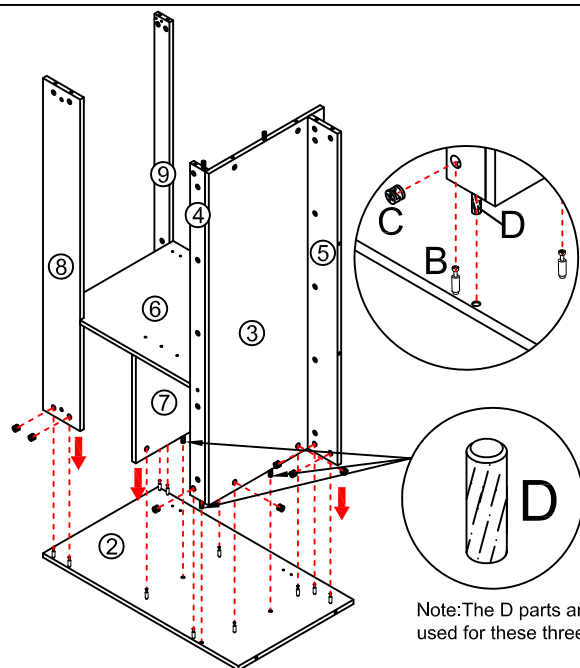
Step 7



Note: The D parts are used for these two holes

	x9
B	
	x9
C	
	x2
D	
O	

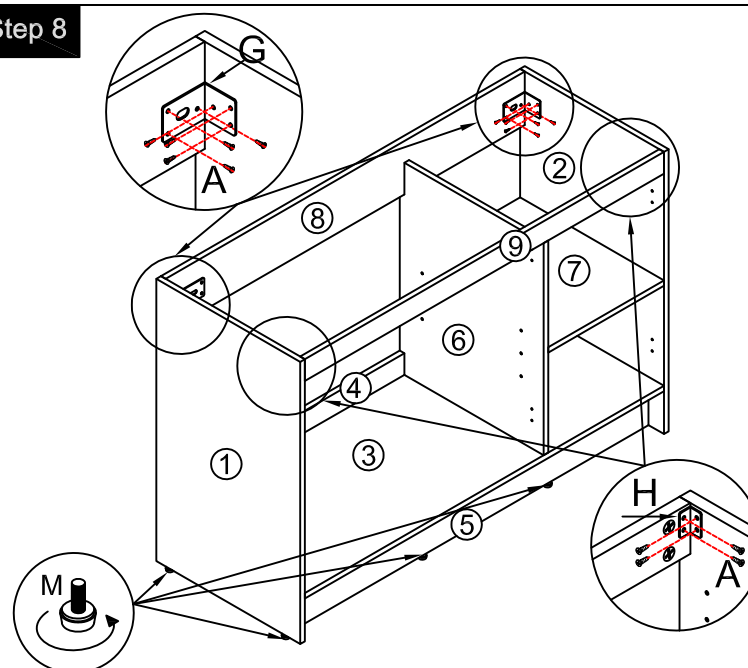
Step 6



Note: The D parts are used for these three holes

	x11
B	
	x11
C	
	x3
D	
O	

Step 8



	x2
G	
	x2
H	
($\varnothing 4 \times 14\text{mm}$)	
	x20
A	
	x6
M	
Tool	