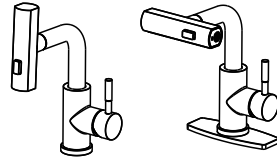


Installation instructions

2341802

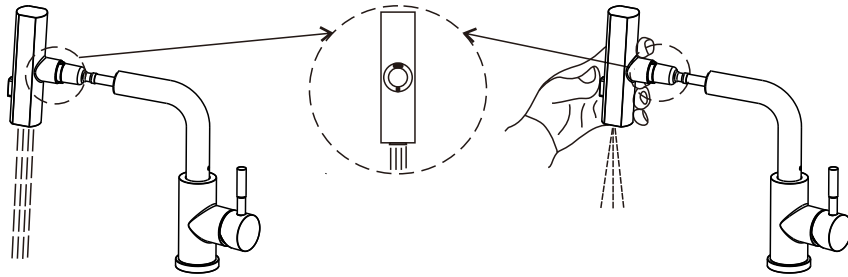
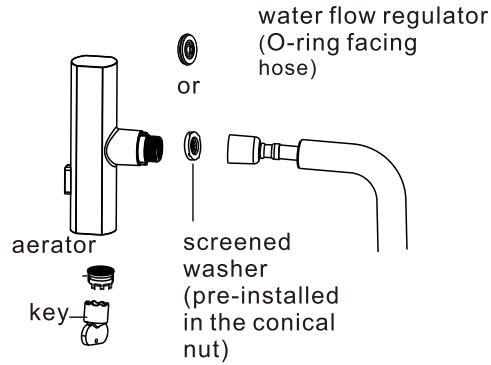
1.2GPM 4.5L/min
1.8GPM 6.8L/min



Used for bathroom basin faucet: With 1.2 gpm are compliant with California water efficiency regulations,
Used for kitchen sink faucet :With 1.8 gpm are compliant with California water efficiency regulations,
Complies with California Proposition 65 and with the Federal Safe Drinking Water Act.

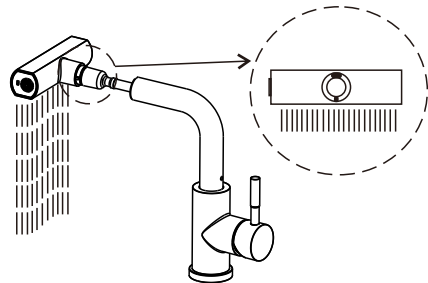
Water Use Information:
basin faucet: 1.2 gpm 4.5L/min ,
kitchen faucet: 1.8 gpm 6.8L/min ,

You can replace the water flow regulator(O-ring facing hose).
In areas with extremely low water pressure causing the faucet water flow regulator to be unsatisfactory, Remove the water flow regulator.



model :Standard Flow Aerator

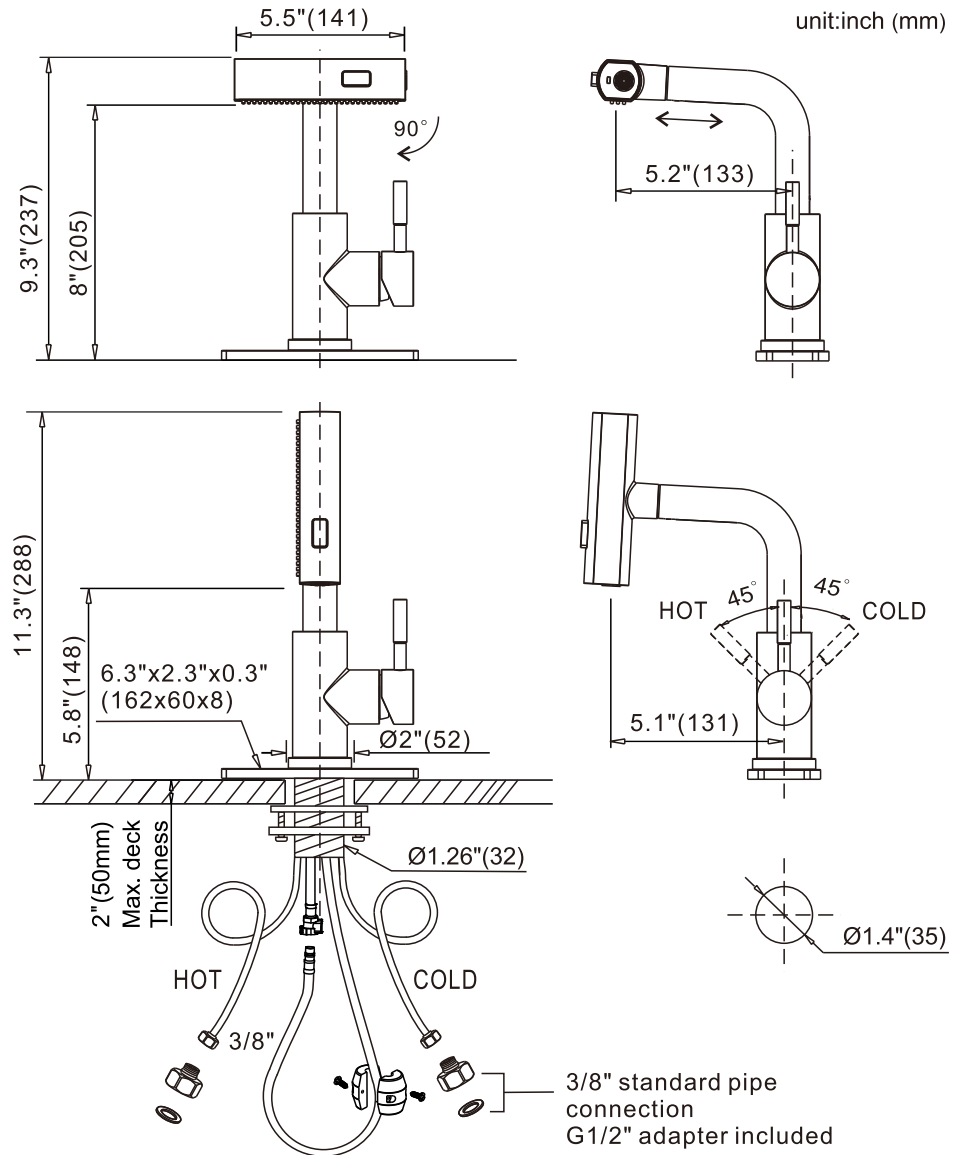
model :Aquablade Sweep



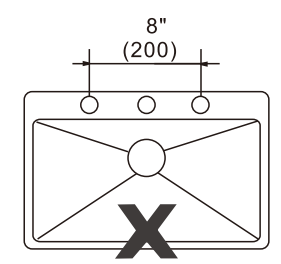
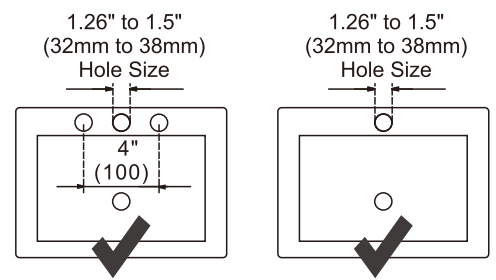
model :Waterfall

There are pins of different sizes at the nozzle interface.
Please correctly insert the nozzle into the swinging pipe of the kitchen faucet, otherwise it will fail.
1. Correctly installed on the swing tube, when the nozzle is placed horizontally, it is in waterfall water outlet mode.
2. Correctly install on the swing tube, rotate the nozzle 90 ° clockwise to switch to Standard Flow Aerator water mode, and press and hold the button to switch to Aquablade Sweep water mode.

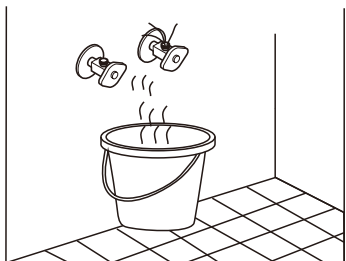
Suggest installing the nozzle on the swing tube before switching modes.



unit:inch (mm)



Before installing the valves, clean the water pipe thoroughly to avoid dirt and deposits.



1

1. Remove the brass lock nut (6) from the thread rod counter-clockwise, remove the washer (5) and washer (3)

2

1. Make sure fasten the thread pipe(3) to the base of the faucet body clock-wise.

3

1. Insert the ring (3) into the pull-down hose (4) and slide it into the thread pipe (2).

4.A

1. Slide tubes down through mounting hole and faucet on sink.
Option: If sink is uneven, use silicone under the gasket.

4.B

Option: If sink is uneven, use silicone under the gasket.

1. Slide 6.3" decorated plate with gasket(2) up over tubes and mounting stud.
Slide tubes down through mounting hole and faucet, 10" decorated plate with gasket(2) on sink.

5

1. Use the triangle fastener(15) when the thickness of sink < 5mm.
2. Place Triangle fastener (15) and washer(4) and metal plate(5) over mounting stud(3) under sink. Secure with mounting nut(6), tighten the screws(7) to fix the faucet body

6

1. Attach pull-out hose (11) on quick connects (9). Press the quick connects firmly.
2. Attach weight ball(16) to pull-out hose (11) Make sure the pull-out hose is not blocking by other objects and not touching the ground. The appropriate height for gravity ball installation is 100mm.
3. Attach supply hot(8) and cool lines(9) .
4. If the angle is G1/2" , please use G3/8" standard pipe connection G1/2" adapter included (12) . Do not over tighten. Turn water back on.

Check for Leaks
Turn on water and check all connections for leaks. Refer back to the appropriate installation instructions and retighten if necessary.

Cleaning and Care
Care should be given to the cleaning of this product. Although its finish is extremely durable, It can be damaged by harsh abrasives or polish. To clean, simply wipe gently with a damp cloth and blot dry with a soft towel.