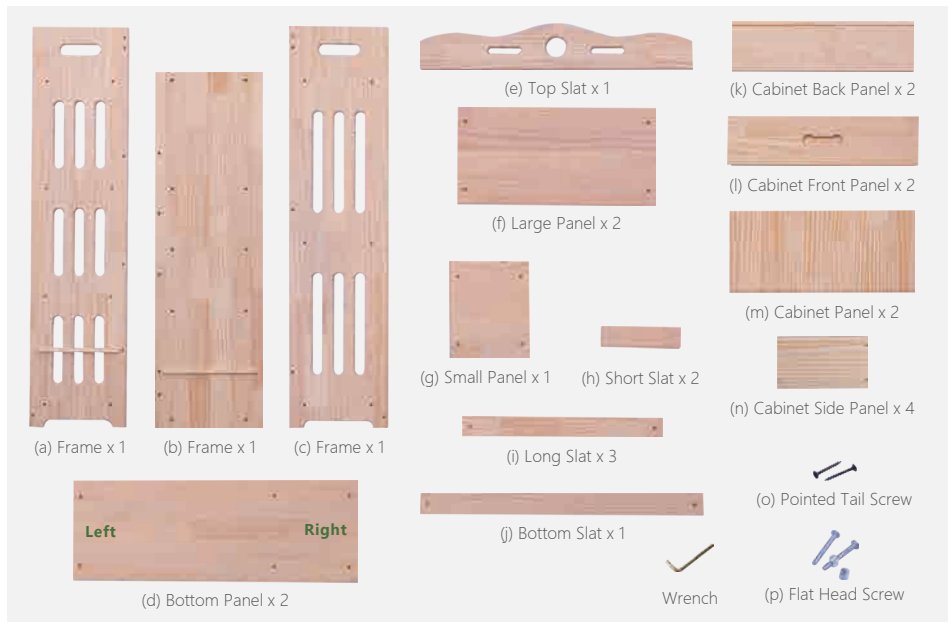


USER GUIDE

BOOKSHELF

Natural / Stylish / Unique

HARDWARE



ATTENTION

- 1 Please always read and follow the assembly, maintenance and operating instruction.
- 2 Do not discard any of the packaging until you have checked that you have all the parts and pack of fittings.
- 3 Keep children away during assembly. This item contains small parts which can be swallowed by children.
- 4 Wipe frames with water gently, do not use bleach, acid, or other solvents.
- 5 Check all hardwares before assembly. Incorrect parts used may lead to damage.



Scan the QR code to view the assembly video.

CABINET ASSEMBLY



- 1 Position Side Panels (n) and Front Panel (l) as picture shown, secure with Pointed Tail Screw (o).

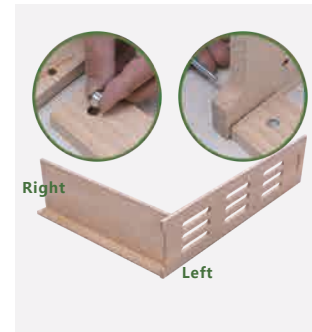


- 2 Position and insert Panel (m) to slot.



- 3 Insert Back Panel (k) to slot as picture shown, secure with Pointed Tail screw (o).

ASSEMBLY INSTRUCTIONS



- 1 Position Frame (a), Bottom Slat (j), and Bottom Panel (d), secure with Flat Head Screws (p).

© 2020-2021 by Pundarika LLC - MoNiBloom.com



- 2 Position and secure Large Panels (f) with Flat Head Screws (p).



- 3 Position and secure Long Slats (i) with Flat Head Screws (p).



- 4 Secure Frame (b) with Flat Head Screws (p).



- 5 Position Short Slats (h) and Small Panel (g), secure with Flat Head Screws (p).



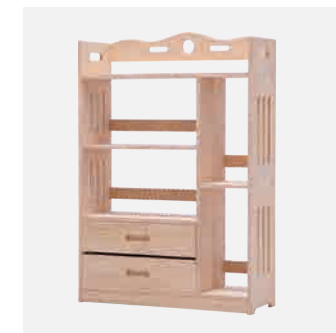
- 6 Position and secure Frame (c) with Flat Head Screws (p).



- 7 Secure Bottom Panel (d) with Flat Head Screws (p).



- 8 Install Top Slat (e) with Flat Head Screws (p).



- 9 Insert cabinets and done.