

HOTEL SPA®

ULTRA-LUXURY HAND SHOWER Convenience Set

Easy Hand-tighten Installation with Advanced Crack-resistant Nylon Connection Nut

Nylon seals better than metal! It can stretch and bend around worn or damaged shower arm threads, yet will not break!

1. Remove old shower head by turning it counter-clockwise. Remove any excess material left on Shower Arm threads. Use steel wool if necessary.
2. Make sure Thick Washer is positioned FLAT and STRAIGHT inside Connection Nut of Bracket (Fig. 1, 4). Hand tighten Connection Nut onto Shower Arm.

WARNING: DO NOT OVERTIGHTEN Connection Nut as it may cause Washer to dislocate and be squeezed into Shower Arm. If leakage occurs, see below.

3. Turn Holder clockwise to position Hose Outlet pointing Down (Fig. 1). If it does not turn, loosen Ball Joint Nut slightly by turning it in CLOCKWISE Direction (Fig. 1), then tighten it back after you are done.
4. Turn on water to check for leakage. If leakage occurs, follow instructions below.
5. Screw Hose with Hose Washer in place onto Hose Outlet (Fig. 2). Screw Handle with Hose Washer in place onto other Hose end (Fig. 3), then insert Handle into Holder (Fig. 5).

Have a Leak? Make your shower 100% leak-free in less than a minute!

Leakage between Bracket and your Shower Arm is caused by Washer inside Connection Nut not pressing evenly against edge of Shower Arm Thread (fig. 1). This is usually the result of Washer not nested correctly. To seal properly, Washer must stay FLAT and STRAIGHT inside Connection Nut (Fig. 4).

You can eliminate this leak by simply re-positioning Thick Washer:

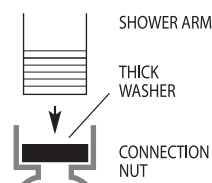
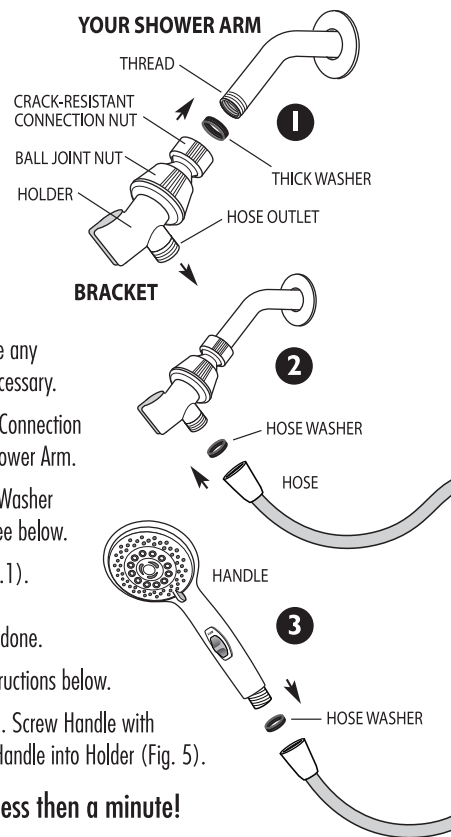
Unscrew Bracket from Shower Arm and adjust position of Washer by a) pushing it down with your finger, or b) using screwdriver or pointed metal tool to press down around Washer edges until it nests completely FLAT and STRAIGHT inside Nut (fig. 4). Once Washer is nested correctly, re-connect Bracket and run water to test.

If Washer is positioned correctly but leak remains, it is likely the result of Damaged Washer Surface or Worn Shower Arm Threads. If you suspect Damaged Washer Surface, using screwdriver or pointed metal tool, pull out Washer from Connection Nut, turn it up-side-down and nest back into Nut (repeat step 2). If the leak is caused by Worn Shower Arm Threads, wrap some Plumber's Tape (included) around Shower Arm threads.

IMPORTANT: Hand tighten connections ONLY. DO NOT use wrench or pliers.

DO NOT overtighten - this may cause washer to bend and be pushed into shower arm. Use plumber's tape ONLY if needed on shower arm thread if Washer fails to stop leakage. DO NOT use plumber's tape on any other connections.

NOTE: If your shower arm has a ball on the end of it instead of thread, it will not work with this shower unit and will need to be replaced with a standard shower arm available at most plumbing supply stores.



To Set Hand Shower Settings & Angle

Turn Dial Lever (Fig. 5) to select desired water pattern. To save water, turn Dial Lever to Economy Rain. To stop water flow, push Handle Switch UP to Pause position. To set angle, loosen Ball Joint Nut and Rotate Holder to desired position, then tighten Ball Joint Nut.

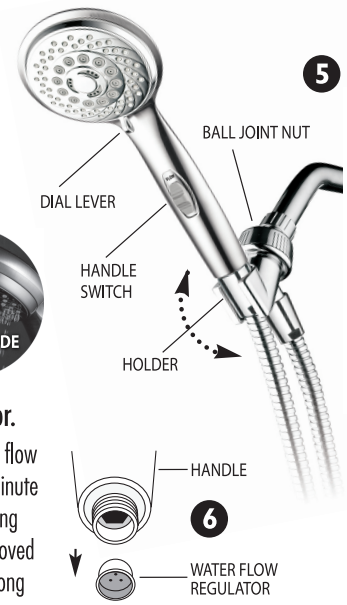
Pause mode does not shut off water completely? It is designed this way for your protection.

For safety (to prevent pressure buildup), Pause mode has water dripping instead of complete shut-off. After use, DO NOT leave hand shower set to Pause mode.



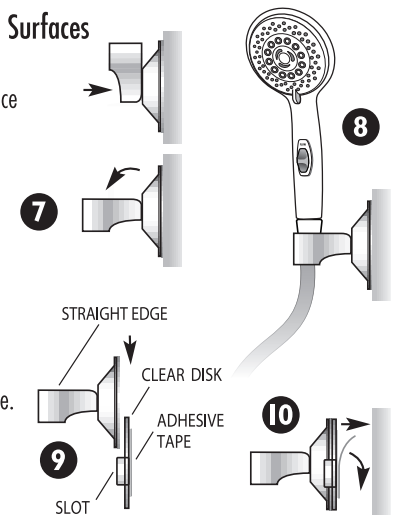
Low Water Pressure? You can remove Water Flow Regulator.

As mandated by U.S. federal law, this hand shower is equipped with water flow regulator that limits maximum water flow to 2.5 gallons (9.5 liters) per minute at 80 psi water pressure. In areas with extremely low water pressure causing the shower water flow to be unsatisfactory, the flow regulator may be removed to improve the water flow in the shower head. Using screwdriver point or long nose pliers, pull out Water Regulator located inside Shower Handle (fig. 6).



To Mount Low-Reach Bracket with Suction on Polished Surfaces

1. Clean and dry surface. Wet and press suction pad back of Bracket against wall tile, shower doors, bathtub side or other smooth surface (Fig. 7), then pull down Holder until it snap locks onto surface.
2. Insert Hand Shower with Hose into Holder (Fig. 8). To Remove Bracket, lift Holder back up, until suction is released.



To Mount Low-Reach Bracket with Adhesive Disk on Rough and Textured Surfaces

1. Connect Bracket with locked Holder to Clear Disk by sliding it into Slots (Fig. 9). Make sure straight edge is on TOP.
2. Clean and dry surface. Make sure air is free of steam and moisture.
3. Remove back of Adhesive Tape on Clear Disk (Fig. 10).
4. Press Bracket assembly firmly against surface. Allow 12 hours for adhesive to set hold before using in wet conditions.

If you have installation problem or missing parts, please DO NOT return this product before calling us first. We can easily solve it on the phone or by quickly sending needed parts.

For Questions on Installation or Part Replacement Call Toll Free

1-888-869-4010

Monday - Friday 9:00 AM - 4:00 PM Eastern Time

ipshowers.com

Interlink Products International, Inc. 1315 E. Elizabeth Ave., Linden, NJ 07036

ITEM 1450

LIFETIME LIMITED WARRANTY

Interlink will repair or replace any of this product's parts that exhibit defects in workmanship or materials for above stated period from date of purchase. If malfunction occurs, send only defective part(s) with proof of purchase to Customer Service Department at the address listed below. Your warranty does not cover malfunction or damage due to accident, misuse, or failure to follow any written instructions accompanying this product.

US Patent No. 7,527,231,B2 Made in China