

## Tools Required for Assembly: (Not Included)

- Pencil
- Mallet hammer
- Phillips head screwdriver



For **Tile**: • Electrical drill with 1/4 in. drill bit

For **Drywall**: Electrical drill with 5/16 in. drill bit

## Helpful Tools: (Not Included)

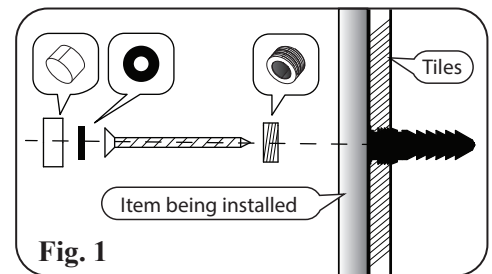
- Level
- Safety glasses

## Installation Instructions

### Tiles

**! CAUTION:** Tile anchors are for tile, granite, marble, cement surfaces only. Use drywall anchors for drywalls only.

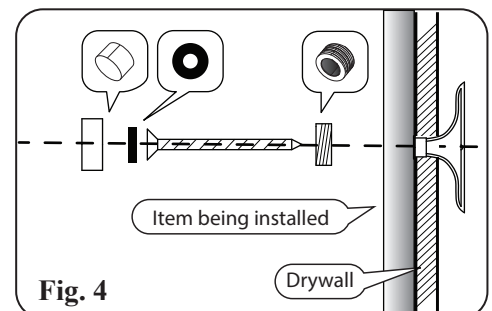
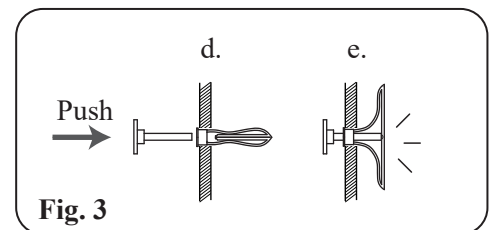
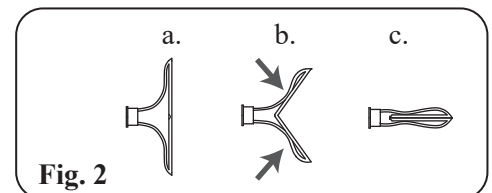
1. Hold the item up against desired position on wall, and mark the screw holes. Use a measuring tape and a level for accuracy.
2. Remove the item and drill pilot holes into the tiles where the tile anchors will be inserted using 1/4 in. Masonry drill bit.
3. Insert tile anchors into the hole.
4. Place the item over the tile anchors and place mounting kits in the order shown in **Fig.1**. Tighten screw, then tighten cap over the screw.



### Drywall

**! CAUTION:** Drywall anchors are for 1/2" drywall only.

1. Hold the item up against desired position on wall, and mark the position of screw holes. Use a measuring tape and a level for accuracy.
2. Remove the item, and drill 5/16 in. pilot holes into the wall where the drywall anchors will be inserted.
3. Pinch drywall anchor's two wings together (Fig. 2), and insert it into the hole horizontally. Tap flush with the wall using a mallet hammer.
4. Insert the red push pin into the drywall anchors until the wings pop open. (Fig. 3) Then remove the pin. Do not tap the red push pin with a hammer.
5. Place the item over the drywall anchors. Insert mounting screws, and place mounting kits in the order shown in **Fig.4**. Tighten screw, then tighten cap over the screw. (Fig. 4)



## Care and Maintenance

To maintain the beautiful luster finish, please use soft damp cloths when cleaning and never use any cleaning solvents.