

courant.
by IMPECCA

Electric Knife

Carve Meats, Bread, Cheese and More!



CEK-9110K

info@impecca.com

866-954-4440

www.courantusa.com



CEK9110K

Electric Knife

Carve Meats, Bread, Cheese and More!

FEATURES

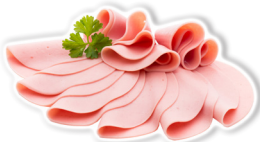
SMART DESIGN Soft, Lightweight and Ergonomically Designed handle fits comfortably in either hand and gives you accurate control and precision.

UNIVERSAL Ideal for Carving Meats, Poultry, Slicing Cheese, Bread, or any DIY Crafting such as Foam & more

POWERFUL Light weight yet equipped with a 110 Watt motor

SIMPLE TO USE Press and Hold the ON switch to safely use the knife. The knife will automatically turn off when released.

QUALITY Stainless Steel Blades are removable Dishwasher safe. Power Cord length is 60 Inches



Sous chef's solution for gourmet serving & entertaining

CEK-9110K



8 10941 02656 0

1 YEAR

limited warranty