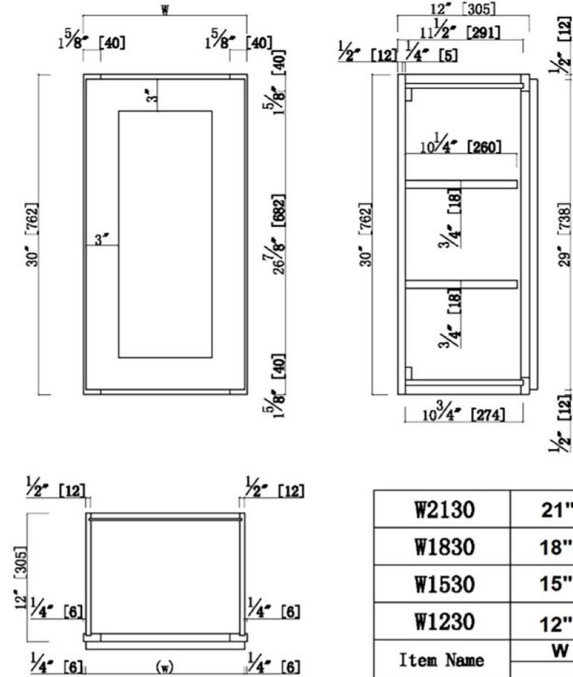


# ASSEMBLED KITCHEN CABINETS

## Wall Kitchen Cabinet 15x30x12 White



<b>W2130</b>	<b>21"</b>	<b>20.5"</b>
<b>W1830</b>	<b>18"</b>	<b>17.5"</b>
<b>W1530</b>	<b>15"</b>	<b>14.5"</b>
<b>W1230</b>	<b>12"</b>	<b>11.5"</b>
<b>Item Name</b>	<b>W</b>	<b>(w)</b>

## SPECIFICATIONS

<b>MATERIAL CONSTRUCTION:</b>	Wood
<b>WOOD SPECIES:</b>	Maple
<b>ASSEMBLED DIMENSIONS:</b>	30" H x 15" L x 12" D
<b>ASSEMBLED WEIGHT:</b>	23 lbs.
<b>KITCHEN CABINET TYPE:</b>	Wall
<b>MOUNTING TYPE:</b>	Wall Mount
<b>CONSTRUCTION TYPE:</b>	Face Frame
<b>HINGE STYLE:</b>	Soft Close
<b>DOOR STYLE:</b>	1 HDF shaker door, reversible
<b>NUMBER OF DRAWERS:</b>	0
<b>DRAWER DIMENSIONS 1:</b>	N/A
<b>DRAWER DIMENSIONS 2:</b>	N/A
<b>DRAWER DIMENSIONS 3:</b>	N/A
<b>DWR BOX MATERIAL:</b>	N/A
<b>DWR CONSTRUCTION:</b>	N/A
<b>DWR GLIDE:</b>	
<b>FAKE DWR QTY:</b>	0
<b>FAKE DWR LOCATION:</b>	N/A

<b>NUMBER OF SHELVES:</b>	2
<b>SHELF STYLE:</b>	Flat
<b>ADJUSTIBLE SHELVES:</b>	Yes
<b>SHELF ADJUSTIBILITY INCREMENTS:</b>	2.5"
<b>SHELF DIMENSIONS:</b>	13.5" W x 10.25" D
<b>SHELF THICKNESS:</b>	0.75"
<b>SHELF MATERIAL:</b>	Plywood
<b>FACE FRAME MATERIAL:</b>	Solid Maple
<b>SIDES MATERIAL:</b>	Plywood
<b>BOTTOM MATERIAL:</b>	Plywood
<b>BACK PANEL MATERIAL:</b>	Plywood
<b>BACK BRACE MATERIAL:</b>	Wood
<b>TOE KICK INSET WIDTH:</b>	N/A

<b>WARRANTY:</b>	1-Year limited warranty
<b>LEGAL FOR SALE IN CALIFORNIA:</b>	Yes
<b>CARB COMPLIANT:</b>	CARB Phase 2
<b>TSCA TITLE VI COMPLIANT:</b>	Yes

