

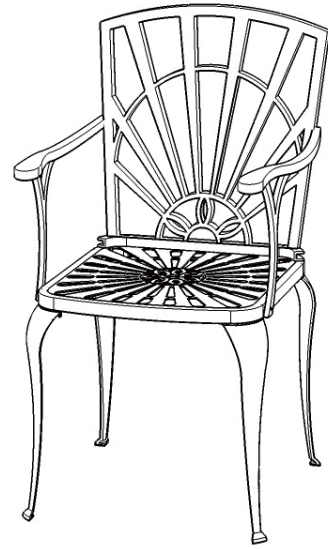
# Arm Chair

## IMPORTANT NOTE

This product is made from sturdy, high quality aluminum and will provide years of enjoyment. Do not use power tools to assemble and only tighten bolts until they are snug.

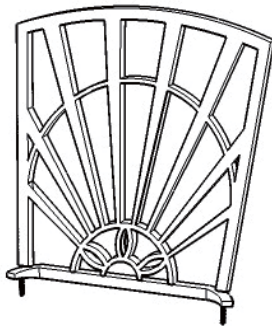
Carefully remove all the parts from the carton and put them individually on a soft cloth to prevent scratches or other damage occurring to the parts.

We have taken great care in the design of this product and request that you carefully and strictly follow our assembly instructions to ensure a completed product as it was designed.

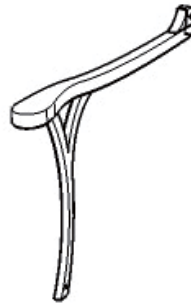


## Part List

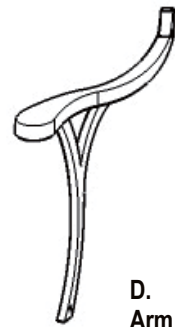
**A.  
Back**  
1 pc.



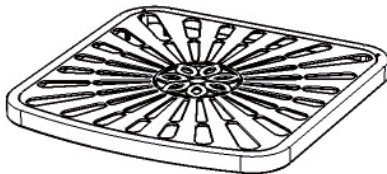
**C.  
Arm**  
1 pc.



**D.  
Arm**  
1 pc.



**B.  
Seat**  
1 pc.



**E.  
Leg**  
4 pcs.



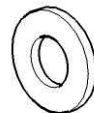
## Hardware List



**Key Wrench (large)**  
1 pc.



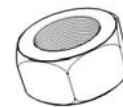
**M8x30 Bolt**  
8 pcs. (+1 extra)



**Flat Washer (large)**  
10 pcs. (+1 extra)



**Spring Washer (large)**  
10 pcs. (+1 extra)



**Nut (large)**  
10 pcs. (+1 extra)



**Nut Cap (large)**  
10 pcs. (+1 extra)



**Key Wrench (small)**  
1 pc.



**M6x30 Tapered Bolt (long)**  
2 pcs. (+1 extra)



**M6x25 Tapered Bolt (short)**  
2 pcs. (+1 extra)



**Flat Washer (small)**  
4 pcs. (+1 extra)



**Spring Washer (small)**  
4 pcs. (+1 extra)



**Nut (small)**  
4 pcs. (+1 extra)



**Nut Cap (small)**  
4 pcs. (+1 extra)

**Tools required for assembly : Phillips screwdriver and Slotted screwdriver**

## IMPORTANT

- \* Please keep Key Wrench in a safe place as you may need to tighten up the Nuts in the future.
- \* Use a soft cloth between these parts and the floor.
- \* Do not use power tools to assembly and do not tightening the bolts and nuts.
- \* Do not tighten up all the bolts and nuts until each part is properly assembled.

## STEP 1

Place Seat (B) upside down on a soft cloth.

Insert Bolts into pre-drilled holes of Seat (B).  
(See Figure 1)

Attach Legs (E) to Seat (B) with Flat Washers (large), Spring Washers (large), Nuts (large) and Nuts Caps (large). (See Figure 2)

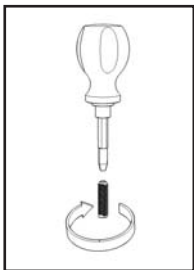


Figure 1

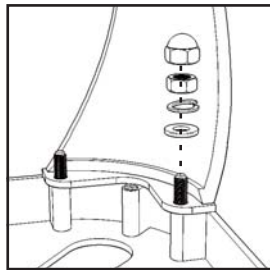
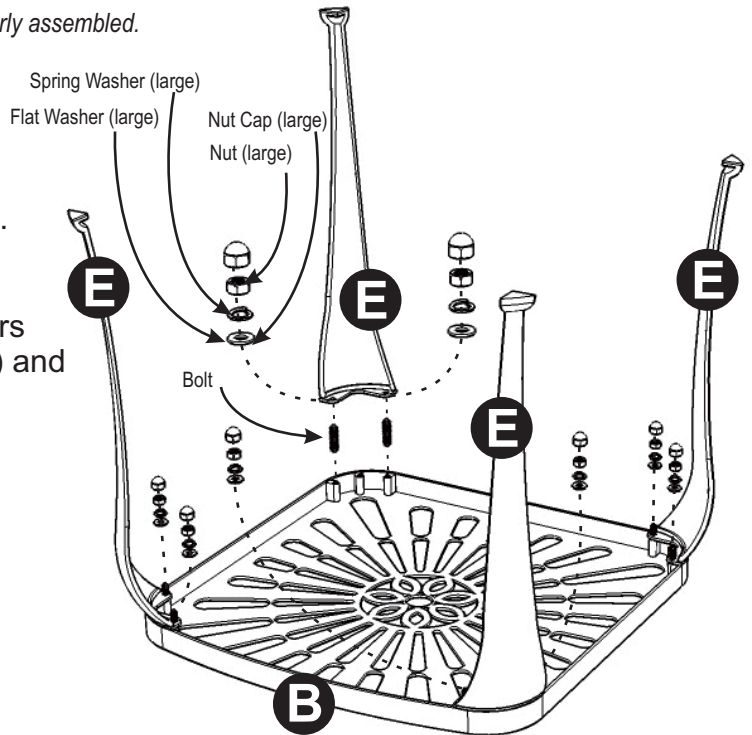


Figure 2



## STEP 2

Turn unit over to its' upright position.

Attach Back (A) to unit with Flat washers (large), Spring Washers (large) Nuts (large) and Nut Caps (large).

Attach Arms (C) and (D) to unit with Tapered Bolts (short), Tapered Bolts (long), Flat Washers (small), Spring Washers (small), Nuts (small) and Nut Caps (small).

