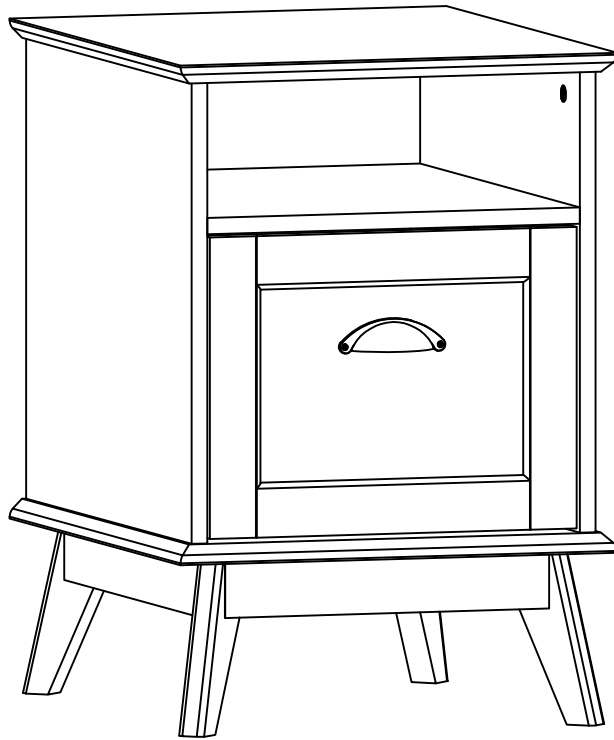


FILE CABINET



ASSEMBLY INSTRUCTIONS

Any questions or issues please contact us

Dear Valued Customers:

On behalf of our entire team, I'd like to take this opportunity to welcome you as our new customer. I hope you are enjoying your recent purchase. I am thrilled to have you with us.

We pride ourselves on providing the best quality products to our customers. Our customers are the most important part of our business, and we work tirelessly to ensure your complete satisfaction.

If, for any reason, you are not completely satisfied with your purchase, I will be your primary contact and I encourage you to email or call me at any time with your questions and comments so that I can address your concerns as soon as possible.

I can be reached during regular business hours the following way:

- Email
- Phone

I would be very grateful if you could spare a few minutes to leave a product review. By doing so, you'll give millions of fellow shoppers vital information to help them make the right purchase decision in the future. I deeply appreciate your honest review of the product.

Thank you again and Have a lovely day!

Sincerely,

Director of the Customer Care Team

Table of Contents

Part Identification	2
Hardware Identification	3
Assembly Steps	4-19
Safety	20-22
Warranty	23

Assembly Tools Required



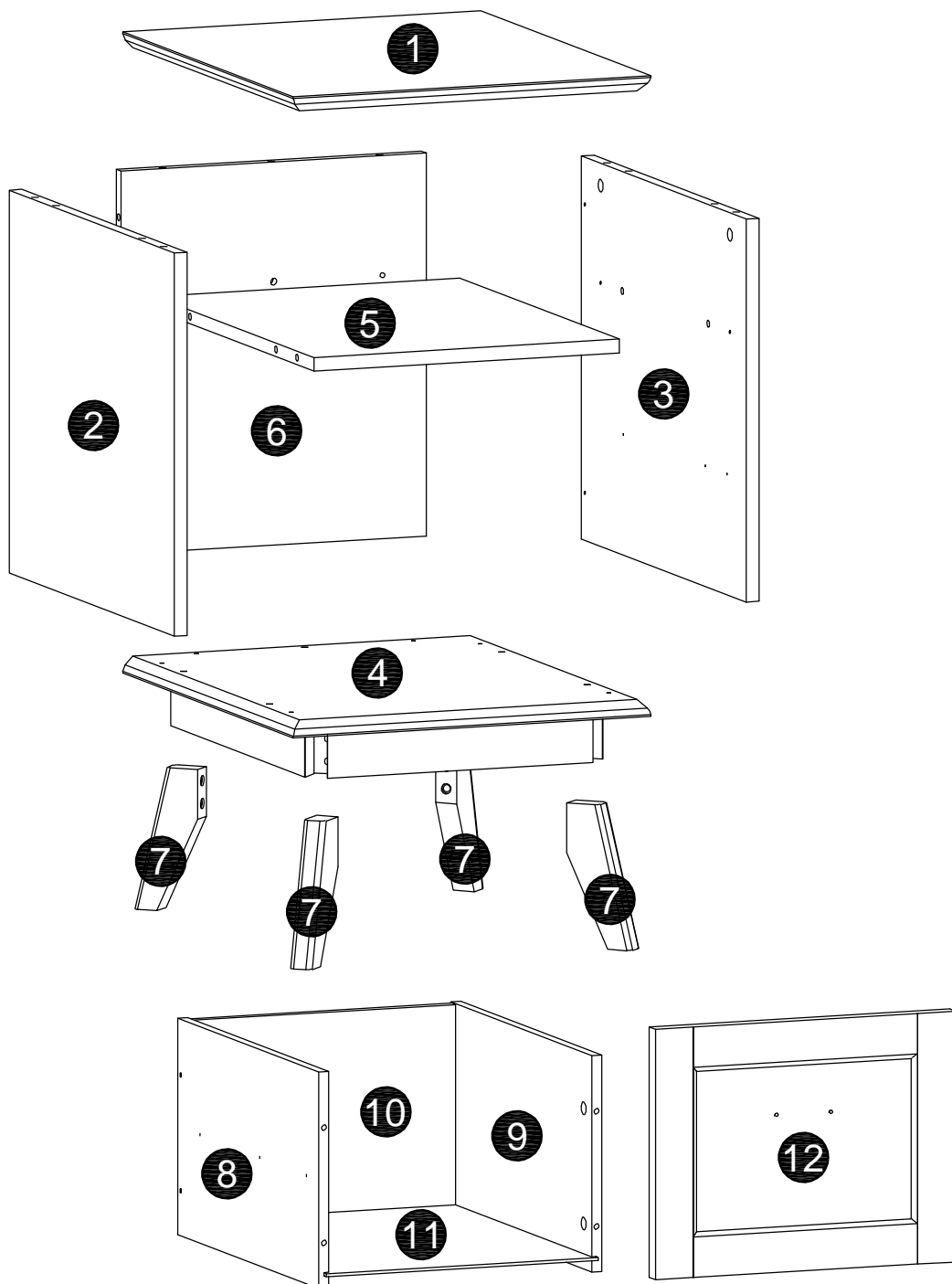
No. 2 Phillips Screwdriver
Tip Shown Actual Size



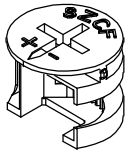
Skip the power trip.
This time.

Part Identification

- | | |
|-------------------------|--------------------------|
| 1. TOP (1) | 9. RIGHT DRAWER SIDE (1) |
| 2. LEFT END (1) | 10. DRAWER BACK (1) |
| 3. RIGHT END (1) | 11. DRAWER BOTTOM (1) |
| 4. BOTTOM (1) | 12. DRAWER FRONT (1) |
| 5. SHELF (1) | |
| 6. BACK (1) | |
| 7. LEG (4) | |
| 8. LEFT DRAWER SIDE (1) | |



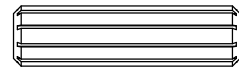
Hardware Identification



A.HIDDEN CAM - 14+1



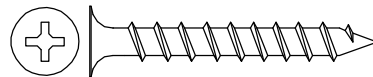
B.CAM SCREW - 14+1



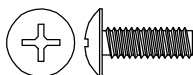
C.WOOD DOWEL - 17+1



D. 1/2" PAN HEAD SCREW - 12+1



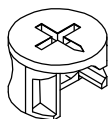
E. 1-1/2"FLAT HEAD SCREW - 12+1



F. 1/2" MACHINE SCREW - 2+1



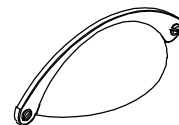
G. 1-3/4" MACHINE SCREW - 8+1



H.HIDDEN CAM - 4+1



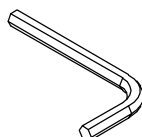
I.CAM SCREW - 4+1



J.PULL - 1



K.FELT FEET - 4



L.WRENCH - 1



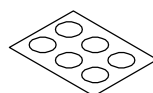
M.WASHER - 8



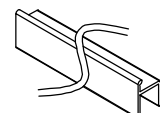
N.LOCK WASHER - 8



O.1/16" EXTENSION RAIL - 2



P.APPLIQUE CARD - 3

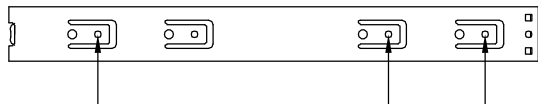


Q.FILE GLIDE - 2



R.FILE HANGER - 2

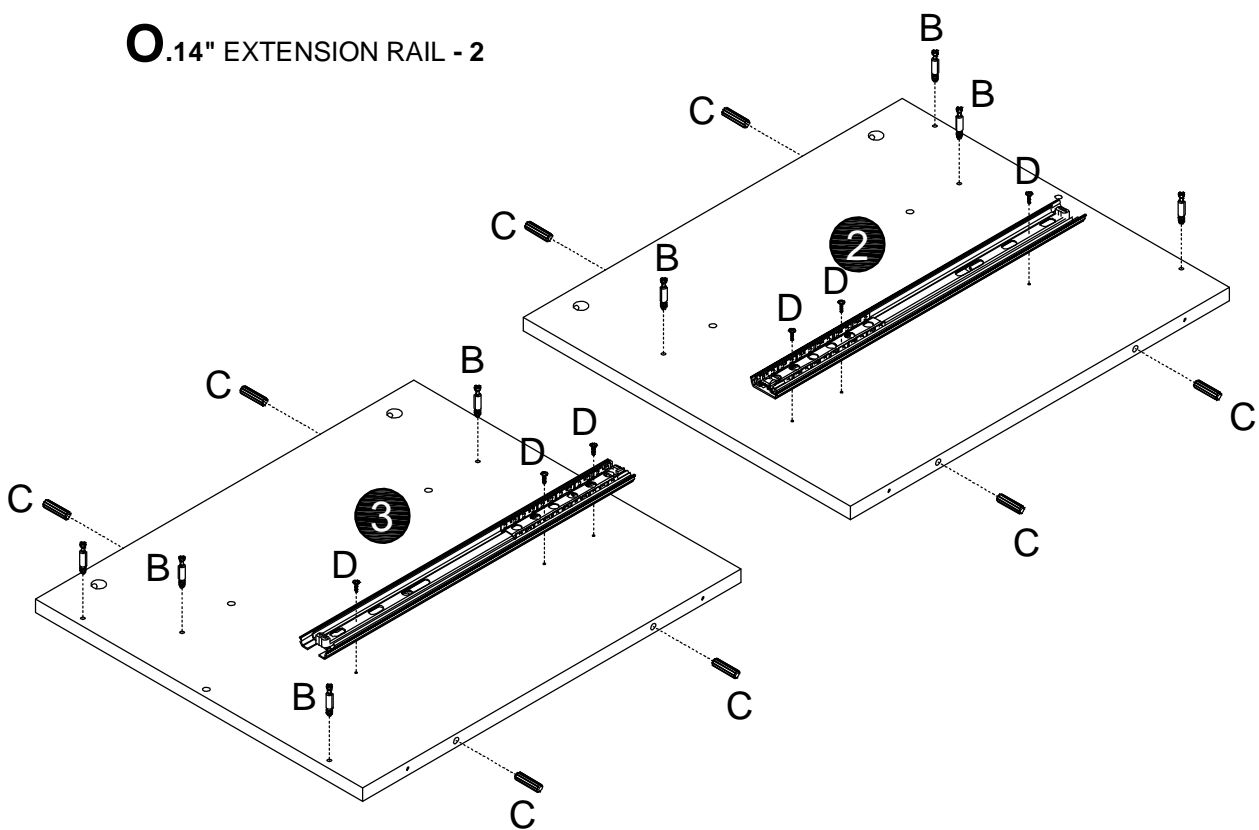
STEP 1



O. 1/4" EXTENSION RAIL - 2



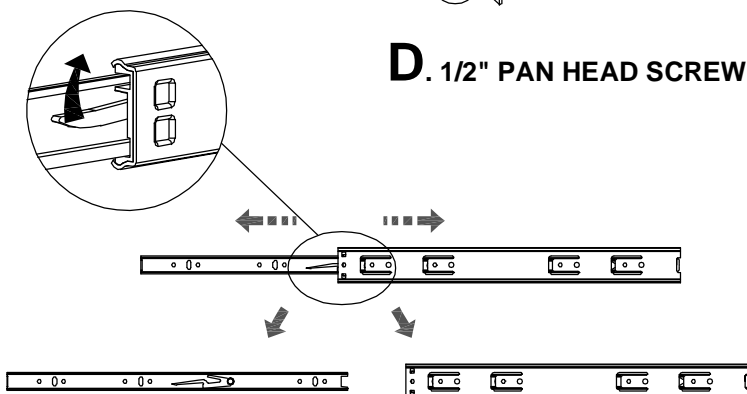
C. WOOD DOWEL - 8



D. 1/2" PAN HEAD SCREW - 6



B. CAM SCREW - 8

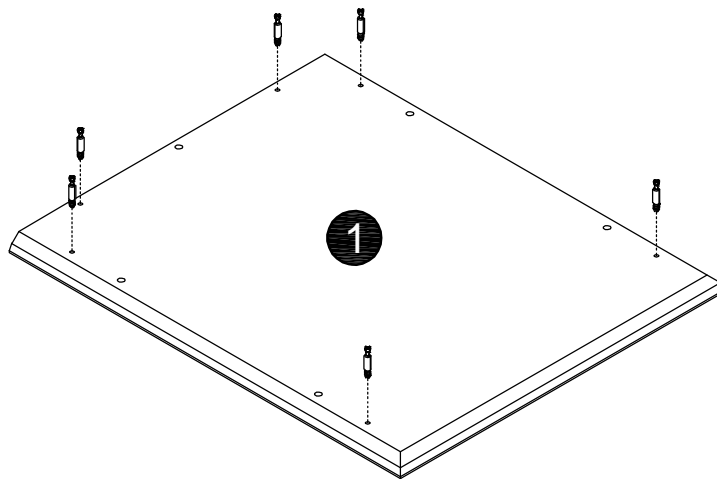


Push the black lever down and pull the SLIDE from the RAIL.

STEP 2



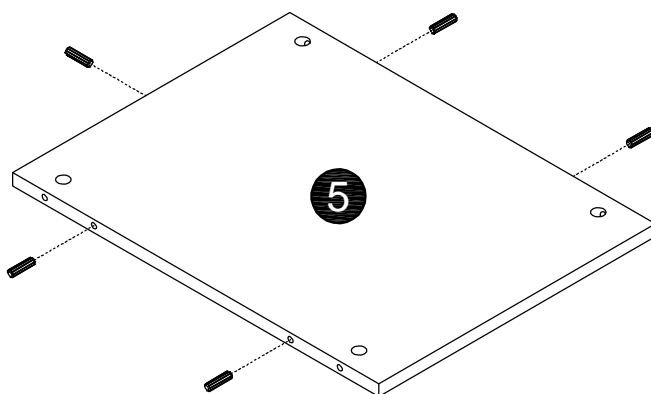
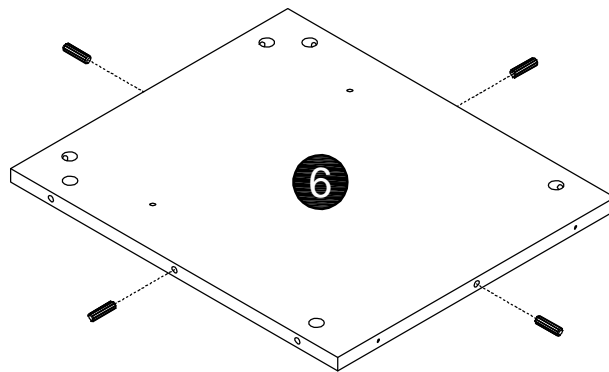
B.CAM SCREW - 6



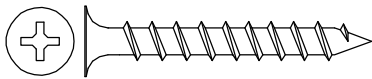
STEP 3



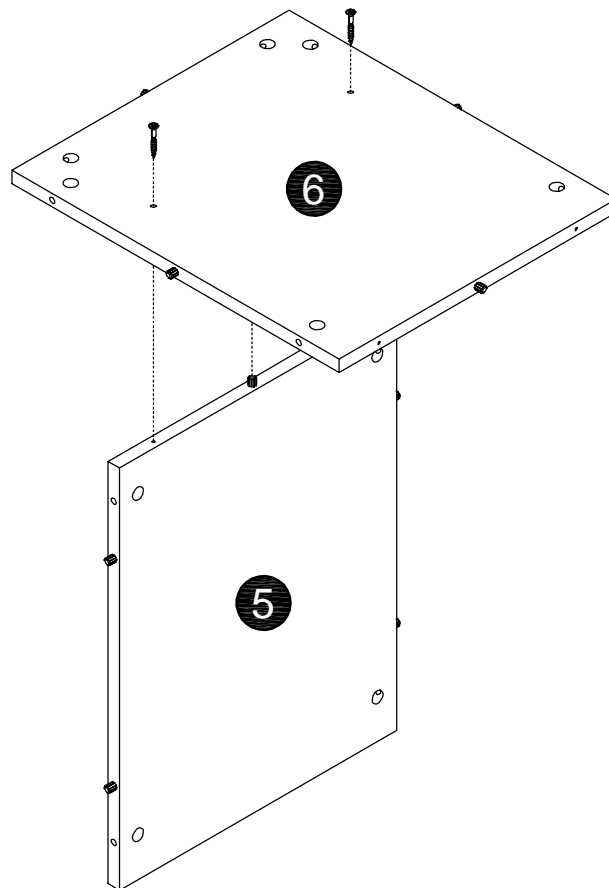
C.WOOD DOWEL - 9



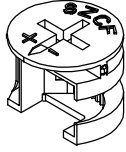
STEP 4



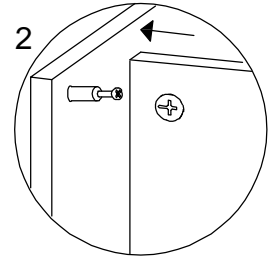
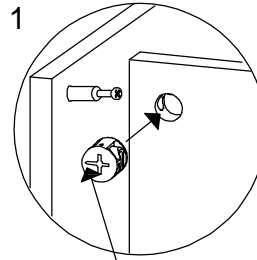
E. 1-1/2"FLAT HEAD SCREW - 2



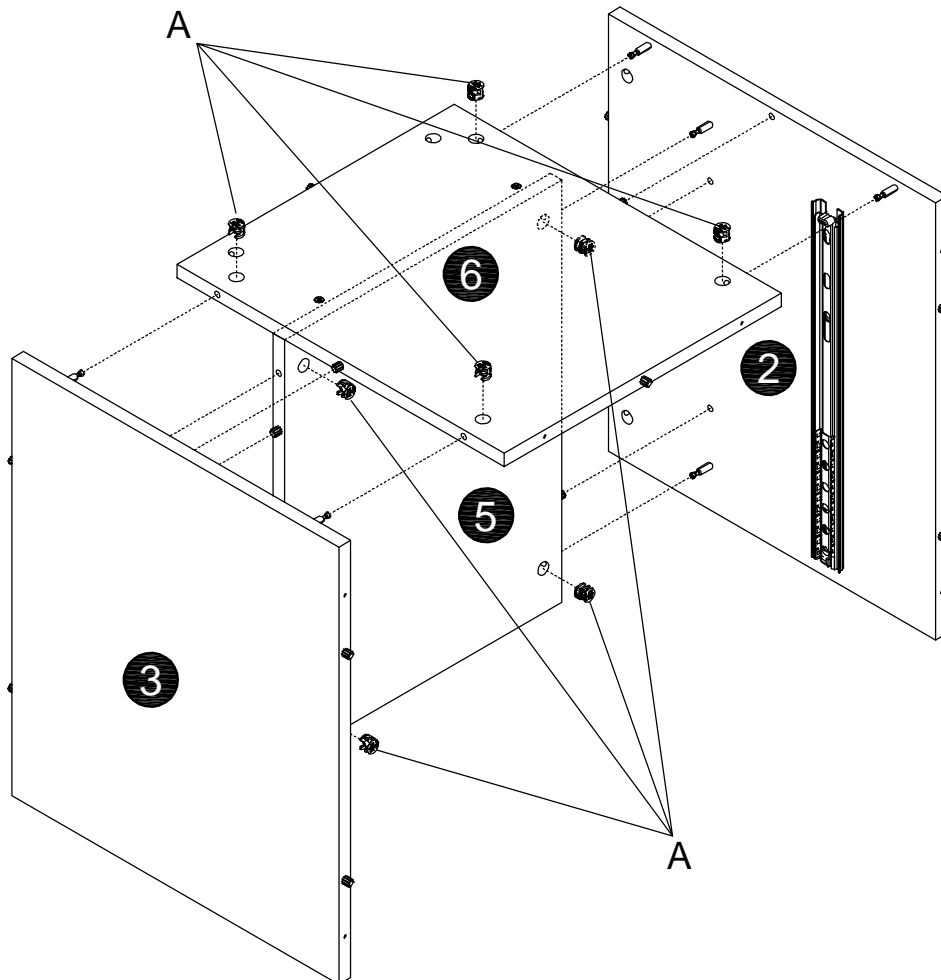
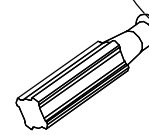
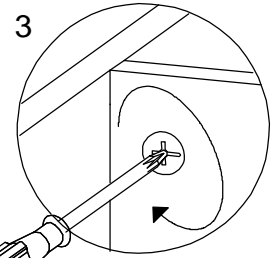
STEP 5



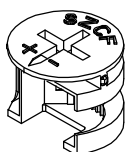
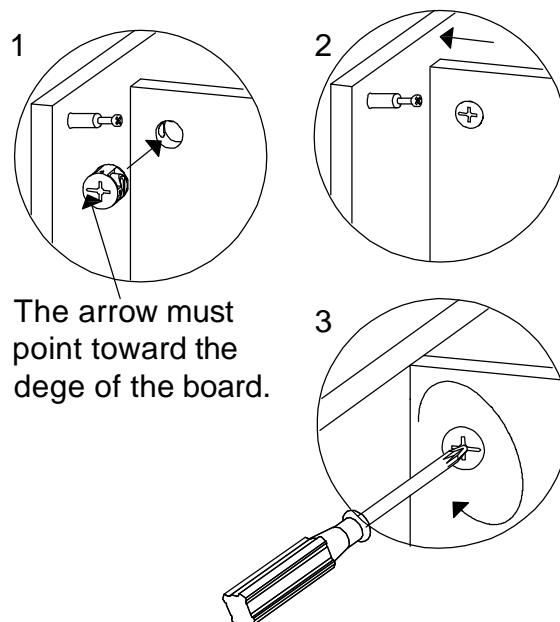
A.HIDDEN CAM - 8



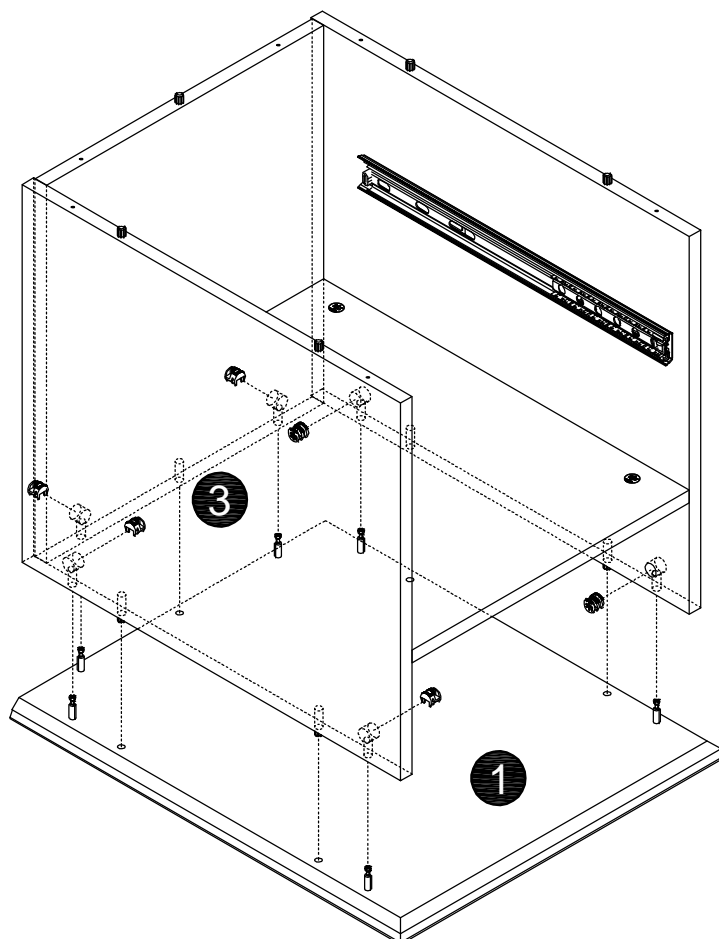
The arrow must point toward the dege of the board.



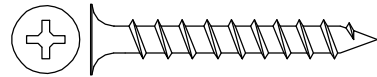
STEP 6



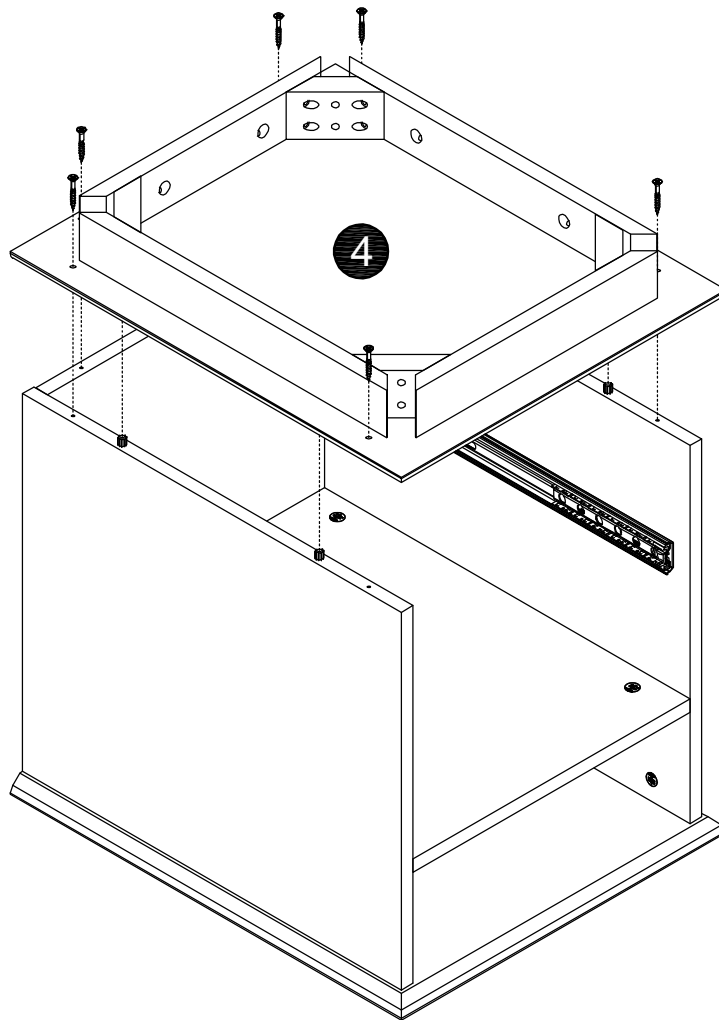
A.HIDDEN CAM - 6



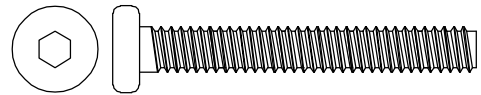
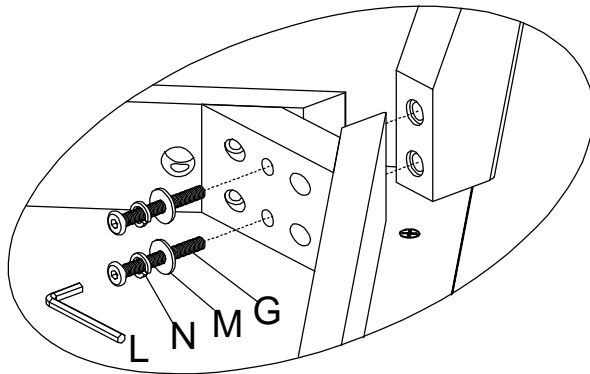
STEP 7



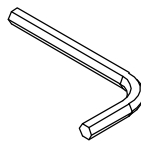
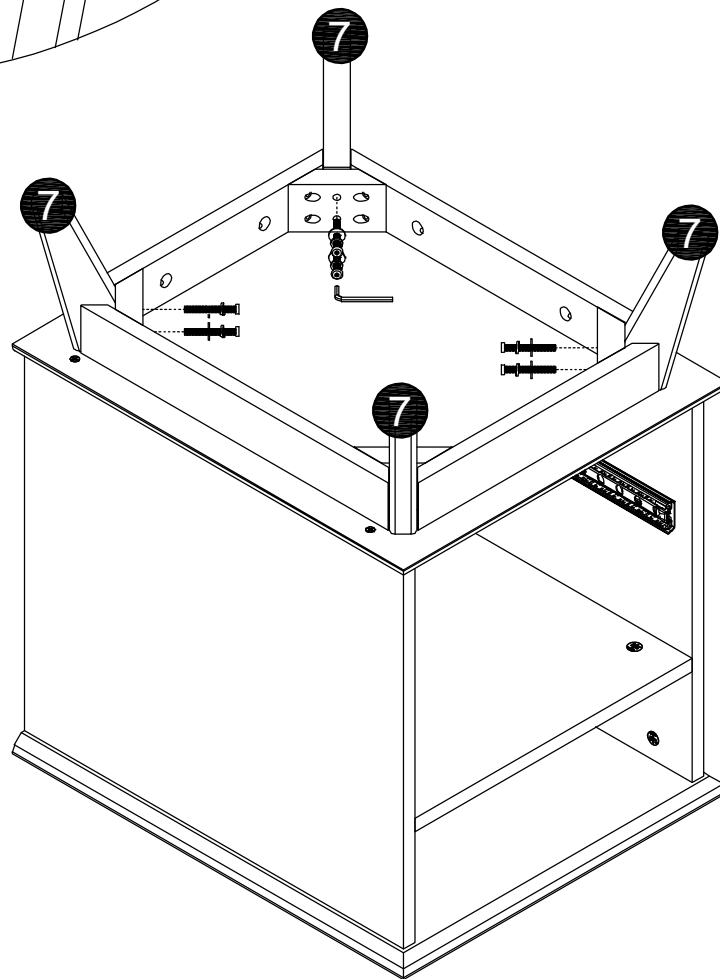
E. 1-1/2"FLAT HEAD SCREW - 6



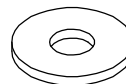
STEP 8



G. 1-3/4" MACHINE SCREW - 8



L. WRENCH - 1

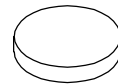
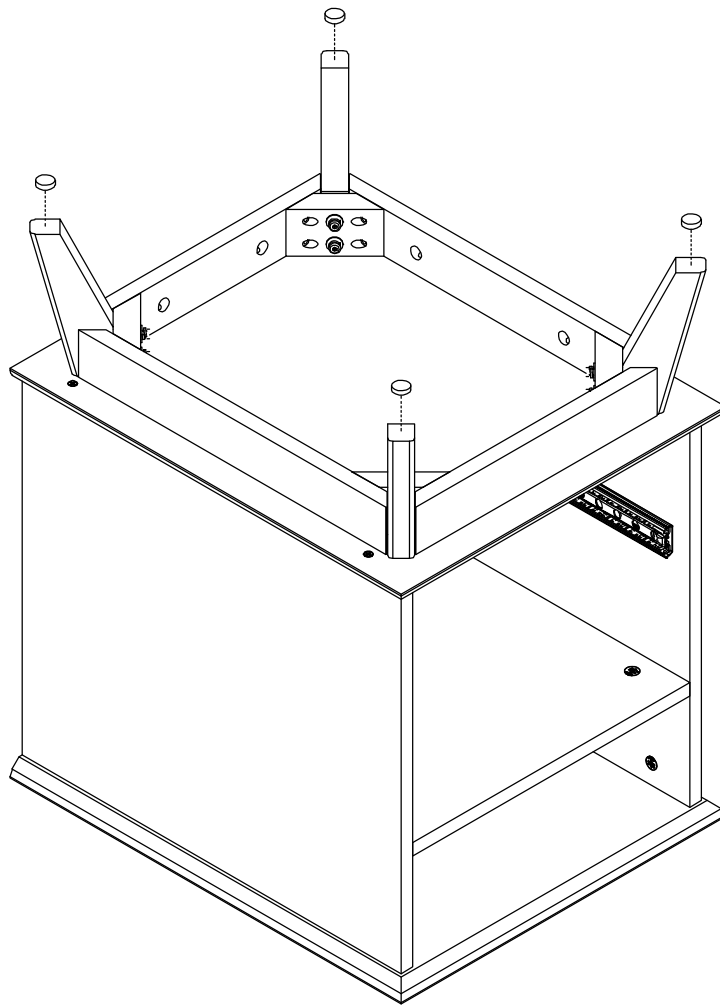


M. WASHER - 8



N. LOCK WASHER - 8

STEP 9

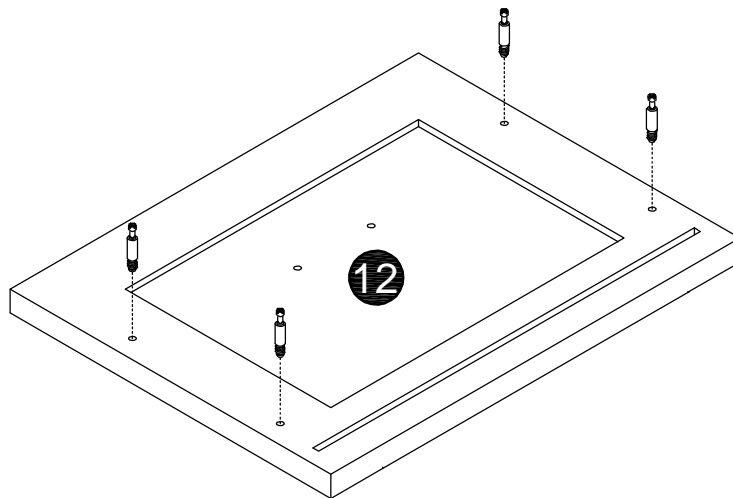


K.FELT FEET - 4

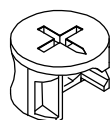
STEP 10



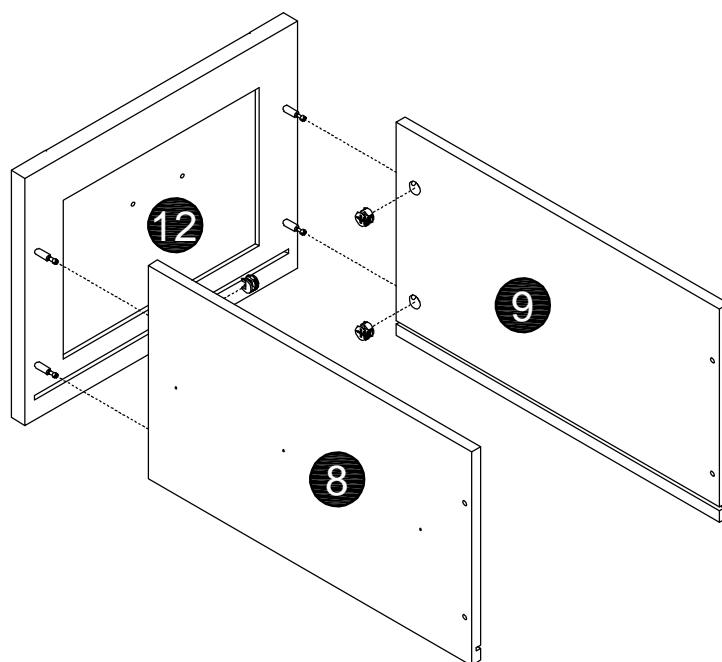
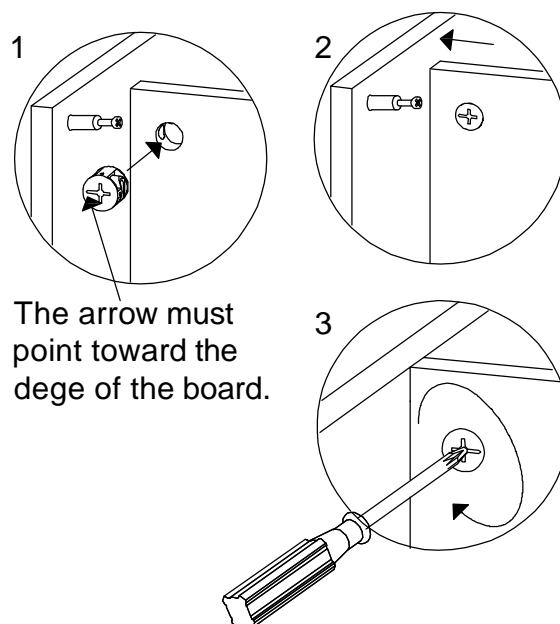
I.CAM SCREW - 4



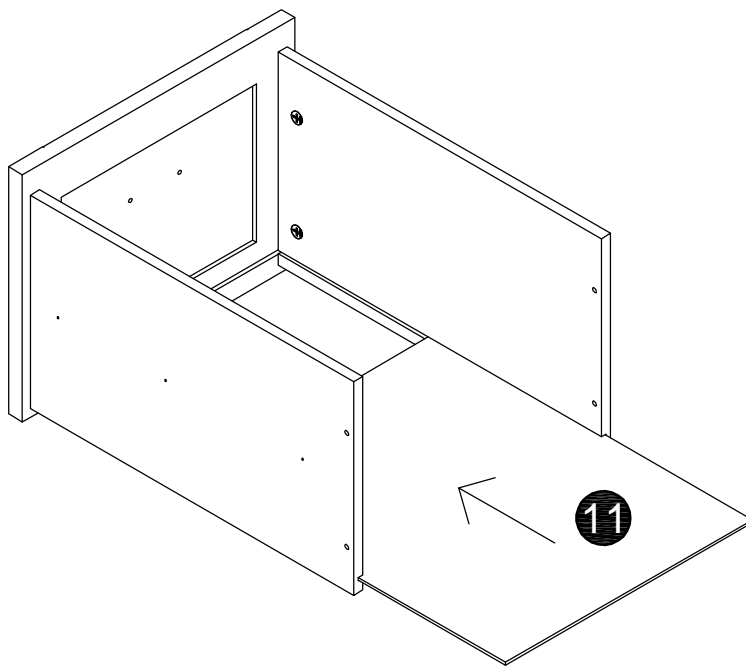
STEP 11



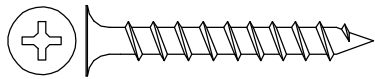
H.HIDDEN CAM - 4



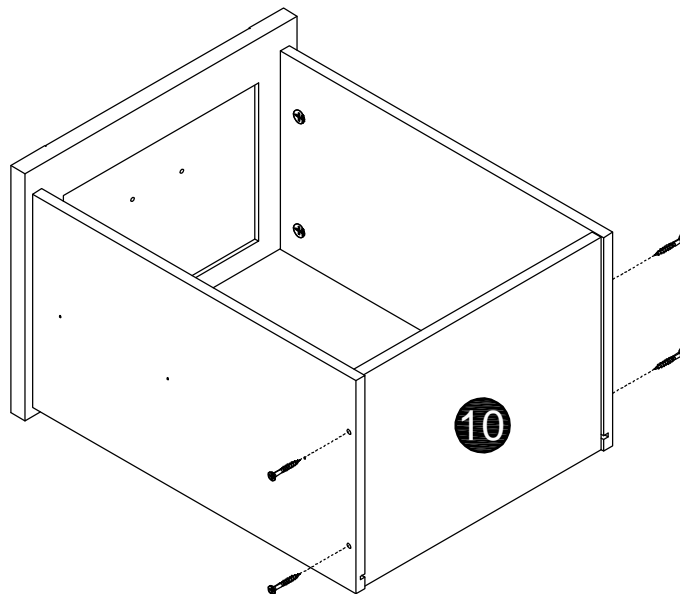
STEP 12



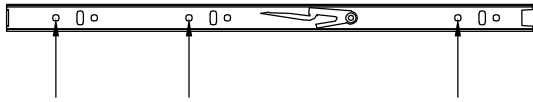
STEP 13



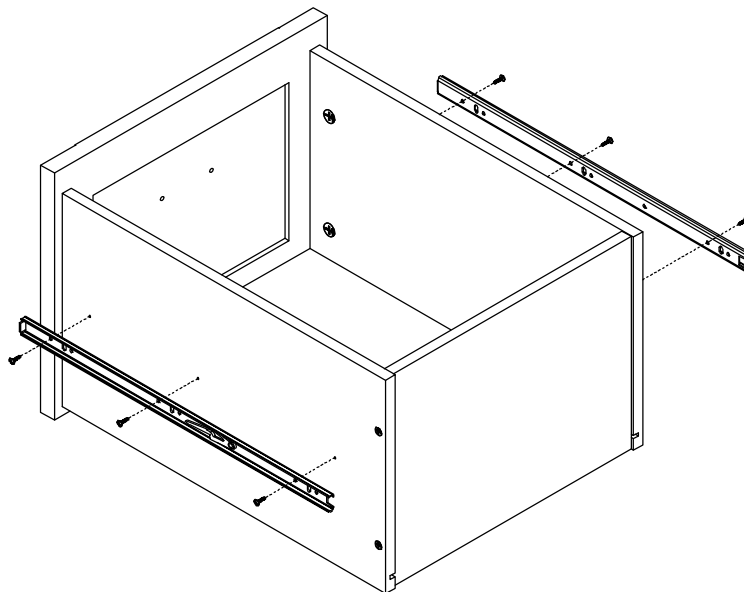
E. 1-1/2"FLAT HEAD SCREW - 4



STEP 14

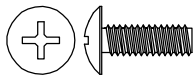


D. 1/2" PAN HEAD SCREW - 6

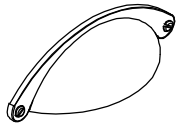


O.16" EXTENSION RAIL - 2

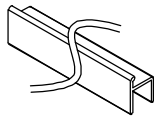
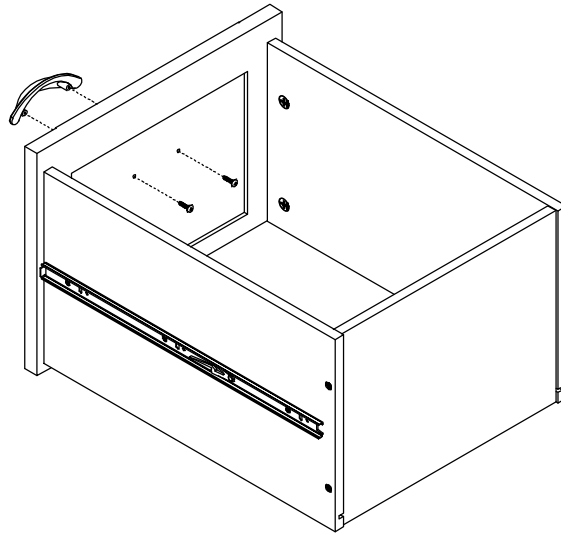
STEP 15



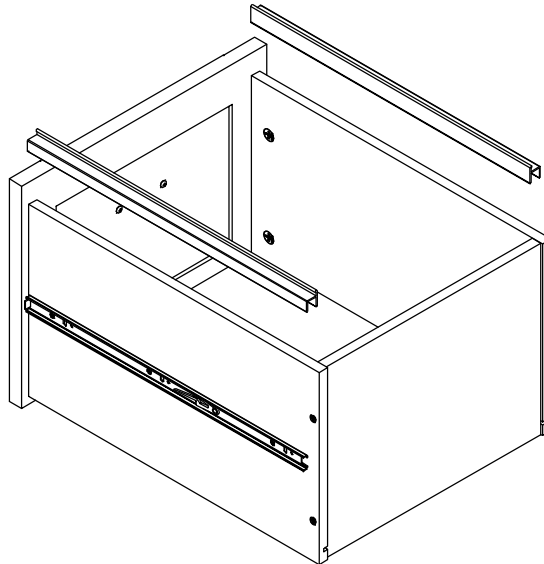
F. 1/2" MACHINE SCREW - 2



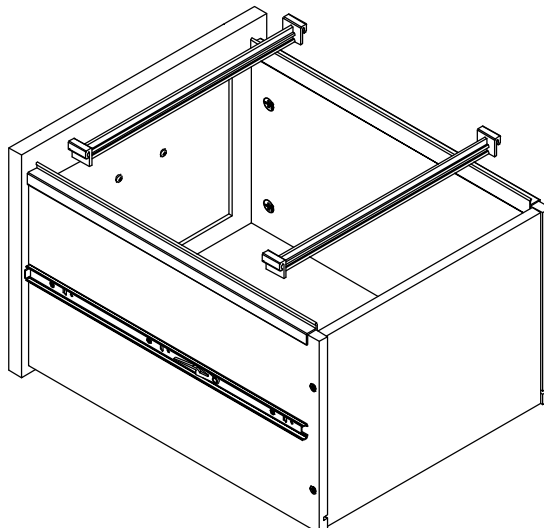
J. PULL - 1



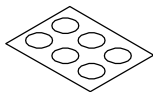
Q. FILE GLIDE - 2



R. FILE HANGER - 2

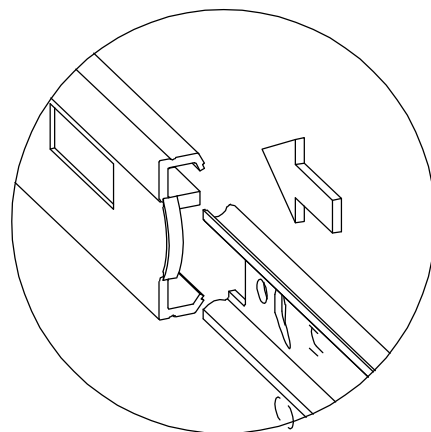
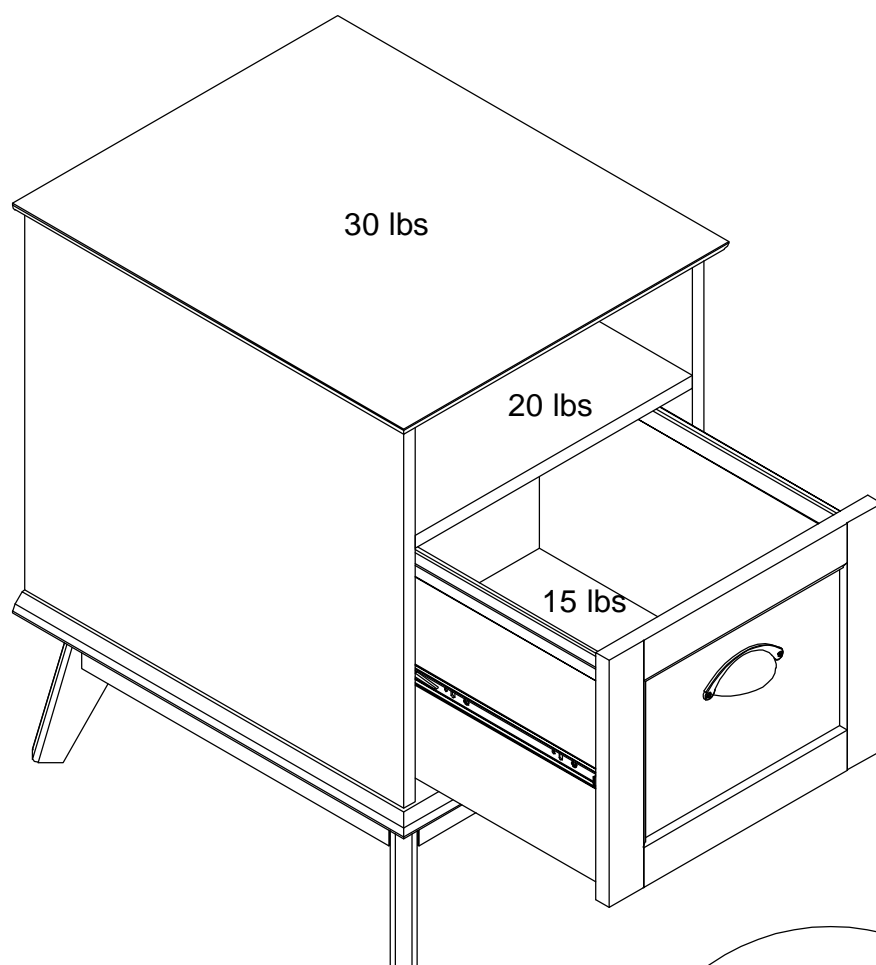


STEP 16



P.APPLIQUE CARD - 3

Peel a CAM COVER from the CAM COVER CARD (P) and stick one onto each visible HIDDEN CAM.



This completes assembly. Clean with your favorite furniture polish or a damp cloth. Wipe dry.



Warning

Please use your furniture correctly and safely. Improper use can cause safety hazards, or damage to your furniture or household items. Carefully read the following chart.

Look out for:	What can happen:	How to avoid the problem:
<ul style="list-style-type: none">• Overloaded shelves and drawers.• Improperly loading can cause the product to be top-heavy.	<ul style="list-style-type: none">• Risk of injury.• Top-heavy furniture can tip over.• Overloaded shelves and drawers can break.	<ul style="list-style-type: none">• Never exceed the weight limits shown in the instructions. <p>Work from bottom to top when loading shelves and drawers. Place the heavier items on the lower shelves or in lower drawers.</p>
<ul style="list-style-type: none">• Improperly moving furniture that is not designed and equipped with casters.	<ul style="list-style-type: none">• Furniture can tip over or break if improperly moved.• Physical injury. Furniture can be very heavy.• Breakage of tops - particularly with double pedestal furniture (drawers at both ends).	<ul style="list-style-type: none">• Unload shelves and drawers from top to bottom before moving the unit.• Do not push furniture, especially on a carpeted floor. Have a friend help you lift the item and set it in place.
<ul style="list-style-type: none">• Placing TVs on furniture items that are not designed to support a television is hazardous.	<ul style="list-style-type: none">• Risk of injury or death. TVs can be very heavy. Plus the weight and location of the picture tube tends to make TVs unbalanced and prone to tipping forward.	<ul style="list-style-type: none">• Provide support to the center section of the top when lifting the furniture.• This product is not designed to support a television.



Aviso

Por favor, use sus muebles correctamente y con seguridad. El uso incorrecto puede causar riesgos de seguridad o daños a sus muebles o artículos del hogar. Lea atentamente la siguiente tabla.

Tener cuidado de:	Que puede pasar:	Cómo evitar el problema:
<ul style="list-style-type: none">• Estanterías y cajones sobrecargados.• La carga incorrecta puede hacer que el producto sea muy pesado.	<ul style="list-style-type: none">• Riesgo de lesiones.• Los muebles pesados pueden volcarse.• Los estantes y cajones sobrecargados pueden romperse.	<ul style="list-style-type: none">• Nunca exceda los límites de peso que se muestran en las instrucciones.• Trabaje de abajo hacia arriba cuando cargue estantes y cajones. Coloque los artículos más pesados en los estantes inferiores o en los cajones inferiores.
<ul style="list-style-type: none">• Mover incorrectamente los muebles que no están diseñados y equipados con ruedas.	<ul style="list-style-type: none">• Los muebles pueden volcarse o romperse si se mueven incorrectamente.• Lesiones físicas. Los muebles pueden ser muy pesados.• Rotura de tapas, particularmente con muebles de doble pedestal (cajones en ambos terminales).	<ul style="list-style-type: none">• Descargue los estantes y los cajones de arriba a abajo antes de mover la unidad.• No empuje los muebles, especialmente en un suelo con alfombra. Pídale a un amigo que lo ayude a levantar el artículo y a colocarlo en su lugar.
<ul style="list-style-type: none">• Colocar televisores en muebles que no están diseñados para soportar un televisor es peligroso.	<ul style="list-style-type: none">• Riesgo de lesiones o muerte. Los televisores pueden ser muy pesados. Además, el peso y la ubicación del tubo de imagen tienden a hacer que los televisores no estén equilibrados y sean propensos a inclinarse hacia adelante.	<ul style="list-style-type: none">• Proporcione soporte a la sección central de la parte superior cuando levante los muebles.• Este producto no está diseñado para soportar una televisión.



Attenzione

Si prega di utilizzare il vostro arredamento in modo corretto e sicuro. L'uso improprio può causare rischi per la sicurezza o danni ai mobili o articoli per la casa. Leggere attentamente la seguente tabella.

Fate attenzione a:	Cosa potrebbe succedere:	Come evitare il problema:
<ul style="list-style-type: none">• Scaffali e cassetti sovraccaricati.• Il carico improprio può causare un pesante sovraccarico del prodotto.	<ul style="list-style-type: none">• Rischio di infortunio.• I mobili pesanti possono rovesciarsi.• Scaffali e cassetti sovraccaricati possono rompersi.	<ul style="list-style-type: none">• Non superare mai i limiti di peso indicati nelle istruzioni.• Lavora dal basso verso l'alto quando carichi scaffali e cassetti. Posizionare gli articoli più pesanti sui ripiani inferiori o nei cassetti inferiori.
<ul style="list-style-type: none">• Mobili in movimento scorretto che non sono progettati e dotati di ruote.	<ul style="list-style-type: none">• I mobili possono ribaltarsi o rompersi se spostati in modo errato.• Ferita fisica. I mobili possono essere molto pesanti.• Rottura dei piani - in particolare con mobili a doppio piedistallo (cassetti in entrambi termina).	<ul style="list-style-type: none">• Scaricare scaffali e cassetti dall'alto verso il basso prima di spostare l'unità.• Non spingere i mobili, specialmente su un pavimento in moquette.• Chiedi a un amico di aiutarti a sollevare l'oggetto e metterlo in posizione.
<ul style="list-style-type: none">• Posizionare i televisori su mobili non progettati per supportare un televisore potrebbe essere pericoloso.	<ul style="list-style-type: none">• Rischio di lesioni o morte. I televisori possono essere molto pesanti. Più il peso e la posizione del tubo dell'immagine tendono a rendere i TV sbilanciati e inclini a inclinarsi in avanti.	<ul style="list-style-type: none">• Fornire supporto alla sezione centrale del piano superiore quando si sollevano i mobili.• Questo prodotto non è progettato per supportare un televisore.

1-YEAR LIMITED WARRANTY

1. We provide limited warranty coverage to the original purchaser of this product for a period of one year from the date of purchase against defects in materials or workmanship of our components.

As used in this Warranty, "defect" means imperfections in components which substantially impair the utility of the product. This Warranty gives you specific legal rights, and you may also have other rights which vary from state to state.

2. There is no warranty coverage for defects or conditions that result from the **failure** to follow product assembly instructions, information or warnings, misuse **or** abuse, intentional damage, fire, flood, alteration or modification of the product, or use of the product in a manner inconsistent with its intended use, nor any condition resulting from incorrect or inadequate maintenance, cleaning, or care. There is also no warranty coverage for rented products or any products purchased "used" or "as is", at a distress or going-out-of business sale, or from a liquidator.