

# ASSEMBLY INSTRUCTIONS

## Option 1 (Installed on 2 Base Cabinets)

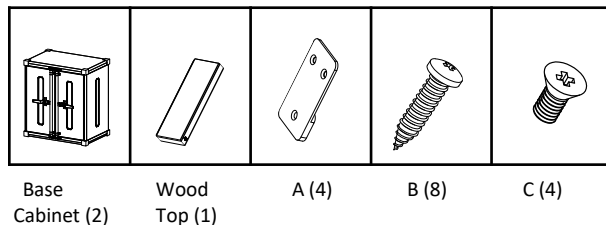
Stand two assembled Base Cabinets side by side and close to final location of where cabinets will be placed.

Position a 56" x 19" WOOD TOP on top of aligned base cabinets. Make sure logo on Wood Top edge is upright and front facing on cabinets.

Align Wood Top edges to Base Cabinets top edges. Place WOOD TOP BRACKET (A) on back corner of each cabinet. Align bottom hole on WOOD TOP BRACKET (A) to each pre-installed nut on back corner of cabinet. Insert CABINET SCREW (C) into each bottom hole and tighten them fully to cabinet with a Philips screwdriver.

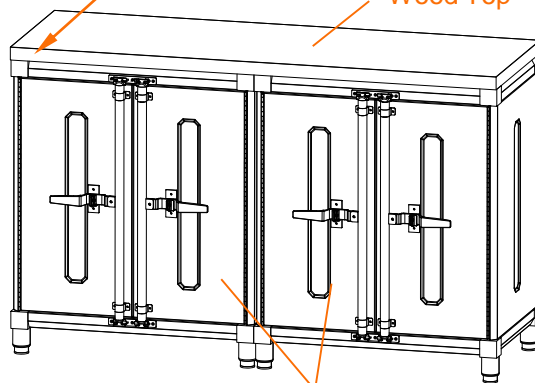
Insert WOOD SCREW (B) into each top hole and tighten them fully to Wood Top edge with a Philips screwdriver.

With 2 people, carefully slide entire assembly into final location. Do NOT lift assembly by Wood Top.

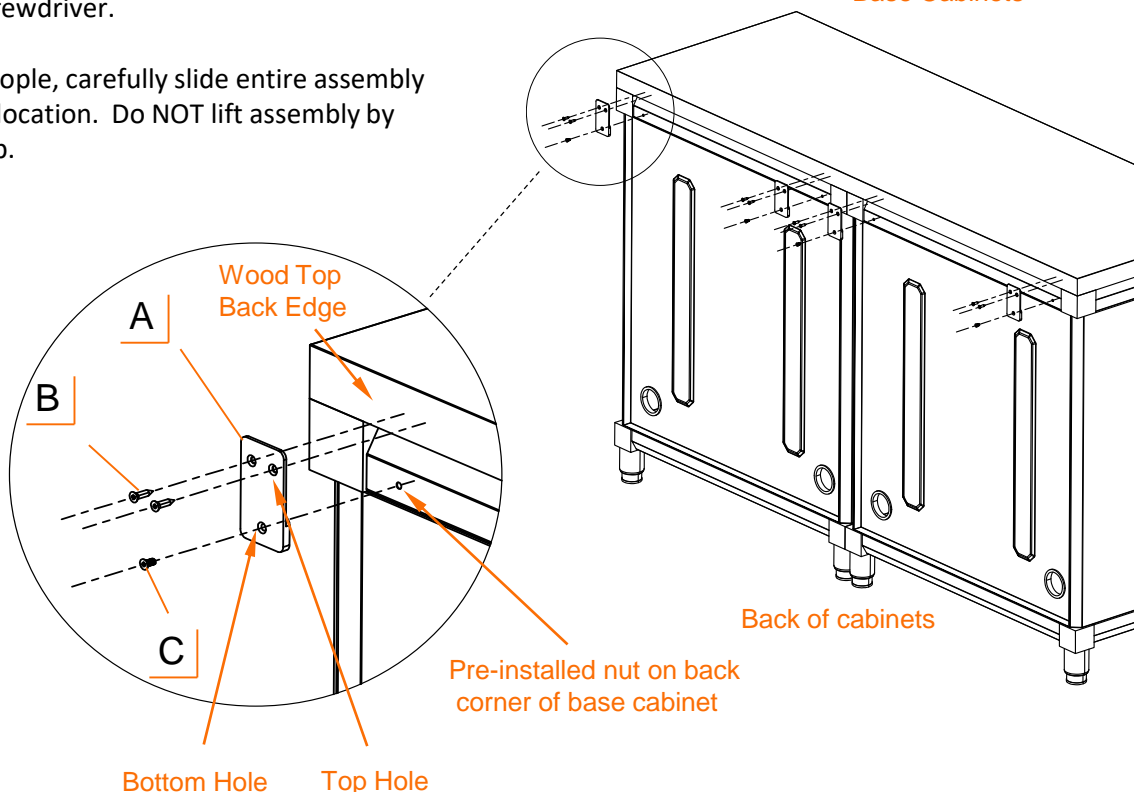


LOGO on front side of cabinet

Wood Top



Base Cabinets



# ASSEMBLY INSTRUCTIONS

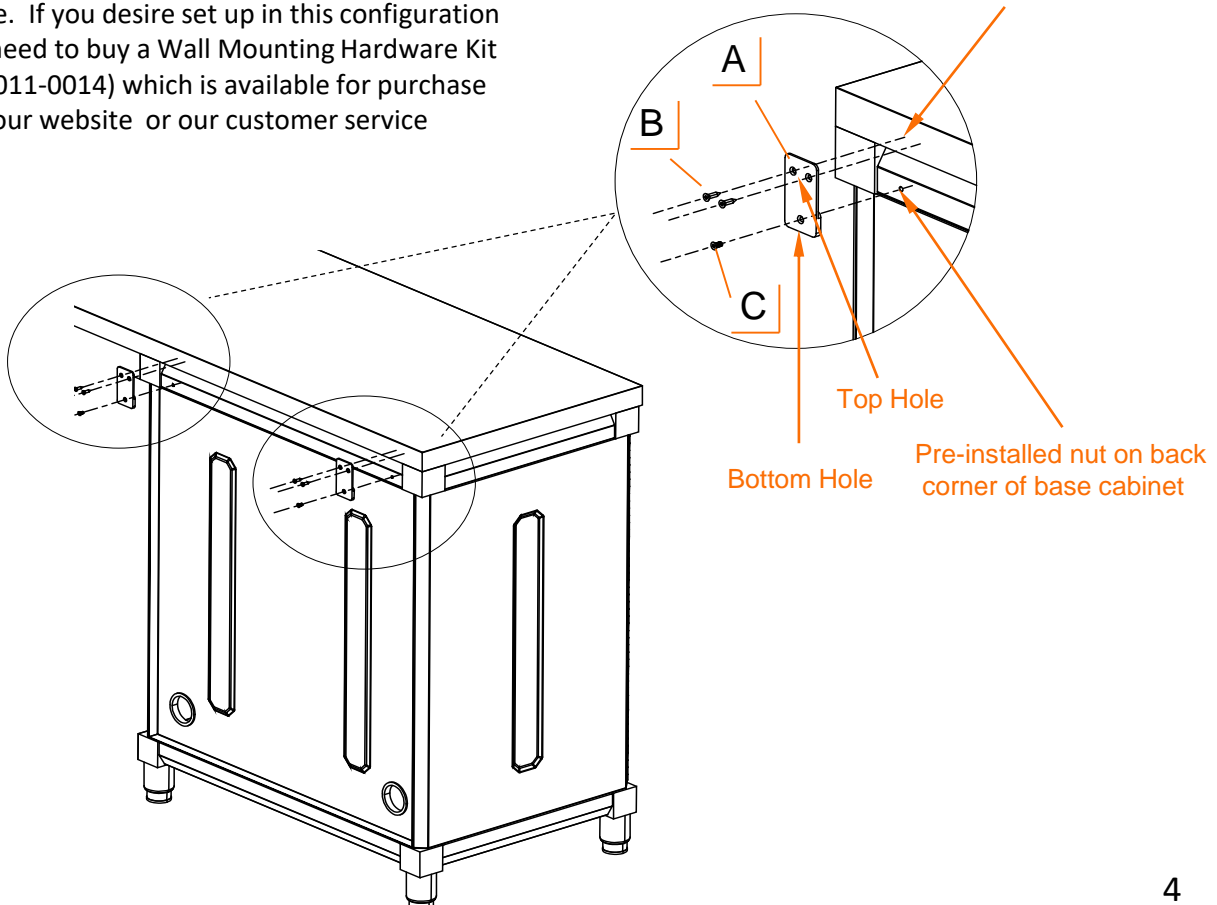
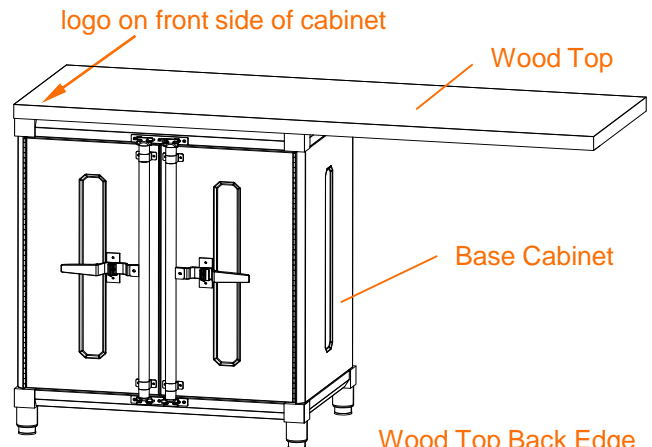
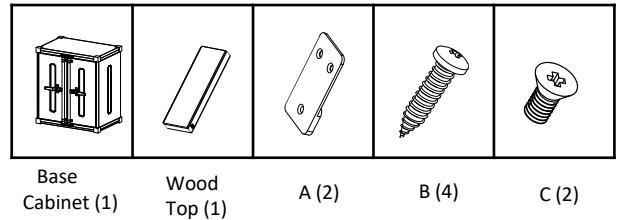
## Option 2 (Installed on 1 Base Cabinet)

Move Base Cabinet close to final location where it will be placed. With 2 people, position a 56"x 19" WOOD TOP on top of an assembled base cabinet as shown. Make sure logo on wood top edge is upright and front facing on cabinet.

Place WOOD TOP BRACKET (A) on back corner of cabinet. Align bottom hole on WOOD TOP BRACKET (A) to each pre-installed nut on back corner of cabinet. Insert CABINET SCREW (C) into each bottom hole and tighten them fully to cabinet with a Philips screwdriver.

Insert WOOD SCREW (B) into each top hole and tighten them fully to wood top edge with a Philips screwdriver.

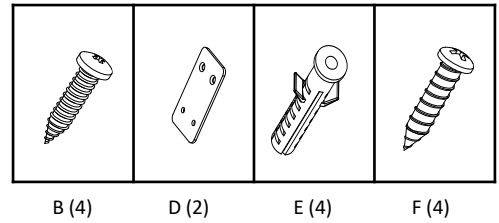
**Note:** 4-piece Set does not include Wall Mounting Hardware. If you desire set up in this configuration you will need to buy a Wall Mounting Hardware Kit (PBK-02-011-0014) which is available for purchase through our website or our customer service number.



# ASSEMBLY INSTRUCTIONS

## Option 2 (Installed on 1 Base Cabinet)

Place two WALL BRACKETS (D) to other end of back edge of Wood Top as shown. Make sure one bracket is as close as possible to end of unsupported end of wood top. Insert WOOD SCREW (B) into each top hole and tighten them fully to wood top edge with a Philips screwdriver.



With 2 people, carefully slide assembled unit to wall at desired location. Do NOT lift assembly by wood top.

Mark off mounting location on wall through bottom holes on WALL BRACKET (D). If WALL ANCHORS (E) are required, drill holes in marked locations. Insert WALL ANCHOR (E) completely into each drilled hole.

Fasten WALL SCREWS (F) through bottom holes on WALL BRACKET (D) into the wall or anchors tightly with a Philips screwdriver.

**Note:** Please consult a local contractor if you are unsure if your wall is able to bear the load of the Wood Top.

