

CANTICO SAFI RIVER BLUE MIXED FINISH LAVA STONE AND CEMENT MOSAIC TILE



The Cantico Safi River Blue Mixed Finish Lava Stone and Cement Mosaic Tile offers a modern twist on a timeless Moroccan pattern. Both geometric and floral, this playful interpretation of a traditional look brings crisp white and rich blue hues together in a nature-inspired biophilic design. The combination of materials in this contemporary mosaic adds an appealing graphic contrast.

COLORS



Safi Cloud



Safi Ocean



Safi River

SPECIFICATIONS

Chip Size
Irregular

Colorway
Blue, Green, White

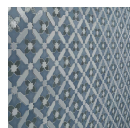
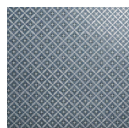
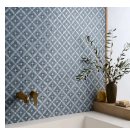
Commercial
Wall, Floor

Finish
Glossy and Matte

Material
Cement and Lava Stone

Residential
Wall, Floor

PRODUCT GALLERY



DETAILED SPECS

Available Sizes

8x16", 8x14", 11x11", 12x12", 14x14"

Coverage

0.96

DCOF

0.56

Frost Resistant

Yes

Location

Backsplash, Bathroom, Indoor, Kitchen,
Outdoor, Shower

Look

Handmade Look

MOHS

3

Outdoor Use

Wall | Floor

PEI Rating

2

Patterns

Geometric

Pieces Per Box

10

Recommended Grout Joint

Match Sheet Joint

Shade Variation

V4

Size

11.81" x 11.81"

Sq Ft Per Box

9.6

Stain Resistance

2

Stone Type

Lava Stone

Style

Contemporary, Cottage, Mediterranean, Mid
Century, Transitional

Tile Faces

2

Tile Thickness

10 mm

Tile Use

Backsplash, Bathroom Floor, Bathroom Wall,
Commercial Floor, Floor Tile, Kitchen Floor,
Kitchen Wall, Outdoor Floor, Outdoor Wall,
Shower Floor, Shower Wall, Wall Tile

Water Absorption

12.7%-22%

Weight

3.8 lbs

DIMENSIONS

Sample Size

4" x 8"



CANTICO



Inspired by traditional Moroccan zellige tiles, the Cantico collection of hand-laid mosaics is a visual delight. Skilled artisans arrange durable, precision waterjet-cut lava stone and cement pieces in a range of contemporary hues into intricate floral and geometric designs that lend a modern touch to timeless biophilic patterns. This versatile collection of matte-finish, mesh-back tiles, available in an array of warm, neutral tones may be installed indoors or out.

