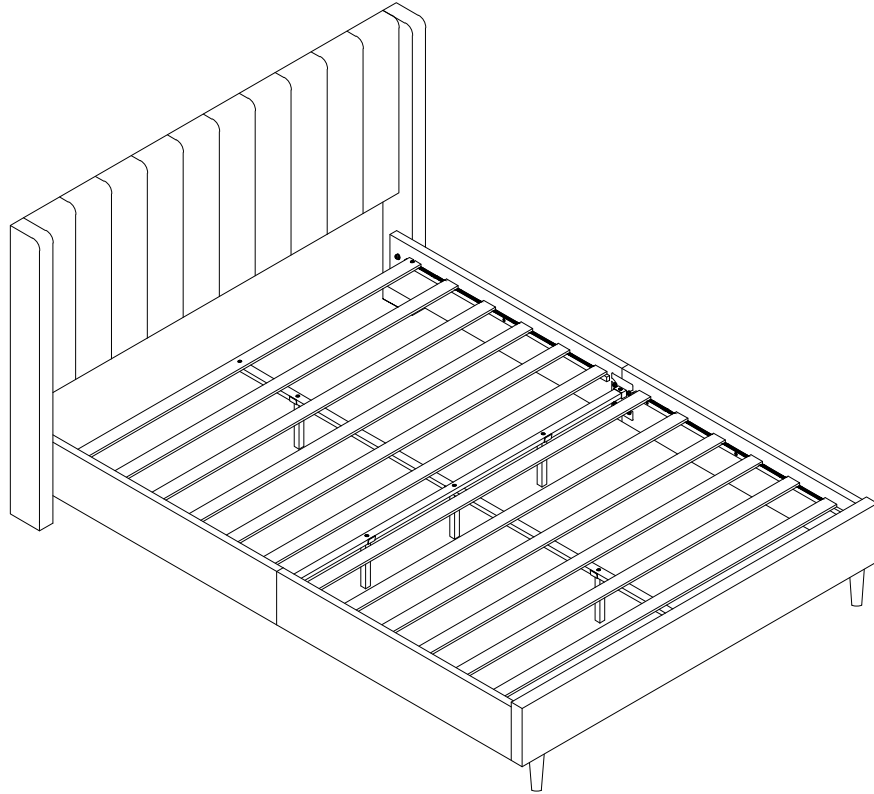
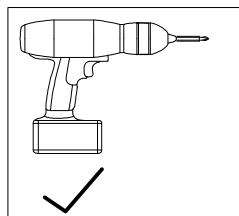


# STANDARD BED

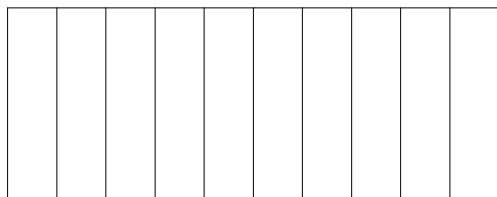


## IMPORTANT NOTE

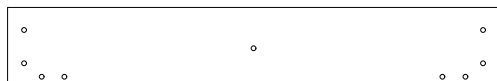
1. **ALL OTHER PART INSIDE THE HEADBOARD  
PLEASE OPEN THE ZIPPER OF HEADBOARD, AND TAKE OUT ALL  
OTHER PART BEFORE ASSEMBLY.**
2. FOR THE PROTECTION OF YOUR FURNITURE, PLACE ALL PARTS ON A  
CLEAN AND SMOOTH SURFACE TO PREVENT ANY DAMAGE.
3. DO NOT USE POWER TOOLS TO ASSEMBLE THE BED.
4. PLEASE PERIODICALLY CHECK ALL FITTINGS AND RE-TIGHTEN AS  
NECESSARY.
5. DO NOT USE THE BED UNLESS ALL BOLTS AND SCREWS ARE  
FIRMLY SECURED.
6. YOU CAN ASSEMBLE IT WITH OUR PACKAGING TOOLS



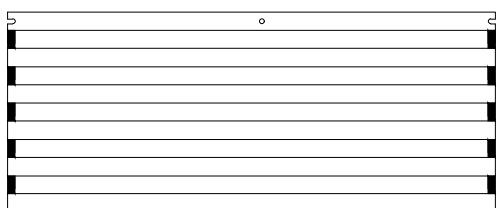
## PART LIST



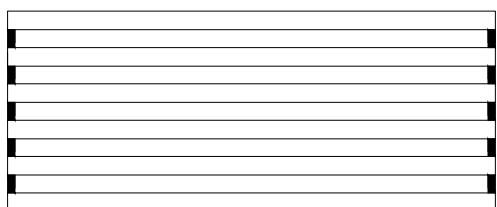
① x 1pc



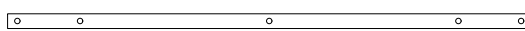
② x 1pc



③ x 1pc



④ x 1pc



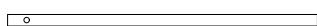
⑤ x 1pc



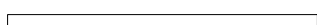
⑥ x 1pc



⑦ x 1pc



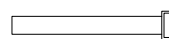
⑧ x 2pcs



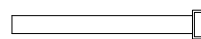
⑨ x 2pcs



⑩ x 2pcs



⑪ x 3pcs



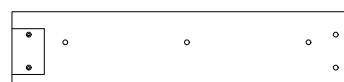
⑫ x 2pcs



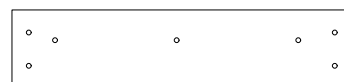
⑬ x 2pcs



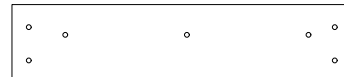
⑭ x 1pc



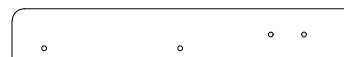
⑮ x 1pc



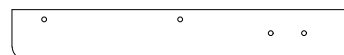
⑯ x 1pc



⑰ x 1pc



⑱ x 1pc



⑲ x 1pc



⑳ x 2pcs

## HARDWARE LIST



H1 M5 x 1pc



H2 M8x20mm x 8pcs



H3 M8x25mm x 14pcs



H4 M8x40mm x 21pcs



H5 M8x35mm x 4pcs



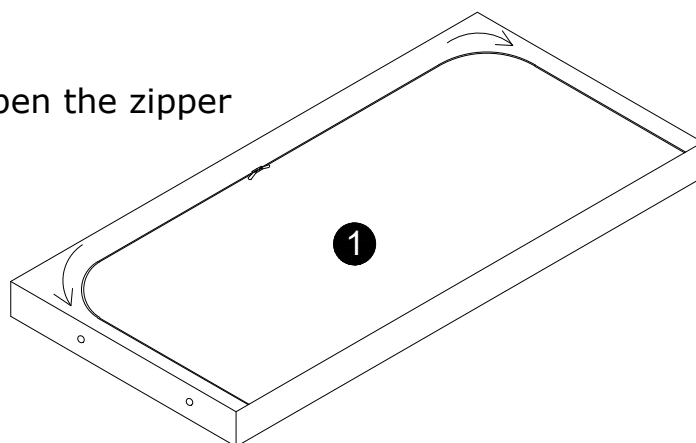
H6 M8 x 17mm x 20pcs



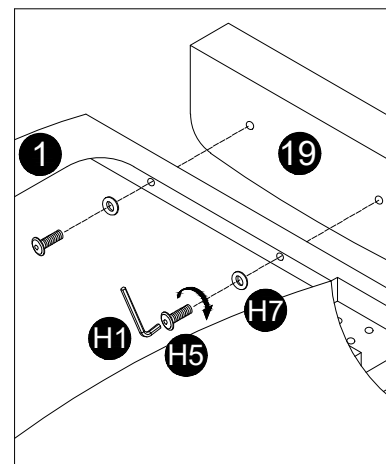
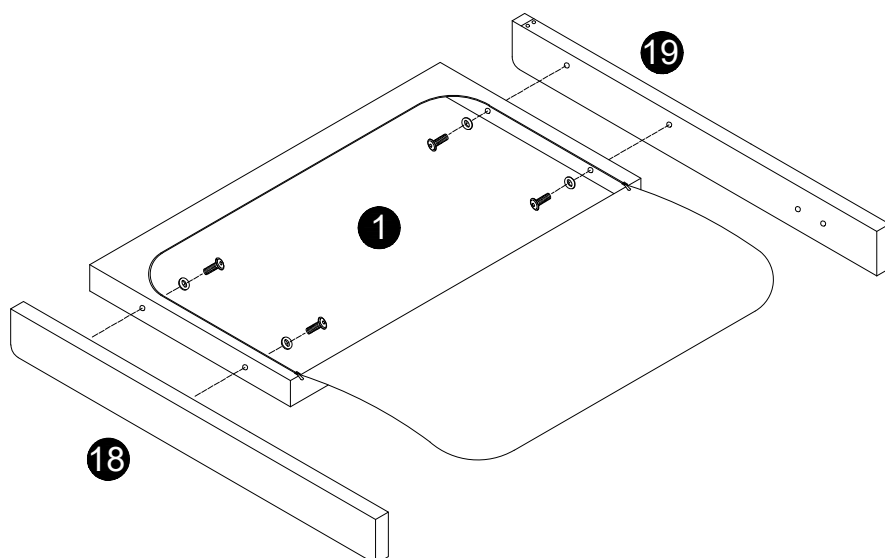
H7 M8 x 22mm x 8pcs

**1** **NOTE:** PLEASE OPEN THE ZIPPER ON THE BACK OF **1** AND TAKE OUT THE PARTS.

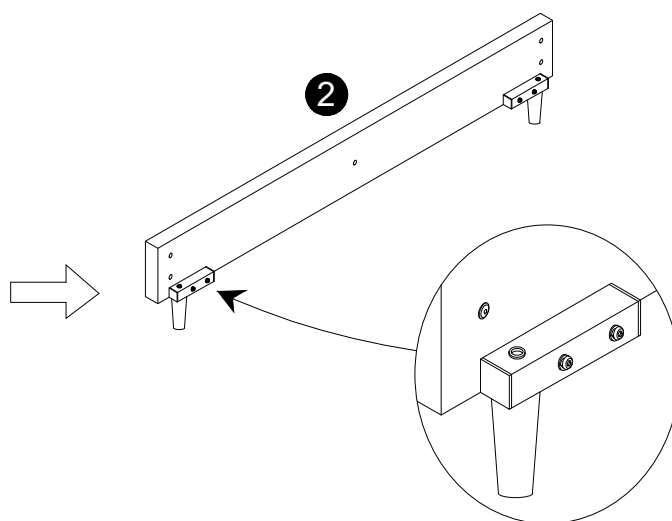
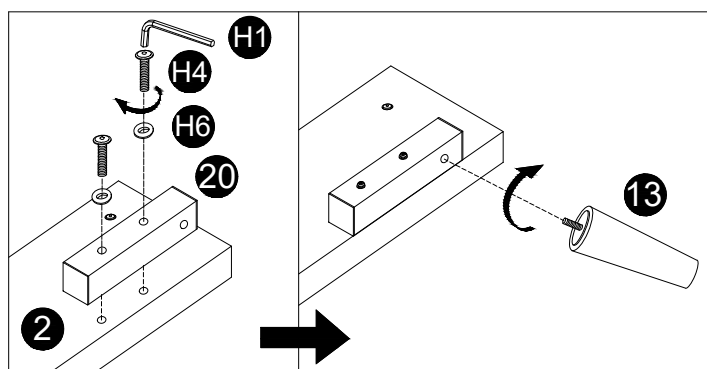
Open the zipper



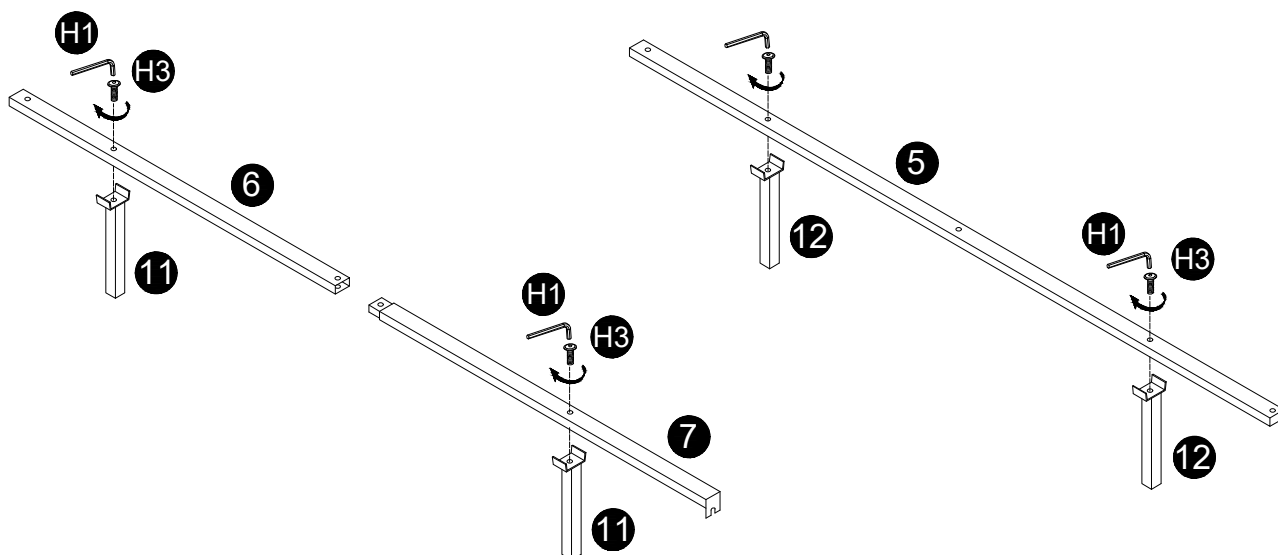
**2**



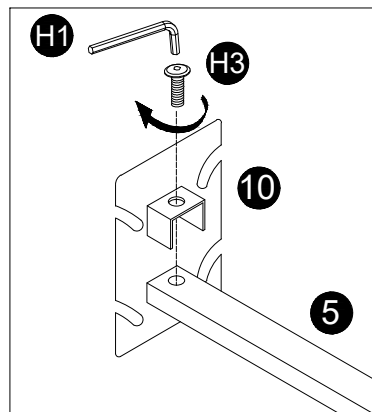
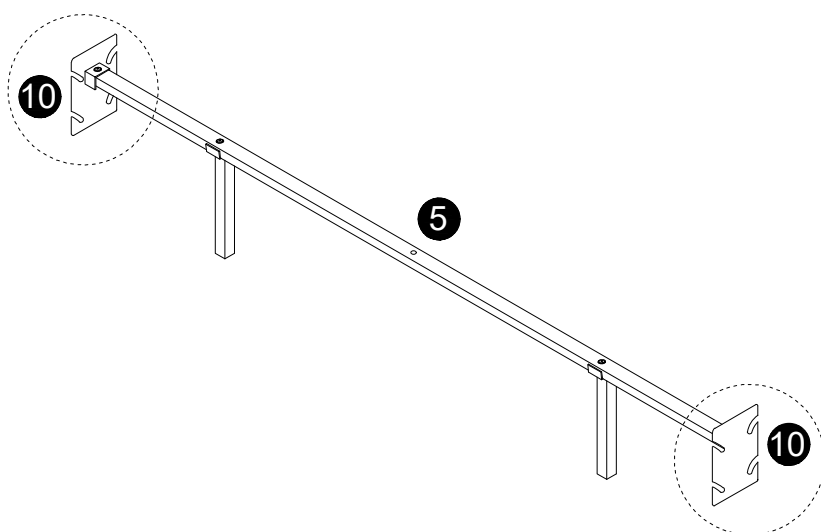
**3**



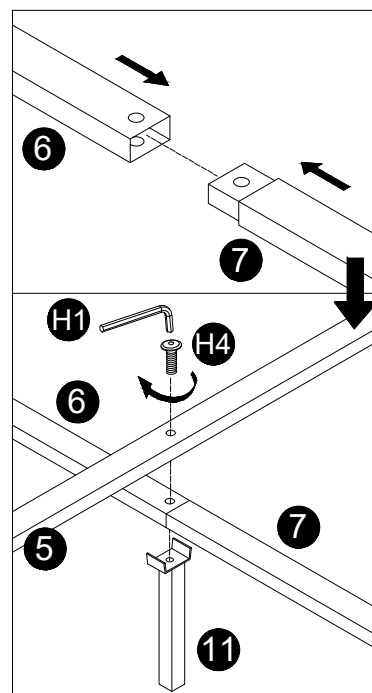
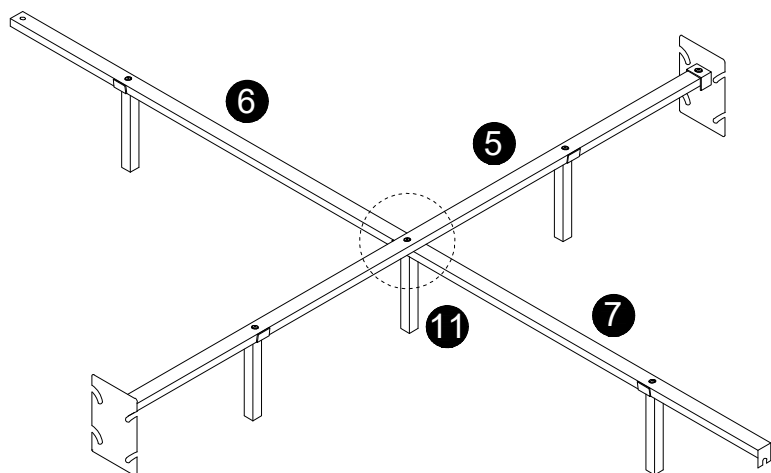
4



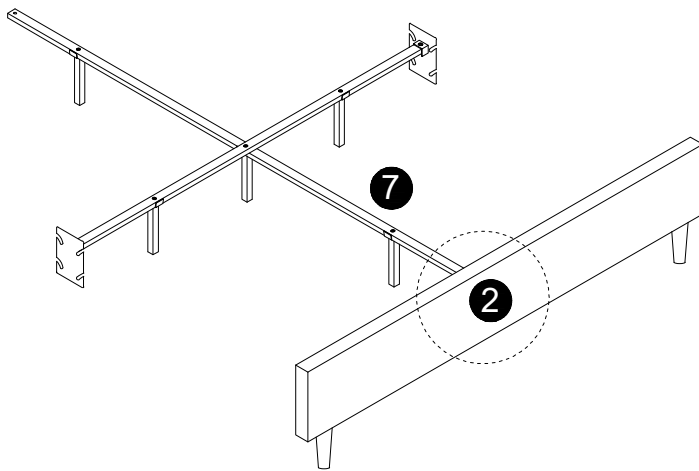
5



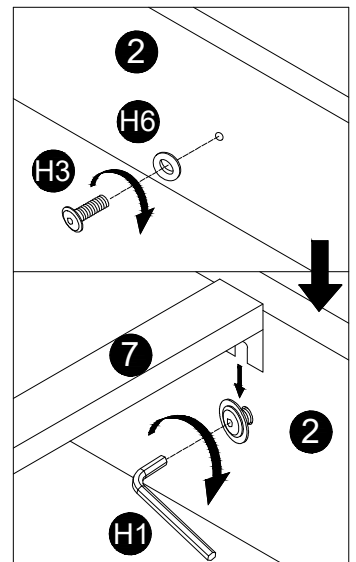
6



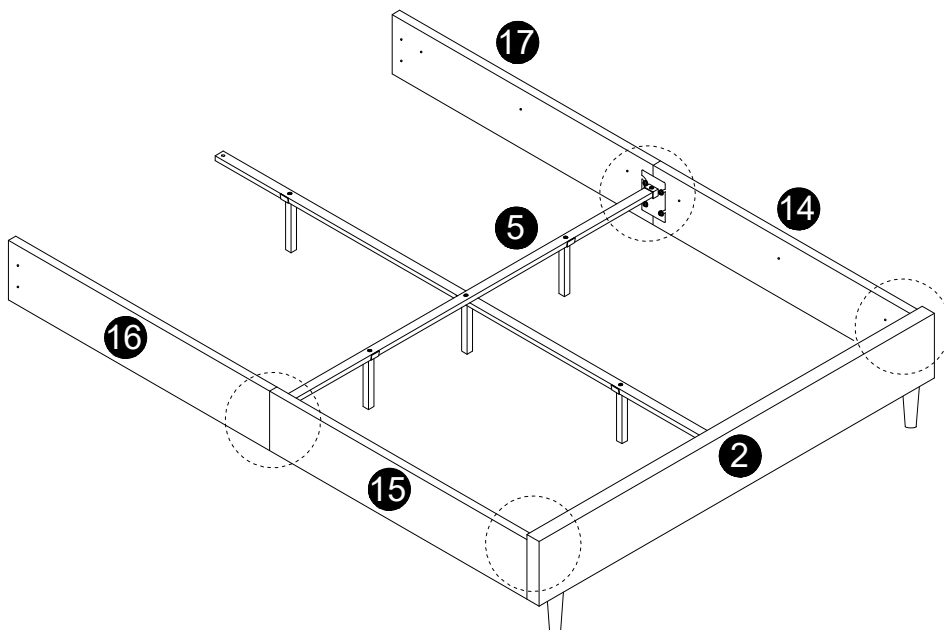
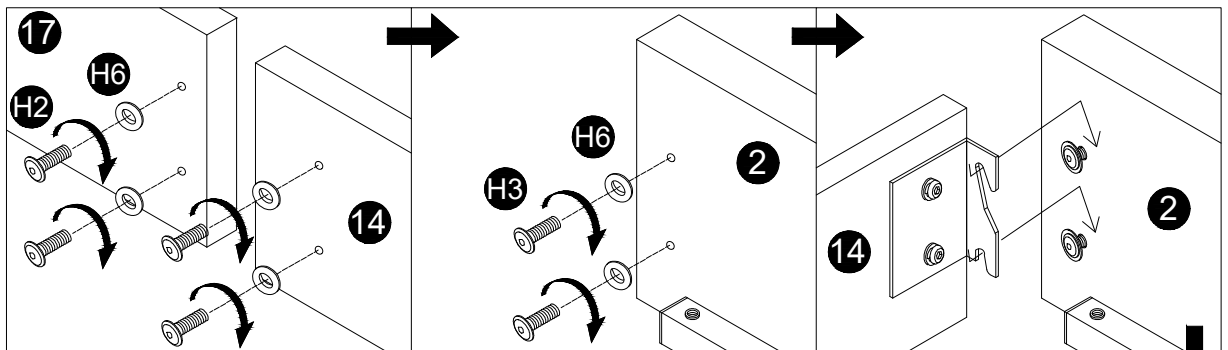
7



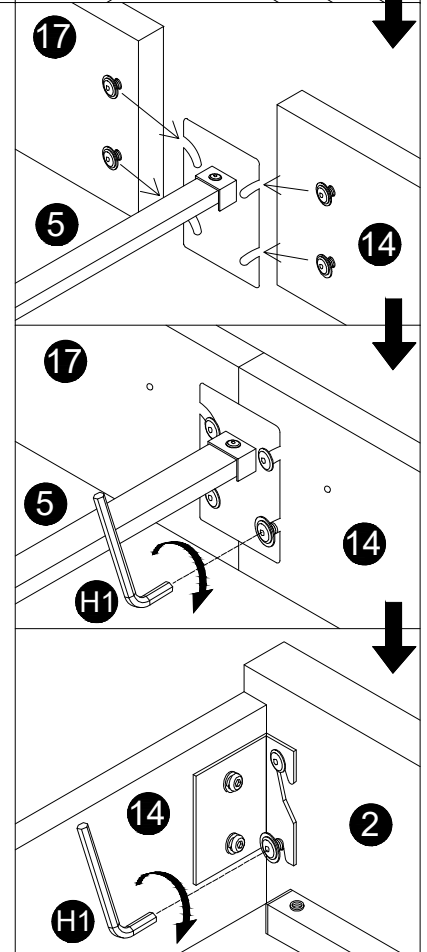
Do not fully tighten fixings!



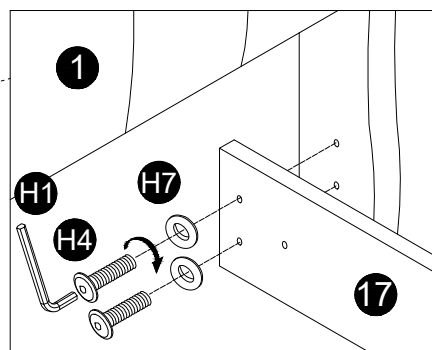
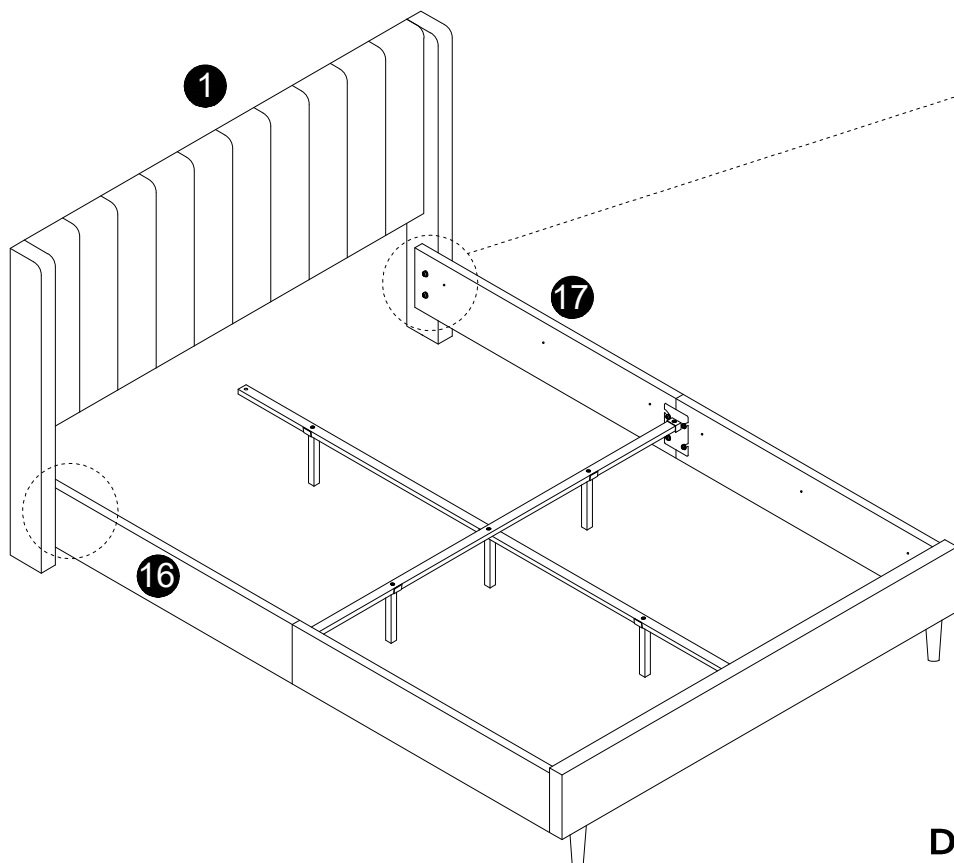
8



Do not fully tighten fixings!

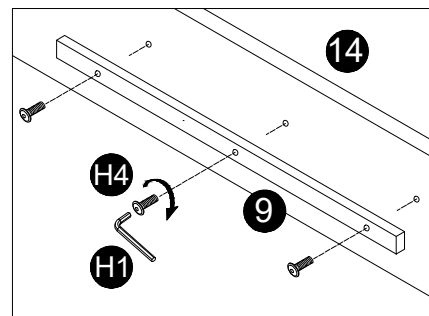
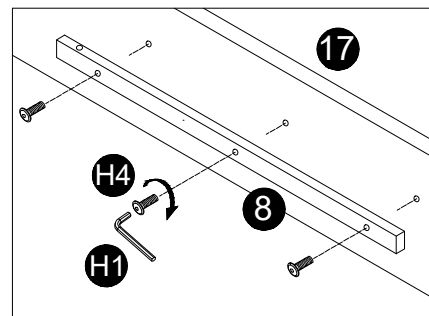
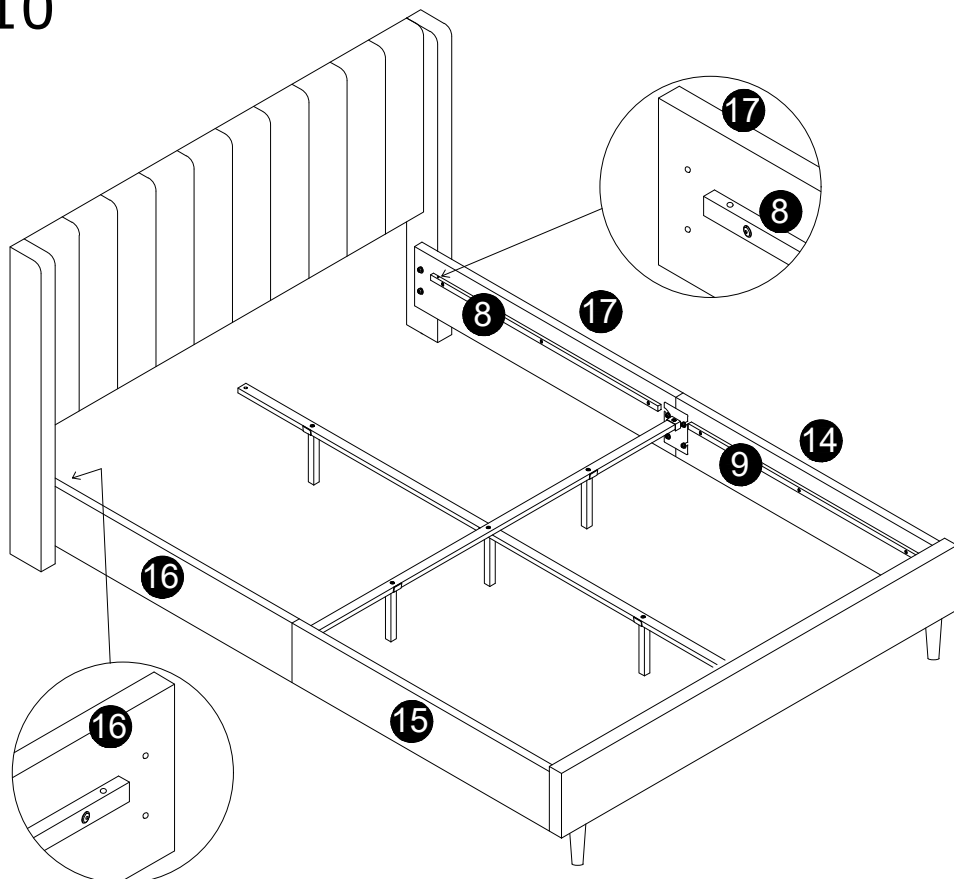


9

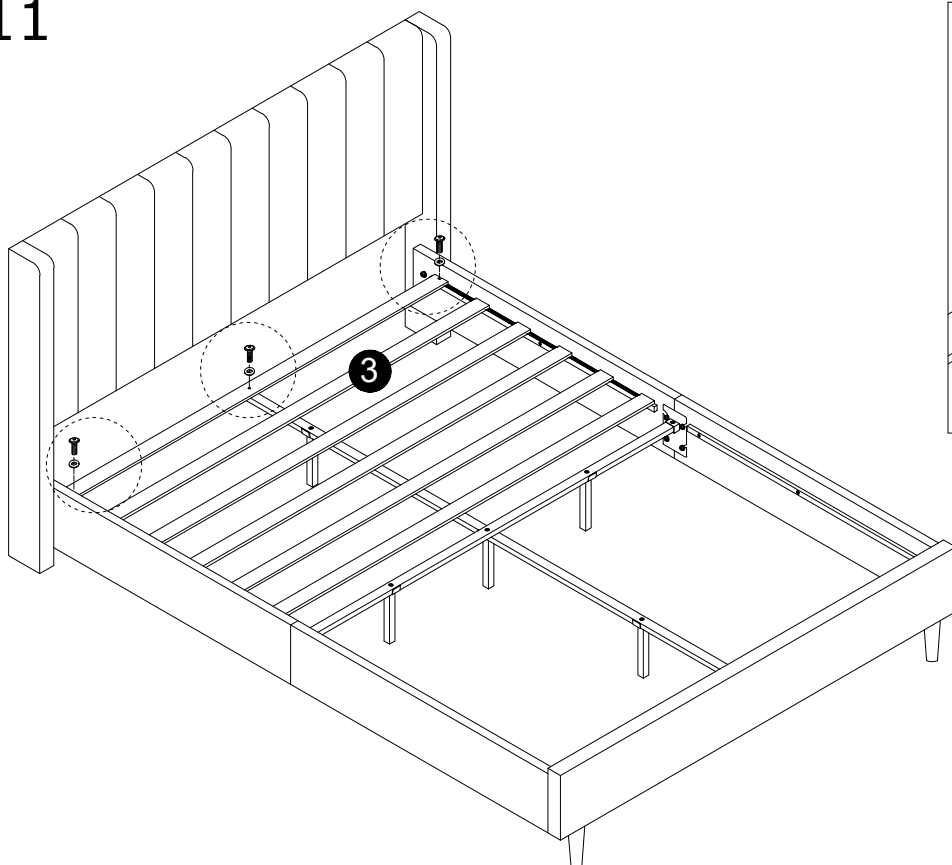


**Do not fully tighten fixings!**

10

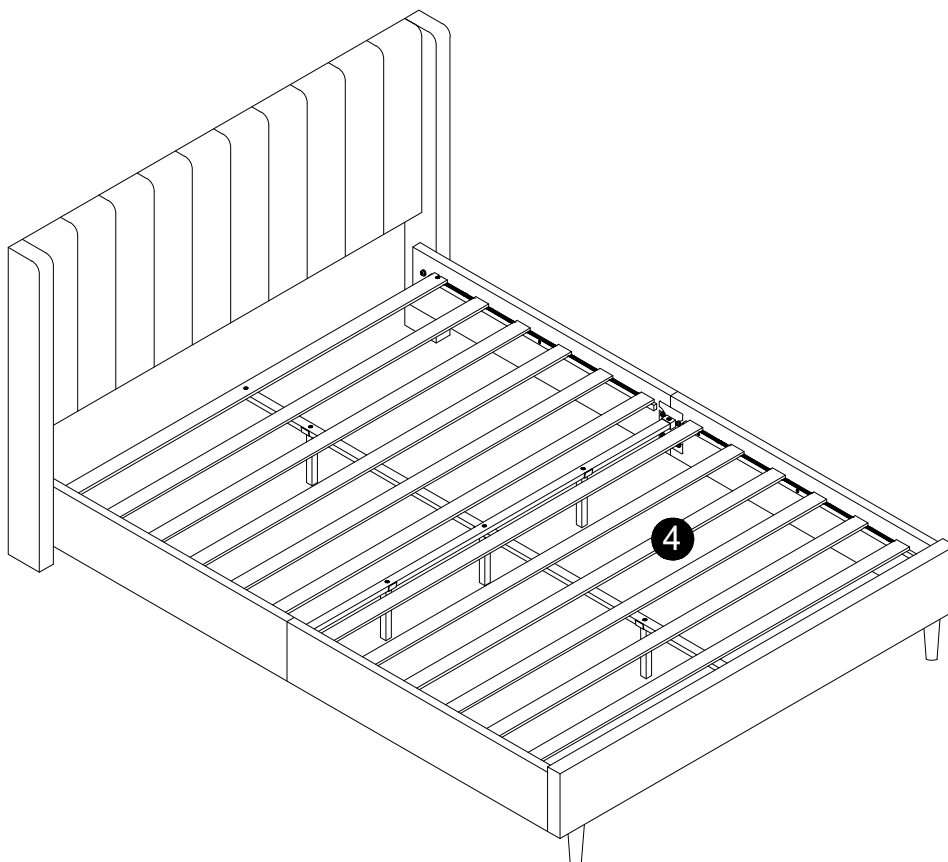


11



**Fully tighten all fixings.**

12



***Job Complete !***

*In the interest of our environment please dispose of all packaging thoughtfully.*