

10 YEAR MANUFACTURER'S LIMITED WARRANTY

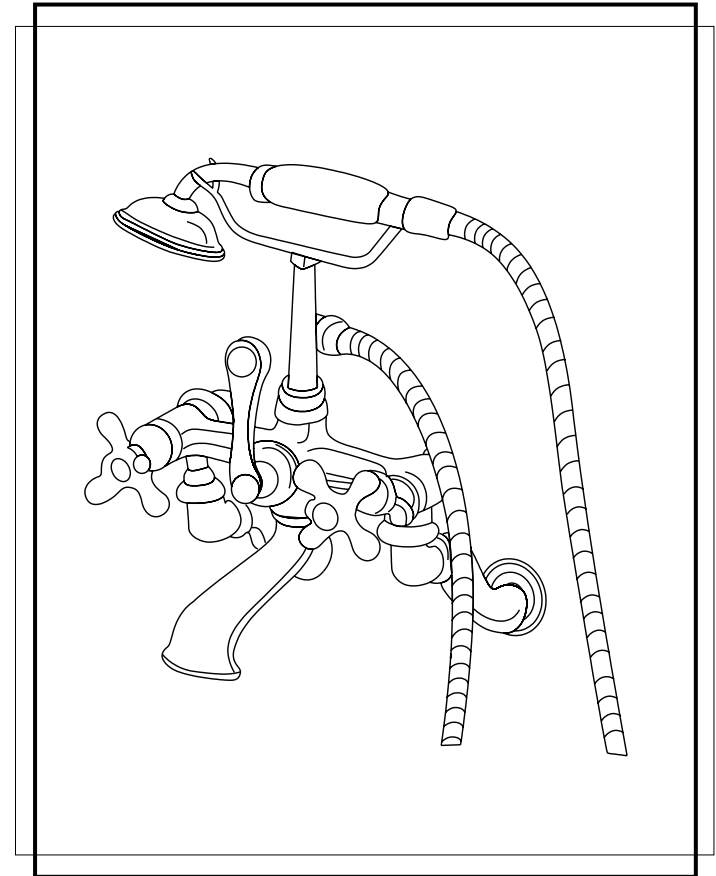
All parts of this Elements Of Design faucet are warranted to the original retail purchaser to be free from defects in material and workmanship for a period of ten(10) years from the date of purchase as shown on the purchaser's receipt. This warranty is limited to defective parts only, labor charges and/or damage resulting from improper installation, repair or replacements, as well as incidental and consequential damages connected therewith are excluded.

Any damage to this faucet as a result of misuse, abuse, neglect, accident for improper installation or any use not consistent with the instructions furnished by Elements of Design, will void this warranty. Replacement parts can be obtained from your local dealer.

CAUTION!!!

1. Water lines must be completely flushed before use, to avoid bris & clogs in your water system leading to malfunction and reduction of water flow.
2. Warranty to be void if water lines are not flushed before use of new faucet.
3. Use of abrasives of any strength may damage the finish of your faucet and void this warranty.

CODE APPROVAL: LA#M-000018

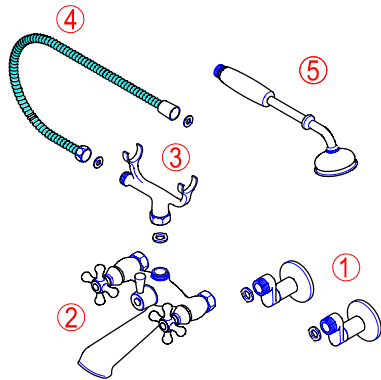


Elements
Of Design

T 909.465.6687 F 909.548.6843 1877.FAUCET.1
www.eodfaucet.com
email: support@eodfaucet.com

KS266C

Victoria 3"-9" wall mount tub/shower



PART LIST

1. Elbow
2. Faucet body
3. Shower cradle
4. Hose
5. Hand shower

Installation instructions

WARNING: Always turn off hot and cold water before starting.

Use Teflon or pipe compound on all water connections.

A. Place mounting legs on the tub, then tighten the lock nuts from underneath and connect the water supply lines. Place washers and then tighten the coupling nuts on to the mounting legs.

B. Use Teflon tapes on the threads of the mounting legs. Install the faucet body by connecting the end nuts of the water lines on the body to the mounting legs, Tighten the nuts.

C. Install the riser (holder) on to the top connector hole of the faucet body. Tighten the end of the riser.

D. Place a washer between the side hole of the riser and the cone nut of the shower hose and tighten the cone nut.

E. Place a washer between the handheld shower unit and the other end of the shower hose and then tighten the cone nut of the shower hose.

