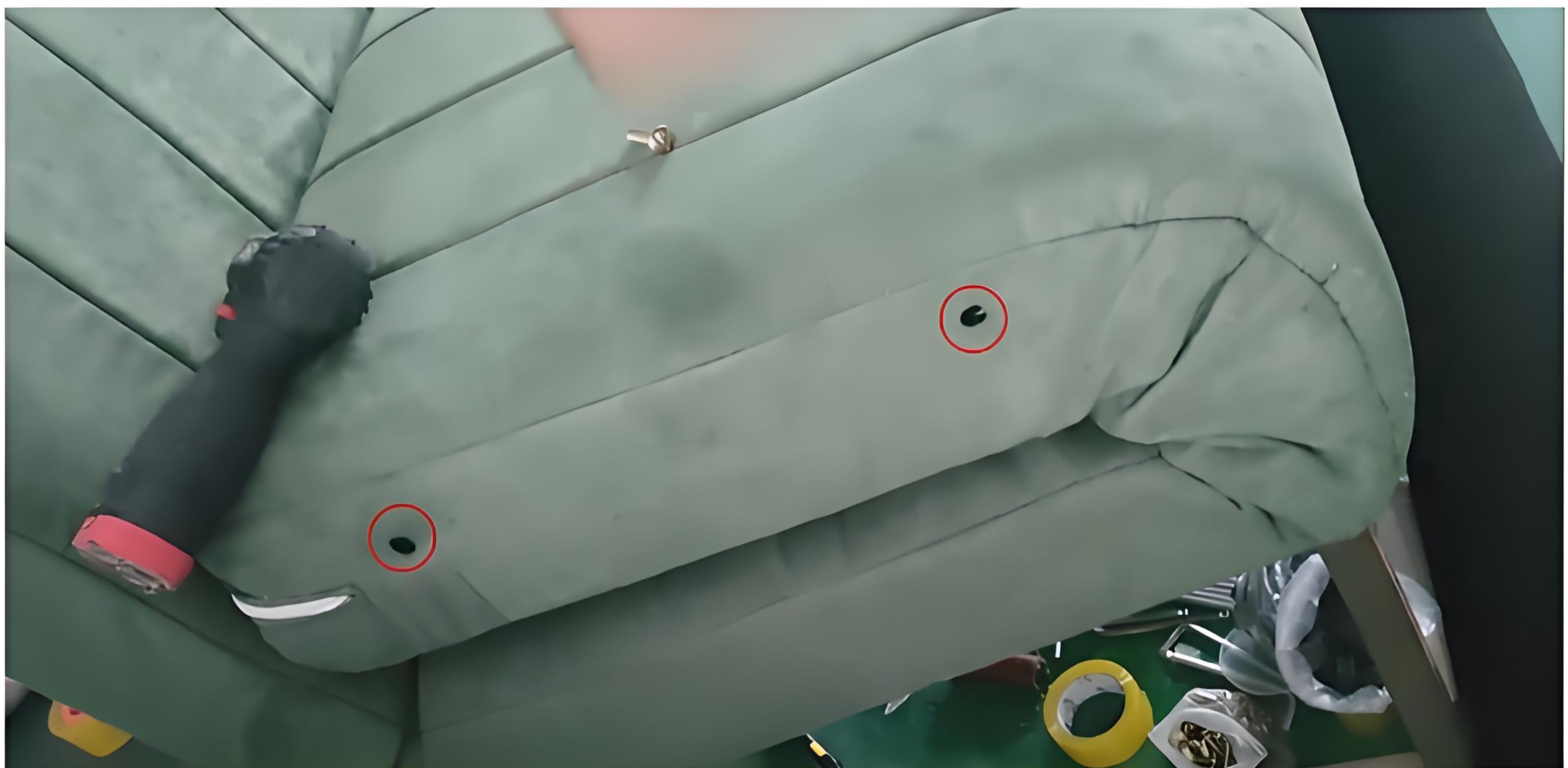


Sofa Bed Assembly instructions



Sofa-Bed Leg Installation Steps

1. Stand the sofa-bed frame on its side so the underside faces you.
1. Align each leg's screws with the pre-drilled holes in the frame and fasten them securely.
3. Repeat for the remaining three legs.

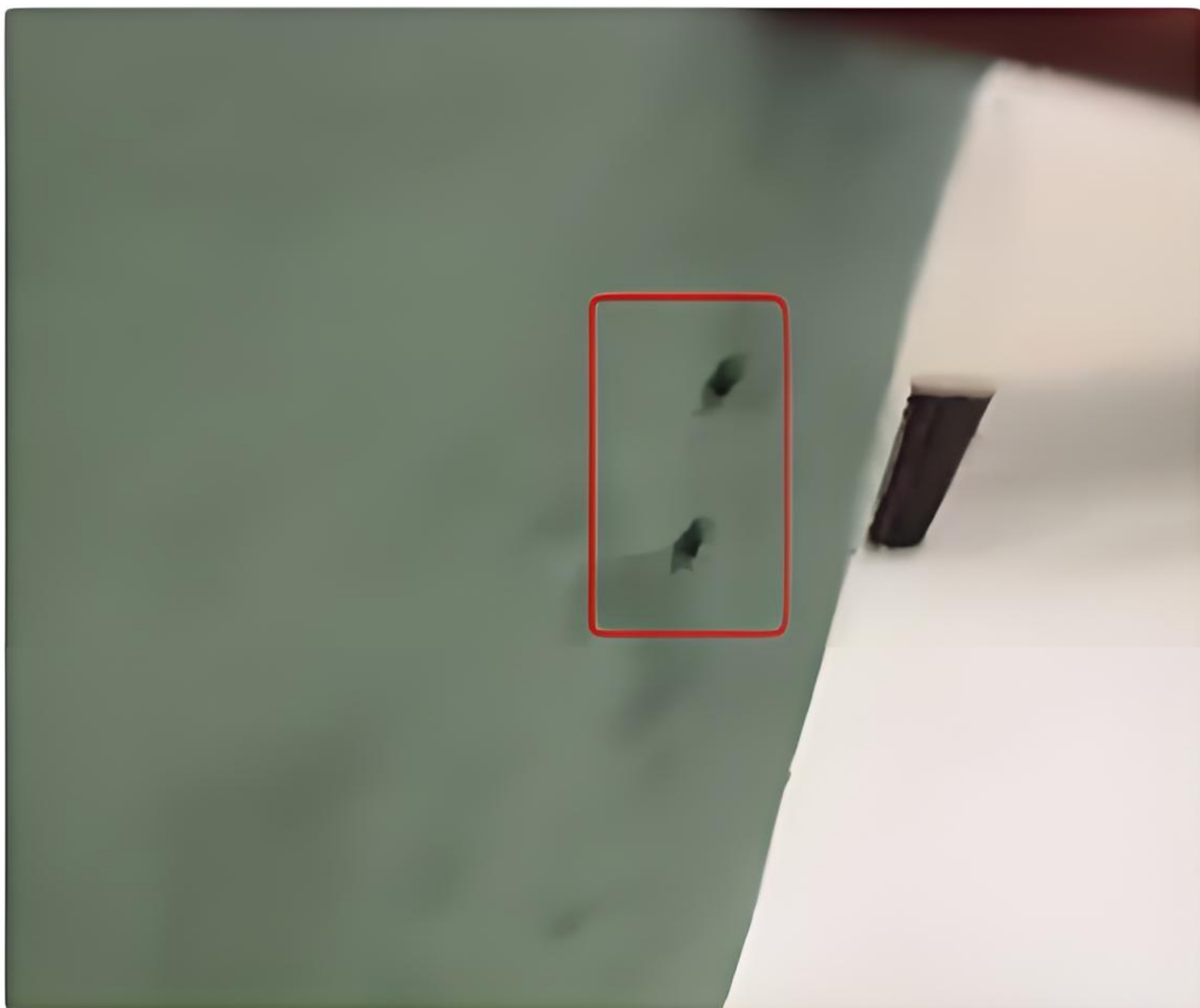


Armrest Installation Guide

There are two pre-drilled holes on each side of the sofa bed



1. Align the armrest bracket with the pre-drilled holes on the seat base.
 2. Pass the supplied screws through the bracket and into the seat frame.
 3. Then, using the tool provided, tighten both screws evenly until the armrest is firmly secured.
- Repeat the same steps to install the other armrest.



Side Table Assembly Instructions

The side table consists of two parts: a support rod and a tabletop.

Pre-drilled holes are provided on both the left and right sides of the sofa base, allowing you to install it on whichever side you prefer.

1. Insert the supplied screws through the support rod and into the sofa frame.
2. Using the tool provided, tighten both screws evenly until the rod is firmly secured.
3. Return the sofa to its upright position, align the tabletop with the rod, and simply insert it into place.