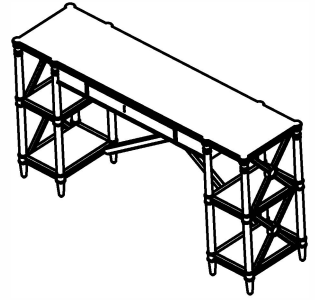


ASSEMBLY INSTRUCTIONS

206-925



TOOLS REQUIRED:

Allen Wrench (supplied, part # A)

BEFORE YOU START:

1. Check the parts against the parts list to make sure all items are present.
2. Assemble your furniture on a soft, flat surface to avoid scratching the finish.
3. CAUTION: Do not over tighten screws, nuts or bolts during assembly.
4. Your furniture may require occasional tightening.

INSTRUCTIONS:

1. Put the table top on the smooth and clean soft surface.
2. Attach Outside Side Panels to Top using Bolt (B), Lock washer (C), Flat washer (D) and Tighten with Wrench(A). As show in Figure 1.
3. Attach Inner Side Panels to Top using Bolt (E), Lock washer (C), Flat washer (D) and Tighten with Wrench(A). As show in Figure 2.
4. Put the Middle Shelves between side panels and fix them by using Bolt (B), Lock washer (C), Flat washer (D) and Tighten with Wrench(A). As show in Figure 3.

Figure 1

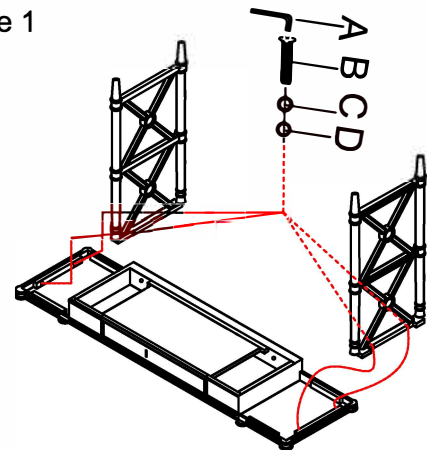


Figure 2

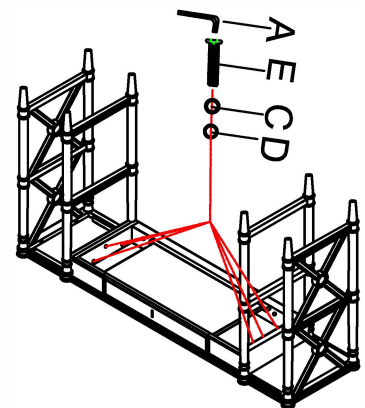
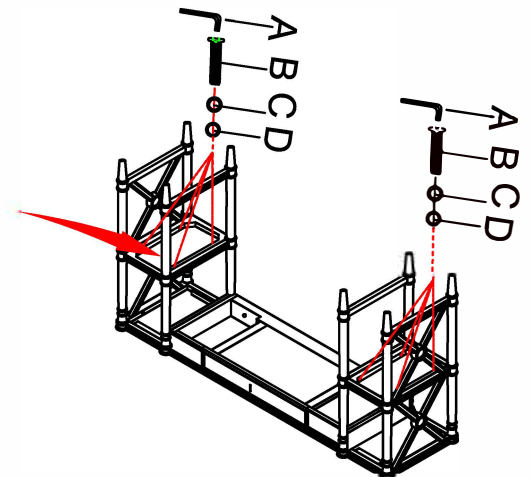


Figure 3



ASSEMBLY INSTRUCTIONS

206-916

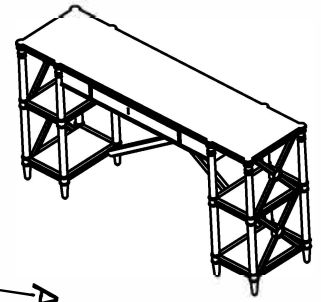


Figure 5

INSTRUCTIONS:

6. Fix the Bottom Shelves by using Bolt (B), Lock washer (C), Flat washer (D) and Tighten with Wrench(A).
As show in Figure 5.
7. Fix the X Cross Bar at back of table by using Bolt (B), Lock washer(C), Flat washer (D) and Tighten with Wrench(A).
As show in Figure 6.
8. To level the table, please adjust the levelers accordingly.
As show in Figure 7.

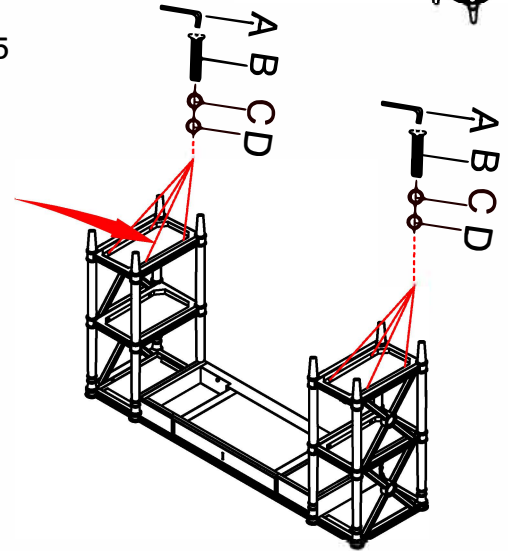


Figure 6

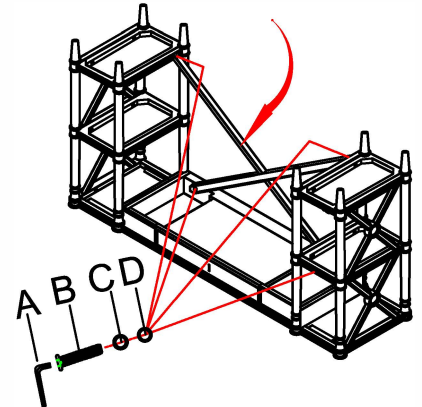
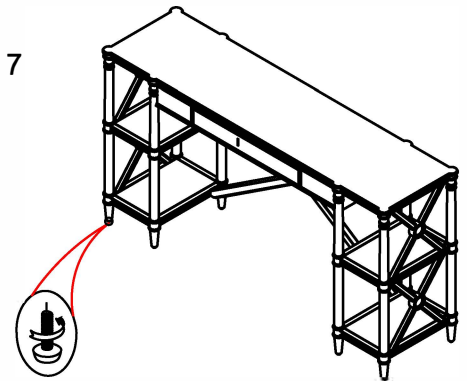


Figure 7



NO	DRAWING	DESCRIPTION	SIZE	Q' ty
A		Allen Wrench	69*27.2*4mm	1pc
B		Bolt	Ø1/4**40mm	24pcs
C		Lock washer	Ø1/4"	30pcs
D		Flat washer	Ø1/4"	30pcs
E		Bolt	Ø1/4**35mm	6pcs