

July Forest

Pure Solid Wood Animal Head Children's Chair Frog, Tiger, Cat

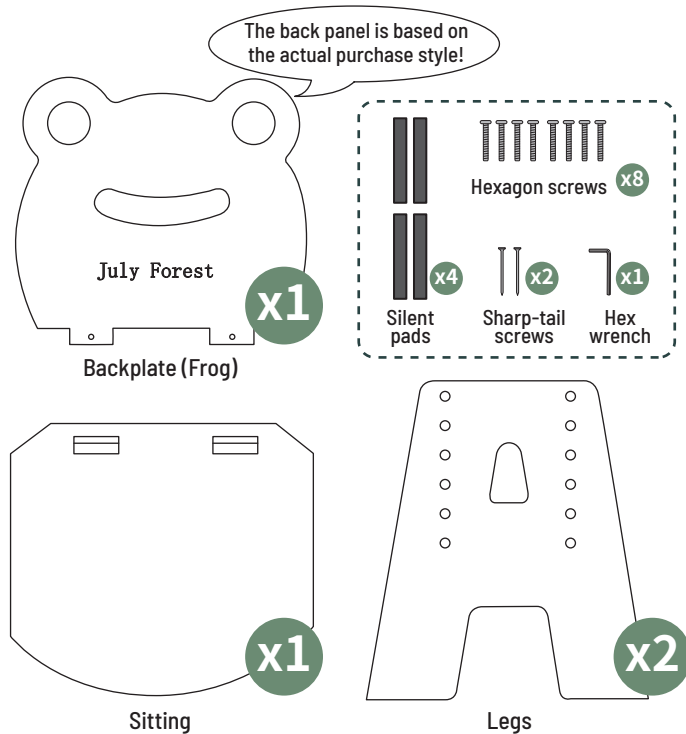
Product Contents:

Reading chair back plate x1 (Frog, Tiger, Cat),
chair legs x2, seat x1, hardware bag x1,
assembly manual x1, warranty x1

Hardware bag contents:

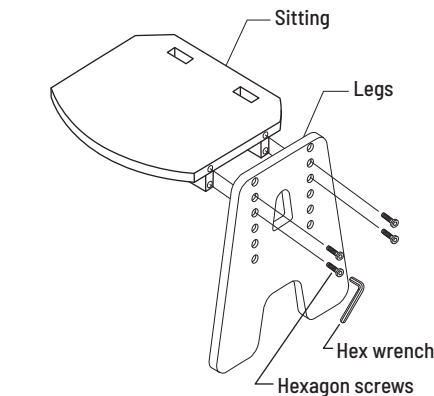
- A. Hex Screws (1/4"X25mm) x8
- B. Sharp tail nut (50mm) x2
- C. Hex wrench x1
- D. Silent Pad x4

※Please bring your own screwdriver for installation※



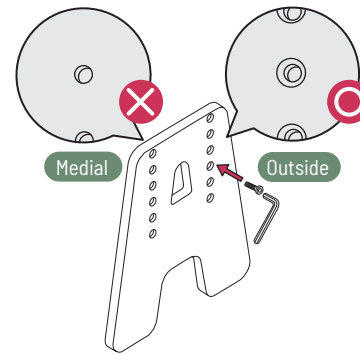
Assembly Flow Chart

The height of the chair surface of the
Pure Solid Wood Animal Head Children's Chair
5 Segments Adjustment: 23/26/29/32/35cm



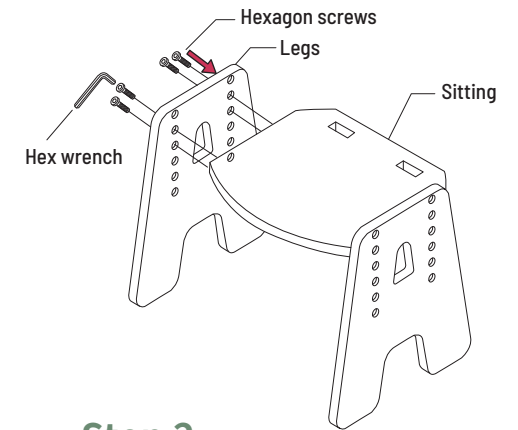
Step 1-1

Take out the seat plate and install the legs, **do not lock it**, the large hole side is facing outward, and use hexagonal screws (1/4"X40mm) to lock in and temporarily fix the legs



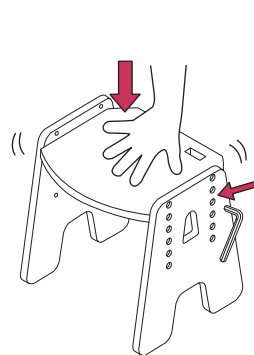
Step 1-2

Note: The large hole (counterbore) must be facing outward, and the hexagon screw is locked from the outside, which will be flat with the board after locking



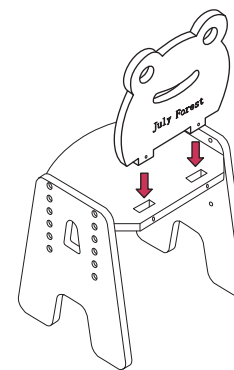
Step 2

Install another leg without locking, with the large hole side facing outward, using hex screws (1/4"X40mm)



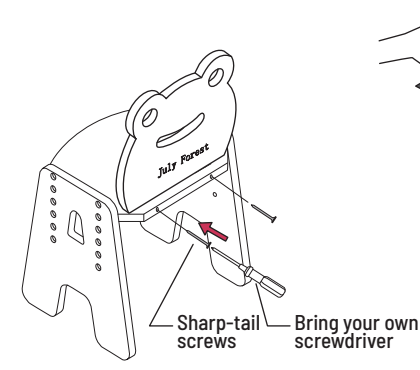
Step 3

After pressing the seat surface, press the seat surface to adjust the balance and lock the seat legs



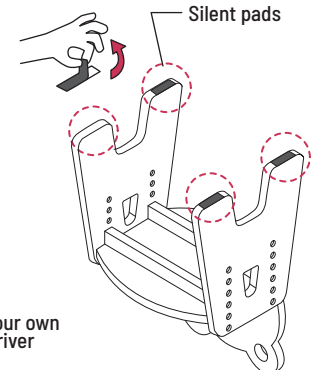
Step 4

Insert the back of the chair into a tight fit, **noting that the logo is on the outside**



Step 5

Use a screwdriver to firmly lock the sharp-tail screw (50mm) on the backrest of the chair
 ※The screw insertion depth is about 0.5 cm (more than half the length of the short side of the hexagonal wrench)



Step 6

Silent pads can be pasted upon request