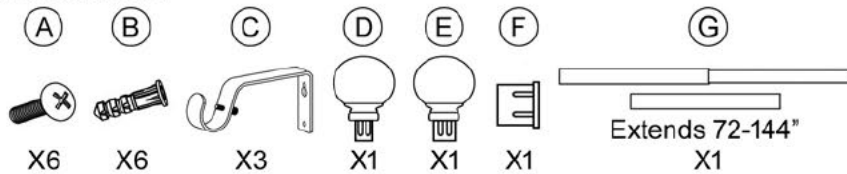


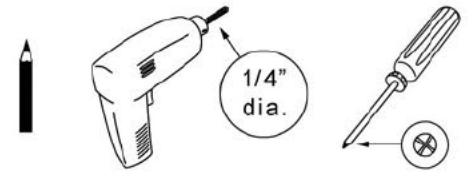
# FOR INSTALLATION USING SCREWS AND WALL ANCHORS

## SET INCLUDES:



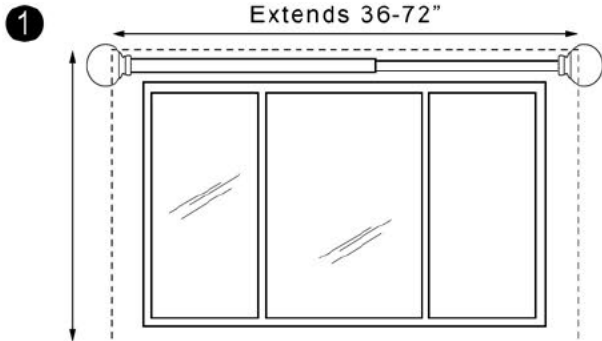
Note: Finial (D w/ smaller post) fits to the smaller diam. rod - Finial (E w/ larger post) fits to the larger diam. rod. Adaptor (F) is used with finial (D) to fit to second larger diam. rod.

## YOU WILL NEED:

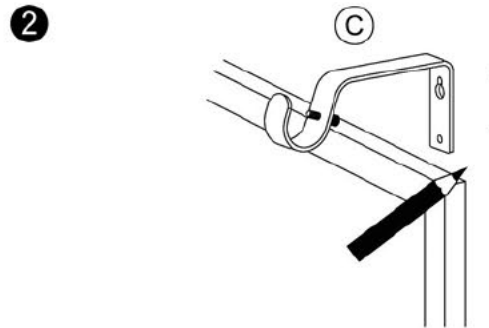


## 1" DRAPERY ROD INSTALLATION INSTRUCTIONS - 72-144" ROD SET

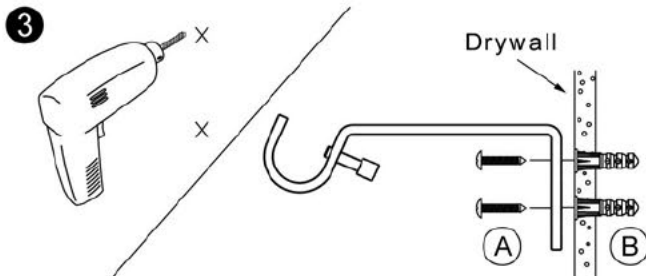
Care Instructions: Clean with a soft cloth. Do not use abrasive cleaning agents, solvents or polishes.



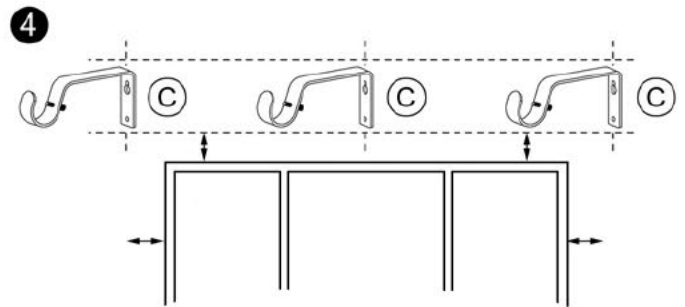
Before installation, measure windows to determine appropriate drapery rod length.



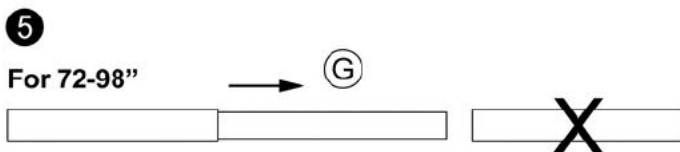
Use bracket (C) as a guide to mark location for mounting screws (A).



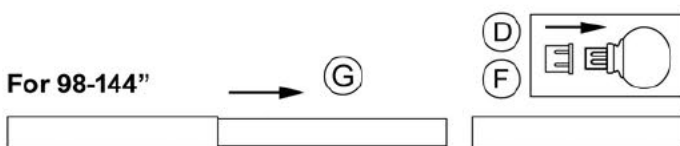
Drill pilot holes into wall with 1/4" drill bit (not included). Insert wall anchors (B) and attach bracket (C) using mounting screws (A). Wall anchors may not be necessary if drilling into studs.



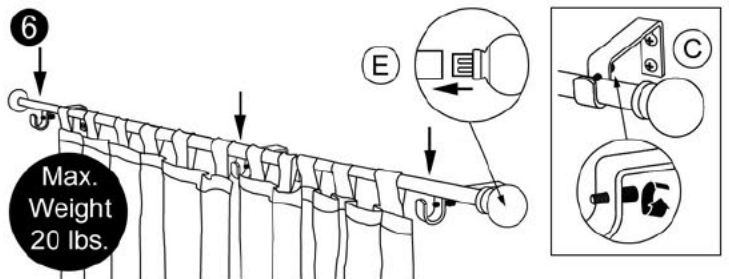
Repeat steps 2-3 for additional brackets. Use level if necessary.



Use 2 telescopic rod sections (1 larger diam. and 1 smaller diam.) Insert finial (D) into the smaller diam. rod.



Use 3 telescopic rod sections. Extend the smaller diam. rod that is nestled in the larger diam. rod. Then insert the smaller diam. into the second larger diam. rod section. Attach adaptor (F) to finial (D) and insert into either of the larger diam. rods.



Place drapery panels (not included) onto drapery rod and extend to desired length. Hang rod on brackets. Insert finial (E) into the end of the rod and tighten the set screws on the brackets (C).