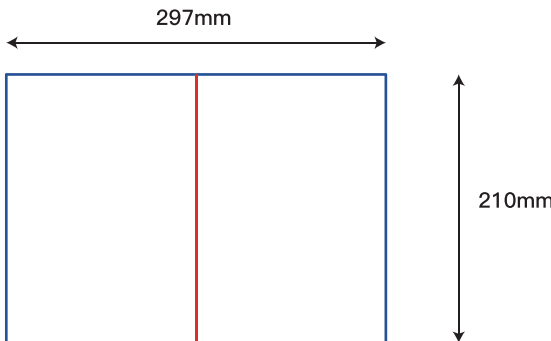


注：此页为技术说明，非印刷内容

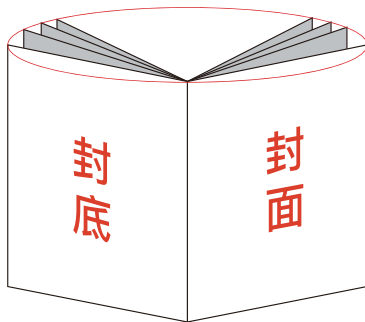
刀模线：——

内折线：——

展开尺寸图：



装订效果图：



C=87; M=48; Y=82; K=9

技术要求：

- 1、材质：105g 铜板纸
- 2、展开尺寸：A4，如图所示装订成型为 A5，16P
- 3、颜色：四色
- 4、印刷：印刷图档见后续页，双面印刷
- 5、装订方式：骑马钉

符号标识

版本变更

XXX

关键尺寸

±XXX

编号

图#

参照尺寸

(.XXX)

名称

SLIM01-Manual-HK

图号

材料

规格

PLM号

860-04196-00

投影法

第一角投影法



版本

重量G

比例

V0

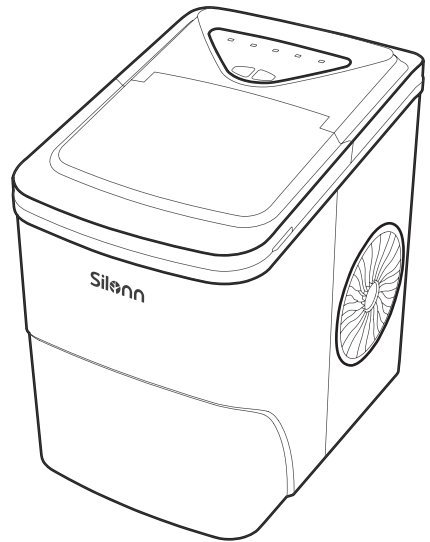
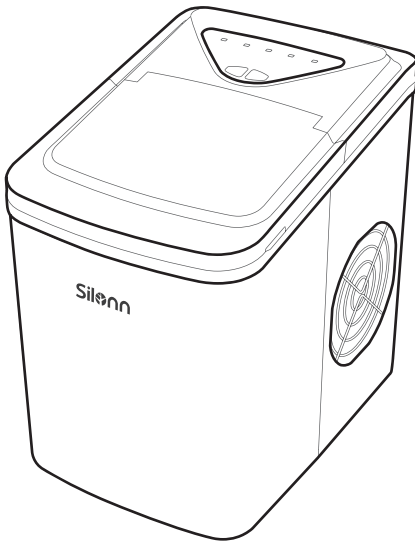
共 1 页 第 1 页

倍思奇创新科技（深圳）股份有限公司

除 非 另 有 说 明	标记	处数	ECO#	发行时间
0-30 ±1	设计		PM	
30-150 ±2	绘图	Sinn	日期	2025/11/19
150-300 ±3	审 批	Bella	日期	
300-450 ±4	除去所有利边，尖点，毛刺			
>450 ±5				

Ice Maker

SLIM01 v0



Silonn

877-546-8603
(US/CA) Mon-Fri 8am - 8pm (CST)

support@silonn.com
www.silonn.com

IMPORTANT SAFETY INFORMATION

To reduce the risk of injury or property damage, please follow these safety precautions.

WARNING



- Voltage power from outlet must match specifications on appliance nameplate.



- This appliance **must be** grounded.



- Using an extension cord may cause overheating and increase the risk of fire.

If an extension cord **MUST** be used:

- 1) **Only use an** extension cord with grounding plug.
 - 2) The marked rating of an extension cord **must be** equal to or greater than the rating of this appliance.
- **Do not** operate if any component, including the cord or plug, is damaged.
 - Unplug the unit before cleaning by hand.



- Only responsible and capable adults should operate the ice maker.
- **Do not** place the power cord where it could be pulled by children or pose a tripping hazard.
- Children should not be left unattended near the ice maker during operation.



- **Do not** use water that is micro-biologically unsafe or of unknown quality.



- **Do not** remove any safety, warning, or product information labels from the unit.



- **Do not** touch the evaporator with your hands while the ice maker is operating.
- **Do not** plug in or unplug the unit with wet hands.



- **Never** put flammable, explosive and corrosive articles into the ice maker.



• The unit **must be** placed and set up according to installation instructions before use. The unit is for indoor household use only.



- **Do not** store or use flammable vapors or liquids near the unit.
- **Do not** immerse any part of the unit in water.



• **Do not** attempt to disassemble, repair, modify or replace any part of the ice maker unless permitted by the manufacturer.



WARNING

FIRE OR EXPLOSION HAZARD Flammable Refrigerant

This unit contains an isobutane refrigerant, also known as R600a, a natural gas with high environmental compatibility. However, it is also combustible. Adhere to the warnings below to reduce the risk of injury or property damage.

WARNING: When positioning the appliance, ensure the supply cord is not trapped or damaged.

WARNING: Do not locate multiple portable socket-outlets or portable power supplies at the rear of the appliance.



1. When handling, installing, and operating the unit, care should be taken to avoid damage to the refrigerant tubing.



2. Keep ventilation openings around the unit's enclosure clear of obstruction.



3. **Do not** place the unit near heat sources such as an oven.



4. Ensure a minimum of 6" of clearance around the side and back walls of the unit for proper air circulation.



5. **Do not** place the unit in direct sunlight.



6. Risk of fire or explosion. Flammable refrigerant used. **Do not** use mechanical devices to defrost the unit. **Do not** puncture or damage refrigerant tubing.



7. Only dispose of the unit according to Federal and Local Regulations. Contact your local authorities for the environmentally-safe disposal of the unit.

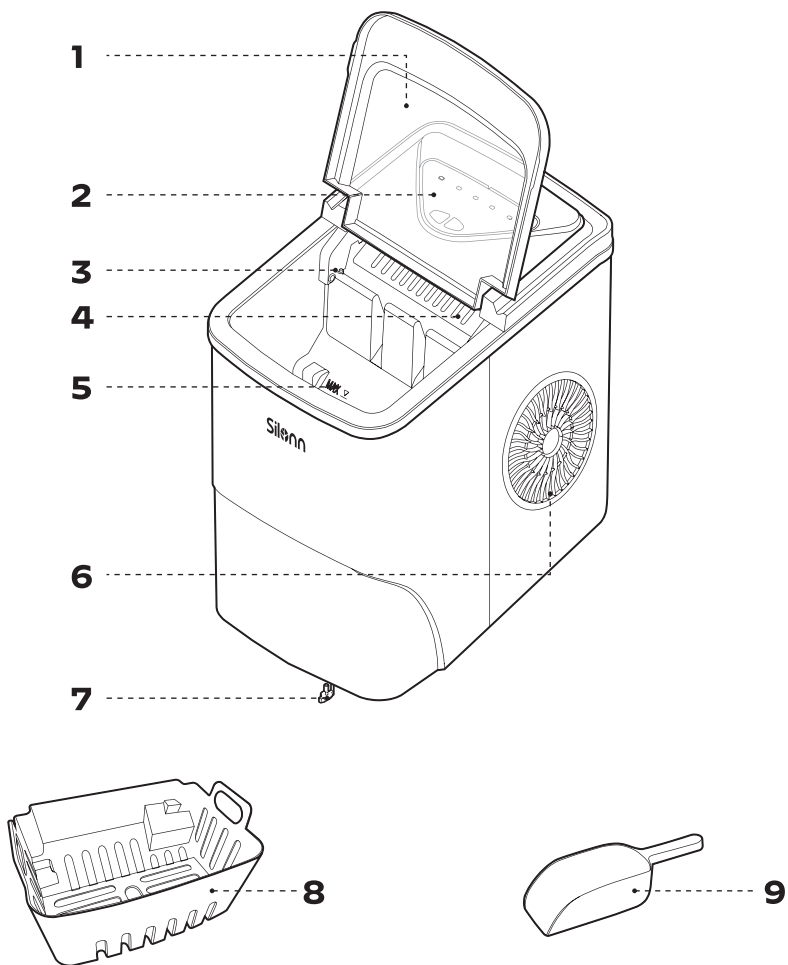


ATTENTION

- The ice maker parts should be replaced with parts that have the same specifications and the maintenance should be done by authorized service personnel, to minimize the risk of fire hazards due to incorrect parts or improper operation.
- The ice maker should be installed in accordance with the Safety Standard for Refrigeration Systems, ASHRAE 15.
- The ice maker should not be installed in hallways or corridors of public buildings.

SAVE THESE INSTRUCTIONS.

PRODUCT INTRODUCTION

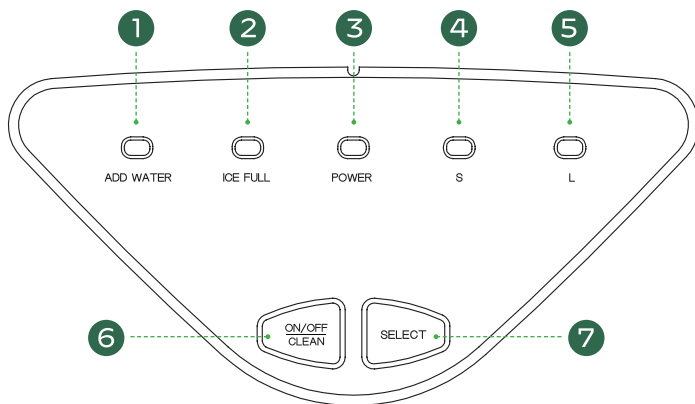


- 1.** Large Viewing Window
- 2.** Control Panel
- 3.** Ice Full Sensor
- 4.** Ice Shovel
- 5.** Maximum Water Fill Line

- 6.** Air Exhaust Fan
- 7.** Drain Plug
- 8.** Ice Basket
- 9.** Ice Scoop

* The appearance may vary for different products.

CONTROL PANEL INTRODUCTION



	Icon/Button	Function
1	ADD WATER	The indicator light turns red when the water tank is low.
2	ICE FULL	The indicator light turns red when the ice basket is full.
3	POWER	The indicator light turns green when on and flashes when powering up or down.
4	S	The indicator light turns green when small ice mode is selected.
5	L	The indicator light turns green when large ice mode is selected.
6	ON/OFF CLEAN	Press this button to turn the ice maker on.
		Press this button to turn the ice maker off.
		In standby mode, press and hold the this button for 5 seconds to enter self-cleaning mode. The indicators "S" and "L" will flash in green consecutively.
7	SELECT	Comfirms large ice mode or small ice mode.

USING YOUR ICE MAKER

BEFORE FIRST USE

1.

Verify all parts and ice maker accessories were received.

Missing parts? Contact Customer Service.



Stand upright for 24hrs.



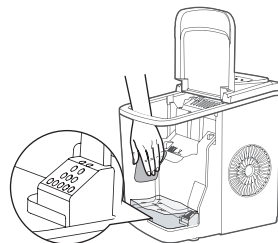
Use in locations
50°F ~ 90°F
(10°C ~ 32°C).



2.

Carefully **remove the protective film** and clean the ice maker thoroughly before first use.

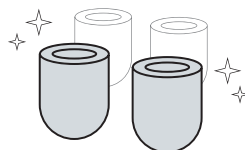
Note: Make sure the drain plug is installed in place.



The evaporator drops 9 pcs of ice in each set. When using for the first time, or if the machine has not been used in a long time, please discard the first 4 cycles of ice.



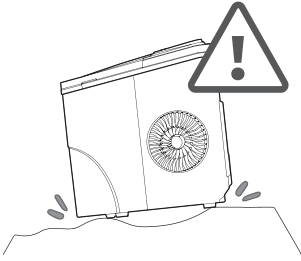
Due to temperature variations and other factors, ice quality should become stable after the first 1-3 cycles.



More Cycles = Perfect Shape

3. What Not To Do!

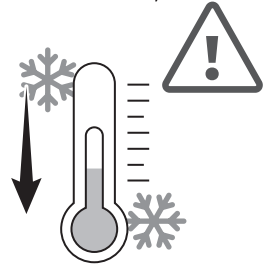
Unstable base.



No other liquids
(Drinking water only).



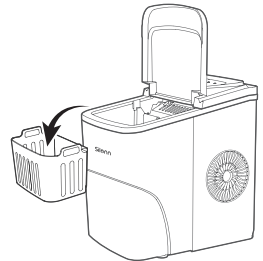
Do not use in high or
low temps, especially
lower than 41°F/5°C.



HOW TO USE YOUR ICE MAKER

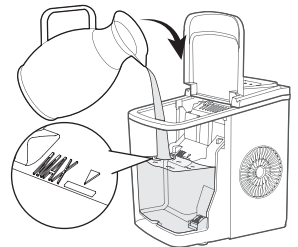
1.

Open the cover and remove
the ice basket.



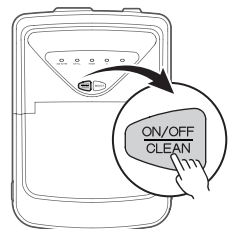
2.

Add water. Do not exceed
the "MAX" water line. Then
put the ice basket back into
the machine.



3.

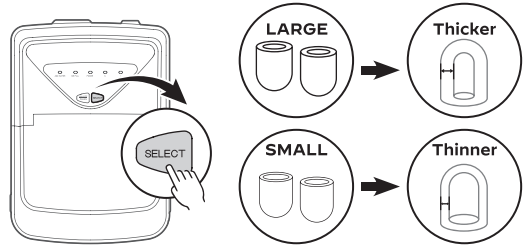
Press the **ON/OFF** button.



4.

Press the **SELECT** button to choose ice cube size.

Tip: It is recommended to choose the small ice mode when in low temperature.



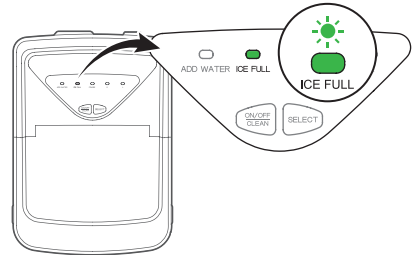
5.

Wait **6min-13min**. The ice-making time depends on room temp and water temp.



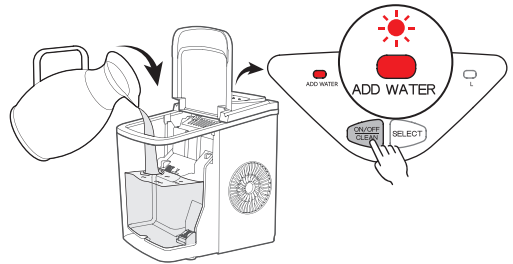
DONE:

The “ICE FULL” indicator light turns on when the ice basket is full.

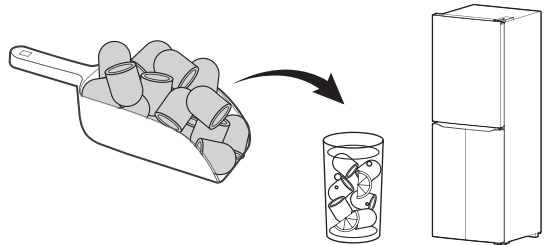


REFILL:

When the “ADD WATER” indicator light turns on, ice-making will stop. Refill water, then press the **ON/OFF** button to restart the machine.



Remove ice cubes before they start to melt. Some water may drip out when removing the ice basket. Use a dry towel to keep water from dripping on surfaces.



Note: It takes a little more time to restart the ice maker after accidental power-off.

CLEANING AND MAINTENANCE

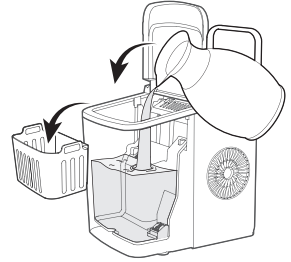
To keep your ice tasting fresh and the unit looking great, we recommend cleaning the unit once per week.

SELF-CLEANING (30-MIN PROCESS)

1.

Remove the basket and add water to the "MAX" water line.

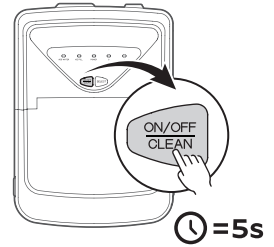
Note: In areas with hard water, professional ice maker detergent can be used to clean the ice maker. Leave the detergent in the machine for 12 hours.



2.

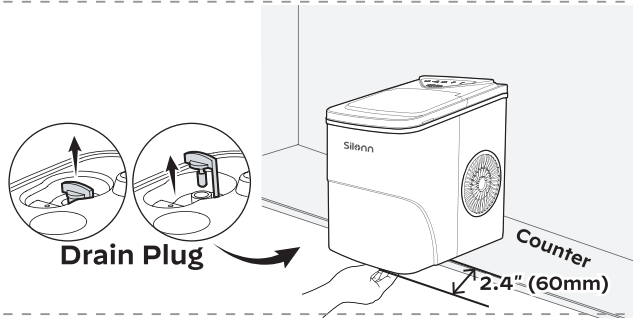
IN STANDBY MODE:

Press and hold the **ON/OFF/CLEAN** button for 5 sec to start self-cleaning.



3.

Drain excess water over sink.



4.

Clean the ice basket with warm water, then put it back into the machine.

Wipe the exterior with a cloth using mild dishwashing soap.

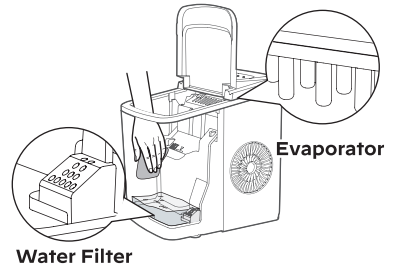


MANUAL CLEANING

Turn off the unit and disconnect from power before cleaning.

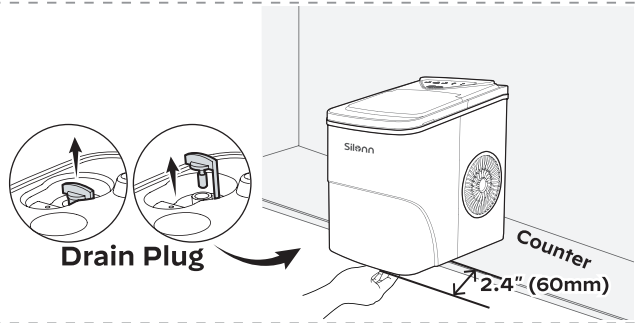
1.

Clean using a soft cloth with water-vinegar mixture or citric acid water mixture. Perform regular cleaning of the water filter, the ice shovel, the evaporator, and other small corners to prevent residue build-up.



2.

Drain excess water over sink.



3.

Clean the ice basket with warm water, then put it back into the machine.

Wipe the exterior with a cloth using mild dishwashing soap.



⚠ DO's & DON'Ts while cleaning and maintaining

- **Do not** use organic solvent, boiled water, strong acid and strong alkali etc. for cleaning. This will cause corrosion of the evaporation column.
- When cleaning the evaporator, be careful to keep the vertical prongs level. If the prongs are not level, the ice cubes may stick together during use.
- Considering the wide range of water quality across different regions, it is recommended to perform regular manual cleaning.

- Limescale can easily form if the ice basket is submerged in water for a long period of time. Drain water if the machine is not in use.
- It is recommended to **drain the water tank** at least once every three days.
- When the unit is not to be used for a long duration, **drain** the water completely & dry the interior.
- **Store** in a well-ventilated area.

PRODUCT SPECIFICATIONS

	SLIM01	SLIM01B (W/R/S/G1)
Voltage/Frequency	120V/60Hz	120V/60Hz
Ice-Making Current	1.7A	1.7A
Ice-Harvesting Current	2.0A	2.0A
Working Power	≤160W	≤160W
Water Tank	0.53 gal (2L)	0.53 gal (2L)
Ice-Making Rate	26 lbs (11.8kg) per Day	26 lbs (11.8kg) per Day
Ice Shape	Bullet	Bullet
Ice Size	Small or Large	Small or Large
Material	ABS, PP, Stainless Steel	ABS, PP

TROUBLESHOOTING

Problem	Possible Causes	Solution
Poor ice shape or quality.	Poor heat dissipation.	Leave a 6" clearance on all sides of the ice maker for ventilation.
	Poor water quality or dirty water tank.	Use cleaner water or clean the water tank.
	The water or ambient temperature is too high, causing longer ice-making time.	Please run the ice maker in a location below 90°F and add colder water.
	Evaporator deformation.	Please contact customer service.
Ice maker creating loud noise.	If the ice maker has not been cleaned for a long time, a residue may form around the inlet of the water pump.	Run the self-cleaning program using professional ice maker detergent and leave the detergent in the machine for 12 hours to remove scale.
		Clean every week using mild cleaning agents.
	Lack of water to pump will create noise when pumping water.	Add more water.
	Machine overload.	The water temperature should be 45°F - 90°F.
		Maintain 6" (15cm) distance between the hot air outlet and the wall.
	Fan or ice maker is damaged.	Please contact customer service.
Water pump is damaged.		

Problem	Possible Causes	Solution
“ICE FULL” indicator light is on.	Ice is blocking the infrared sensor.	Empty the ice basket.
	Infrared sensors do not work.	Wipe clean the infrared sensors, or long press the SELECT button for 5 seconds to force the ice maker to cycle around 10 times. Contact customer service if the infrared sensors still don't work.
Ice sticks together.	Making ice takes too long.	Stop making ice. After the ice melts, restart and try again.
	The water temperature is too low.	Fill with water temperatures between 46°F and 77°F.
	Evaporator deformation.	Please contact customer service.
Not making ice.	If the ice maker has not been cleaned for a long time, a residue may form around the inlet of the water pump.	Run the self-cleaning cycle using professional ice maker detergent and leave the detergent in the machine for 12 hours to remove scale.
	Ambient or water temperature is too high.	Keep ambient temperature less than 90°F and fill with cold water.
	Water pump is damaged.	Please contact customer service.
	Refrigerating system leaking.	
	Refrigerating system blocked.	
	The fan stopped working.	
	The wires are loose.	
The gears in the motor are broken.		

Problem	Possible Causes	Solution
The “ADD WATER” indicator light is on.	Low water level or not enough water.	Refill water, press the ON/OFF button, then restart and try again.
	Water screen blocked at the bottom of the water reservoir.	Run the self-cleaning cycle.
	Pump malfunction.	Please contact customer service.
	Water detector malfunction.	

WARRANTY INFORMATION

30-DAY LIMITED WARRANTY

To provide customers with a quality shopping and user experience, the unit can be replaced or returned for a full refund within the 30-day period from the date of purchase.

30-DAY TO 1-YEAR LIMITED WARRANTY

After the 30-day warranty has expired, a 1-year warranty from the date of purchase that covers product replacement is automatically activated. Please note that proof of purchase is required for all warranty claims.

30-DAY TO 1-YEAR WARRANTY LIMITATIONS

This warranty does not cover:

- Any condition resulting from incorrect or inadequate maintenance or care.
- Damage resulting from misuse, abuse, negligence, accidents, or shipping damage.
- Dissatisfaction due to buyer’s remorse.
- Normal wear and tear.
- Damages incurred after initial transportation.

