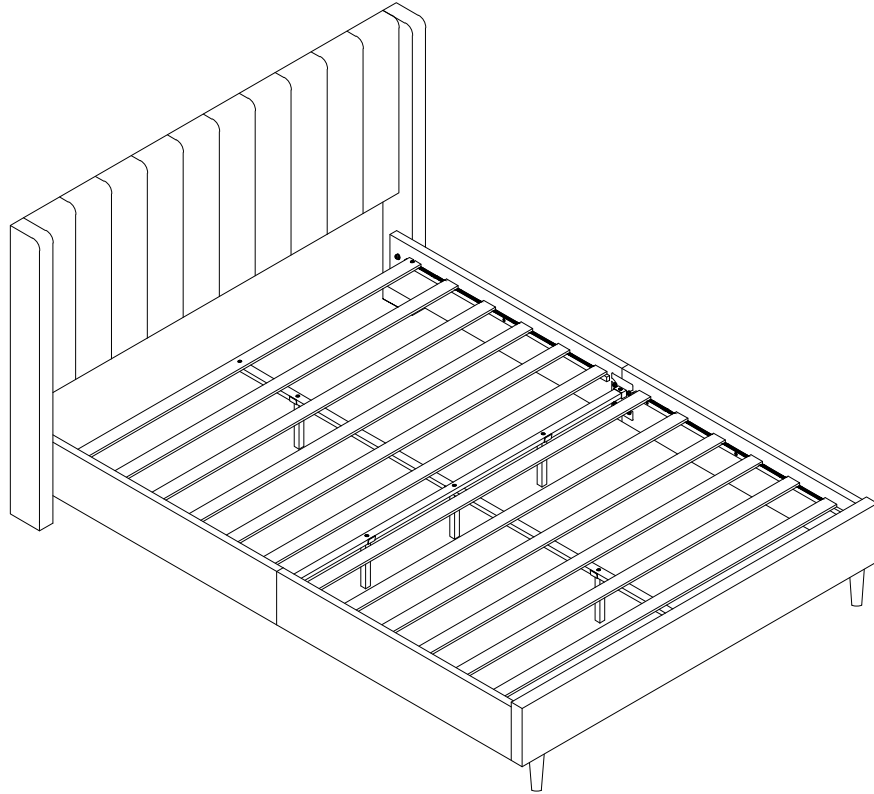
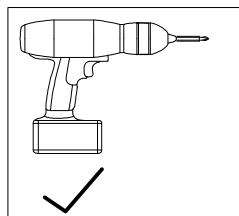


STANDARD BED

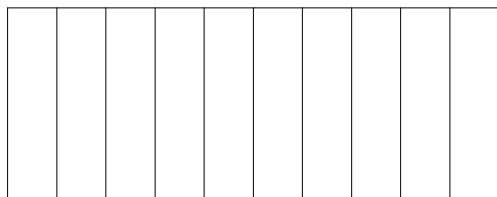


IMPORTANT NOTE

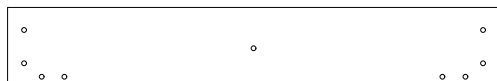
1. **ALL OTHER PART INSIDE THE HEADBOARD
PLEASE OPEN THE ZIPPER OF HEADBOARD, AND TAKE OUT ALL
OTHER PART BEFORE ASSEMBLY.**
2. FOR THE PROTECTION OF YOUR FURNITURE, PLACE ALL PARTS ON A
CLEAN AND SMOOTH SURFACE TO PREVENT ANY DAMAGE.
3. DO NOT USE POWER TOOLS TO ASSEMBLE THE BED.
4. PLEASE PERIODICALLY CHECK ALL FITTINGS AND RE-TIGHTEN AS
NECESSARY.
5. DO NOT USE THE BED UNLESS ALL BOLTS AND SCREWS ARE
FIRMLY SECURED.
6. YOU CAN ASSEMBLE IT WITH OUR PACKAGING TOOLS OR WITH A.



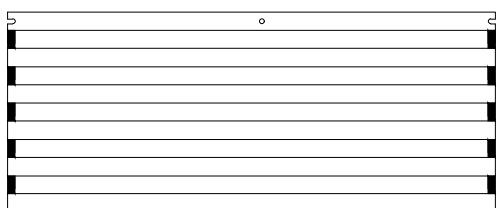
PART LIST



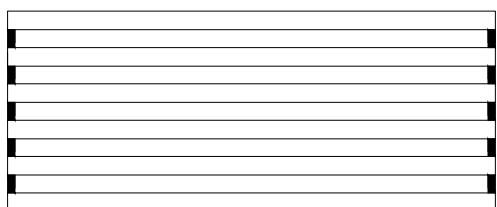
① x 1pc



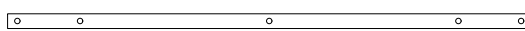
② x 1pc



③ x 1pc



④ x 1pc



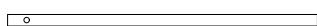
⑤ x 1pc



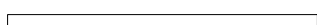
⑥ x 1pc



⑦ x 1pc



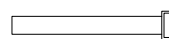
⑧ x 2pcs



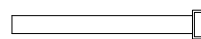
⑨ x 2pcs



⑩ x 2pcs



⑪ x 3pcs



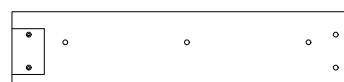
⑫ x 2pcs



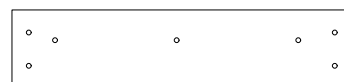
⑬ x 2pcs



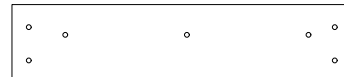
⑭ x 1pc



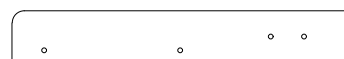
⑮ x 1pc



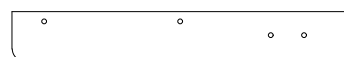
⑯ x 1pc



⑰ x 1pc



⑱ x 1pc



⑲ x 1pc



⑳ x 2pcs

HARDWARE LIST



H1 M5 x 1pc



H2 M8x20mm x 8pcs



H3 M8x25mm x 14pcs



H4 M8x40mm x 21pcs



H5 M8x35mm x 4pcs



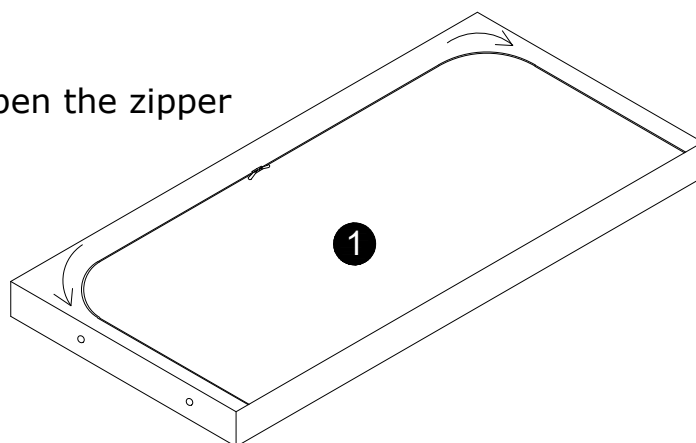
H6 M8 x 17mm x 20pcs



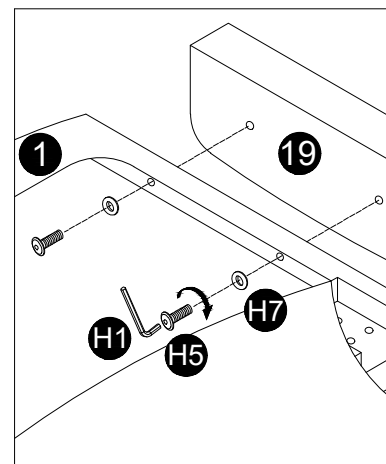
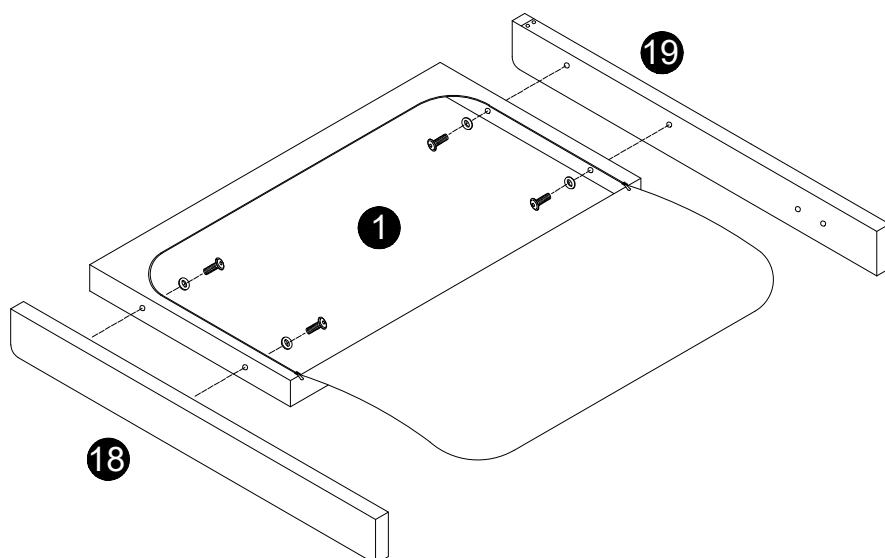
H7 M8 x 22mm x 8pcs

1 **NOTE:** PLEASE OPEN THE ZIPPER ON THE BACK OF **1** AND TAKE OUT THE PARTS.

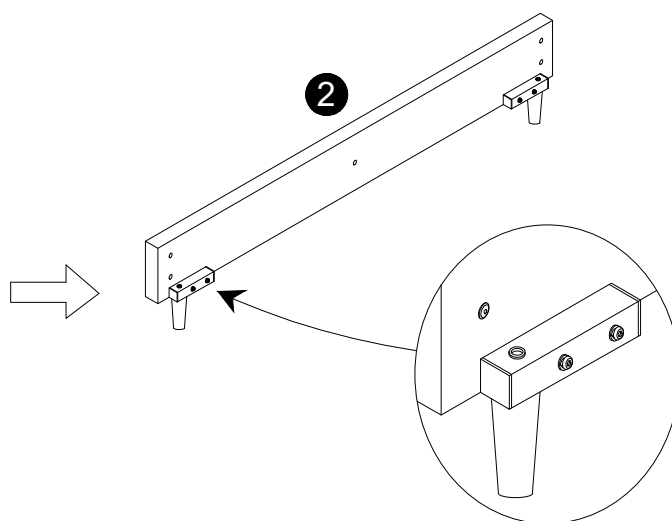
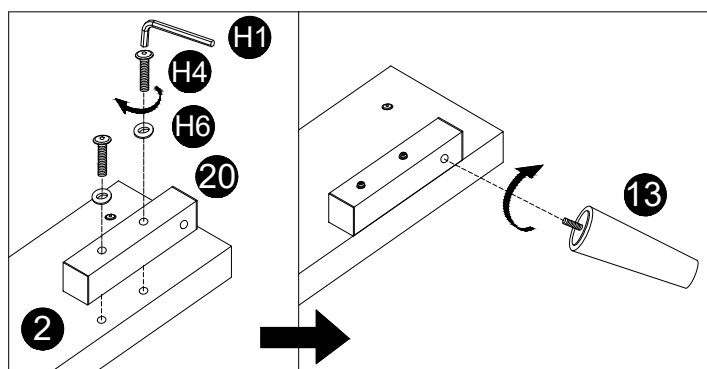
Open the zipper



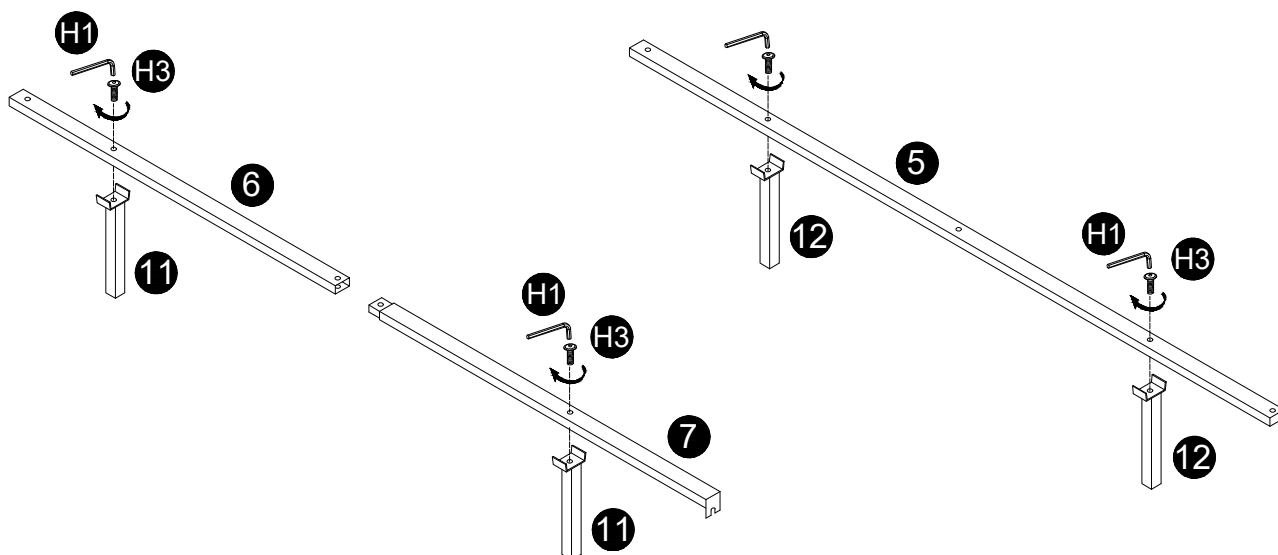
2



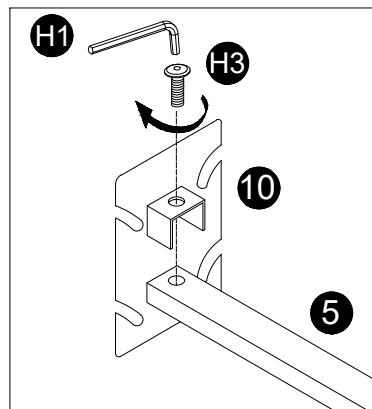
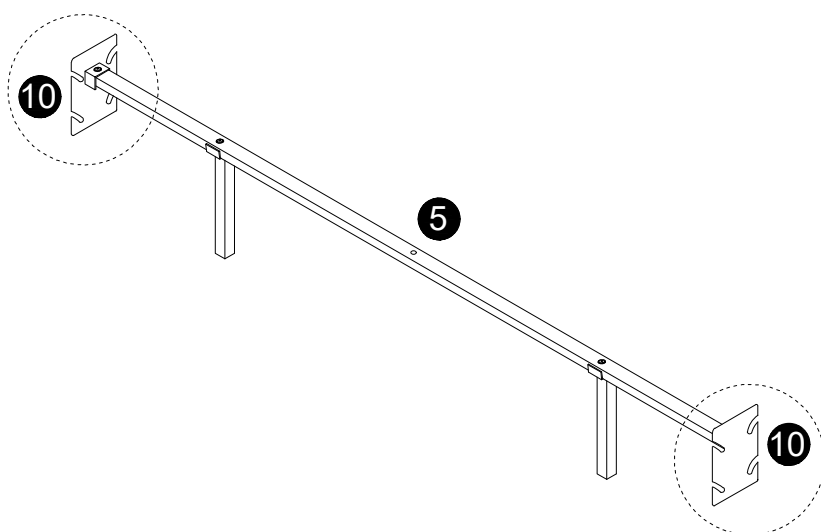
3



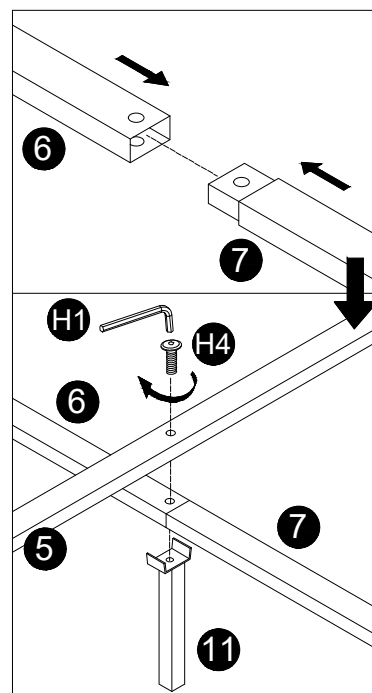
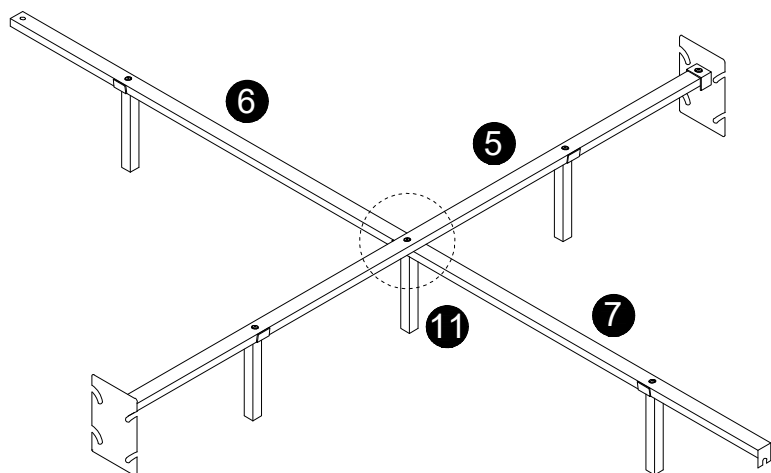
4



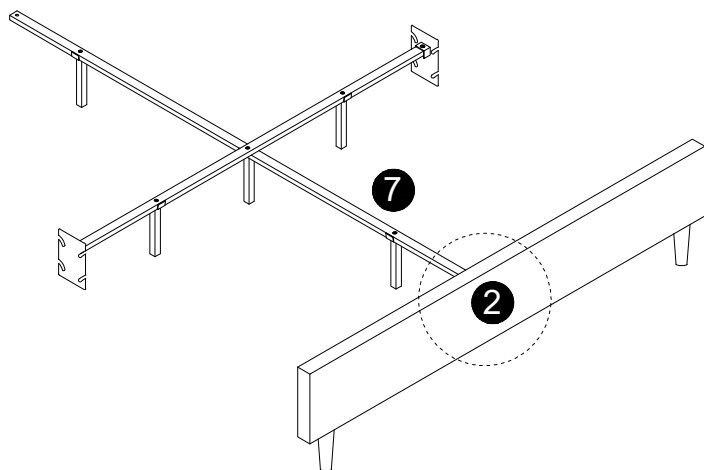
5



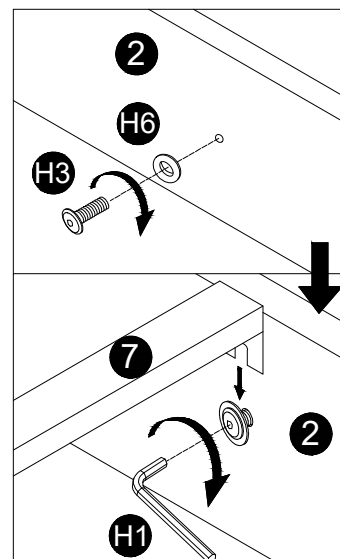
6



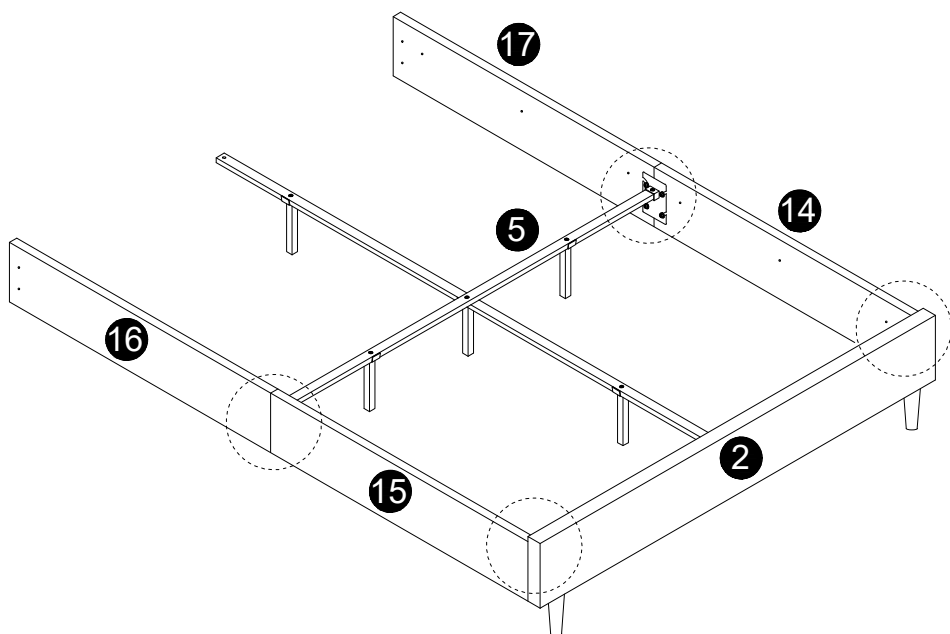
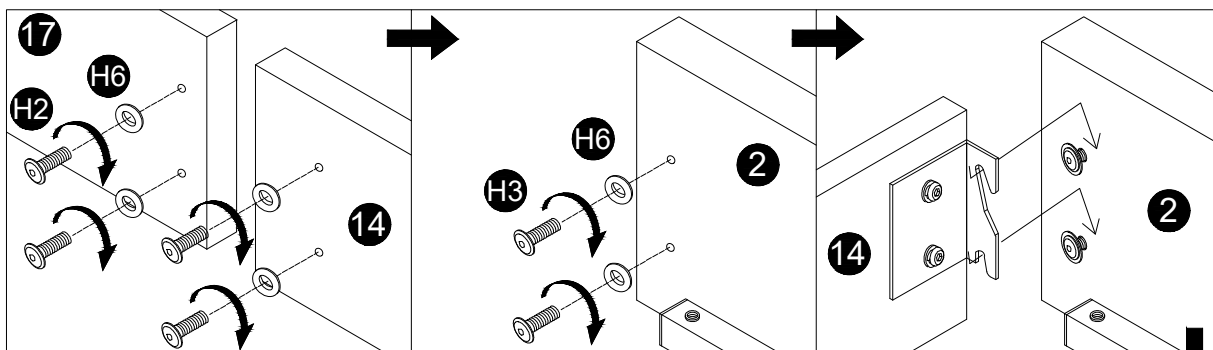
7



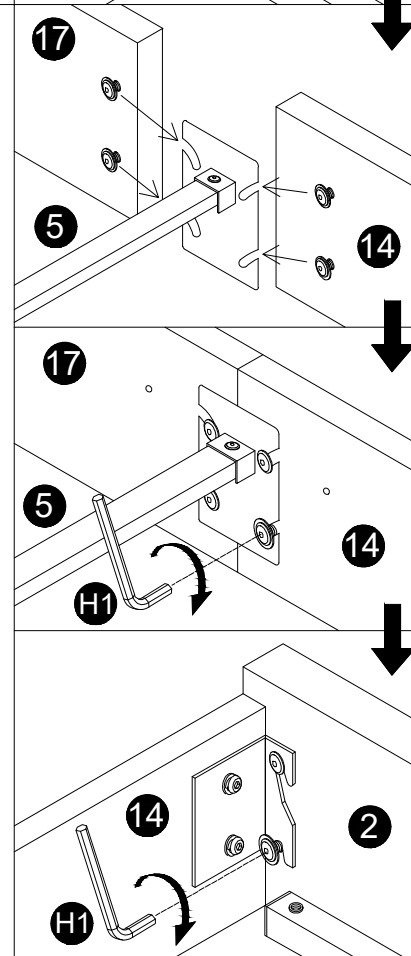
Do not fully tighten fixings!



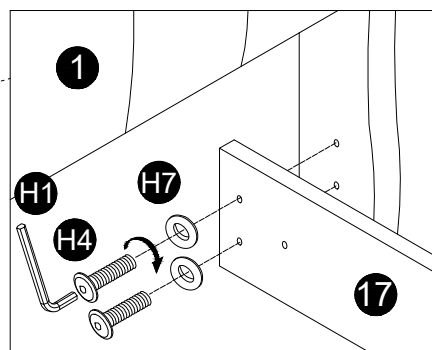
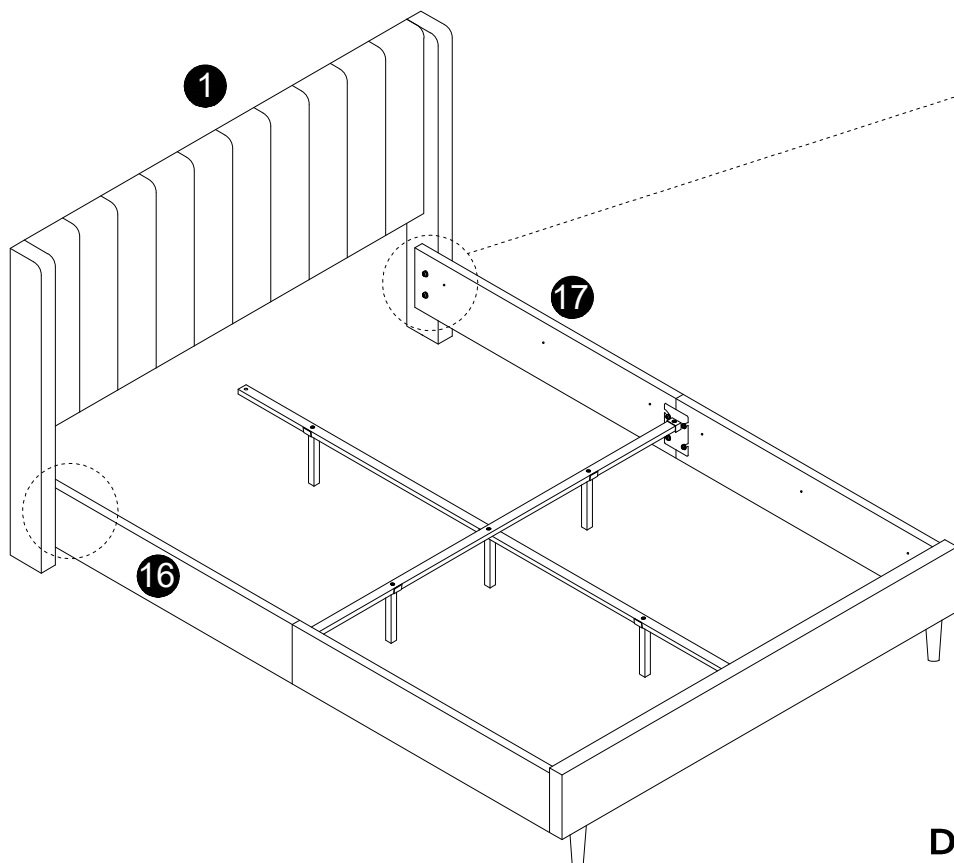
8



Do not fully tighten fixings!

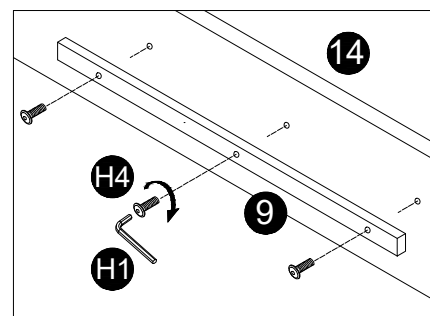
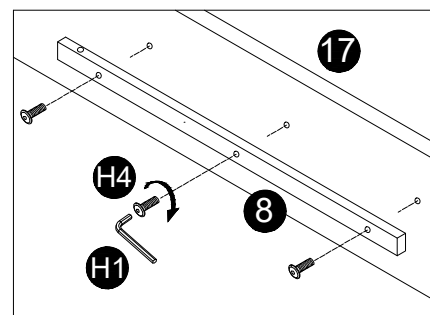
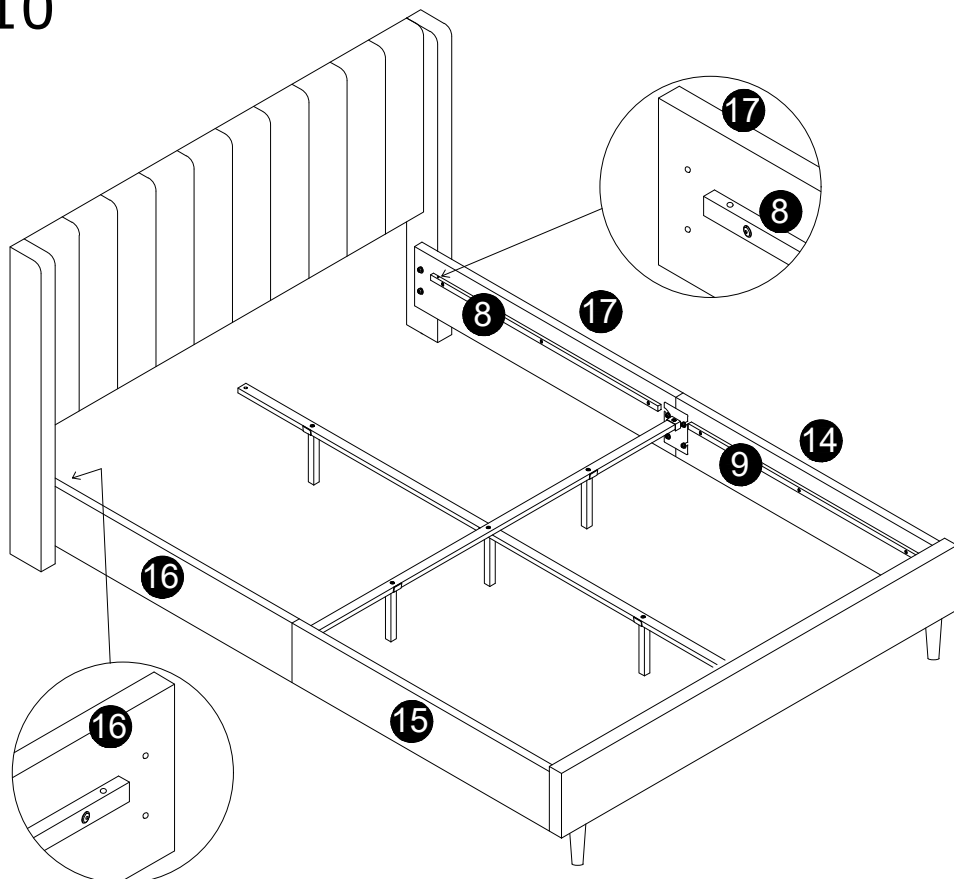


9

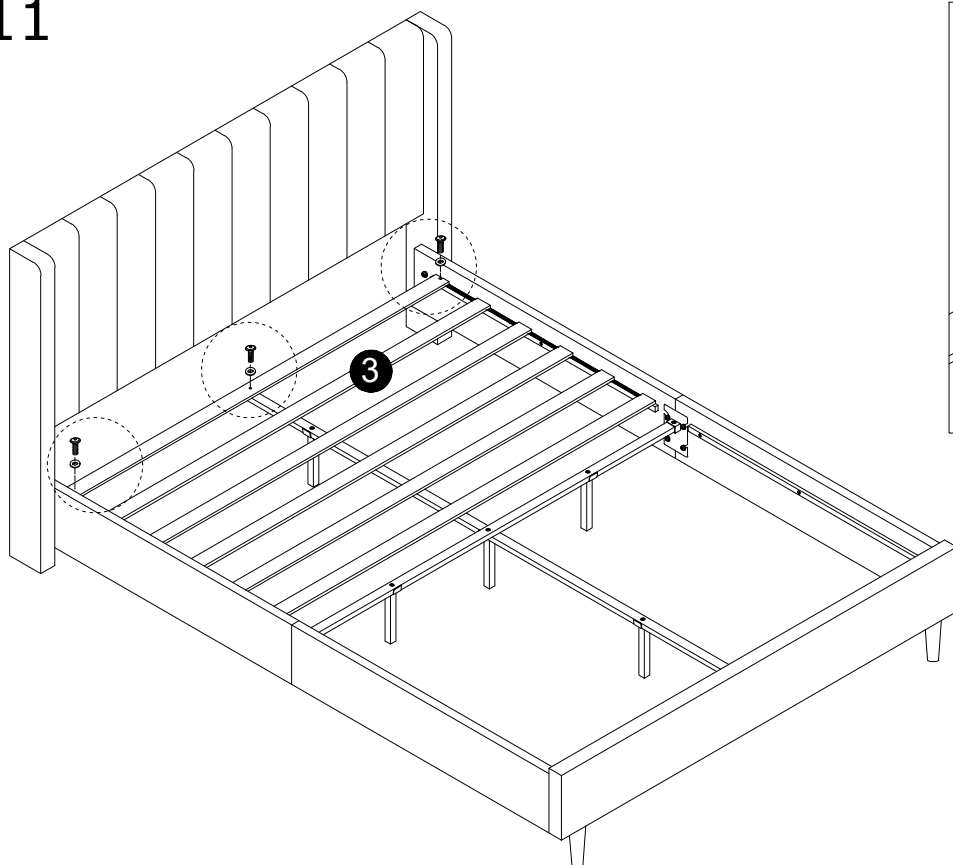


Do not fully tighten fixings!

10

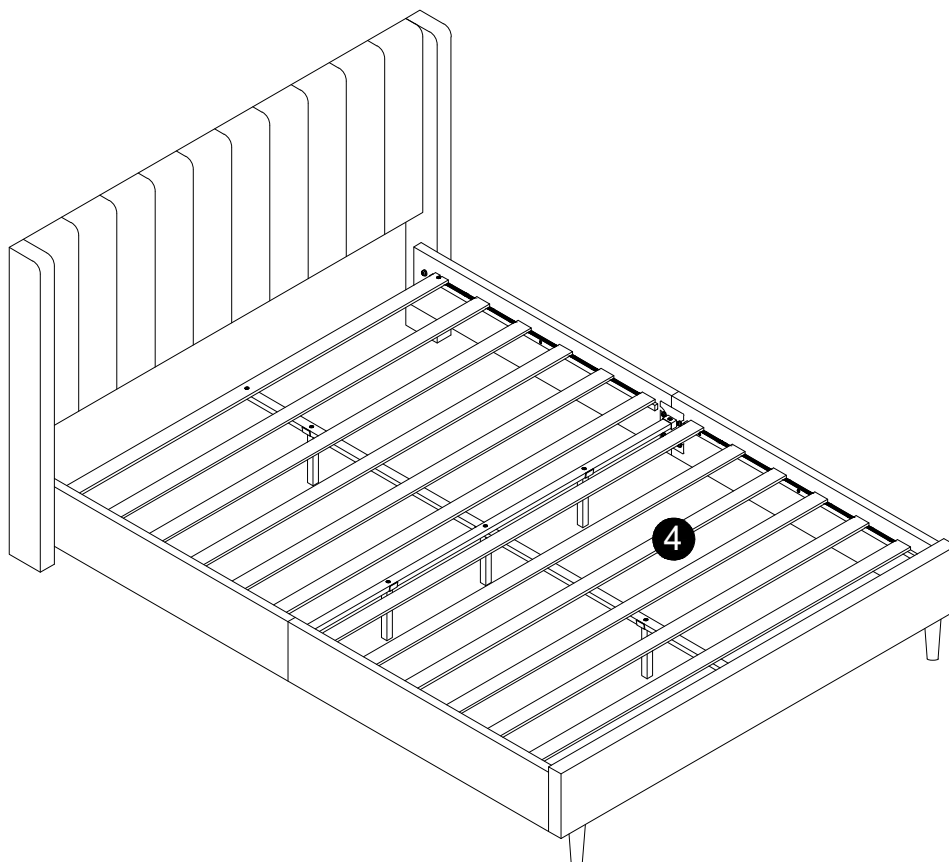


11



Fully tighten all fixings.

12



Job Complete !

In the interest of our environment please dispose of all packaging thoughtfully.