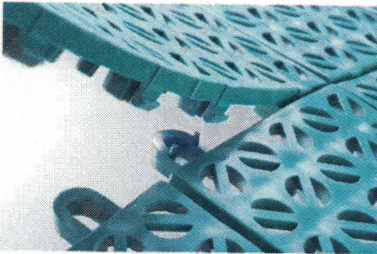


RSI Flooring Tile Assembly

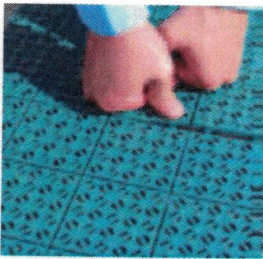


www.RSIWW.com

1. Place Flooring Tile with the attachments on the right side and on the bottom side elements (Male/ Female).



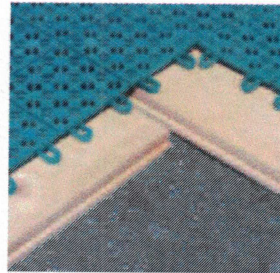
2. Fix the elements (male tabs to the female snap ends) one to another by moderately pressing or using a small plastic hammer.



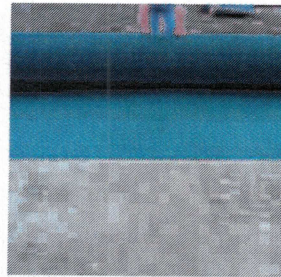
3. Continue the laying alongside the elements in horizontal rows, starting from left to right and from top to bottom.



4. To fix elements on uneven surfaces place under the element a wooden board.



5. Flooring Tile can be easily stored even rolled.

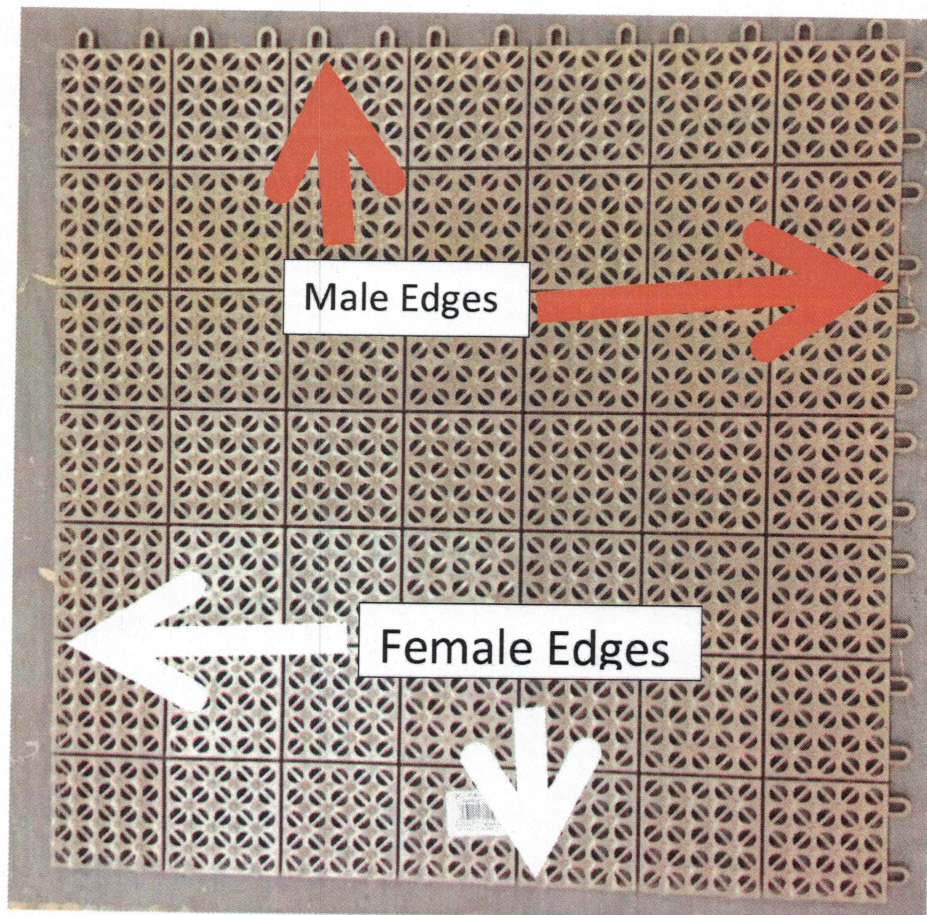


6. Finished product provides years of safe, dry, and clean environments.



ASSEMBLY WHEN TILES NEED TO BE CUT:

Each panel has 4 sides - 2 are "Male" and 2 are "Female" (see below image):



1. Start at top right corner of diagram with full 22"x22" panel. (Attached)
2. Work the first column from top to bottom of the diagram snapping the tiles in place.
3. If diagram calls for a smaller diameter than 22"x22" the existing tile will need to be cut with a razor knife. (Each 22"x22" tile is divided into approx. 49 3"x 3" sections that can easily be cut to size. **MAKE SURE BEFORE CUTTING ANY TILES YOU LINE UP THE EDGES (MALE TO FEMALE) SO YOU KNOW WHICH EDGES YOU NEED TO CUT FROM. IF THE WRONG EDGE IS CUT, THE TILES WILL NOT BE ABLE TO SNAP TOGETHER.**
4. Follow diagram to complete.

Please contact us with any questions you have PRIOR to making any cuts to assure mistakes are NOT made.

www.RSIWW.com

customerservice@rsiww.com

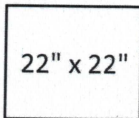
612-787-7863

MONT-12 (97 x 150)

22" x 22"	22" x 9"	22" x 22"	22" x 9"	22" x 22"	22" x 9"	22" x 18"
22" x 22"	22" x 22"	22" x 22"	22" x 22"	22" x 22"	22" x 22"	22" x 18"
22" x 22"	22" x 22"	22" x 22"	22" x 22"	22" x 22"	22" x 22"	22" x 18"
22" x 22"	22" x 22"	22" x 22"	22" x 22"	22" x 22"	22" x 22"	22" x 18"
22" x 22"	22" x 22"	22" x 22"	22" x 22"	22" x 22"	22" x 22"	22" x 18"
22" x 9"		22" x 9"		22" x 9"		

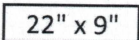
**QTY of
Full
Squares**

24



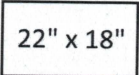
22" x 22" 7 square x 7 square

3



22" x 9" 7 square x 3 square
(NEED TO CUT)

4



22" x 18" 7 square x 6 square
(NEED TO CUT)

Extra space:

8ft side - 1/2in

12ft side 1 & 1/4 in

Total Tiles

31