

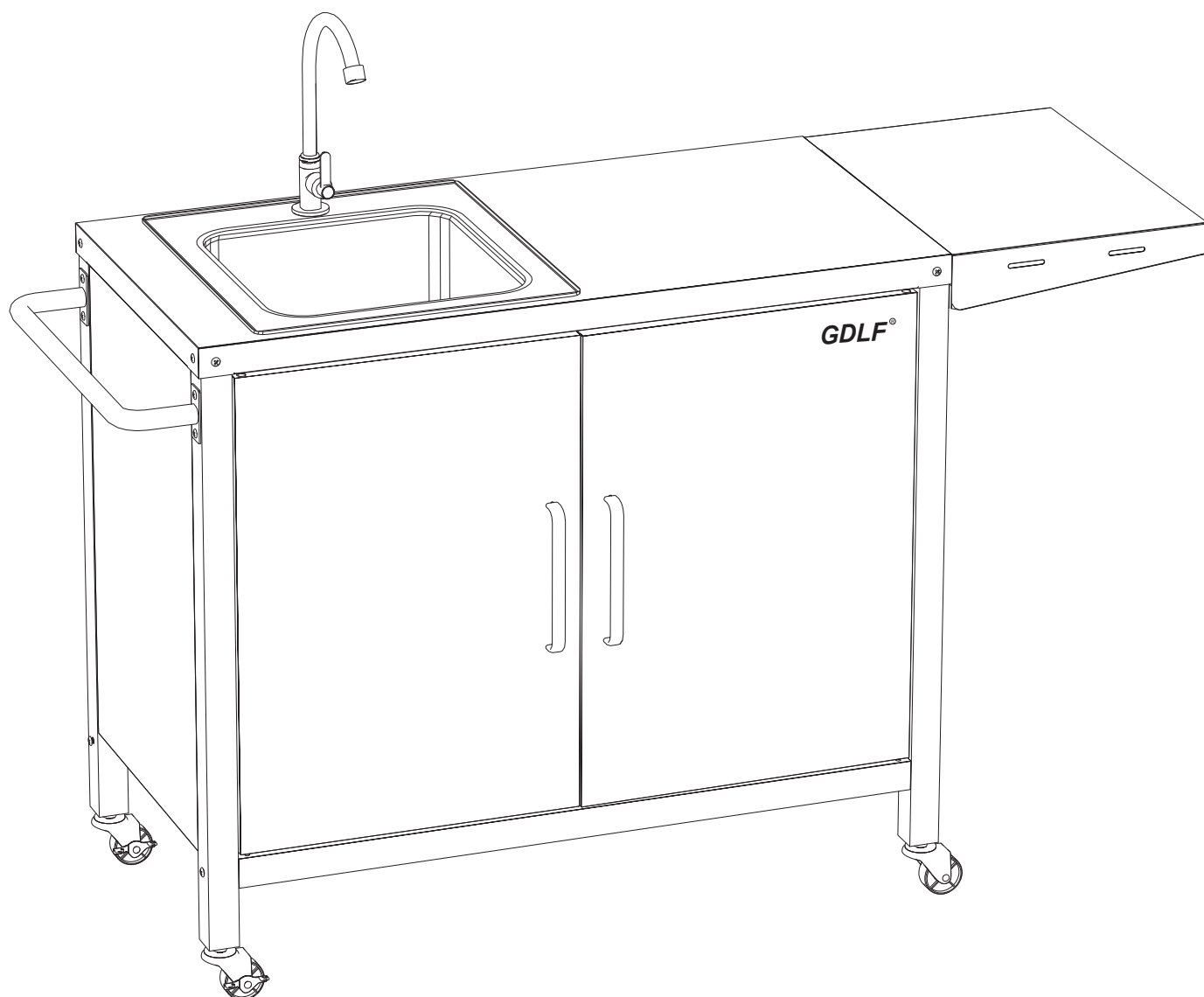


GOOD LIFE

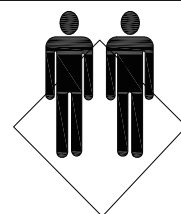
Assembly Instructions



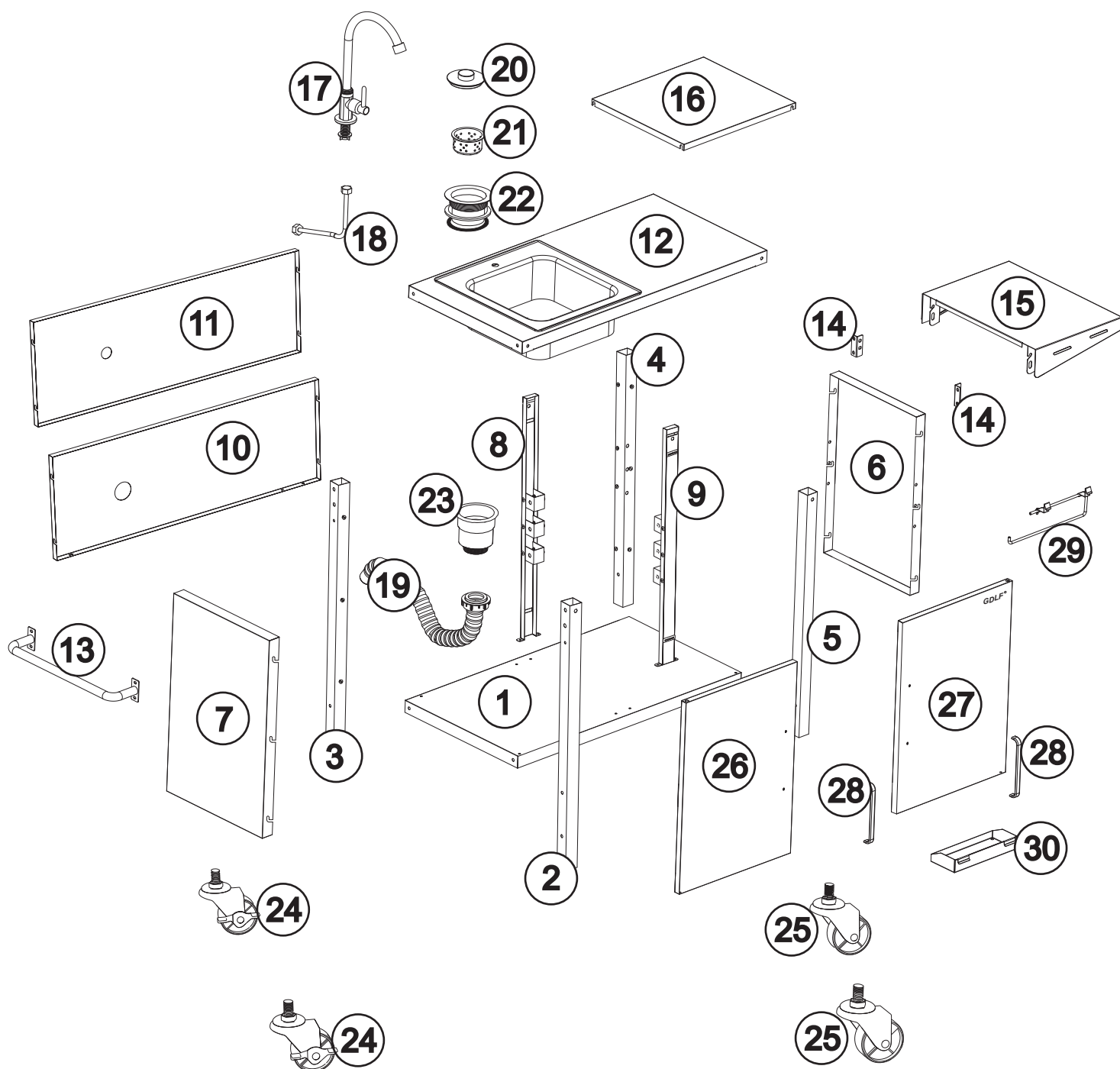
LNG807

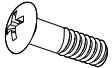


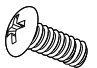
We come with the necessary tools for assembly
but for faster assembly, a power drill is recommended

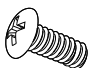



ASSEMBLED BY 2ADULTS

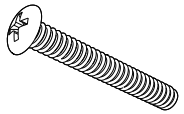



A	×8(+1)
	
Ø 6x20mm	

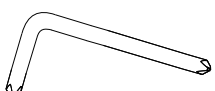
B	×14(+2)
	
Ø 6x16mm	

C	×8(+1)
Stainless Steel Screws	
	
Ø 6x16mm	

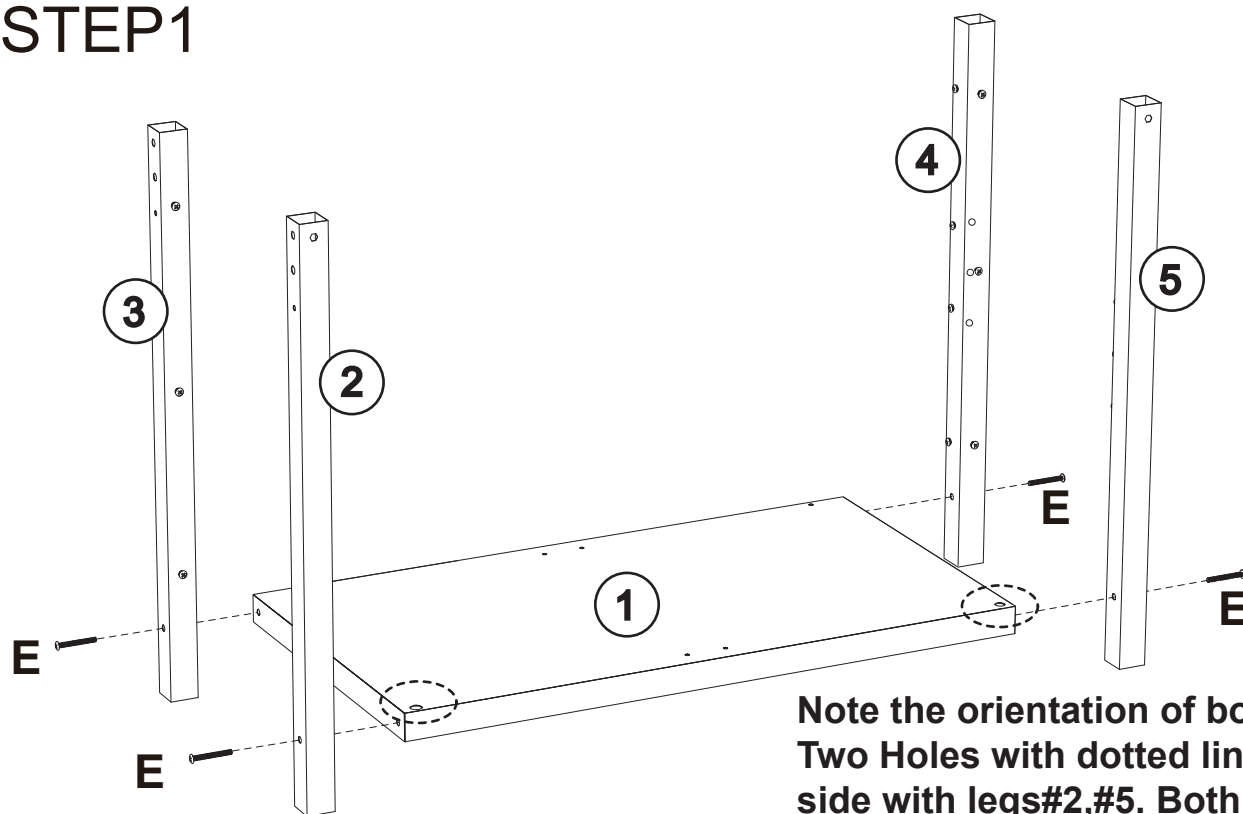
D	×4(+1)
	
Ø 4x6mm	

E	×4(+1)
	
Ø 6x60mm	

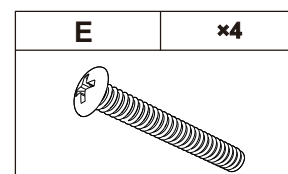
F	×2
	

G	×1
	

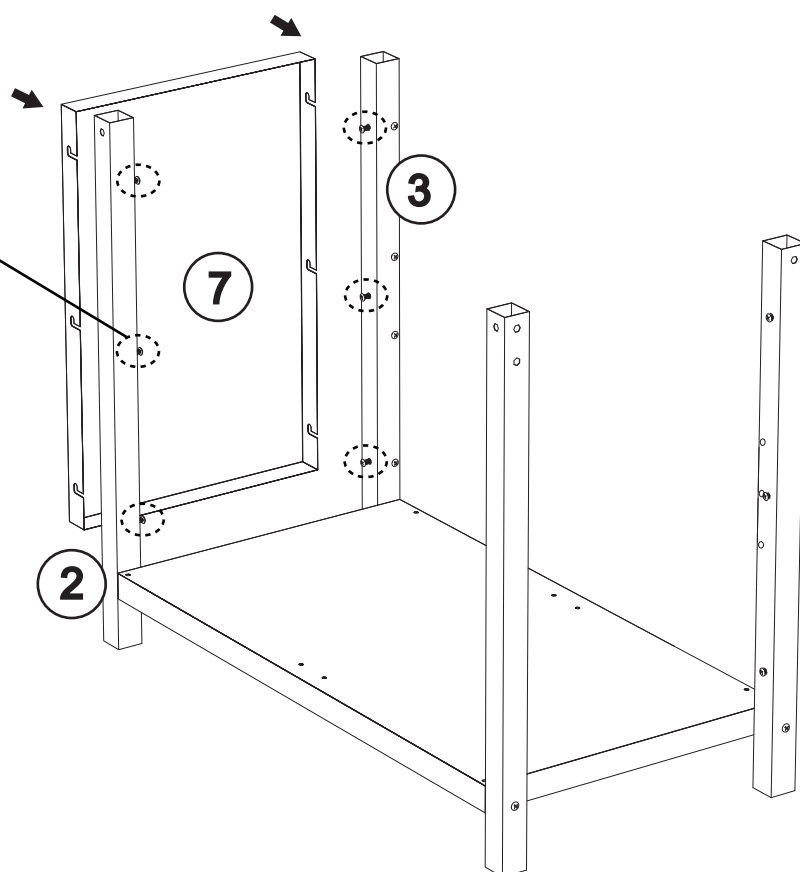
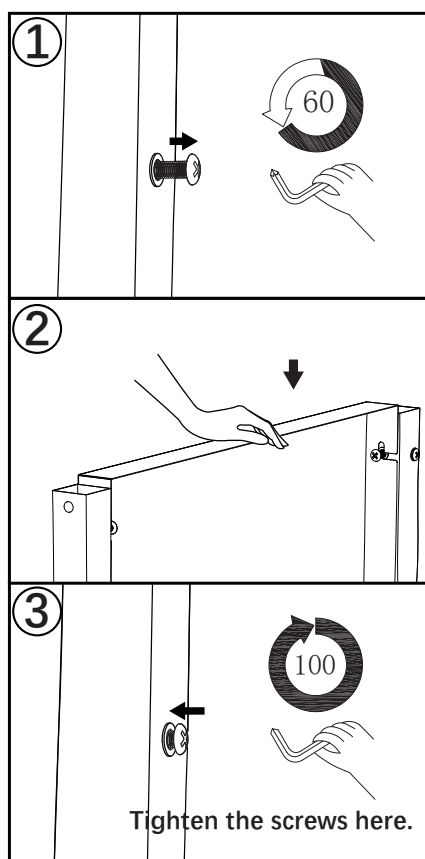
STEP1



Attach Leg Parts#2,#3,#4,#5 to the bottom part#1 with screws E*4 as shown.

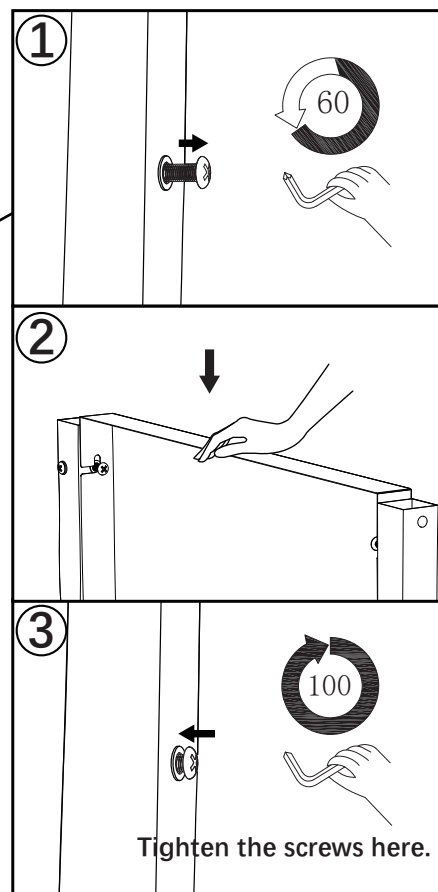
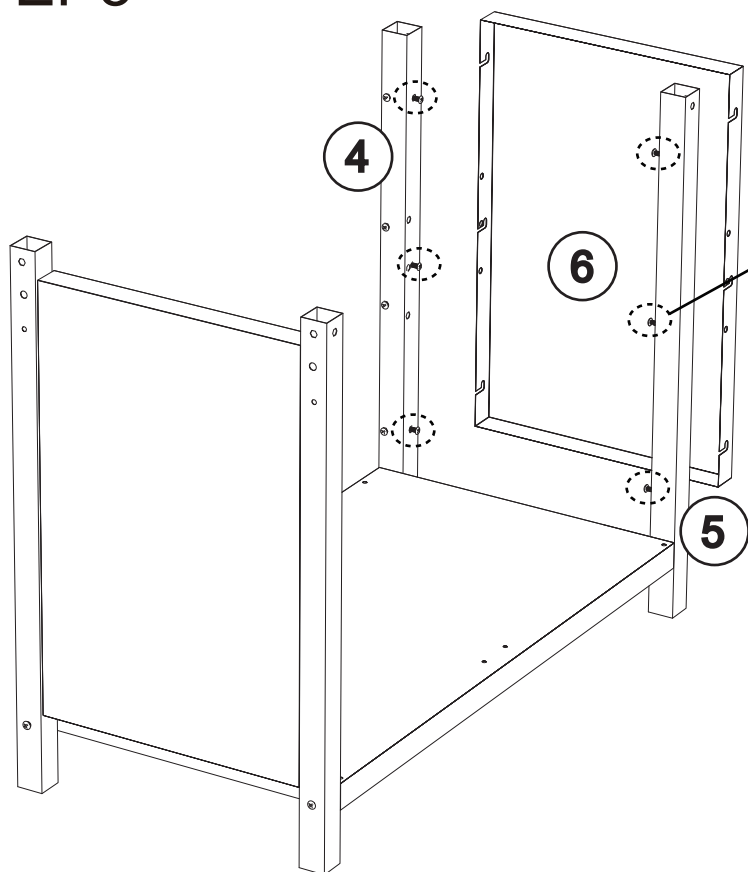


STEP2



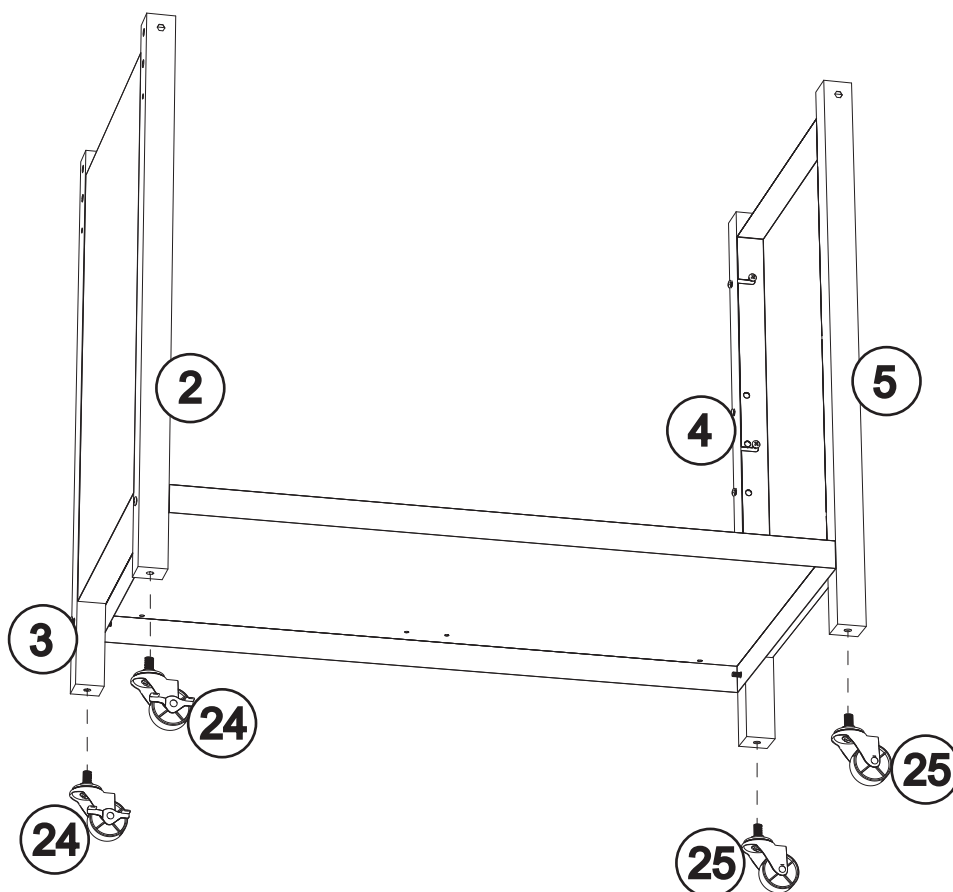
Unscrew the six screws of legs#2,#3 as shown, attach side panel #7, tighten the screws.

STEP3



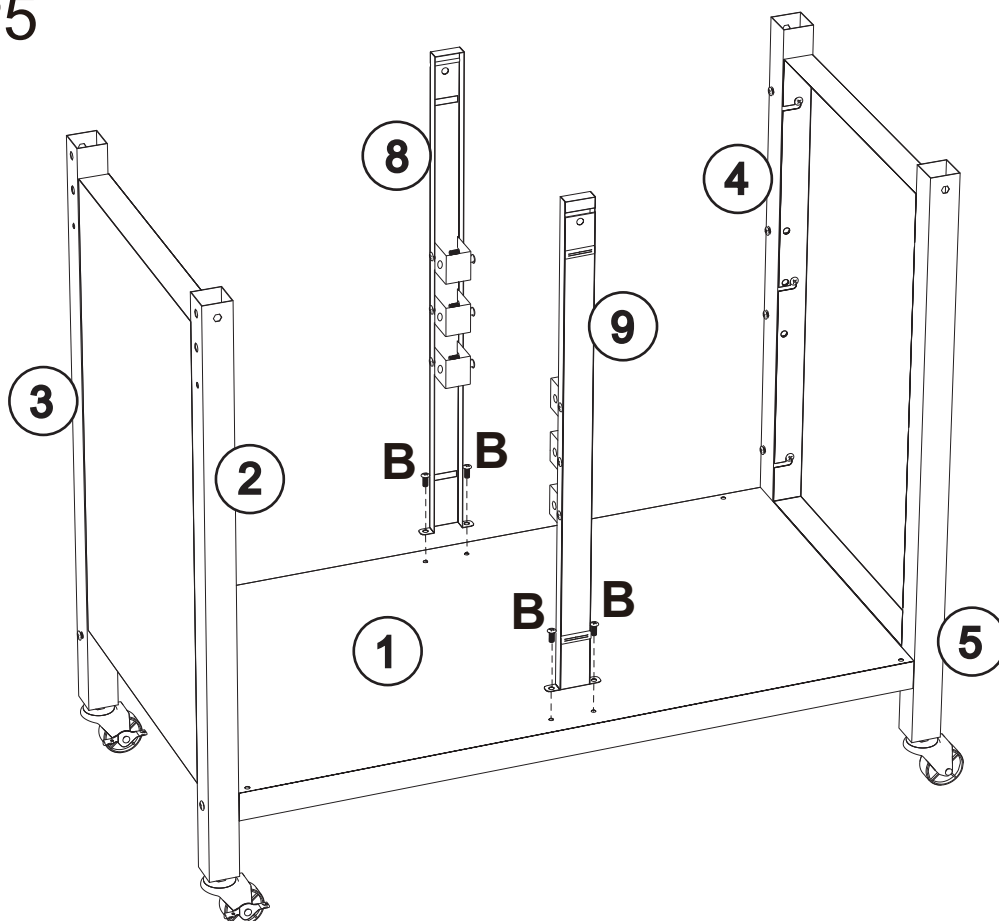
Unscrew the six screws of legs#4,#5 as shown, attach side panel #6, tighten the screws.

STEP4




Attach wheel part#24*2 to legs part#2,part#3.
Attach wheel part#25*2 to legs part#4,part#5 as shown.

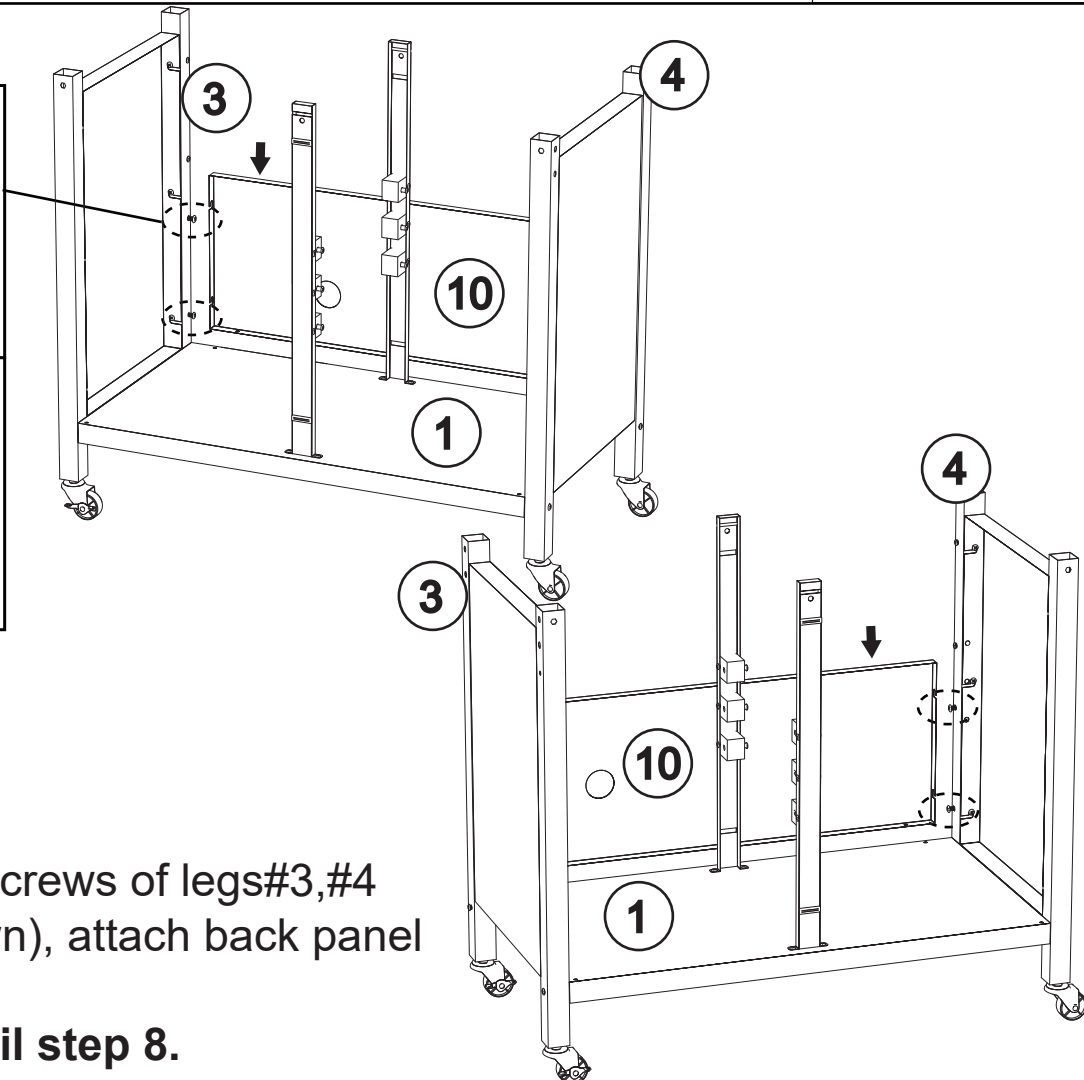
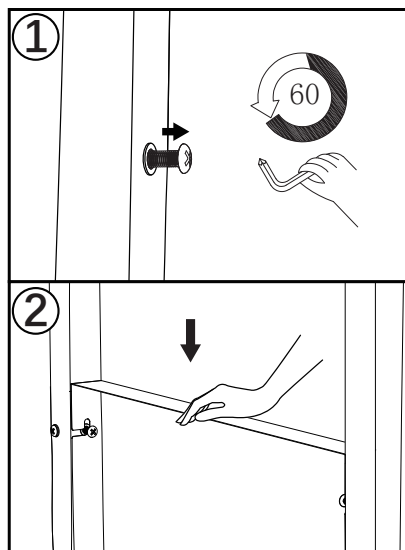
STEP5



Attach middle support part#8,part#9 to the bottom part#1 with screws B*4 as shown.

B	x4
	

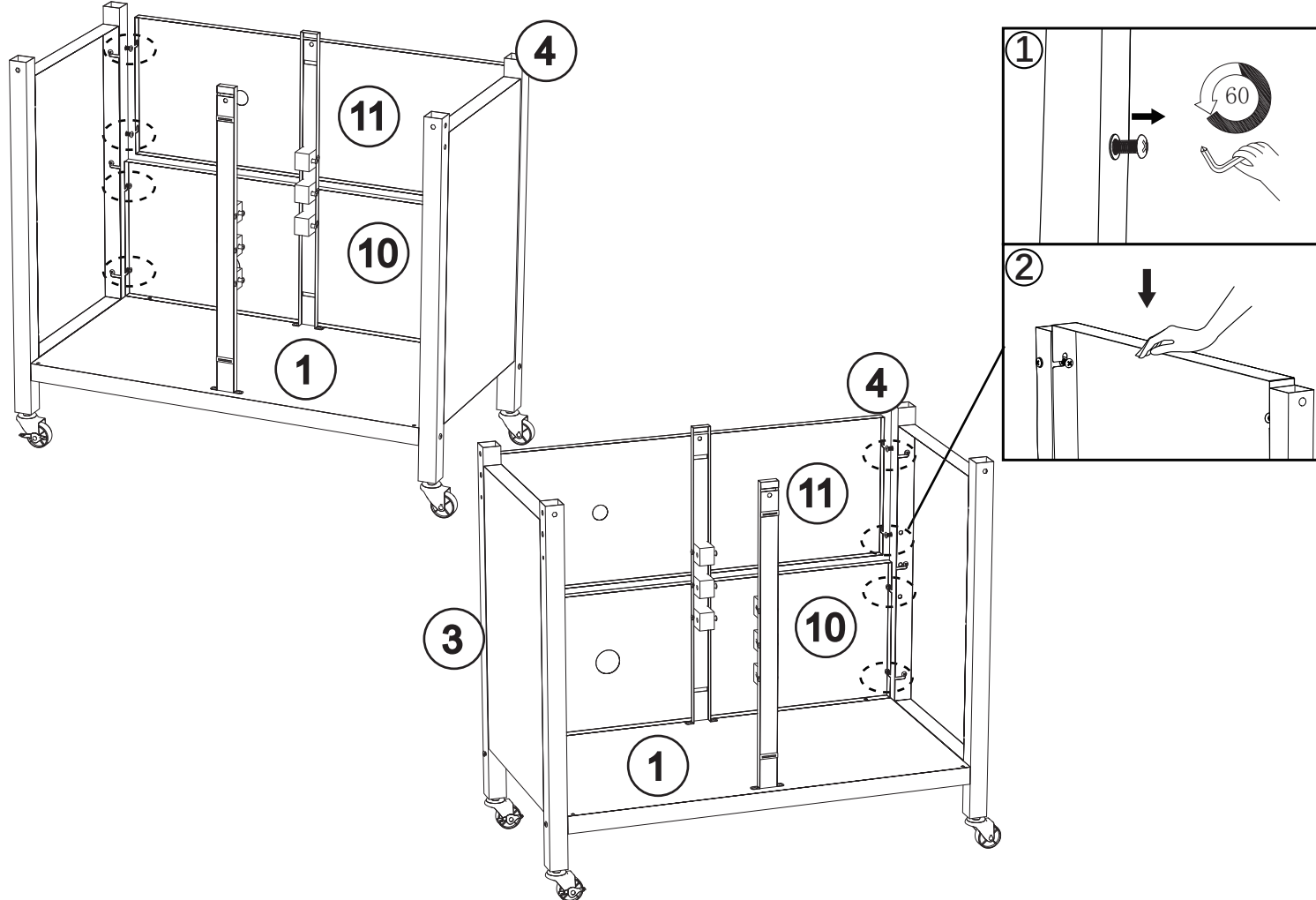
STEP6



Unscrew two side screws of legs#3,#4 (lower part as shown), attach back panel #10 as shown.

Do not tighten until step 8.

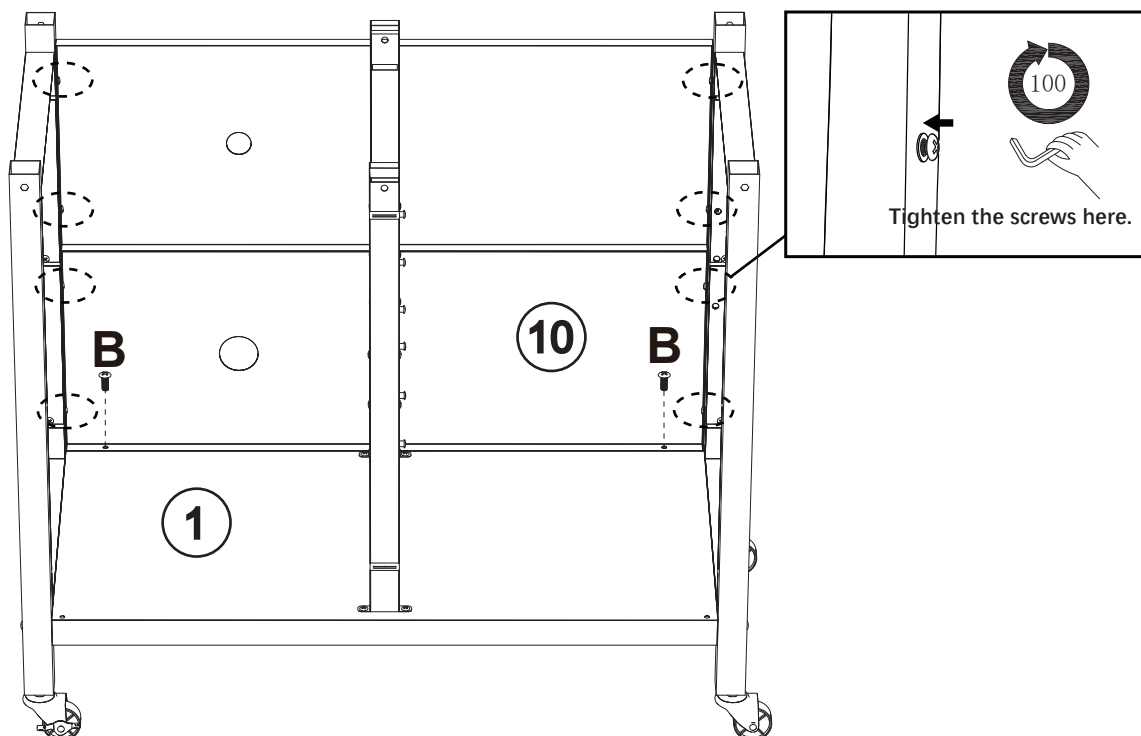
STEP7



Unscrew two side screws of legs #3, #4 (upper part as shown), attach back panel #11 as shown.

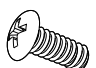
Do not tighten until step 8.

STEP8

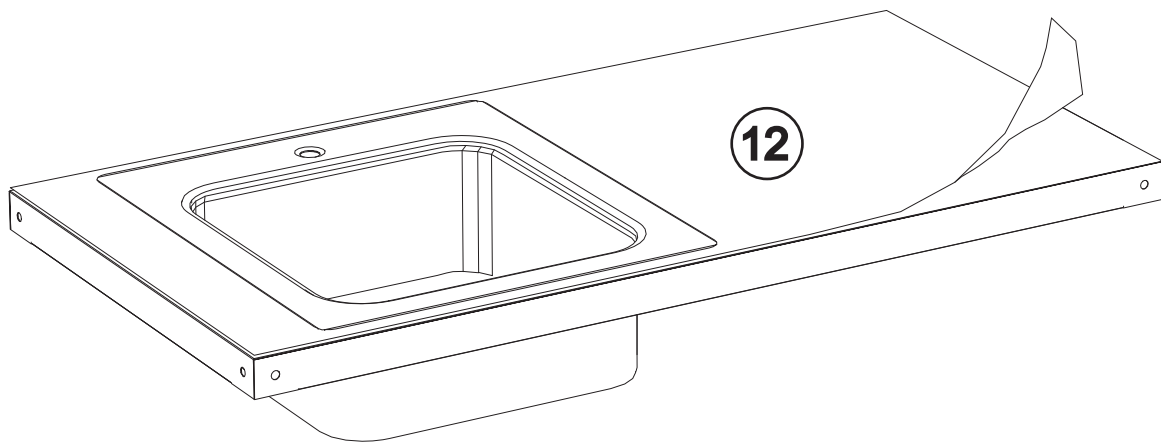


Further attach Part #10 with bottom part #1 with screws B*2 as shown.

Then tighten all 8 screws from step 6 and step 7.

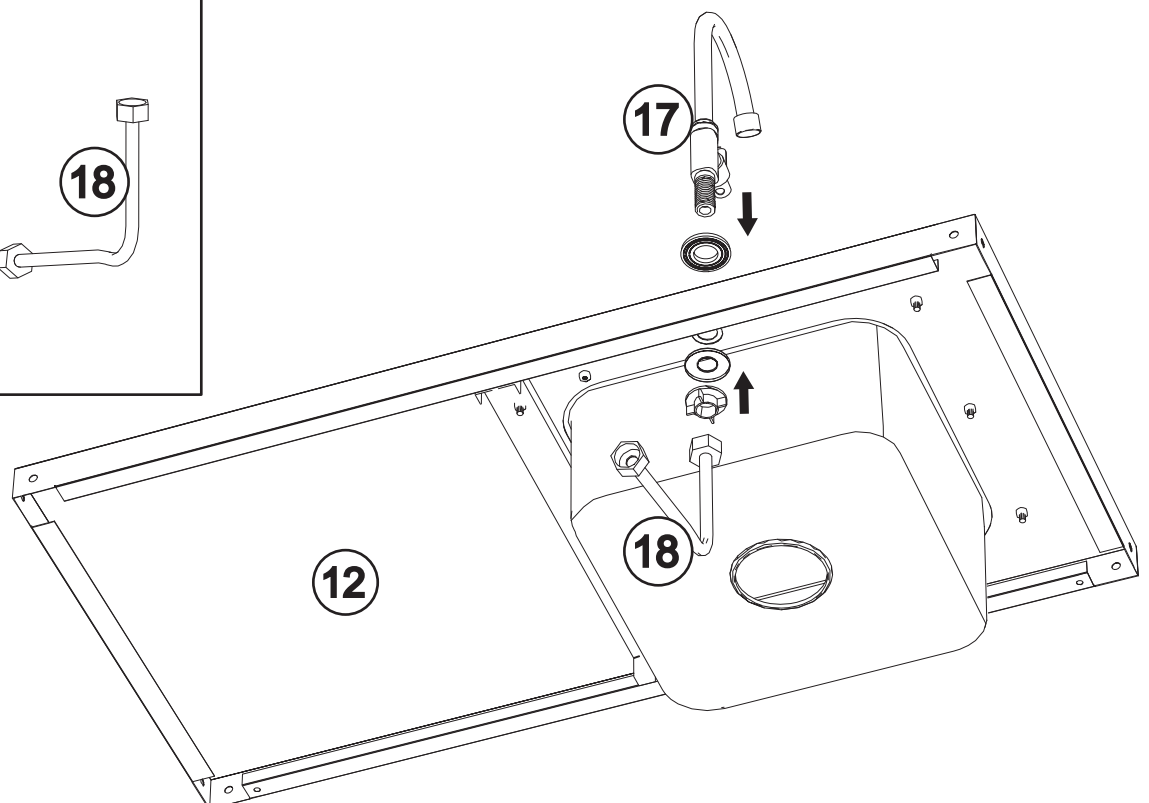
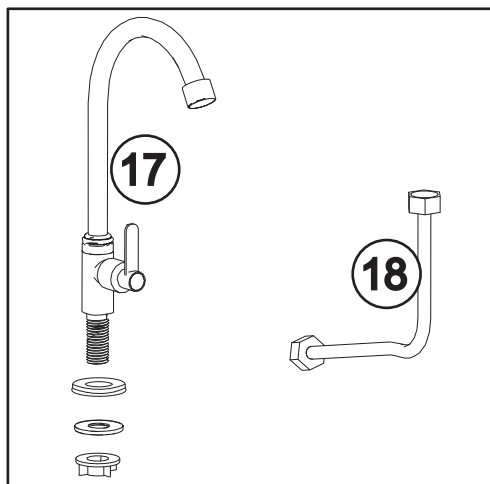
B	×2
	

STEP9



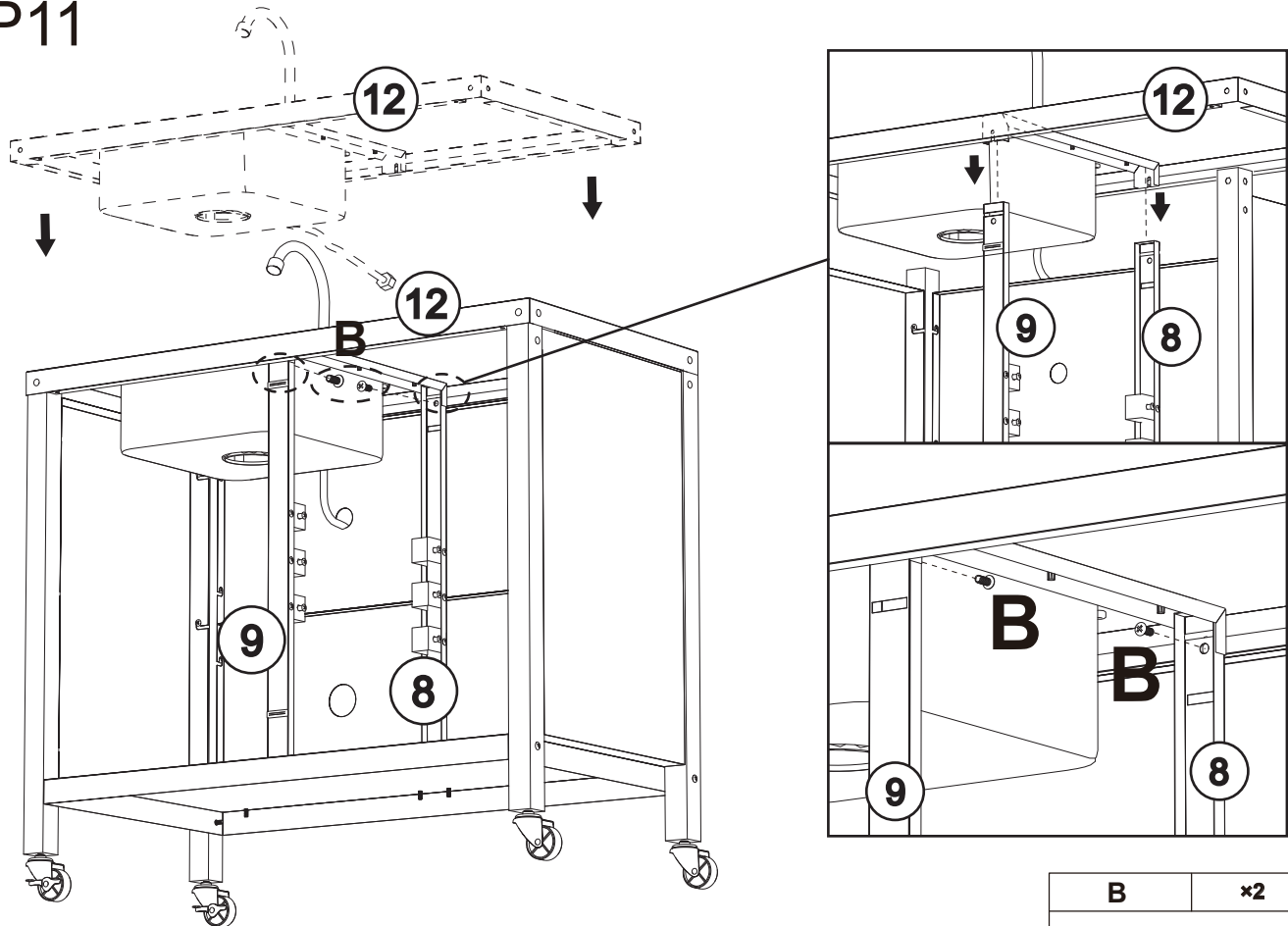
Peel off the stainless steel protective film.

STEP10




Attach Faucet accessories Part#17 with part#18 as shown.

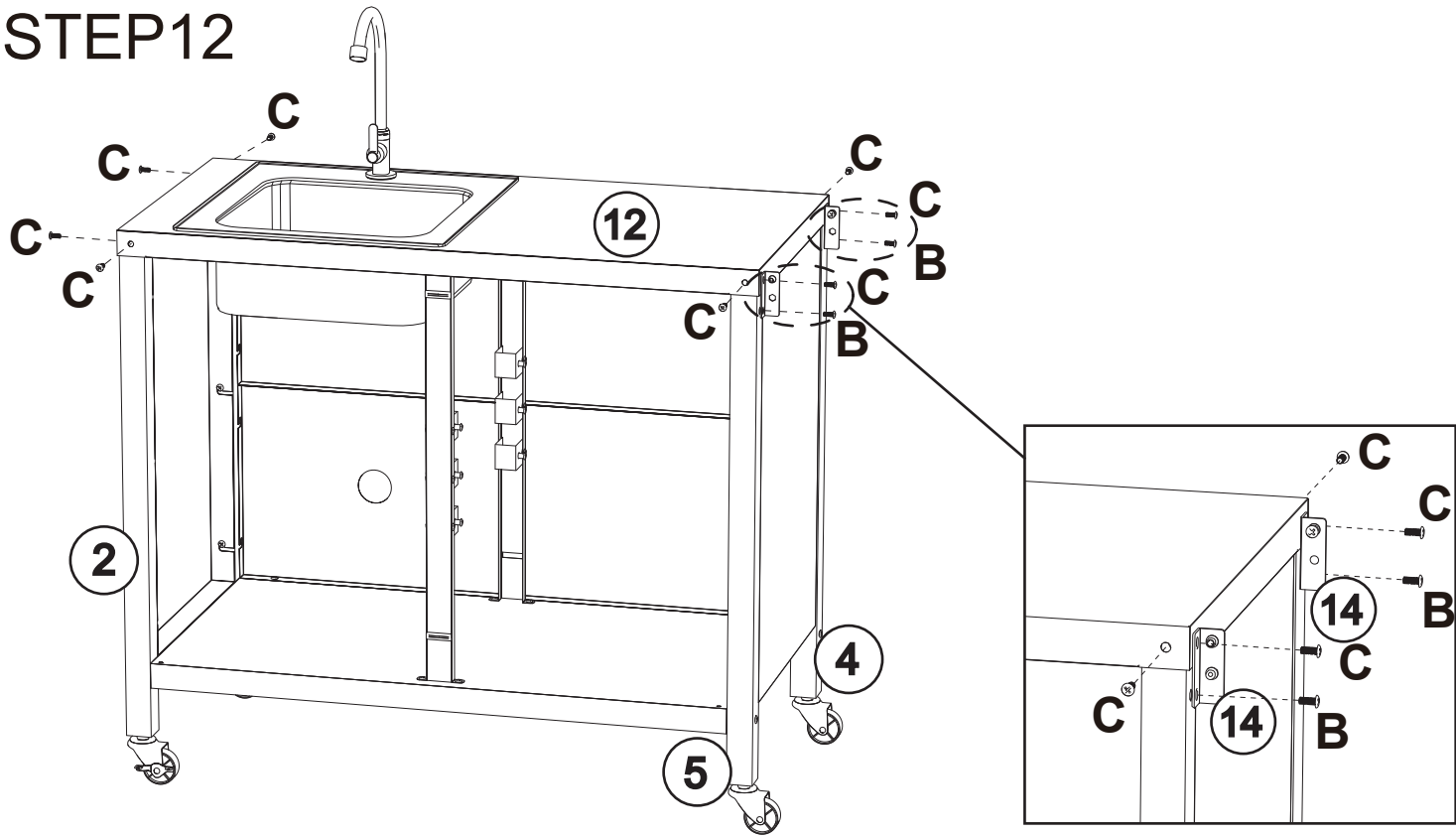
STEP11



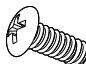

Attach the stainless tabletop with main unit carefully.
Attach part#8,#9 with tabletop with screws B*2 as shown.

B	×2
	

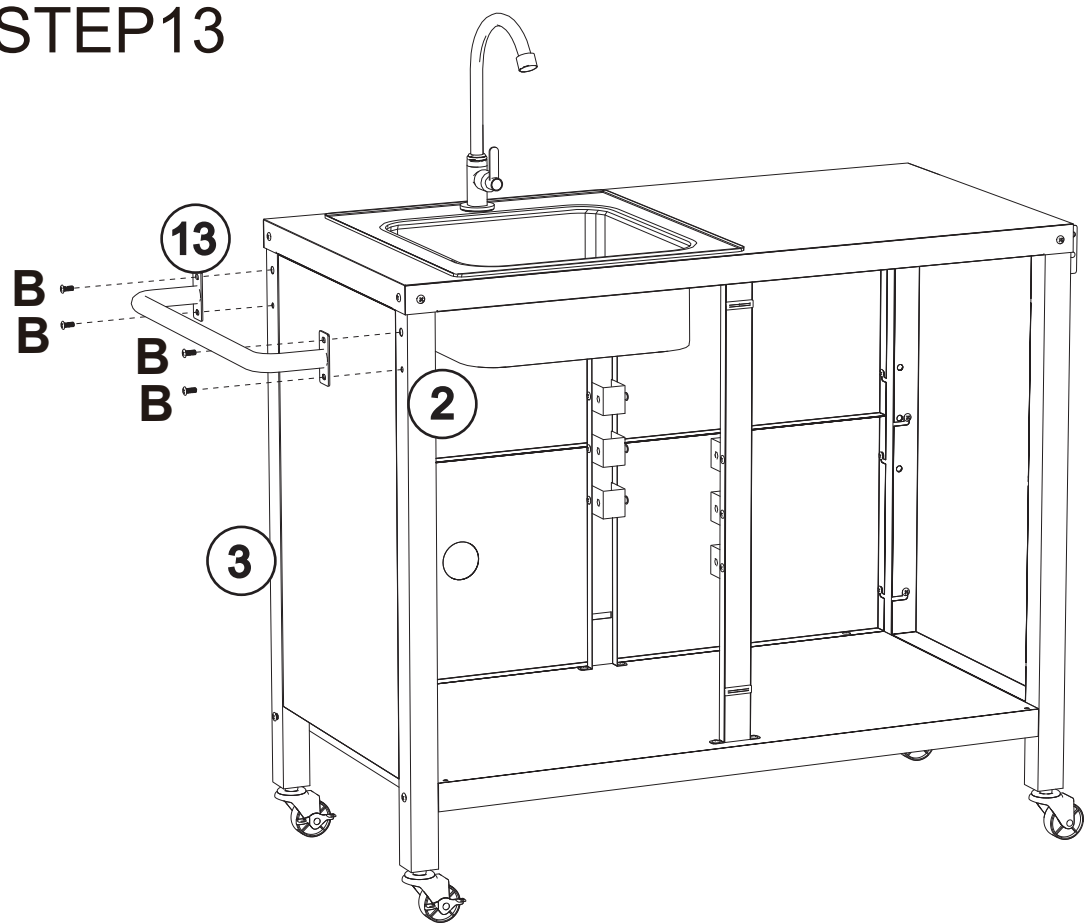
STEP12



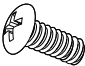
Fix the tabletop with screws C*6 as shown.
Attach Part#14 to the side at the same time
with screws B*2, C*2 as shown.

C	×8	B	×2
Stainless Steel Screws			
			

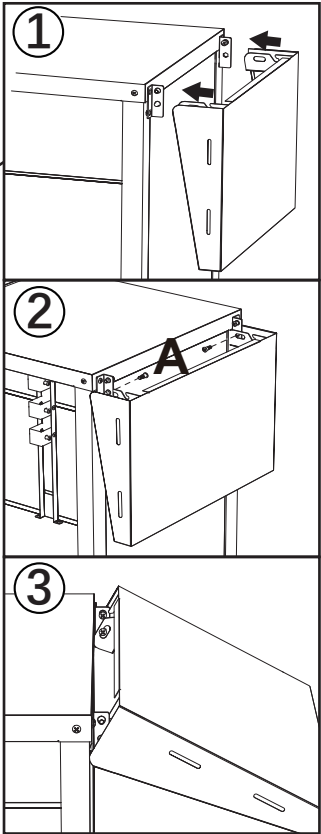
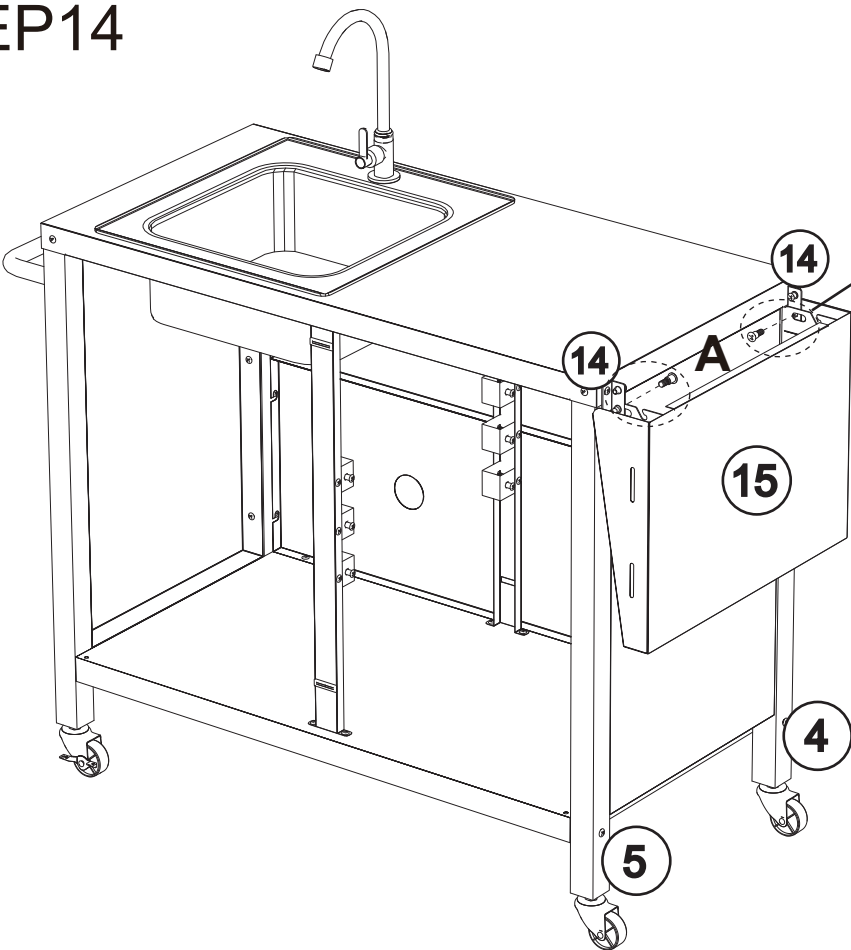
STEP13



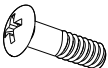
Attach Handle part#13 with screws B*4 as shown.

B	x4
	

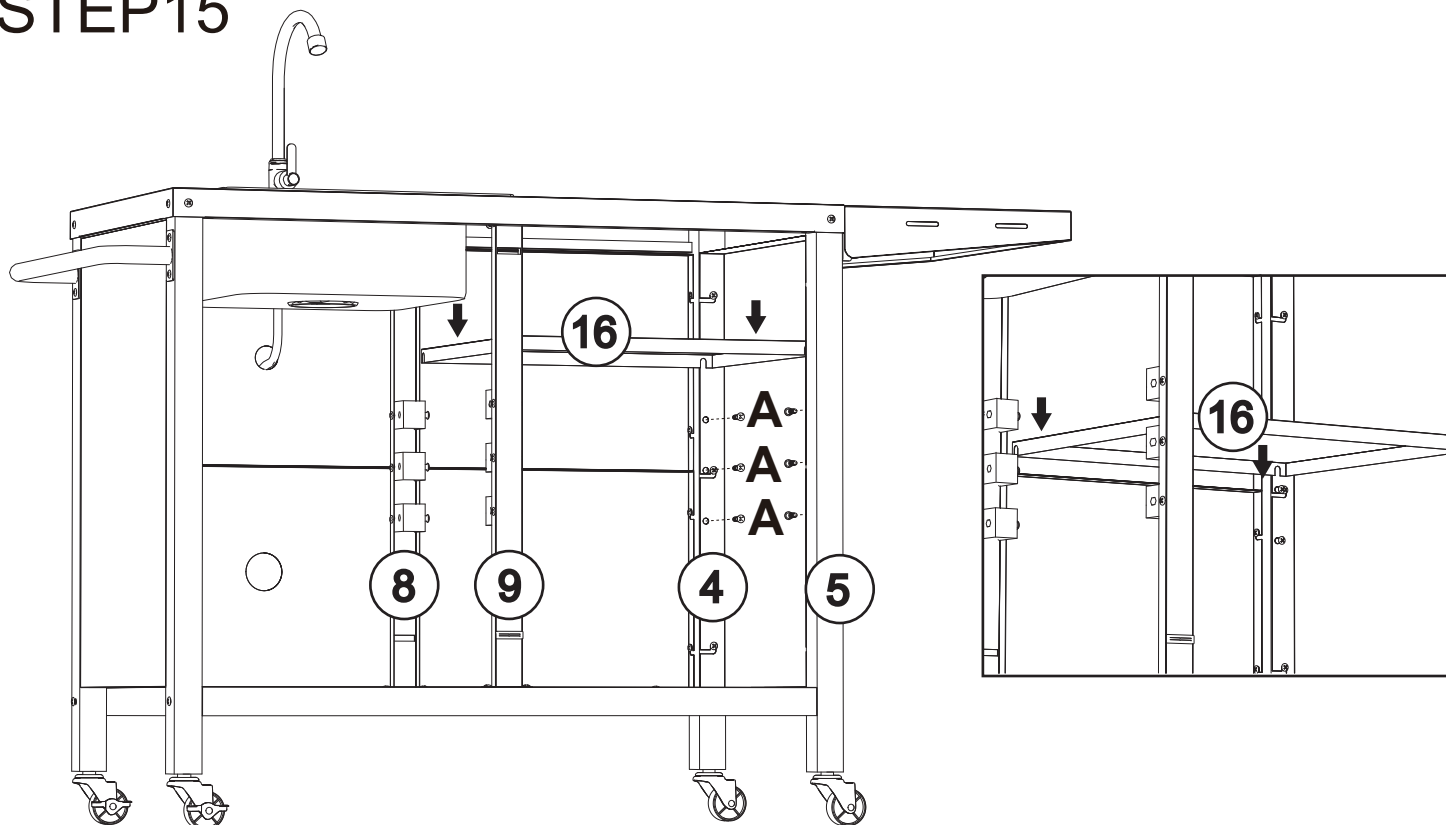
STEP14



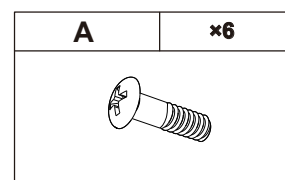
Attach Part#15 to Part#14 with screws A*2 as shown.

A	x2
	

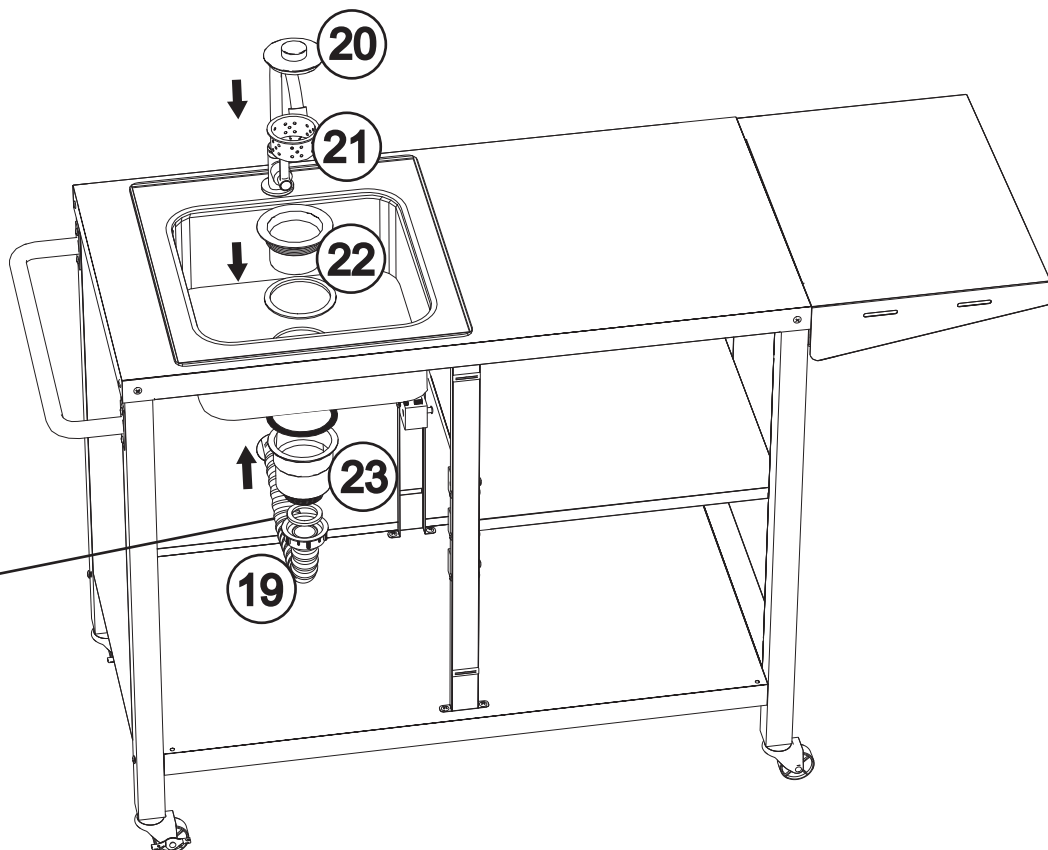
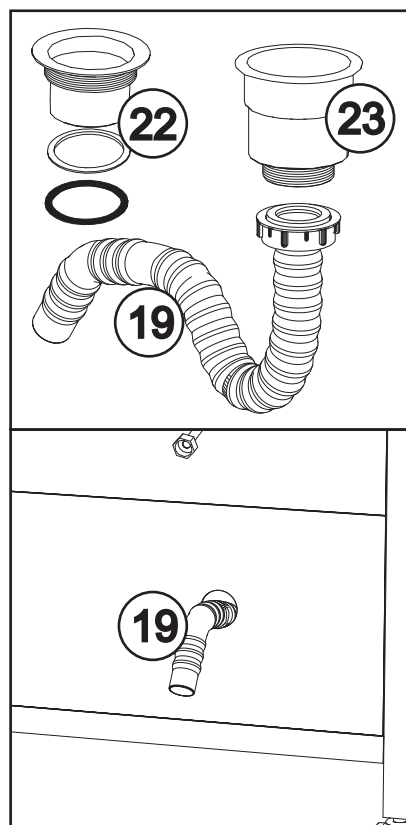
STEP15



Attach screws A*6 to legs #4,#5 as shown.
Put adjustable shelf part#16 as you like.

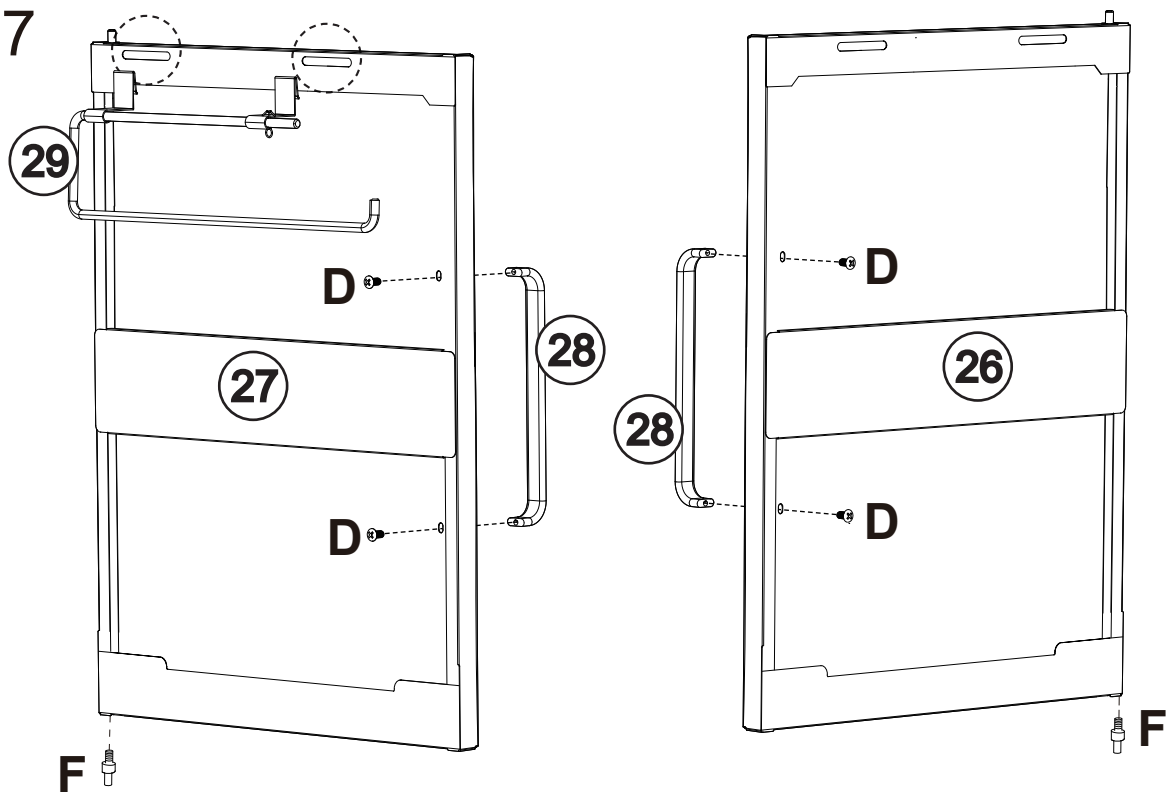


STEP16





Put sink accessories part#20,#21,#22 as shown.
Attach part#23 to part#22 and then attach part #19 to part#23 as shown.

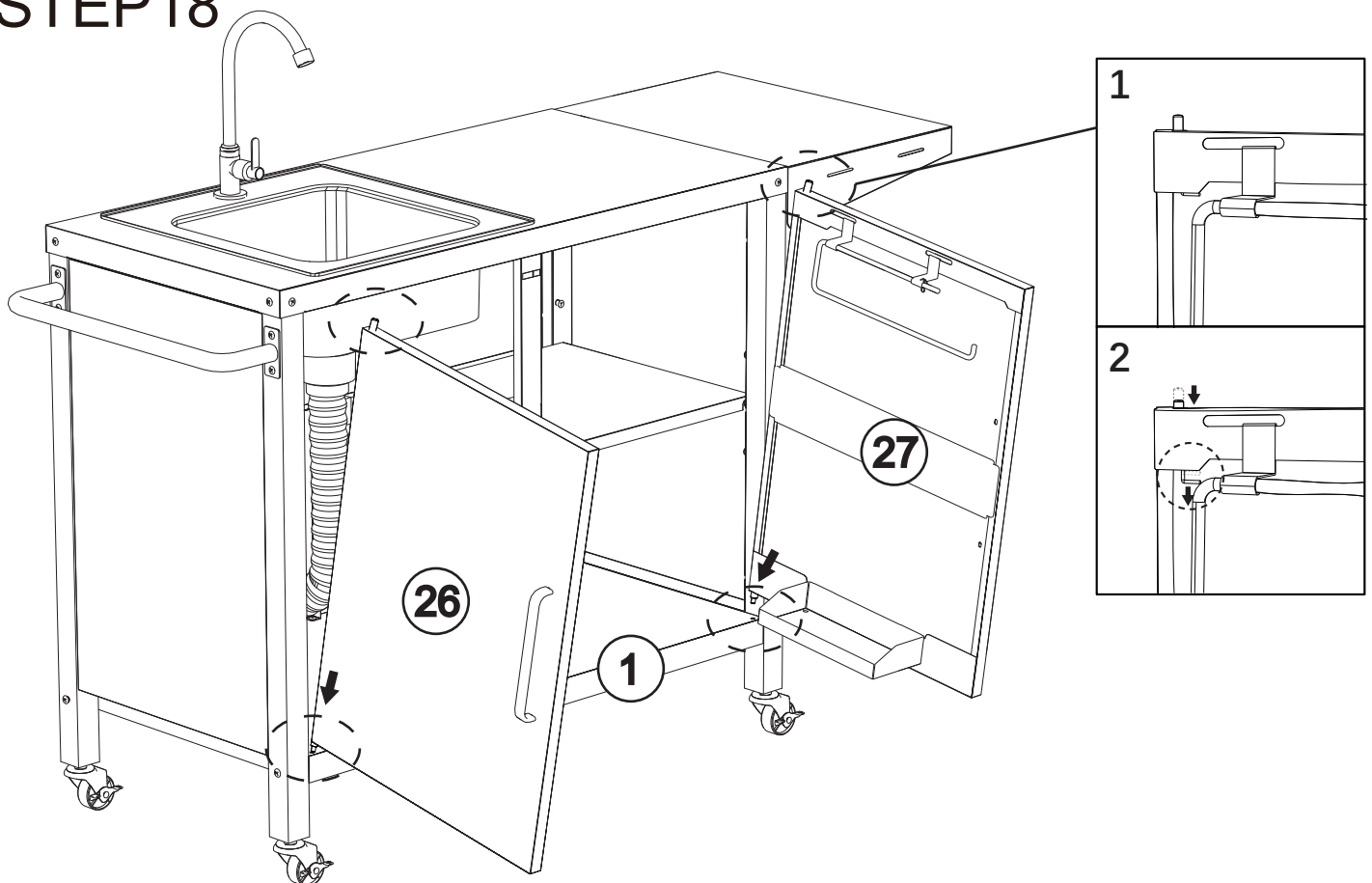
STEP17



Attach door handle #28 to the door with screws D*4 as shown.
 Clip paper towel hook #29 to the top of the door.
 Attach screws F*1 to each of the door bottoms
 as shown for further assembly.

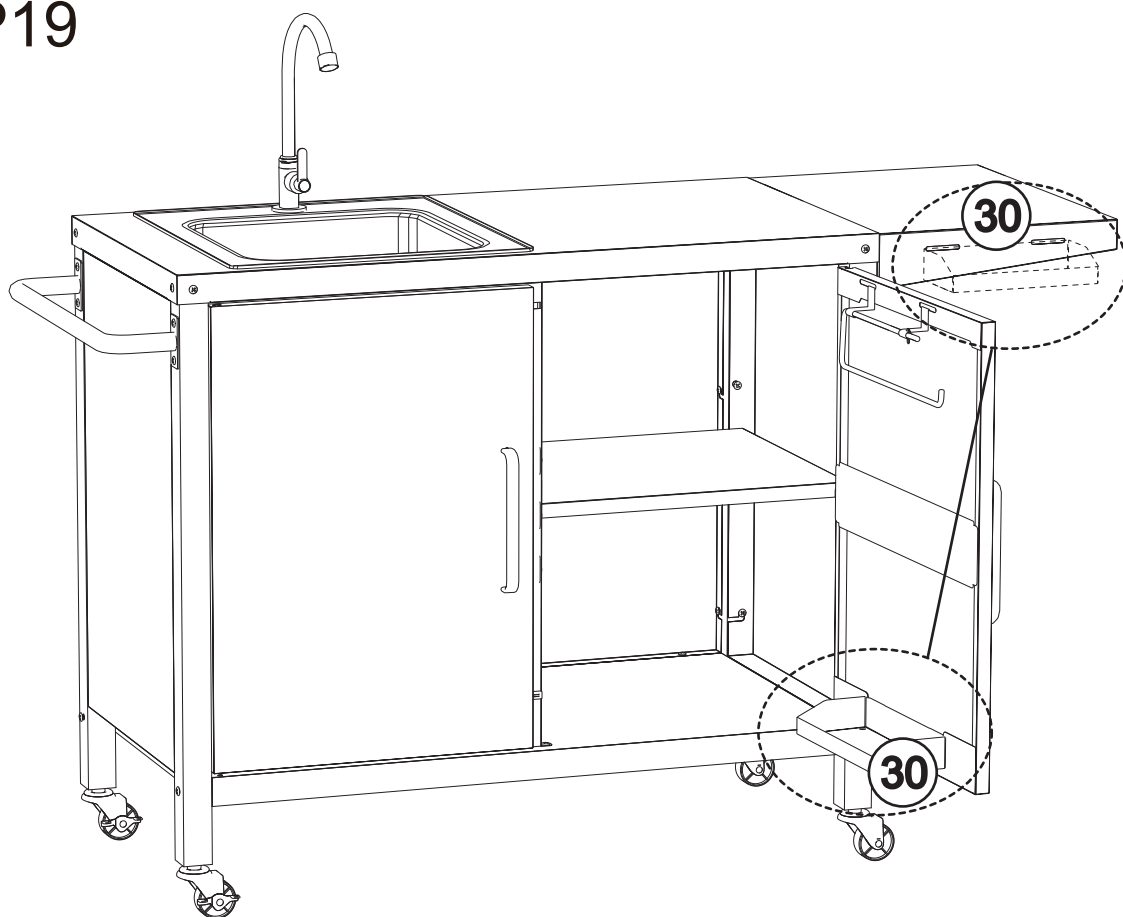
F	x2	D	x4
			

STEP18



Attach the doors to the unit as shown.

STEP19



Spice rack #30 can be put at the bottom of the door, or hang on the removable panel as shown.

Enjoy the unit!

